



# COOLANT REPORT

Sample Rating Trend

**NORMAL**



Area  
**OKLAHOMA/102/EG - SKID STEER**  
 Machine Id  
**53.180L [OKLAHOMA^102^EG - SKID STEER]**  
 Component  
**Radiator Coolant**  
 Fluid  
**EXTENDED LIFE COOLANT (--- GAL)**



## DIAGNOSIS

### Recommendation

The fluid is suitable for further service.

### Wear

All metal levels are normal indicating no corrosion in the cooling system.

### Contamination

There is no indication of any contamination in the coolant.

### Fluid Condition

Glycol and nitrite levels are acceptable. The pH level of this fluid is within the acceptable limits.

## SAMPLE INFORMATION

method	limit/base	current	history1	history2
Sample Number	Client Info	<b>WC0862660</b>	---	---
Sample Date	Client Info	<b>23 Oct 2023</b>	---	---
Machine Age	hrs Client Info	<b>4</b>	---	---
Oil Age	hrs Client Info	<b>4</b>	---	---
Oil Changed	Client Info	<b>Not Chngd</b>	---	---
Sample Status		<b>NORMAL</b>	---	---

## PHYSICAL TEST RESULTS

method	limit/base	current	history1	history2
Specific Gravity	*ASTM D1298	<b>1.068</b>	---	---
pH	Scale 0-14 ASTM D1287	<b>8.51</b>	---	---
Nitrites	ppm AP-053:2009	<b>788</b>	---	---
Reserve Alkalinity	Scale 0-20 *ASTM D1121	<b>---</b>	---	---
Percentage Glycol	% ASTM D3321	<b>50.3</b>	---	---
Freezing Point	°F ASTM D3321	<b>-35</b>	---	---
Total Dissolved Solids		<b>346.0</b>	---	---
Carboxylate		<b>fail</b>	---	---

## CORROSION INHIBITORS

method	limit/base	current	history1	history2
Silicon	ppm ASTM D6130	<b>3</b>	---	---
Phosphorus	ppm ASTM D6130	<b>2</b>	---	---
Boron	ppm ASTM D6130	<b>0</b>	---	---
Molybdenum	ppm ASTM D6130	<b>676</b>	---	---

## CORROSION

method	limit/base	current	history1	history2
Iron	ppm ASTM D6130	<b>0</b>	---	---
Aluminum	ppm ASTM D6130	<b>2</b>	---	---
Copper	ppm ASTM D6130	<b>0</b>	---	---
Lead	ppm ASTM D6130	<b>&lt;1</b>	---	---
Tin	ppm ASTM D6130	<b>&lt;1</b>	---	---
Zinc	ppm ASTM D6130	<b>0</b>	---	---

## CONTAMINANTS

method	limit/base	current	history1	history2
Chlorine	ppm ASTM D6130	<b>10</b>	---	---

## CARRIER SALTS

method	limit/base	current	history1	history2
Sodium	ppm ASTM D6130	<b>3799</b>	---	---
Potassium	ppm ASTM D6130	<b>123</b>	---	---



## SCALE POTENTIAL

method	limit/base	current	history1	history2
Calcium	ppm ASTM D6130	<b>2</b>	---	---
Magnesium	ppm ASTM D6130	<b>1</b>	---	---

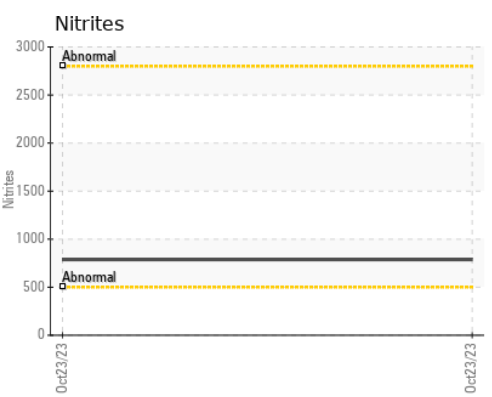
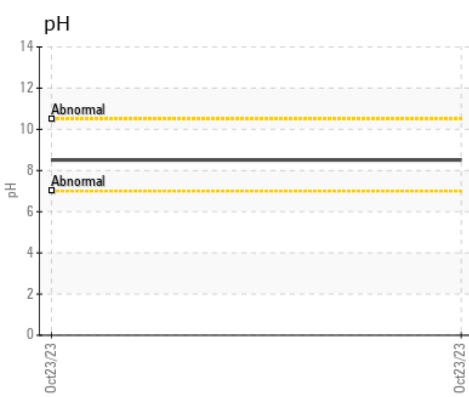
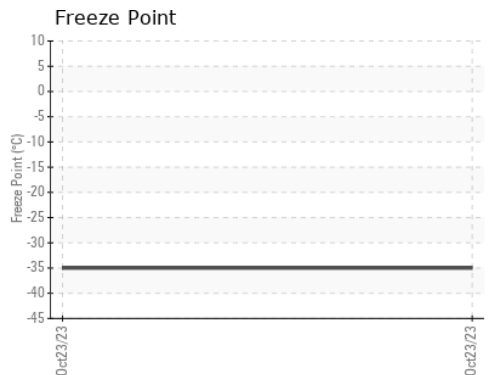
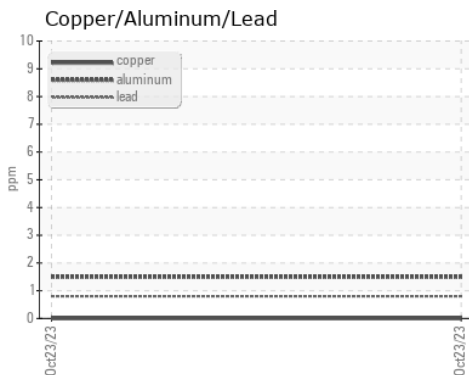
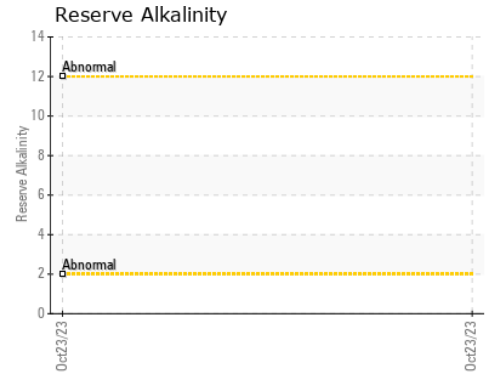
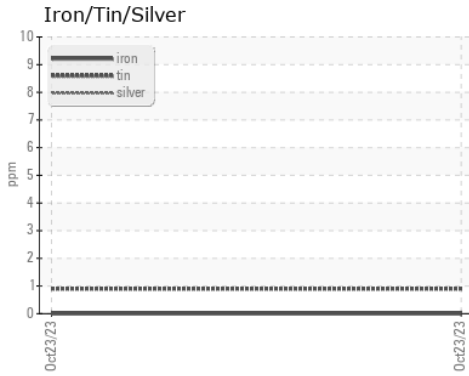


# COOLANT REPORT



VISUAL	method	limit/base	current	history1	history2
Coolant Color	*Visual		<b>Red</b>	---	---
Coolant Appearance	*Visual	Clear	<b>normal</b>	---	---
Color				no image	no image
Bottom				no image	no image

## GRAPHS



Certificate L2367

**Laboratory** : WearCheck USA - 501 Madison Ave., Cary, NC 27513  
**Sample No.** : WC0862660 **Received** : 31 Oct 2023  
**Lab Number** : 05994835 **Diagnosed** : 08 Nov 2023  
**Unique Number** : 10723195 **Diagnostician** : Jonathan Hester  
**Test Package** : COOL- ( Additional Tests: COOL, ICP )

**SHERWOOD CONSTRUCTION CO INC**  
 3219 WEST MAY ST  
 WICHITA, KS  
 US 67213  
 Contact: BILL ORCUTT  
 william.orcutt@wildcat.net  
 T:  
 F:

To discuss this sample report, contact Customer Service at 1-800-237-1369.

\* - Denotes test methods that are outside of the ISO 17025 scope of accreditation.

Statements of conformity to specifications are based on the simple acceptance decision rule (JCGM 106:2012)