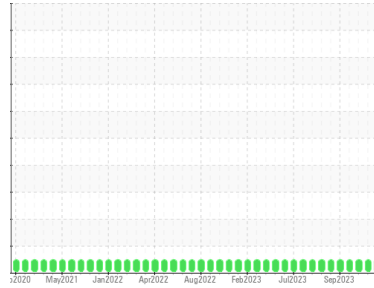




OIL ANALYSIS REPORT

Sample Rating Trend

NORMAL



Machine Id
Byron Center New Oil Byron Center New Oil
 Component
New (Unused) Oil
 Fluid
CHEVRON HDAX 6500 LFG GAS ENGINE OIL (--- GAL)

DIAGNOSIS

Recommendation

This is a baseline read-out on the submitted sample.

SAMPLE INFORMATION		method	limit/base	current	history1	history2
Sample Number	Client Info			WC0640312	WC0640317	WC0614976
Sample Date	Client Info			30 Oct 2023	17 Oct 2023	03 Oct 2023
Machine Age	hrs Client Info			1	1	1
Oil Age	hrs Client Info			1	1	1
Oil Changed	Client Info			N/A	N/A	N/A
Sample Status				NORMAL	NORMAL	NORMAL

WEAR METALS		method	limit/base	current	history1	history2
Iron	ppm	ASTM D5185m	>5	<1	<1	0
Chromium	ppm	ASTM D5185m	>5	<1	<1	0
Nickel	ppm	ASTM D5185m	>5	0	0	0
Titanium	ppm	ASTM D5185m		0	0	0
Silver	ppm	ASTM D5185m	>5	0	0	0
Aluminum	ppm	ASTM D5185m	>5	<1	1	0
Lead	ppm	ASTM D5185m	>5	0	0	0
Copper	ppm	ASTM D5185m	>5	0	0	0
Tin	ppm	ASTM D5185m	>5	0	0	<1
Vanadium	ppm	ASTM D5185m		0	0	0
Cadmium	ppm	ASTM D5185m		<1	0	0

ADDITIVES		method	limit/base	current	history1	history2
Boron	ppm	ASTM D5185m		<1	<1	0
Barium	ppm	ASTM D5185m		0	0	0
Molybdenum	ppm	ASTM D5185m		<1	1	<1
Manganese	ppm	ASTM D5185m		0	0	0
Magnesium	ppm	ASTM D5185m		5	8	6
Calcium	ppm	ASTM D5185m		1653	1690	1526
Phosphorus	ppm	ASTM D5185m		259	231	242
Zinc	ppm	ASTM D5185m		301	307	292
Sulfur	ppm	ASTM D5185m		1698	1749	1769

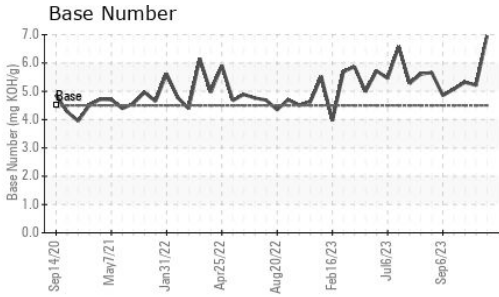
CONTAMINANTS		method	limit/base	current	history1	history2
Silicon	ppm	ASTM D5185m	>15	5	5	4
Sodium	ppm	ASTM D5185m		0	0	0
Potassium	ppm	ASTM D5185m	>20	2	2	<1

FLUID DEGRADATION		method	limit/base	current	history1	history2
Acid Number (AN)	mg KOH/g	ASTM D8045	1.2	0.25	0.32	0.69
Base Number (BN)	mg KOH/g	ASTM D2896	4.5	6.96	5.21	5.32

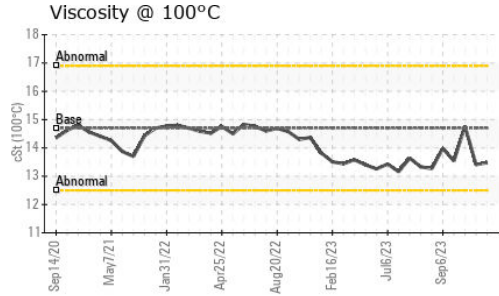
VISUAL		method	limit/base	current	history1	history2
White Metal	scalar	*Visual	NONE	NONE	LIGHT	NONE
Yellow Metal	scalar	*Visual	NONE	NONE	NONE	NONE
Precipitate	scalar	*Visual	NONE	NONE	NONE	NONE
Silt	scalar	*Visual	NONE	NONE	NONE	NONE
Debris	scalar	*Visual	NONE	NONE	NONE	NONE
Sand/Dirt	scalar	*Visual	NONE	NONE	NONE	NONE
Appearance	scalar	*Visual	NORML	NORML	NORML	NORML
Odor	scalar	*Visual	NORML	NORML	NORML	NORML
Emulsified Water	scalar	*Visual		NEG	NEG	NEG
Free Water	scalar	*Visual		NEG	NEG	NEG



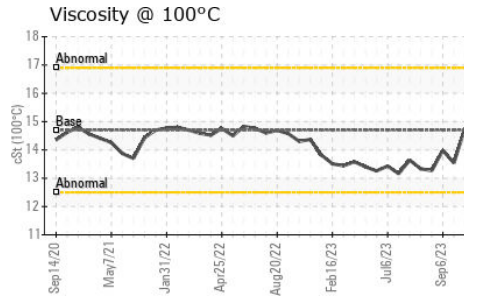
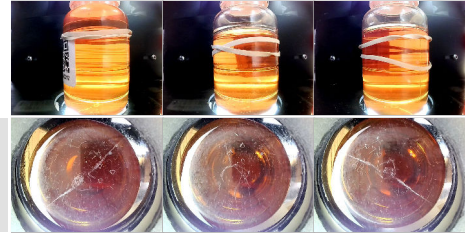
OIL ANALYSIS REPORT



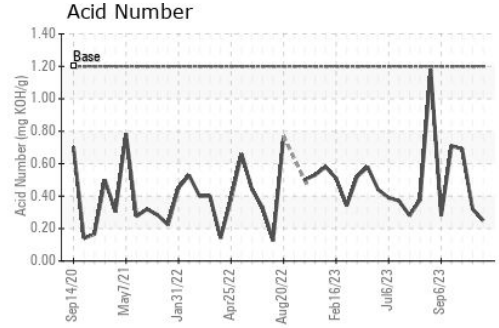
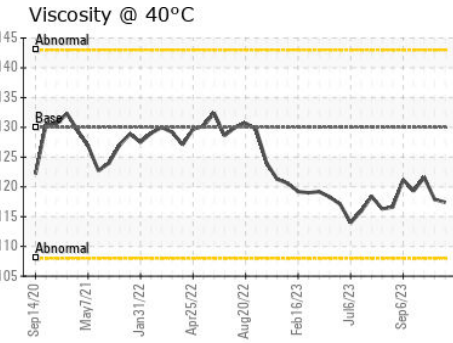
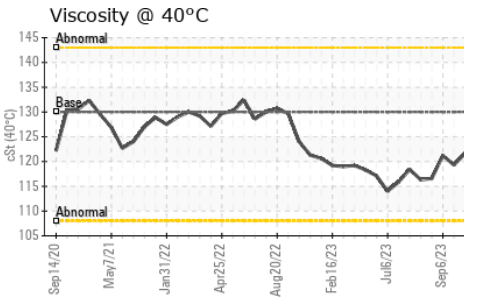
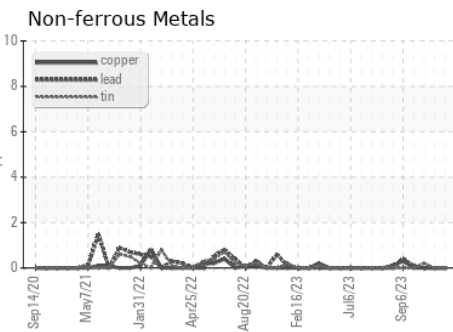
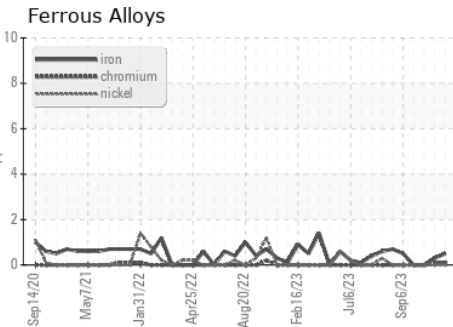
FLUID PROPERTIES	method	limit/base	current	history1	history2	
Visc @ 40°C	cSt	ASTM D445	130	117.4	117.9	121.6
Visc @ 100°C	cSt	ASTM D445	14.7	13.48	13.41	14.77
Viscosity Index (VI)	Scale	ASTM D2270	114	111	109	124



SAMPLE IMAGES	method	limit/base	current	history1	history2
Color					
Bottom					



GRAPHS



Certificate L2367

Laboratory : WearCheck USA - 501 Madison Ave., Cary, NC 27513
Sample No. : WC0640312
Lab Number : 05996131
Unique Number : 10724491
Test Package : MOB 2 (Additional Tests: FT-IR, ICP-NewOil, KF, KV100, PrtCount, TBN, VI)

EDL NA Recips-Byron Center
 Byron Center Powerstation, 10310 South Kent Road
 Byron Center, MI
 US 49315
 Contact: Jake Ripke
 Jake.Ripke@edlenergy.com

To discuss this sample report, contact Customer Service at 1-800-237-1369.

* - Denotes test methods that are outside of the ISO 17025 scope of accreditation.

Statements of conformity to specifications are based on the simple acceptance decision rule (JCGM 106:2012)

T:
F: