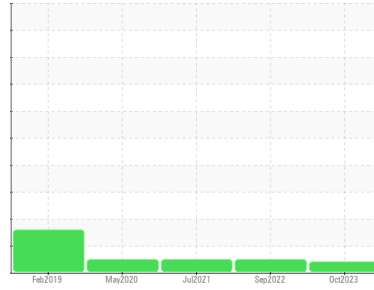




PROBLEM SUMMARY

Sample Rating Trend



VIS DEBRIS



Machine Id
KAESER SM 10 2777236 (S/N 1087)

Component
Compressor

Fluid
KAESER SIGMA (OEM) S-460 (--- GAL)

COMPONENT CONDITION SUMMARY

No relevant graphs to display

RECOMMENDATION

No corrective action is recommended at this time. The filter change at the time of sampling has been noted. Resample at the next service interval to monitor. We were unable to perform a particle count due to a high concentration of particles present in this sample.

PROBLEMATIC TEST RESULTS

Sample Status				ABNORMAL	NORMAL	NORMAL
Debris	scalar	*Visual	NONE	▲ MODER	NONE	LIGHT

Customer Id: LEXLOU
Sample No.: KCPA007721
Lab Number: 05997974
Test Package: IND 2



To manage this report scan the QR code

To discuss the diagnosis or test data:
Don Baldrige +1
don.b505@comcast.net

To change component or sample information:
Customer Service +1 1-800-237-1369
customerservice@wearcheck.com

RECOMMENDED ACTIONS

Action	Status	Date	Done By	Description
Alert	---	---	?	We were unable to perform a particle count due to a high concentration of particles present in this sample.

HISTORICAL DIAGNOSIS

02 Sep 2022 Diag: Angela Borella

NORMAL



Resample at the next service interval to monitor. All component wear rates are normal. The amount and size of particulates present in the system are acceptable. There is no indication of any contamination in the oil. The AN level is acceptable for this fluid. The condition of the oil is suitable for further service.

view report



16 Jul 2021 Diag: Angela Borella

NORMAL



Resample at the next service interval to monitor. All component wear rates are normal. The amount and size of particulates present in the system are acceptable. There is no indication of any contamination in the oil. The AN level is acceptable for this fluid. The condition of the oil is suitable for further service.

view report



19 May 2020 Diag: Don Baldrige

NORMAL



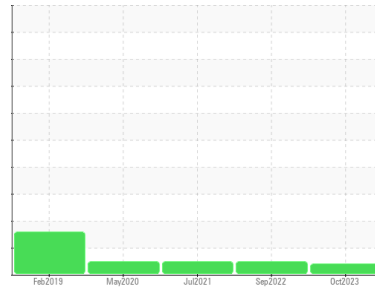
Resample at the next service interval to monitor. All component wear rates are normal. The amount and size of particulates present in the system are acceptable. There is no indication of any contamination in the oil. The AN level is acceptable for this fluid. The condition of the oil is suitable for further service.

view report



Machine Id
KAESER SM 10 2777236 (S/N 1087)

Component
Compressor
Fluid
KAESER SIGMA (OEM) S-460 (--- GAL)



DIAGNOSIS

▲ Recommendation

No corrective action is recommended at this time. The filter change at the time of sampling has been noted. Resample at the next service interval to monitor. We were unable to perform a particle count due to a high concentration of particles present in this sample.

Wear

All component wear rates are normal.

▲ Contamination

Moderate concentration of visible dirt/debris present in the oil.

Fluid Condition

The AN level is acceptable for this fluid. The condition of the oil is suitable for further service.

SAMPLE INFORMATION

	method	limit/base	current	history1	history2
Sample Number	Client Info		KCPA007721	KCP49288	KCP41934
Sample Date	Client Info		09 Oct 2023	02 Sep 2022	16 Jul 2021
Machine Age	hrs	Client Info	59144	51528	50278
Oil Age	hrs	Client Info	0	1250	4000
Oil Changed	Client Info		N/A	Changed	Changed
Sample Status			ABNORMAL	NORMAL	NORMAL

WEAR METALS

	method	limit/base	current	history1	history2
Iron	ppm	ASTM D5185m >50	0	<1	1
Chromium	ppm	ASTM D5185m >10	0	0	0
Nickel	ppm	ASTM D5185m >3	0	0	0
Titanium	ppm	ASTM D5185m >3	0	0	0
Silver	ppm	ASTM D5185m >2	0	0	0
Aluminum	ppm	ASTM D5185m >10	0	<1	<1
Lead	ppm	ASTM D5185m >10	0	0	0
Copper	ppm	ASTM D5185m >50	2	<1	4
Tin	ppm	ASTM D5185m >10	<1	<1	<1
Antimony	ppm	ASTM D5185m	---	---	0
Vanadium	ppm	ASTM D5185m	0	0	0
Cadmium	ppm	ASTM D5185m	0	0	0

ADDITIVES

	method	limit/base	current	history1	history2
Boron	ppm	ASTM D5185m	0	0	13
Barium	ppm	ASTM D5185m 90	38	5	0
Molybdenum	ppm	ASTM D5185m	0	0	0
Manganese	ppm	ASTM D5185m	<1	<1	0
Magnesium	ppm	ASTM D5185m 90	74	71	45
Calcium	ppm	ASTM D5185m 2	3	0	0
Phosphorus	ppm	ASTM D5185m	1	0	7
Zinc	ppm	ASTM D5185m	4	6	4
Sulfur	ppm	ASTM D5185m	17306	21195	17519

CONTAMINANTS

	method	limit/base	current	history1	history2
Silicon	ppm	ASTM D5185m >25	<1	<1	<1
Sodium	ppm	ASTM D5185m	20	15	14
Potassium	ppm	ASTM D5185m >20	2	<1	1
Water	%	ASTM D6304 >0.05	0.027	0.014	0.022
ppm Water	ppm	ASTM D6304 >500	270.4	142.2	222.3

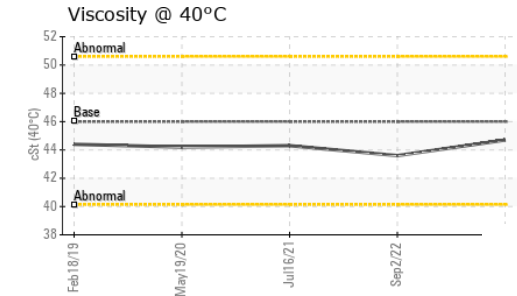
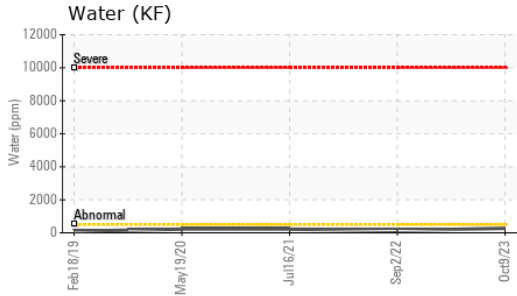
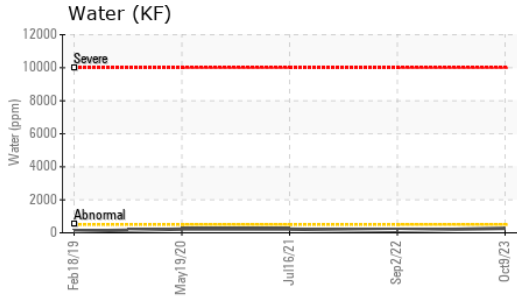
FLUID CLEANLINESS

	method	limit/base	current	history1	history2
Particles >4µm	ASTM D7647		---	1364	3180
Particles >6µm	ASTM D7647 >1300		---	277	840
Particles >14µm	ASTM D7647 >80		---	12	63
Particles >21µm	ASTM D7647 >20		---	2	17
Particles >38µm	ASTM D7647 >4		---	0	0
Particles >71µm	ASTM D7647 >3		---	0	0
Oil Cleanliness	ISO 4406 (c) >--/17/13		---	18/15/11	17/13

FLUID DEGRADATION

	method	limit/base	current	history1	history2
Acid Number (AN)	mg KOH/g	ASTM D8045 0.4	0.32	0.34	0.316

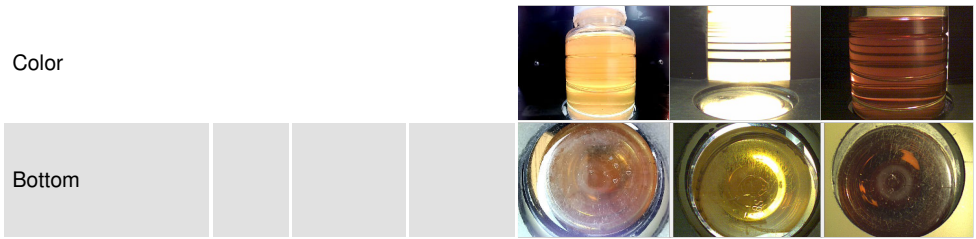
OIL ANALYSIS REPORT



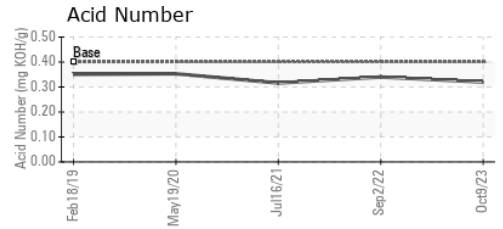
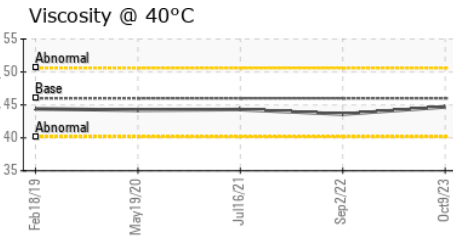
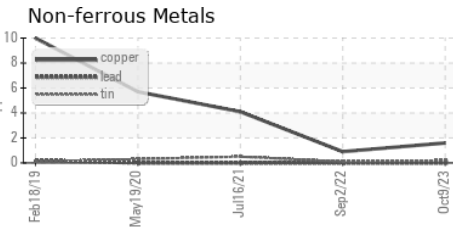
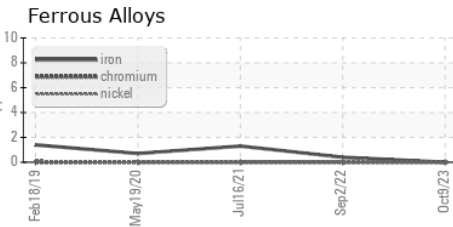
VISUAL	method	limit/base	current	history1	history2
White Metal	scalar	*Visual	NONE	NONE	NONE
Yellow Metal	scalar	*Visual	NONE	NONE	NONE
Precipitate	scalar	*Visual	NONE	NONE	NONE
Silt	scalar	*Visual	NONE	NONE	NONE
Debris	scalar	*Visual	▲ MODER	NONE	LIGHT
Sand/Dirt	scalar	*Visual	NONE	NONE	NONE
Appearance	scalar	*Visual	NORML	NORML	NORML
Odor	scalar	*Visual	NORML	NORML	NORML
Emulsified Water	scalar	*Visual	>0.05	NEG	NEG
Free Water	scalar	*Visual		NEG	NEG

FLUID PROPERTIES	method	limit/base	current	history1	history2
Visc @ 40°C	cSt	ASTM D445	46	44.7	43.6

SAMPLE IMAGES	method	limit/base	current	history1	history2
---------------	--------	------------	---------	----------	----------



GRAPHS



Certificate L2367

Laboratory : WearCheck USA - 501 Madison Ave., Cary, NC 27513
Sample No. : KCPA007721 **Received** : 03 Nov 2023
Lab Number : 05997974 **Diagnosed** : 06 Nov 2023
Unique Number : 10726334 **Diagnostician** : Don Baldrige
Test Package : IND 2 (Additional Tests: KF, PrtCount)

LEXUS OF LOUISVILLE
 2400 BLANKENBAKER AVE
 LOUISVILLE, KY
 US 40299
 Contact: Service Manager

To discuss this sample report, contact Customer Service at 1-800-237-1369.

* - Denotes test methods that are outside of the ISO 17025 scope of accreditation.

Statements of conformity to specifications are based on the simple acceptance decision rule (JCGM 106:2012)

T:
F: