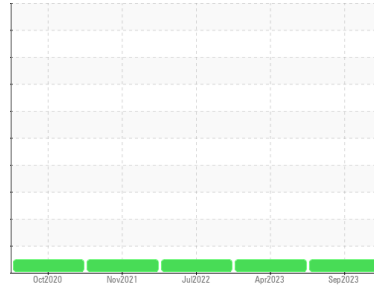




OIL ANALYSIS REPORT

Sample Rating Trend

NORMAL



Area
RIPPEY [200005325]
 Machine Id
82207 SITE 9
 Component
Hydraulic System
 Fluid
SHELL TELLUS S4 VX 32 (60 LTR)

DIAGNOSIS

Recommendation

Resample at the next service interval to monitor.

Wear

All component wear rates are normal.

Contamination

There is no indication of any contamination in the component. The amount and size of particulates present in the system is acceptable.

Fluid Condition

The AN level is acceptable for this fluid. The condition of the oil is suitable for further service.

SAMPLE INFORMATION

	method	limit/base	current	history1	history2
Sample Number	Client Info		NX05999820	NX05913500	NX05672222
Sample Date	Client Info		21 Sep 2023	06 Apr 2023	26 Jul 2022
Machine Age	mths	Client Info	0	0	0
Oil Age	mths	Client Info	0	0	0
Oil Changed	Client Info		N/A	N/A	N/A
Sample Status			NORMAL	NORMAL	NORMAL

WEAR METALS

	method	limit/base	current	history1	history2
PQ	ASTM D8184		40	12	2
Iron	ppm	ASTM D5185m >20	2	3	3
Chromium	ppm	ASTM D5185m >20	0	0	0
Nickel	ppm	ASTM D5185m >20	0	0	0
Titanium	ppm	ASTM D5185m	0	0	0
Silver	ppm	ASTM D5185m	0	0	0
Aluminum	ppm	ASTM D5185m >20	0	<1	0
Lead	ppm	ASTM D5185m >20	2	2	2
Copper	ppm	ASTM D5185m >20	0	<1	<1
Tin	ppm	ASTM D5185m >20	2	2	2
Antimony	ppm	ASTM D5185m	---	---	---
Vanadium	ppm	ASTM D5185m	0	<1	0
Cadmium	ppm	ASTM D5185m	0	0	0

ADDITIVES

	method	limit/base	current	history1	history2
Boron	ppm	ASTM D5185m	0	0	0
Barium	ppm	ASTM D5185m	0	0	1
Molybdenum	ppm	ASTM D5185m	0	0	<1
Manganese	ppm	ASTM D5185m	0	<1	0
Magnesium	ppm	ASTM D5185m	0	0	<1
Calcium	ppm	ASTM D5185m	0	0	<1
Phosphorus	ppm	ASTM D5185m	599	573	565
Zinc	ppm	ASTM D5185m	124	165	122
Sulfur	ppm	ASTM D5185m	505	710	527

CONTAMINANTS

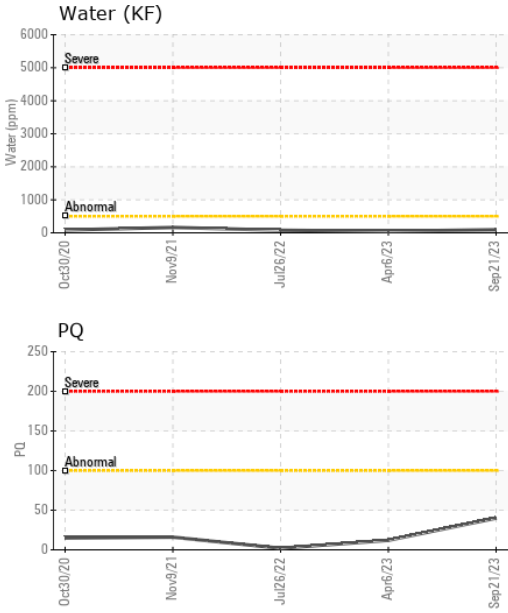
	method	limit/base	current	history1	history2
Silicon	ppm	ASTM D5185m >15	2	2	2
Sodium	ppm	ASTM D5185m	<1	<1	0
Potassium	ppm	ASTM D5185m >20	0	0	<1
Water	%	ASTM D6304 >0.05	0.009	0.005	0.007
ppm Water	ppm	ASTM D6304 >500	92.6	50.7	78.0

FLUID CLEANLINESS

	method	limit/base	current	history1	history2
Particles >4µm	ASTM D7647	>20000	2135	3707	7294
Particles >6µm	ASTM D7647	>2500	627	1121	1781
Particles >14µm	ASTM D7647	>320	69	91	111
Particles >21µm	ASTM D7647	>80	26	21	19
Particles >38µm	ASTM D7647	>20	1	0	1
Particles >71µm	ASTM D7647	>4	0	0	0
Oil Cleanliness	ISO 4406 (c)	>21/18/15	18/16/13	19/17/14	20/18/14



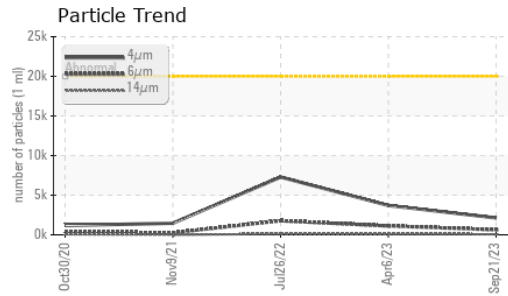
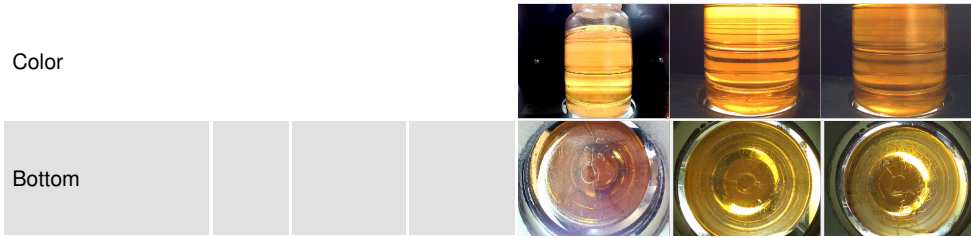
OIL ANALYSIS REPORT



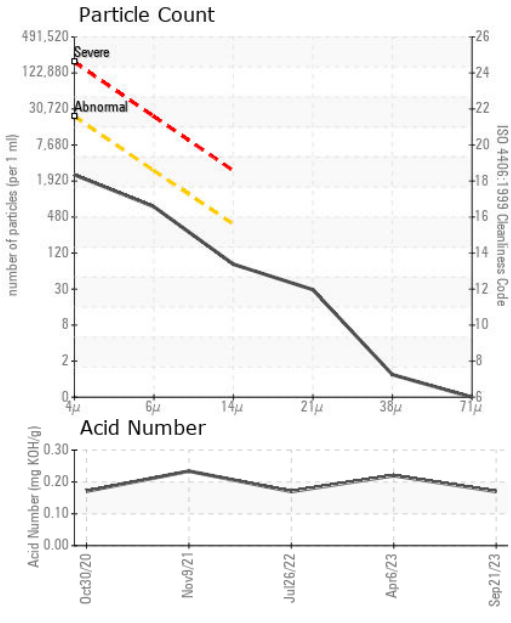
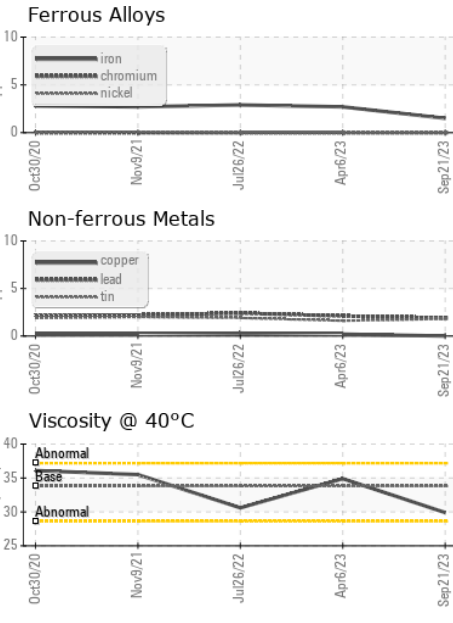
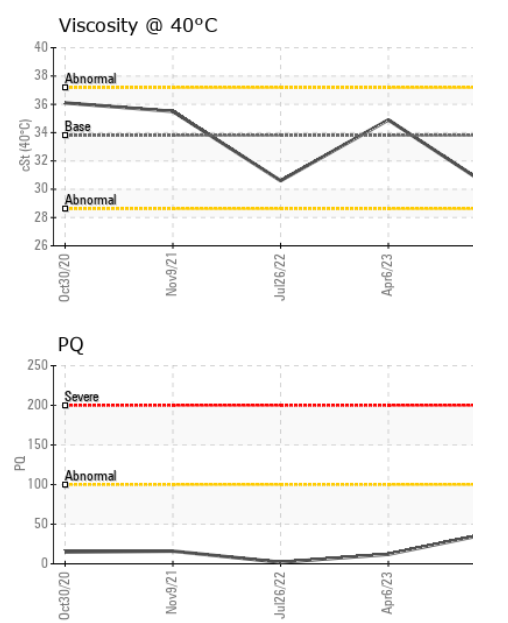
FLUID DEGRADATION		method	limit/base	current	history1	history2
Acid Number (AN)	mg KOH/g	ASTM D8045		0.17	0.22	0.17
VISUAL		method	limit/base	current	history1	history2
White Metal	scalar	*Visual	NONE	NONE	LIGHT	VLITE
Yellow Metal	scalar	*Visual	NONE	NONE	NONE	NONE
Precipitate	scalar	*Visual	NONE	NONE	NONE	NONE
Silt	scalar	*Visual	NONE	NONE	NONE	NONE
Debris	scalar	*Visual	NONE	NONE	NONE	LIGHT
Sand/Dirt	scalar	*Visual	NONE	NONE	NONE	NONE
Appearance	scalar	*Visual	NORML	NORML	NORML	NORML
Odor	scalar	*Visual	NORML	NORML	NORML	NORML
Emulsified Water	scalar	*Visual	>0.05	NEG	NEG	NEG
Free Water	scalar	*Visual		NEG	NEG	NEG

FLUID PROPERTIES		method	limit/base	current	history1	history2
Visc @ 40°C	cSt	ASTM D445	33.8	29.9	34.9	30.6

SAMPLE IMAGES



GRAPHS



Laboratory : WearCheck USA - 501 Madison Ave., Cary, NC 27513
Sample No. : NX05999820 **Received** : 06 Nov 2023
Lab Number : 05999820 **Diagnosed** : 08 Nov 2023
Unique Number : 10728180 **Diagnostician** : Don Baldrige
Test Package : IND 2 (Additional Tests: KF, PQ)

NORDEX USA - Chicago
 300 SOUTH WACKER DRIVE, SUITE 1500
 CHICAGO, IL
 US 60606
 Contact: DEVIN LINEHAN
 DLinehan@nordex-online.com
 T: (312)386-4124
 F: (312)386-7102

Certificate L2367
 To discuss this sample report, contact Customer Service at 1-800-237-1369.
 * - Denotes test methods that are outside of the ISO 17025 scope of accreditation.
 Statements of conformity to specifications are based on the simple acceptance decision rule (JCGM 106:2012)