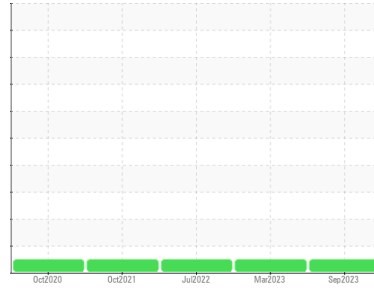




# OIL ANALYSIS REPORT

Sample Rating Trend

**NORMAL**



Area  
**RIPPEY [200005325]**  
 Machine Id  
**82209 SITE 6**  
 Component  
**Hydraulic System**  
 Fluid  
**SHELL TELLUS S4 VX 32 (60 LTR)**

## DIAGNOSIS

### Recommendation

Resample at the next service interval to monitor.

### Wear

All component wear rates are normal.

### Contamination

There is no indication of any contamination in the component. The amount and size of particulates present in the system is acceptable.

### Fluid Condition

The AN level is acceptable for this fluid. The condition of the oil is suitable for further service.

## SAMPLE INFORMATION

	method	limit/base	current	history1	history2
Sample Number	Client Info		<b>NX05999821</b>	NX05913490	NX05672220
Sample Date	Client Info		<b>13 Sep 2023</b>	07 Mar 2023	06 Jul 2022
Machine Age	mths	Client Info	<b>0</b>	0	0
Oil Age	mths	Client Info	<b>0</b>	0	0
Oil Changed	Client Info		<b>N/A</b>	N/A	N/A
Sample Status			<b>NORMAL</b>	NORMAL	NORMAL

## WEAR METALS

	method	limit/base	current	history1	history2
PQ	ASTM D8184		<b>13</b>	17	8
Iron	ppm	ASTM D5185m >20	<b>0</b>	1	2
Chromium	ppm	ASTM D5185m >20	<b>0</b>	0	0
Nickel	ppm	ASTM D5185m >20	<b>0</b>	0	0
Titanium	ppm	ASTM D5185m	<b>0</b>	0	0
Silver	ppm	ASTM D5185m	<b>0</b>	0	0
Aluminum	ppm	ASTM D5185m >20	<b>0</b>	<1	0
Lead	ppm	ASTM D5185m >20	<b>3</b>	2	3
Copper	ppm	ASTM D5185m >20	<b>0</b>	<1	<1
Tin	ppm	ASTM D5185m >20	<b>3</b>	2	2
Antimony	ppm	ASTM D5185m	<b>---</b>	---	---
Vanadium	ppm	ASTM D5185m	<b>0</b>	<1	0
Cadmium	ppm	ASTM D5185m	<b>0</b>	0	0

## ADDITIVES

	method	limit/base	current	history1	history2
Boron	ppm	ASTM D5185m	<b>0</b>	0	0
Barium	ppm	ASTM D5185m	<b>0</b>	0	1
Molybdenum	ppm	ASTM D5185m	<b>0</b>	0	<1
Manganese	ppm	ASTM D5185m	<b>0</b>	<1	<1
Magnesium	ppm	ASTM D5185m	<b>&lt;1</b>	0	1
Calcium	ppm	ASTM D5185m	<b>0</b>	0	<1
Phosphorus	ppm	ASTM D5185m	<b>584</b>	542	510
Zinc	ppm	ASTM D5185m	<b>134</b>	154	155
Sulfur	ppm	ASTM D5185m	<b>535</b>	674	616

## CONTAMINANTS

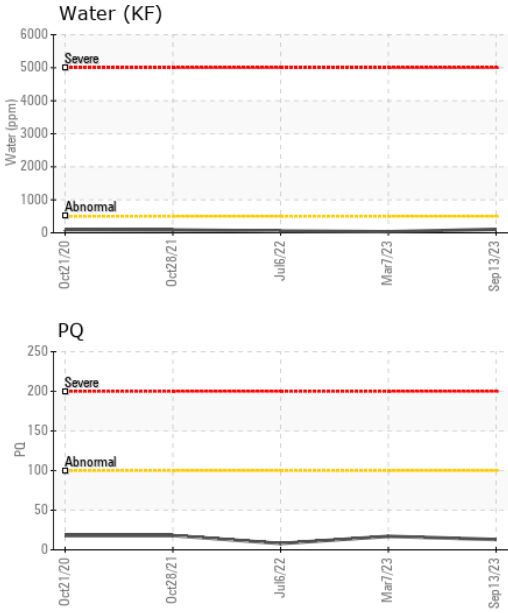
	method	limit/base	current	history1	history2
Silicon	ppm	ASTM D5185m >15	<b>3</b>	3	4
Sodium	ppm	ASTM D5185m	<b>&lt;1</b>	<1	0
Potassium	ppm	ASTM D5185m >20	<b>0</b>	0	<1
Water	%	ASTM D6304 >0.05	<b>0.010</b>	0.003	0.005
ppm Water	ppm	ASTM D6304 >500	<b>104.5</b>	33.0	57.3

## FLUID CLEANLINESS

	method	limit/base	current	history1	history2
Particles >4µm	ASTM D7647	>20000	<b>3441</b>	760	980
Particles >6µm	ASTM D7647	>2500	<b>1220</b>	191	299
Particles >14µm	ASTM D7647	>320	<b>100</b>	21	28
Particles >21µm	ASTM D7647	>80	<b>26</b>	4	8
Particles >38µm	ASTM D7647	>20	<b>2</b>	0	0
Particles >71µm	ASTM D7647	>4	<b>0</b>	0	0
Oil Cleanliness	ISO 4406 (c)	>21/18/15	<b>19/17/14</b>	17/15/12	17/15/12



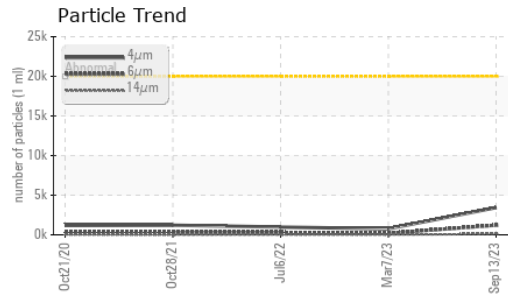
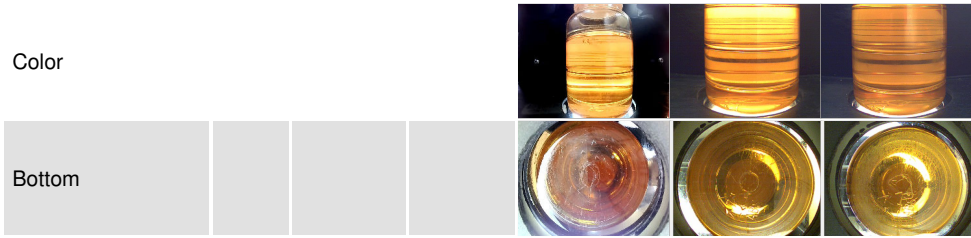
# OIL ANALYSIS REPORT



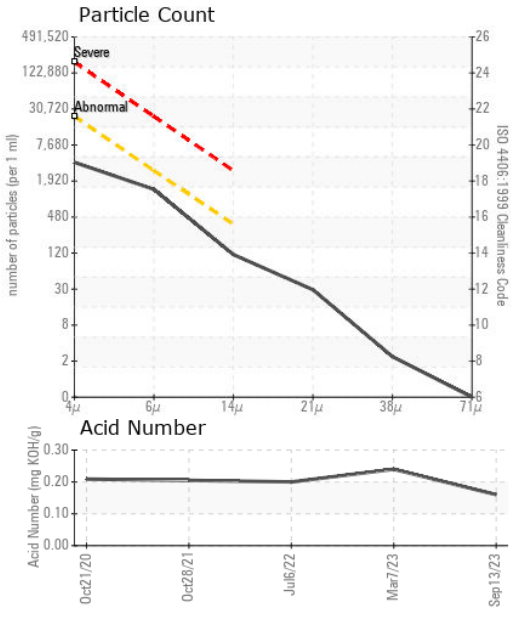
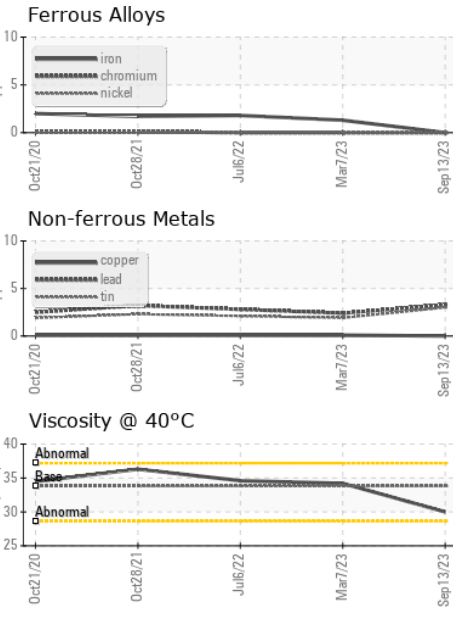
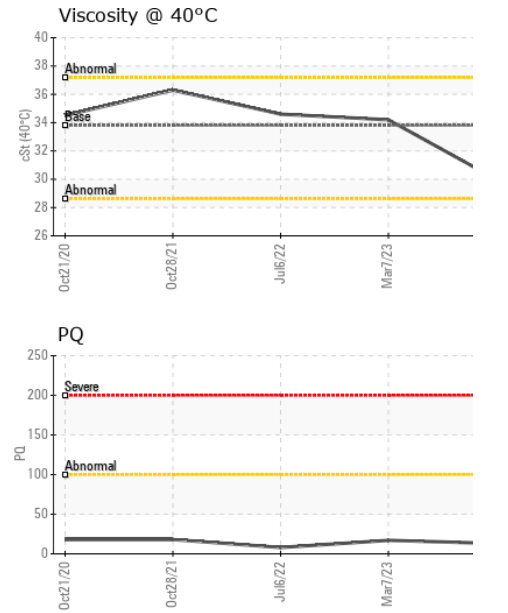
FLUID DEGRADATION		method	limit/base	current	history1	history2
Acid Number (AN)	mg KOH/g	ASTM D8045		<b>0.16</b>	0.24	0.20
VISUAL		method	limit/base	current	history1	history2
White Metal	scalar	*Visual	NONE	<b>NONE</b>	NONE	NONE
Yellow Metal	scalar	*Visual	NONE	<b>NONE</b>	NONE	NONE
Precipitate	scalar	*Visual	NONE	<b>NONE</b>	NONE	NONE
Silt	scalar	*Visual	NONE	<b>NONE</b>	NONE	NONE
Debris	scalar	*Visual	NONE	<b>NONE</b>	NONE	NONE
Sand/Dirt	scalar	*Visual	NONE	<b>NONE</b>	NONE	NONE
Appearance	scalar	*Visual	NORML	<b>NORML</b>	NORML	NORML
Odor	scalar	*Visual	NORML	<b>NORML</b>	NORML	NORML
Emulsified Water	scalar	*Visual	>0.05	<b>NEG</b>	NEG	NEG
Free Water	scalar	*Visual		<b>NEG</b>	NEG	NEG

FLUID PROPERTIES		method	limit/base	current	history1	history2
Visc @ 40°C	cSt	ASTM D445	33.8	<b>30.0</b>	34.2	34.6

### SAMPLE IMAGES



### GRAPHS



**Laboratory** : WearCheck USA - 501 Madison Ave., Cary, NC 27513  
**Sample No.** : NX05999821 **Received** : 06 Nov 2023  
**Lab Number** : 05999821 **Diagnosed** : 08 Nov 2023  
**Unique Number** : 10728181 **Diagnostician** : Don Baldrige  
**Test Package** : IND 2 ( Additional Tests: KF, PQ )

**NORDEX USA - Chicago**  
 300 SOUTH WACKER DRIVE, SUITE 1500  
 CHICAGO, IL  
 US 60606  
 Contact: DEVIN LINEHAN  
 DLinehan@nordex-online.com  
 T: (312)386-4124  
 F: (312)386-7102

Certificate L2367  
 To discuss this sample report, contact Customer Service at 1-800-237-1369.  
 \* - Denotes test methods that are outside of the ISO 17025 scope of accreditation.  
 Statements of conformity to specifications are based on the simple acceptance decision rule (JCGM 106:2012)