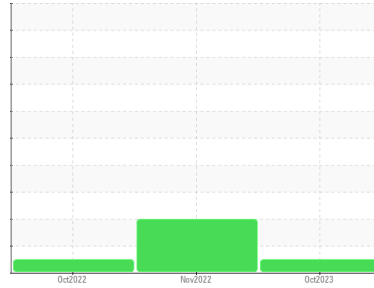




FUEL REPORT

Sample Rating Trend

NORMAL



Area
GUAY SON [CONHER]
 Machine Id
Chino I Diesel fuel IBACO
 Component
Diesel Fuel
 Fluid
NOT GIVEN (--- GAL)

DIAGNOSIS

Recommendation

No corrective action is recommended at this time.

Corrosion

All metal levels are normal indicating no corrosion in the system.

Contaminants

The water content is negligible. There is no indication of any contamination in the fuel. The amount and size of particulates present in the system are acceptable.

Fuel Condition

The condition of the fuel is acceptable for the time in service.

SAMPLE INFORMATION		method	limit/base	current	history1	history2
Sample Number	Client Info			KL0013362	KL0011283	KL0010125
Sample Date	Client Info			23 Oct 2023	22 Nov 2022	04 Oct 2022
Machine Age	hrs	Client Info		0	0	0
Sample Status				NORMAL	ABNORMAL	NORMAL

PHYSICAL PROPERTIES		method	limit/base	current	history1	history2
Visc @ 40°C	cSt	ASTM D445		2.57	2.64	2.44

SULFUR CONTENT		method	limit/base	current	history1	history2
Sulfur	ppm	ASTM D5185m		64	23	0

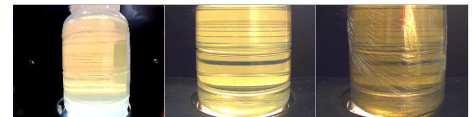
CONTAMINANTS		method	limit/base	current	history1	history2
Silicon	ppm	ASTM D5185m	<1.0	0	<1	<1
Sodium	ppm	ASTM D5185m	<0.1	1	1	1
Potassium	ppm	ASTM D5185m	<0.1	0	0	0
Water	%	ASTM D6304	<0.05	0.005	0.003	0.003
ppm Water	ppm	ASTM D6304	<500	50.5	38.5	39.1

FLUID CLEANLINESS		method	limit/base	current	history1	history2
Particles >4µm		ASTM D7647	>2500	1121	42171	1354
Particles >6µm		ASTM D7647	>640	375	▲ 14346	260
Particles >14µm		ASTM D7647	>80	36	▲ 899	21
Particles >21µm		ASTM D7647	>20	10	▲ 212	5
Particles >38µm		ASTM D7647	>4	1	▲ 5	0
Particles >71µm		ASTM D7647	>3	0	0	0
Oil Cleanliness		ISO 4406 (c)	>18/16/13	17/16/12	▲ 21/17	15/12

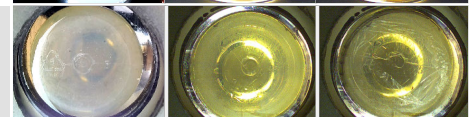
HEAVY METALS		method	limit/base	current	history1	history2
Aluminum	ppm	ASTM D5185m	<0.1	0	0	<1
Nickel	ppm	ASTM D5185m	<0.1	0	0	<1
Lead	ppm	ASTM D5185m	<0.1	0	0	0
Vanadium	ppm	ASTM D5185m	<0.1	0	0	1
Iron	ppm	ASTM D5185m	<0.1	0	0	0
Calcium	ppm	ASTM D5185m	<0.1	0	<1	0
Magnesium	ppm	ASTM D5185m	<0.1	0	0	0
Phosphorus	ppm	ASTM D5185m	<0.1	0	0	0
Zinc	ppm	ASTM D5185m	<0.1	0	0	0

SAMPLE IMAGES		method	limit/base	current	history1	history2
---------------	--	--------	------------	---------	----------	----------

Color

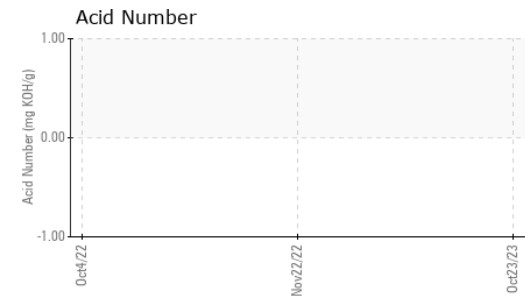
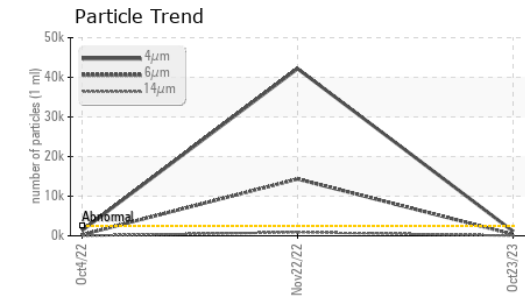
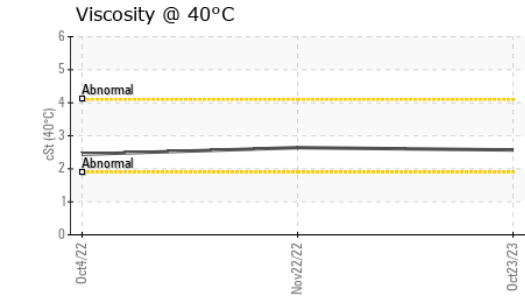
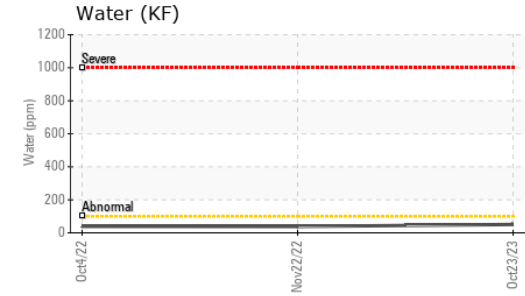
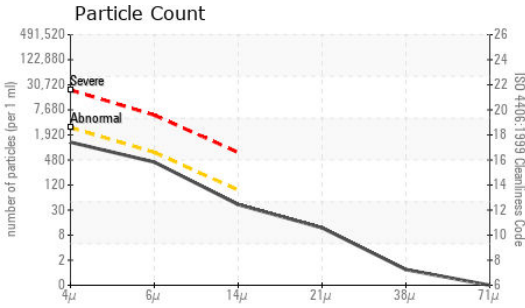


Bottom

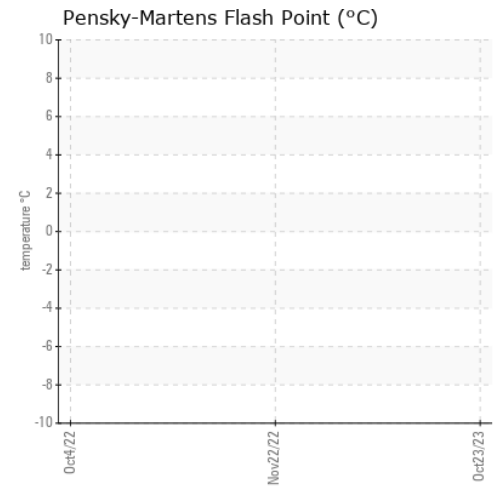




FUEL REPORT



GRAPHS



Laboratory : WearCheck USA - 501 Madison Ave., Cary, NC 27513
Sample No. : KL0013362 **Received** : 07 Nov 2023
Lab Number : 06001184 **Diagnosed** : 21 Nov 2023
Unique Number : 10729544 **Diagnostician** : Doug Bogart
Test Package : MOB 2 (Additional Tests: KF, PrtCount)

To discuss this sample report, contact Customer Service at 1-800-237-1369.

* - Denotes test methods that are outside of the ISO 17025 scope of accreditation.

Statements of conformity to specifications are based on the simple acceptance decision rule (JCGM 106:2012)

CONOR
 JUAREZ 348
 HERMOSILLO,
 MX 83140
 Contact: EDUARDO GARCIA
 egarcia.comsa@gmail.com
 T: (526)622-1581 x:81
 F: x: