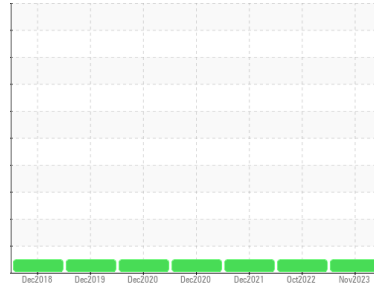




FUEL REPORT

Sample Rating Trend

NORMAL



Machine Id
CUMMINS/ONAN BRIARCLIFF PUMP STATION

Component
Diesel Fuel
Fluid
NOT GIVEN (--- GAL)

DIAGNOSIS

Recommendation

This is a baseline read-out on the submitted sample.

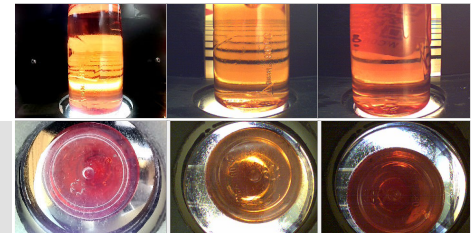
SAMPLE INFORMATION		method	limit/base	current	history1	history2
Sample Number	Client Info			WC0834452	WC0749031	WC0651541
Sample Date	Client Info			12 Nov 2023	18 Oct 2022	08 Dec 2021
Machine Age	hrs	Client Info		0	538	0
Sample Status				NORMAL	NORMAL	NORMAL

SULFUR CONTENT		method	limit/base	current	history1	history2
Sulfur	ppm	ASTM D5185m		0	133	30

CONTAMINANTS		method	limit/base	current	history1	history2
Silicon	ppm	ASTM D5185m	<1.0	0	1	0
Sodium	ppm	ASTM D5185m	<0.1	<1	0	0
Potassium	ppm	ASTM D5185m	<0.1	0	1	0

HEAVY METALS		method	limit/base	current	history1	history2
Aluminum	ppm	ASTM D5185m	<0.1	0	<1	0
Nickel	ppm	ASTM D5185m	<0.1	0	0	0
Lead	ppm	ASTM D5185m	<0.1	0	0	0
Vanadium	ppm	ASTM D5185m	<0.1	0	0	0
Iron	ppm	ASTM D5185m	<0.1	0	<1	0
Calcium	ppm	ASTM D5185m	<0.1	0	<1	0
Magnesium	ppm	ASTM D5185m	<0.1	0	1	0
Phosphorus	ppm	ASTM D5185m	<0.1	<1	5	0
Zinc	ppm	ASTM D5185m	<0.1	0	<1	0

SAMPLE IMAGES		method	limit/base	current	history1	history2
Color						
Bottom						





FUEL REPORT

GRAPHS



Certificate L2367

Laboratory : WearCheck USA - 501 Madison Ave., Cary, NC 27513
Sample No. : WC0834452 **Received** : 13 Nov 2023
Lab Number : 06006630 **Diagnosed** : 16 Nov 2023
Unique Number : 10740392 **Diagnostician** : Jonathan Hester
Test Package : MOB 1

To discuss this sample report, contact Customer Service at 1-800-237-1369.

* - Denotes test methods that are outside of the ISO 17025 scope of accreditation.

Statements of conformity to specifications are based on the simple acceptance decision rule (JCGM 106:2012)

GEN TECH LTD
 3017 RT 9W
 NEW WINDSOR, NY
 US 12553
 Contact: JOE SAYEGH
 joe@gentechltd.com
 T: (845)568-0500
 F: (845)568-3073