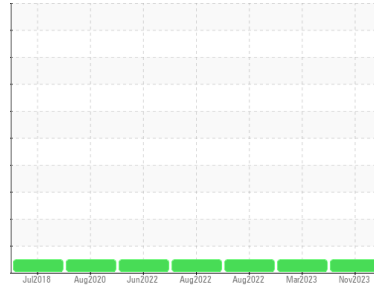




OIL ANALYSIS REPORT

Sample Rating Trend

NORMAL



Machine Id
E05432M E05432M

Component
Front Rear Pump

Fluid
ROYAL PURPLE SYNFILM 32 (--- QTS)

DIAGNOSIS

Recommendation

Resample at the next service interval to monitor.

Wear

All component wear rates are normal.

Contamination

There is no indication of any contamination in the oil.

Fluid Condition

The AN level is acceptable for this fluid. The condition of the oil is suitable for further service.

SAMPLE INFORMATION		method	limit/base	current	history1	history2
Sample Number	Client Info			RP0031815	RP0022158	RP0022154
Sample Date	Client Info			10 Nov 2023	03 Mar 2023	31 Aug 2022
Machine Age	hrs	Client Info		33416	28903	25963
Oil Age	hrs	Client Info		0	28903	0
Oil Changed	Client Info			Not Changed	Not Changed	Not Changed
Sample Status				NORMAL	NORMAL	NORMAL

WEAR METALS		method	limit/base	current	history1	history2
Iron	ppm	ASTM D5185m	>90	0	4	3
Chromium	ppm	ASTM D5185m	>5	0	<1	0
Nickel	ppm	ASTM D5185m	>5	0	0	0
Titanium	ppm	ASTM D5185m	>3	<1	0	0
Silver	ppm	ASTM D5185m	>3	0	<1	0
Aluminum	ppm	ASTM D5185m	>7	0	<1	<1
Lead	ppm	ASTM D5185m	>12	<1	2	2
Copper	ppm	ASTM D5185m	>30	2	2	2
Tin	ppm	ASTM D5185m	>9	<1	<1	<1
Vanadium	ppm	ASTM D5185m		<1	0	0
Cadmium	ppm	ASTM D5185m		0	0	0

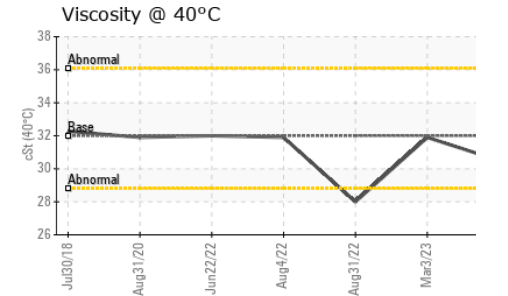
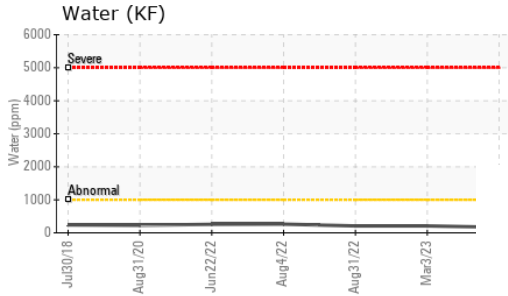
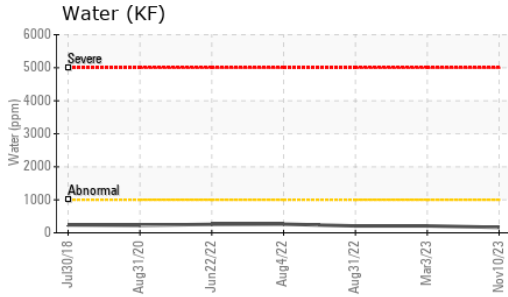
ADDITIVES		method	limit/base	current	history1	history2
Boron	ppm	ASTM D5185m		0	0	0
Barium	ppm	ASTM D5185m		0	0	2
Molybdenum	ppm	ASTM D5185m		0	0	0
Manganese	ppm	ASTM D5185m		0	<1	<1
Magnesium	ppm	ASTM D5185m	90	0	56	59
Calcium	ppm	ASTM D5185m		0	4	1
Phosphorus	ppm	ASTM D5185m		0	10	9
Zinc	ppm	ASTM D5185m		0	10	8

CONTAMINANTS		method	limit/base	current	history1	history2
Silicon	ppm	ASTM D5185m	>60	<1	1	2
Sodium	ppm	ASTM D5185m		1	<1	0
Potassium	ppm	ASTM D5185m	>20	0	<1	2
Water	%	ASTM D6304	>.1	0.016	0.020	0.020
ppm Water	ppm	ASTM D6304	>1000	165.9	209.0	208.8

FLUID DEGRADATION		method	limit/base	current	history1	history2
Acid Number (AN)	mg KOH/g	ASTM D8045		0.35	0.43	0.42

VISUAL		method	limit/base	current	history1	history2
White Metal	scalar	*Visual	NONE	NONE	NONE	NONE
Yellow Metal	scalar	*Visual	NONE	NONE	NONE	NONE
Precipitate	scalar	*Visual	NONE	NONE	NONE	NONE
Silt	scalar	*Visual	NONE	NONE	NONE	NONE
Debris	scalar	*Visual	NONE	NONE	NONE	NONE
Sand/Dirt	scalar	*Visual	NONE	NONE	NONE	NONE
Appearance	scalar	*Visual	NORML	NORML	NORML	NORML
Odor	scalar	*Visual	NORML	NORML	NORML	NORML
Emulsified Water	scalar	*Visual	>.1	NEG	NEG	NEG
Free Water	scalar	*Visual		NEG	NEG	NEG

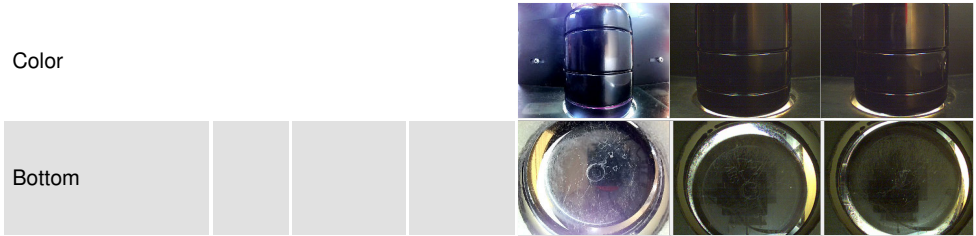
OIL ANALYSIS REPORT



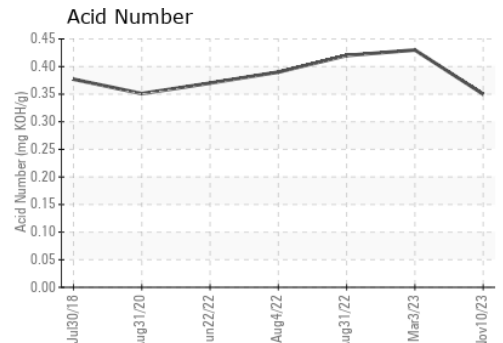
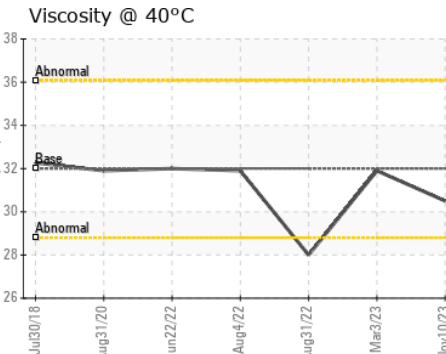
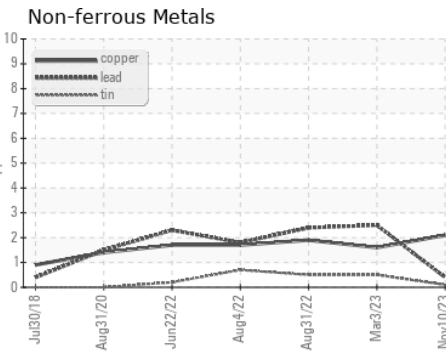
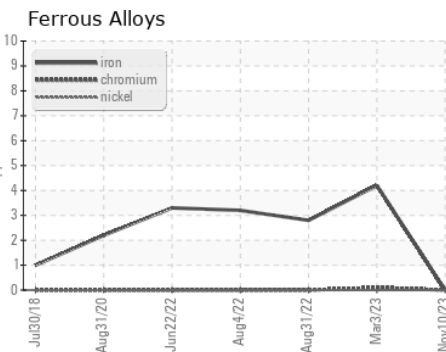
FLUID PROPERTIES

method	limit/base	current	history1	history2
Visc @ 40°C	cSt ASTM D445 32	30.5	31.9	28.0

SAMPLE IMAGES



GRAPHS



Certificate L2367

Laboratory : WearCheck USA - 501 Madison Ave., Cary, NC 27513
Sample No. : RP0031815 **Received** : 14 Nov 2023
Lab Number : 06007768 **Diagnosed** : 29 Nov 2023
Unique Number : 10741530 **Diagnostician** : Doug Bogart
Test Package : IND 2

ENERGY TRANSFER - EPPS
 745 HWY 134
 EPPS, LA
 US 71237
 Contact: LOUIS FREELAND
 louis.freeland@energytrasfer.com

To discuss this sample report, contact Customer Service at 1-800-237-1369.

* - Denotes test methods that are outside of the ISO 17025 scope of accreditation.

Statements of conformity to specifications are based on the simple acceptance decision rule (JCGM 106:2012)

T:
F: