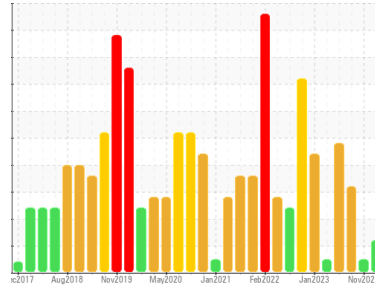




# PROBLEM SUMMARY

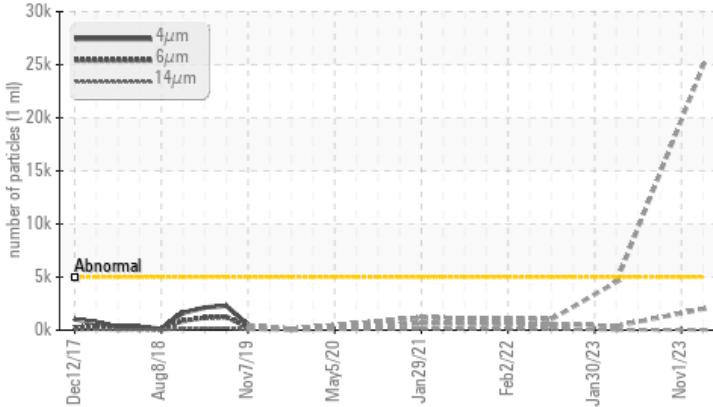
Area  
**STILL TABLE VAT PUMP HAM BONE**  
 Machine Id  
**B36668**  
 Component  
**Hydraulic System**  
 Fluid  
**PETRO CANADA PURITY FG AW HYDRAULIC 46 (--- GAL)**

Sample Rating Trend



## COMPONENT CONDITION SUMMARY

▲ Particle Trend



## RECOMMENDATION

We recommend you service the filters on this component. We recommend an early resample to monitor this condition. NOTE: Please provide information regarding reservoir capacity, filter type and micron rating with next sample. Please specify the component make and model with your next sample.

## PROBLEMATIC TEST RESULTS

Sample Status			<b>ABNORMAL</b>	---	ABNORMAL
Particles >4µm	ASTM D7647	>5000	▲ 24852	---	---
Particles >6µm	ASTM D7647	>1300	▲ 2005	---	---
Oil Cleanliness	ISO 4406 (c)	>19/17/14	▲ 22/18/12	---	---

Customer Id: ROCROCUS  
 Sample No.: WC0866726  
 Lab Number: 06008280  
 Test Package: IND 2



To manage this report scan the QR code

To discuss the diagnosis or test data:  
 Wes Davis +1 905-569-8600 x223  
[wesd@wearcheck.ca](mailto:wesd@wearcheck.ca)

To change component or sample information:  
 Customer Service +1 1-800-237-1369  
[customerservice@wearcheck.com](mailto:customerservice@wearcheck.com)

## RECOMMENDED ACTIONS

Action	Status	Date	Done By	Description
Change Filter	---	---	?	We recommend you service the filters on this component.
Resample	---	---	?	We recommend an early resample to monitor this condition.
Information Required	---	---	?	NOTE: Please provide information regarding reservoir capacity, filter type and micron rating with next sample. Please specify the component make and model with your next sample.

## HISTORICAL DIAGNOSIS

### 01 Nov 2023 Diag:

UNKNOWN



view report



### 10 Aug 2023 Diag: Jonathan Hester

WATER



We advise that you perform a filter service, and use off-line filtration to improve the cleanliness of the system fluid. Resample at the next service interval to monitor. We were unable to perform a particle count due to a high concentration of particles present in this sample. All component wear rates are normal. Appearance is milky. There is a high amount of visible silt present in the sample. There is a light concentration of water present in the oil. The AN level is acceptable for this fluid. The condition of the oil is suitable for further service.

view report



### 03 Aug 2023 Diag: Don Baldrige

WATER



We advise that you check for the source of water entry. We advise that you follow the water drain-off procedure for this component, and use off-line filtration to improve the cleanliness of the system fluid. Resample at the next service interval to monitor. We were unable to perform a particle count due to a high concentration of particles present in this sample. All component wear rates are normal. Appearance is hazy. There is a light concentration of water present in the oil. There is a moderate amount of visible silt present in the sample. Free water present. The AN level is acceptable for this fluid.

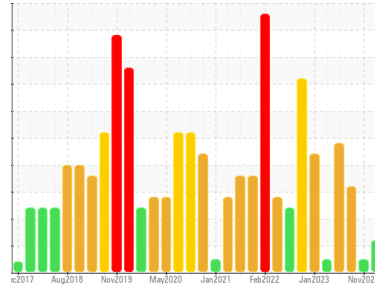
view report





# OIL ANALYSIS REPORT

Sample Rating Trend



ISO



Area  
**STILL TABLE VAT PUMP HAM BONE**  
 Machine Id  
**B36668**  
 Component  
**Hydraulic System**  
 Fluid  
**PETRO CANADA PURITY FG AW HYDRAULIC 46 (--- GAL)**

## DIAGNOSIS

### Recommendation

We recommend you service the filters on this component. We recommend an early resample to monitor this condition. NOTE: Please provide information regarding reservoir capacity, filter type and micron rating with next sample. Please specify the component make and model with your next sample.

### Wear

All component wear rates are normal.

### Contamination

There is a moderate amount of silt (particulates < 14 microns in size) present in the oil. The system cleanliness is above the acceptable limit for the target ISO 4406 cleanliness code.

### Fluid Condition

The AN level is acceptable for this fluid. The oil is still serviceable provided that the contaminant(s) can be reduced to acceptable levels.

## SAMPLE INFORMATION

	method	limit/base	current	history1	history2
Sample Number	Client Info		<b>WC0866726</b>	WC0866728	WC0814279
Sample Date	Client Info		<b>02 Nov 2023</b>	01 Nov 2023	10 Aug 2023
Machine Age	days	Client Info	<b>0</b>	0	0
Oil Age	days	Client Info	<b>0</b>	0	0
Oil Changed	Client Info		<b>N/A</b>	Not Changd	N/A
Sample Status			<b>ABNORMAL</b>	---	ABNORMAL

## WEAR METALS

	method	limit/base	current	history1	history2
Iron	ppm	ASTM D5185m >20	<b>0</b>	0	<1
Chromium	ppm	ASTM D5185m >10	<b>0</b>	0	0
Nickel	ppm	ASTM D5185m >10	<b>0</b>	0	0
Titanium	ppm	ASTM D5185m	<b>0</b>	0	0
Silver	ppm	ASTM D5185m	<b>0</b>	0	0
Aluminum	ppm	ASTM D5185m >10	<b>0</b>	0	1
Lead	ppm	ASTM D5185m >10	<b>0</b>	0	0
Copper	ppm	ASTM D5185m >75	<b>&lt;1</b>	0	<1
Tin	ppm	ASTM D5185m >10	<b>0</b>	0	0
Vanadium	ppm	ASTM D5185m	<b>&lt;1</b>	0	<1
Cadmium	ppm	ASTM D5185m	<b>0</b>	0	0

## ADDITIVES

	method	limit/base	current	history1	history2
Boron	ppm	ASTM D5185m	<b>0</b>	0	0
Barium	ppm	ASTM D5185m	<b>0</b>	0	0
Molybdenum	ppm	ASTM D5185m	<b>0</b>	0	0
Manganese	ppm	ASTM D5185m	<b>&lt;1</b>	0	<1
Magnesium	ppm	ASTM D5185m	<b>&lt;1</b>	0	0
Calcium	ppm	ASTM D5185m	<b>&lt;1</b>	0	0
Phosphorus	ppm	ASTM D5185m	<b>471</b>	422	436
Zinc	ppm	ASTM D5185m	<b>6</b>	▲ 0	0
Sulfur	ppm	ASTM D5185m	<b>538</b>	▲ 288	561

## CONTAMINANTS

	method	limit/base	current	history1	history2
Silicon	ppm	ASTM D5185m >20	<b>4</b>	4	2
Sodium	ppm	ASTM D5185m	<b>4</b>	4	1
Potassium	ppm	ASTM D5185m >20	<b>&lt;1</b>	<1	0

## FLUID CLEANLINESS

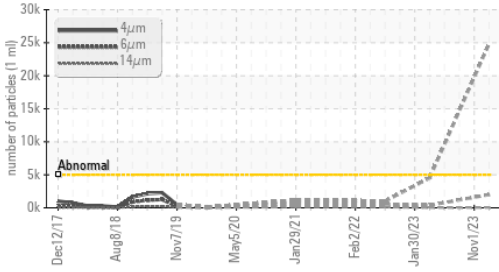
	method	limit/base	current	history1	history2
Particles >4µm	ASTM D7647	>5000	▲ <b>24852</b>	---	---
Particles >6µm	ASTM D7647	>1300	▲ <b>2005</b>	---	---
Particles >14µm	ASTM D7647	>160	<b>25</b>	---	---
Particles >21µm	ASTM D7647	>40	<b>4</b>	---	---
Particles >38µm	ASTM D7647	>10	<b>0</b>	---	---
Particles >71µm	ASTM D7647	>3	<b>0</b>	---	---
Oil Cleanliness	ISO 4406 (c)	>19/17/14	▲ <b>22/18/12</b>	---	---

## FLUID DEGRADATION

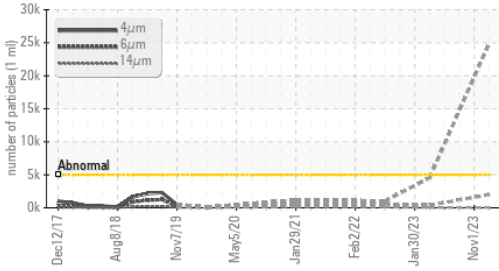
	method	limit/base	current	history1	history2
Acid Number (AN)	mg KOH/g	ASTM D8045 0.26	<b>0.23</b>	0.24	0.17

# OIL ANALYSIS REPORT

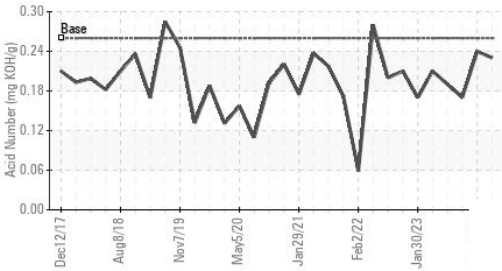
▲ Particle Trend



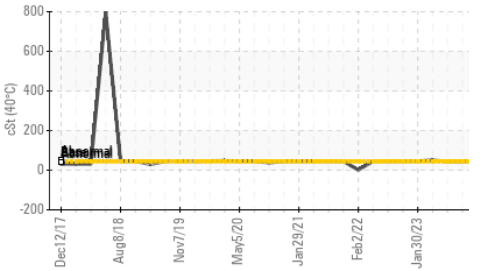
▲ Particle Trend



Acid Number



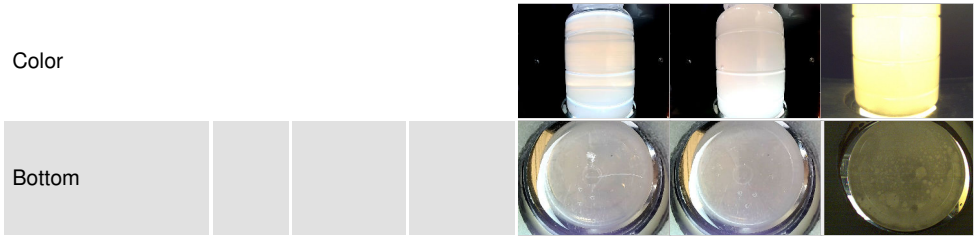
Viscosity @ 40°C



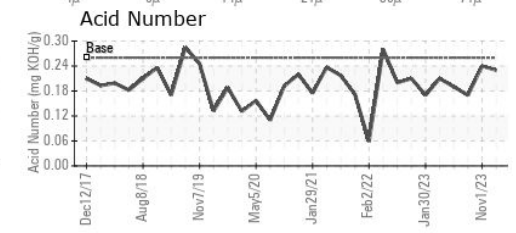
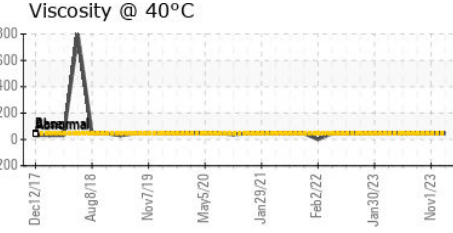
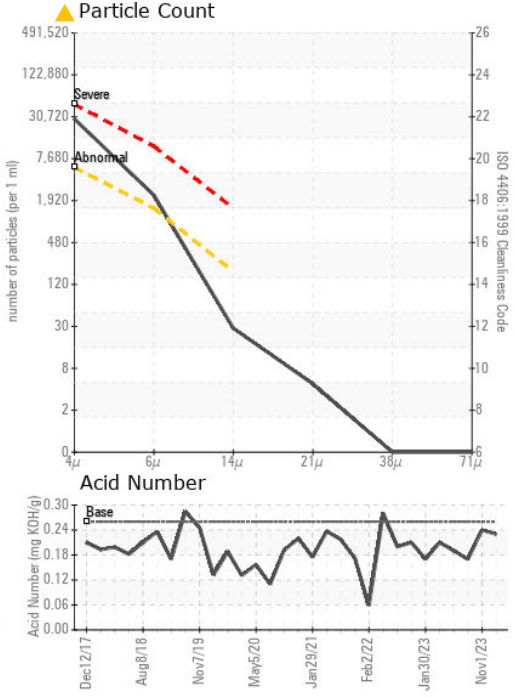
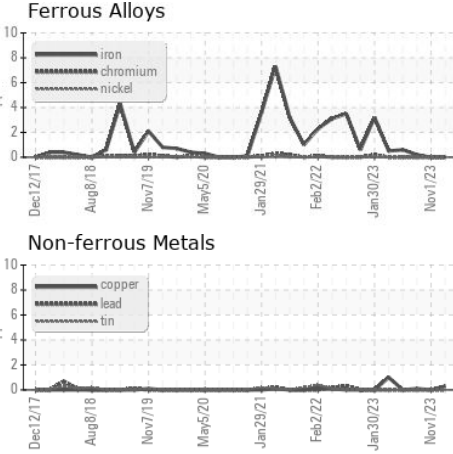
VISUAL	method	limit/base	current	history1	history2
White Metal	scalar	*Visual	NONE	NONE	NONE
Yellow Metal	scalar	*Visual	NONE	NONE	NONE
Precipitate	scalar	*Visual	NONE	NONE	NONE
Silt	scalar	*Visual	NONE	NONE	▲ HEAVY
Debris	scalar	*Visual	NONE	NONE	NONE
Sand/Dirt	scalar	*Visual	NONE	NONE	NONE
Appearance	scalar	*Visual	NORML	NORML	▲ MILKY
Odor	scalar	*Visual	NORML	NORML	NORML
Emulsified Water	scalar	*Visual	>0.1	NEG	0.2%
Free Water	scalar	*Visual		NEG	NEG

FLUID PROPERTIES	method	limit/base	current	history1	history2
Visc @ 40°C	cSt	ASTM D445	45.36	45.1	44.4

SAMPLE IMAGES	method	limit/base	current	history1	history2
---------------	--------	------------	---------	----------	----------



## GRAPHS



Certificate L2367

**Laboratory** : WearCheck USA - 501 Madison Ave., Cary, NC 27513  
**Sample No.** : WC0866726  
**Lab Number** : 06008280  
**Unique Number** : 10742042  
**Test Package** : IND 2

**Rochelle Foods - PRE**  
 1001 South Main, P.O. Box 45  
 Rochelle, IL  
 US 61068  
 Contact: JAMES ROBINSON III  
 jrobinson3@hormel.com

To discuss this sample report, contact Customer Service at 1-800-237-1369.

\* - Denotes test methods that are outside of the ISO 17025 scope of accreditation.

Statements of conformity to specifications are based on the simple acceptance decision rule (JCGM 106:2012)

T: (815)562-4147