



PROBLEM SUMMARY

Area
[168097-N2STV4W]
 Machine Id
HYSTER 110 FORKLIFT U00SV16438X
 Component
Transmission
 Fluid
SHELL SPIRAX S4 TXM (9 GAL)

Sample Rating Trend

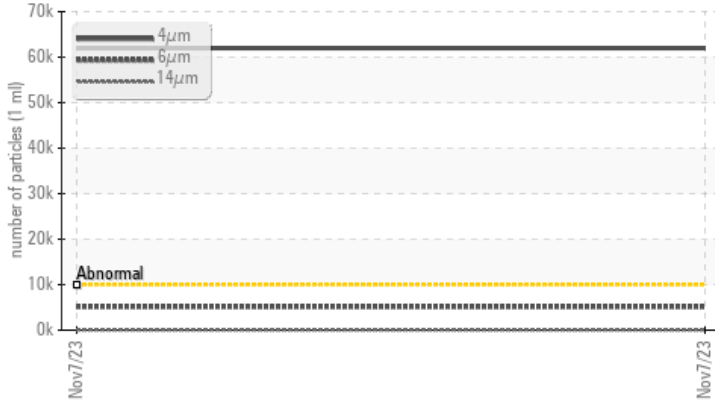


ISO



COMPONENT CONDITION SUMMARY

▲ Particle Trend



RECOMMENDATION

We recommend you service the filters on this component if applicable. Resample at the next service interval to monitor.

PROBLEMATIC TEST RESULTS

Sample Status				ABNORMAL	---	---
Particles >4µm	ASTM D7647	>10000	▲ 61976	---	---	
Particles >6µm	ASTM D7647	>2500	▲ 5146	---	---	
Oil Cleanliness	ISO 4406 (c)	>20/18/15	▲ 23/20/13	---	---	
PrtFilter					<i>no image</i>	<i>no image</i>

Customer Id: BRITAMFL
 Sample No.: PH06008298
 Lab Number: 06008298
 Test Package: PLANT



To manage this report scan the QR code

To discuss the diagnosis or test data:
 Jonathan Hester +1 919-379-4092 x4092
jhester@wearcheckusa.com

To change component or sample information:
 Customer Service +1 1-800-237-1369
customerservice@wearcheck.com

RECOMMENDED ACTIONS

Action	Status	Date	Done By	Description
Change Filter	---	---	?	We recommend you service the filters on this component if applicable.

HISTORICAL DIAGNOSIS



OIL ANALYSIS REPORT

Sample Rating Trend

ISO



Area
[168097-N2STV4W]
 Machine Id
HYSTER 110 FORKLIFT U00SV16438X
 Component
Transmission
 Fluid
SHELL SPIRAX S4 TXM (9 GAL)



DIAGNOSIS

Recommendation

We recommend you service the filters on this component if applicable. Resample at the next service interval to monitor.

Wear

All component wear rates are normal.

Contamination

There is a high amount of silt (particulates < 14 microns in size) present in the fluid.

Fluid Condition

The AN level is acceptable for this fluid. The condition of the fluid is suitable for further service.

SAMPLE INFORMATION

method	limit/base	current	history1	history2
Sample Number	Client Info	PH06008298	---	---
Sample Date	Client Info	07 Nov 2023	---	---
Machine Age	hrs Client Info	0	---	---
Oil Age	hrs Client Info	998	---	---
Oil Changed	Client Info	N/A	---	---
Sample Status		ABNORMAL	---	---

CONTAMINATION

method	limit/base	current	history1	history2
Water	WC Method >0.1	NEG	---	---

WEAR METALS

method	limit/base	current	history1	history2
Iron	ppm ASTM D5185m >200	14	---	---
Chromium	ppm ASTM D5185m >10	<1	---	---
Nickel	ppm ASTM D5185m	0	---	---
Titanium	ppm ASTM D5185m	0	---	---
Silver	ppm ASTM D5185m	0	---	---
Aluminum	ppm ASTM D5185m >50	2	---	---
Lead	ppm ASTM D5185m >50	<1	---	---
Copper	ppm ASTM D5185m >200	4	---	---
Tin	ppm ASTM D5185m >10	0	---	---
Vanadium	ppm ASTM D5185m	<1	---	---
Cadmium	ppm ASTM D5185m	0	---	---

ADDITIVES

method	limit/base	current	history1	history2
Boron	ppm ASTM D5185m 53	112	---	---
Barium	ppm ASTM D5185m 0.3	<1	---	---
Molybdenum	ppm ASTM D5185m 0.0	2	---	---
Manganese	ppm ASTM D5185m	<1	---	---
Magnesium	ppm ASTM D5185m 7.0	20	---	---
Calcium	ppm ASTM D5185m 2456	3492	---	---
Phosphorus	ppm ASTM D5185m 822	1244	---	---
Zinc	ppm ASTM D5185m 988	1521	---	---
Sulfur	ppm ASTM D5185m 3794	3460	---	---

CONTAMINANTS

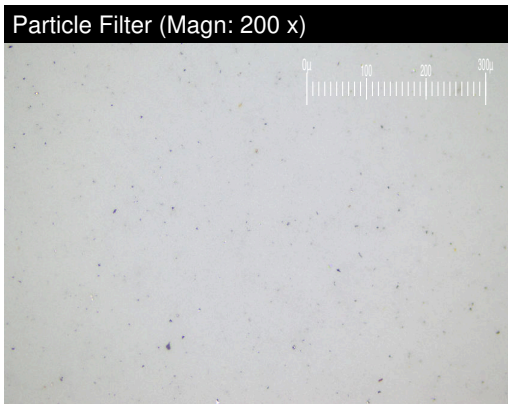
method	limit/base	current	history1	history2
Silicon	ppm ASTM D5185m >50	9	---	---
Sodium	ppm ASTM D5185m	3	---	---
Potassium	ppm ASTM D5185m >20	<1	---	---

FLUID CLEANLINESS

method	limit/base	current	history1	history2
Particles >4µm	ASTM D7647 >10000	▲ 61976	---	---
Particles >6µm	ASTM D7647 >2500	▲ 5146	---	---
Particles >14µm	ASTM D7647 >320	64	---	---
Particles >21µm	ASTM D7647 >80	17	---	---
Particles >38µm	ASTM D7647 >20	1	---	---
Particles >71µm	ASTM D7647 >4	0	---	---
Oil Cleanliness	ISO 4406 (c) >20/18/15	▲ 23/20/13	---	---

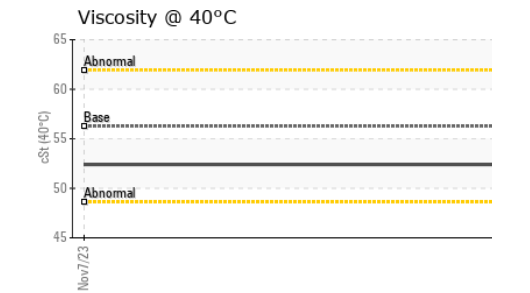
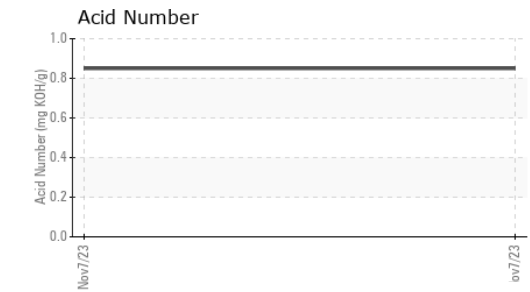
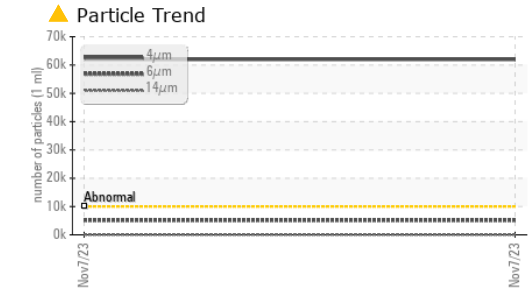
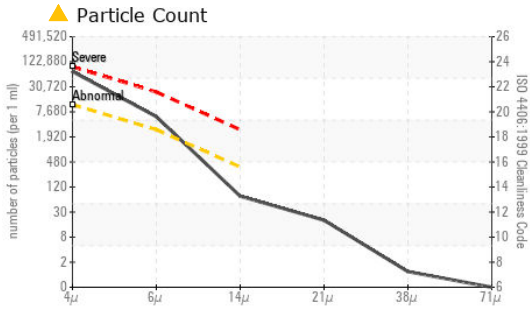
FLUID DEGRADATION

method	limit/base	current	history1	history2
Acid Number (AN)	mg KOH/g ASTM D8045	0.85	---	---





OIL ANALYSIS REPORT



Certificate L2367

Laboratory : WearCheck USA - 501 Madison Ave., Cary, NC 27513
Sample No. : PH06008298 **Received** : 15 Nov 2023
Lab Number : 06008298 **Diagnosed** : 30 Nov 2023
Unique Number : 10742060 **Diagnostician** : Jonathan Hester
Test Package : PLANT (Additional Tests: PrtFilter)

To discuss this sample report, contact Customer Service at 1-800-237-1369.

* - Denotes test methods that are outside of the ISO 17025 scope of accreditation.

Statements of conformity to specifications are based on the simple acceptance decision rule (JCGM 106:2012)

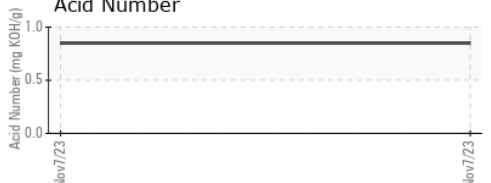
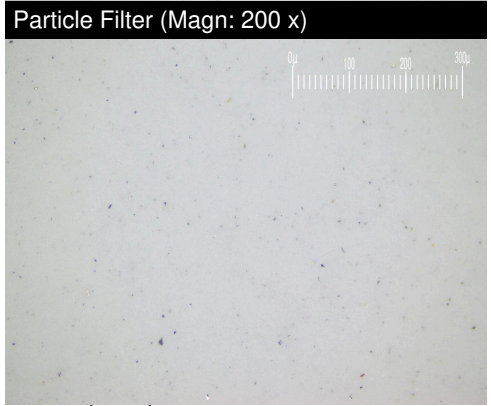
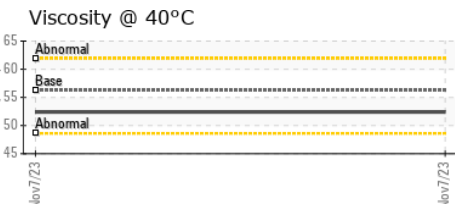
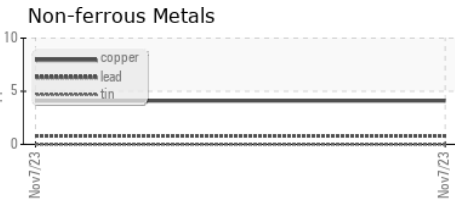
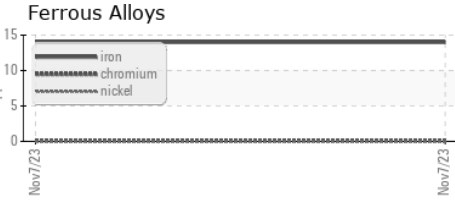
VISUAL	method	limit/base	current	history1	history2	
White Metal	scalar	*Visual	NONE	NONE	---	---
Yellow Metal	scalar	*Visual	NONE	NONE	---	---
Precipitate	scalar	*Visual	NONE	NONE	---	---
Silt	scalar	*Visual	NONE	NONE	---	---
Debris	scalar	*Visual	NONE	LIGHT	---	---
Sand/Dirt	scalar	*Visual	NONE	NONE	---	---
Appearance	scalar	*Visual	NORML	NORML	---	---
Odor	scalar	*Visual	NORML	NORML	---	---
Emulsified Water	scalar	*Visual	>0.1	NEG	---	---
Free Water	scalar	*Visual		NEG	---	---

FLUID PROPERTIES	method	limit/base	current	history1	history2	
Visc @ 40°C	cSt	ASTM D445	56.26	52.4	---	---

SAMPLE IMAGES	method	limit/base	current	history1	history2
---------------	--------	------------	---------	----------	----------

Color				no image	no image
Bottom				no image	no image
PrtFilter				no image	no image

GRAPHS



BRIGGS EQUIPMENT
 2230 US-301
 TAMPA, FL
 US 33619
 Contact: JOHN LAWLAN
 john.lawlan@briggsequipment.com
 T: (813)403-2790
 F: