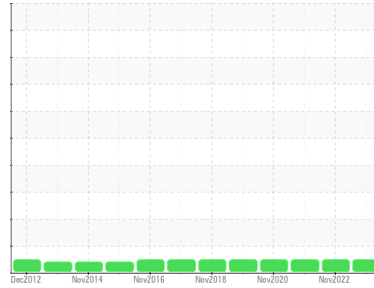




# OIL ANALYSIS REPORT

Sample Rating Trend

**NORMAL**



Area  
**[603703429 SDR]**  
 Machine Id  
**L-3 ENROBER WIRE BELT (S/N 20065770)**  
 Component  
**Gearbox**  
 Fluid  
**GEAR OIL ISO 220 (--- GAL)**

## DIAGNOSIS

### Recommendation

Resample at the next service interval to monitor.

### Wear

All component wear rates are normal.

### Contamination

There is no indication of any contamination in the oil.

### Fluid Condition

The AN level is acceptable for this fluid. The condition of the oil is suitable for further service.

## SAMPLE INFORMATION

	method	limit/base	current	history1	history2
Sample Number	Client Info		<b>WC0562367</b>	WC0562109	WC0562393
Sample Date	Client Info		<b>12 Nov 2023</b>	25 Nov 2022	07 Nov 2021
Machine Age	mls	Client Info	<b>0</b>	0	0
Oil Age	mls	Client Info	<b>0</b>	0	0
Oil Changed	Client Info		<b>Changed</b>	Changed	Changed
Sample Status			<b>NORMAL</b>	NORMAL	NORMAL

## WEAR METALS

	method	limit/base	current	history1	history2	
Iron	ppm	ASTM D5185m	>200	<b>0</b>	5	<1
Chromium	ppm	ASTM D5185m	>15	<b>0</b>	<1	0
Nickel	ppm	ASTM D5185m	>15	<b>0</b>	0	0
Titanium	ppm	ASTM D5185m		<b>0</b>	0	0
Silver	ppm	ASTM D5185m		<b>0</b>	0	0
Aluminum	ppm	ASTM D5185m	>25	<b>&lt;1</b>	1	0
Lead	ppm	ASTM D5185m	>100	<b>0</b>	0	0
Copper	ppm	ASTM D5185m	>200	<b>0</b>	<1	0
Tin	ppm	ASTM D5185m	>25	<b>0</b>	0	0
Antimony	ppm	ASTM D5185m	>5	<b>---</b>	---	0
Vanadium	ppm	ASTM D5185m		<b>0</b>	0	0
Cadmium	ppm	ASTM D5185m		<b>0</b>	0	0

## ADDITIVES

	method	limit/base	current	history1	history2	
Boron	ppm	ASTM D5185m	50	<b>0</b>	0	0
Barium	ppm	ASTM D5185m	15	<b>0</b>	0	0
Molybdenum	ppm	ASTM D5185m	15	<b>0</b>	0	0
Manganese	ppm	ASTM D5185m		<b>0</b>	0	0
Magnesium	ppm	ASTM D5185m	50	<b>&lt;1</b>	0	0
Calcium	ppm	ASTM D5185m	50	<b>4</b>	7	0
Phosphorus	ppm	ASTM D5185m	350	<b>127</b>	169	194
Zinc	ppm	ASTM D5185m	100	<b>0</b>	<1	0
Sulfur	ppm	ASTM D5185m	12500	<b>2003</b>	2427	1650

## CONTAMINANTS

	method	limit/base	current	history1	history2	
Silicon	ppm	ASTM D5185m	>50	<b>2</b>	9	0
Sodium	ppm	ASTM D5185m		<b>0</b>	<1	0
Potassium	ppm	ASTM D5185m	>20	<b>0</b>	0	0

## FLUID DEGRADATION

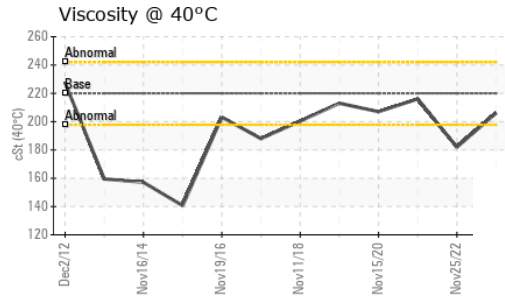
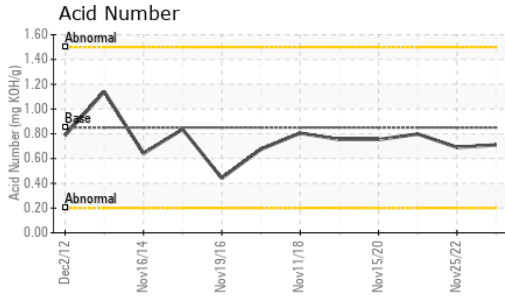
	method	limit/base	current	history1	history2	
Acid Number (AN)	mg KOH/g	ASTM D8045	0.85	<b>0.71</b>	0.69	0.798

## VISUAL

	method	limit/base	current	history1	history2	
White Metal	scalar	*Visual	NONE	<b>NONE</b>	NONE	NONE
Yellow Metal	scalar	*Visual	NONE	<b>NONE</b>	NONE	NONE
Precipitate	scalar	*Visual	NONE	<b>NONE</b>	NONE	NONE
Silt	scalar	*Visual	NONE	<b>NONE</b>	NONE	NONE
Debris	scalar	*Visual	NONE	<b>NONE</b>	NONE	NONE
Sand/Dirt	scalar	*Visual	NONE	<b>NONE</b>	NONE	NONE
Appearance	scalar	*Visual	NORML	<b>NORML</b>	NORML	NORML
Odor	scalar	*Visual	NORML	<b>NORML</b>	NORML	NORML
Emulsified Water	scalar	*Visual	>0.2	<b>NEG</b>	NEG	NEG
Free Water	scalar	*Visual		<b>NEG</b>	NEG	NEG



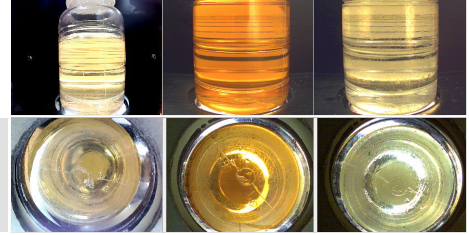
# OIL ANALYSIS REPORT



FLUID PROPERTIES	method	limit/base	current	history1	history2
Visc @ 40°C	cSt	ASTM D445	220	206	182

SAMPLE IMAGES	method	limit/base	current	history1	history2
---------------	--------	------------	---------	----------	----------

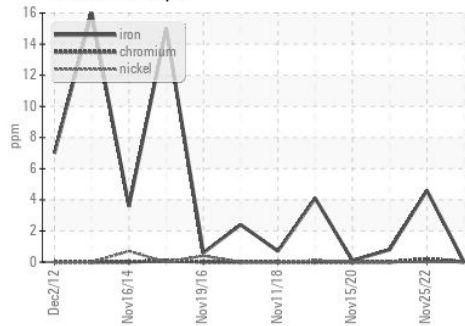
Color



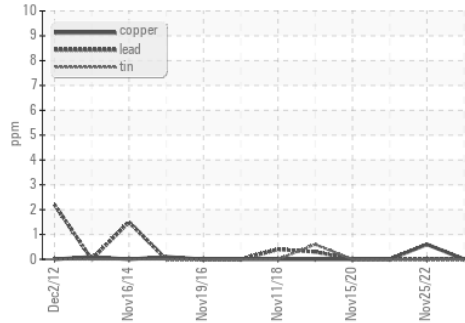
Bottom

## GRAPHS

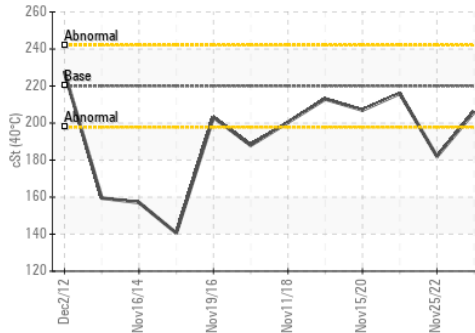
### Ferrous Alloys



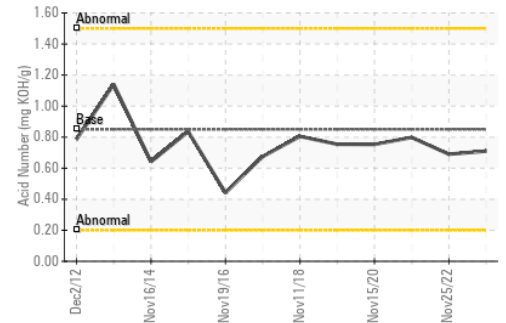
### Non-ferrous Metals



### Viscosity @ 40°C



### Acid Number



Certificate L2367

**Laboratory** : WearCheck USA - 501 Madison Ave., Cary, NC 27513  
**Sample No.** : WC0562367  
**Lab Number** : 06008503  
**Unique Number** : 10742265  
**Test Package** : IND 2  
**Received** : 15 Nov 2023  
**Diagnosed** : 17 Nov 2023  
**Diagnostician** : Don Baldrige

**MARS CHOCOLATE**  
 2019 NORTH OAK PARK  
 CHICAGO, IL  
 US 60707  
 Contact: TONY FIORE  
 tony.fiore@effem.com  
 T: (773)745-2279  
 F:

To discuss this sample report, contact Customer Service at 1-800-237-1369.

\* - Denotes test methods that are outside of the ISO 17025 scope of accreditation.

Statements of conformity to specifications are based on the simple acceptance decision rule (JCGM 106:2012)