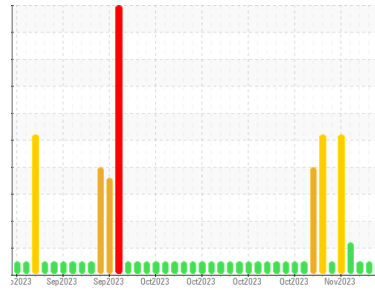




# COOLANT REPORT

Sample Rating Trend



**NORMAL**



Area  
**WCLSNC**  
 Machine Id  
**QC COOL ELC NC 09012022**

Component  
**Coolant**  
 Fluid  
**CAT EXTENDED LIFE COOLANT (ELC) (--- GAL)**

## DIAGNOSIS

### Recommendation

No corrective action is recommended at this time. The fluid is suitable for further service.

### Corrosion

All metal levels are normal indicating no corrosion in the cooling system.

### Contaminants

There is no indication of any contamination in the coolant.

### Coolant Condition

Carboxylate test failed. Glycol and nitrite levels are acceptable. The pH level of this fluid is within the acceptable limits.

## SAMPLE INFORMATION

method	limit/base	current	history1	history2
Sample Number	Client Info	<b>WC0877740</b>	WC0877738	WC0877735
Sample Date	Client Info	<b>15 Nov 2023</b>	13 Nov 2023	10 Nov 2023
Machine Age	hrs	Client Info	<b>0</b>	0
Oil Age	hrs	Client Info	<b>0</b>	0
Oil Changed	Client Info	<b>N/A</b>	N/A	N/A
Sample Status		<b>NORMAL</b>	NORMAL	NORMAL

## PHYSICAL TEST RESULTS

method	limit/base	current	history1	history2
Specific Gravity	*ASTM D1298	<b>1.067</b>	1.067	1.067
pH	Scale 0-14 ASTM D1287	<b>8.14</b>	8.23	8.28
Nitrites	ppm AP-053:2009	<b>712</b>	712	712
Reserve Alkalinity	Scale 0-20 *ASTM D1121	<b>---</b>	---	---
Percentage Glycol	% ASTM D3321	<b>49.5</b>	49.5	49.5
Freezing Point	°F ASTM D3321	<b>-33</b>	-33	-33
Total Dissolved Solids		<b>385.5</b>	362.5	314.5
Carboxylate		<b>fail</b>	pass	fail

## CORROSION INHIBITORS

method	limit/base	current	history1	history2
Silicon	ppm ASTM D6130	0	<b>0</b>	0
Phosphorus	ppm ASTM D6130	0	<b>2</b>	<1
Boron	ppm ASTM D6130	0	<b>0</b>	0
Molybdenum	ppm ASTM D6130	950	<b>108</b>	662

## CORROSION

method	limit/base	current	history1	history2
Iron	ppm ASTM D6130	>2	<b>0</b>	0
Aluminum	ppm ASTM D6130	>2	<b>&lt;1</b>	0
Copper	ppm ASTM D6130	>2	<b>&lt;1</b>	<1
Lead	ppm ASTM D6130	>2	<b>&lt;1</b>	<1
Tin	ppm ASTM D6130	>2	<b>1</b>	2
Zinc	ppm ASTM D6130	>2	<b>1</b>	0

## CONTAMINANTS

method	limit/base	current	history1	history2
Chlorine	ppm ASTM D6130		<b>7</b>	7

## CARRIER SALTS

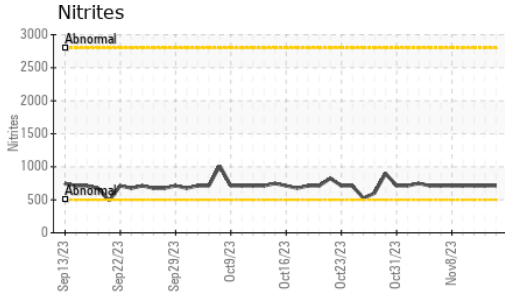
method	limit/base	current	history1	history2
Sodium	ppm ASTM D6130		<b>571</b>	3714
Potassium	ppm ASTM D6130		<b>&lt;1</b>	1

## SCALE POTENTIAL

method	limit/base	current	history1	history2
Calcium	ppm ASTM D6130	>5	<b>2</b>	2
Magnesium	ppm ASTM D6130	>6	<b>1</b>	1

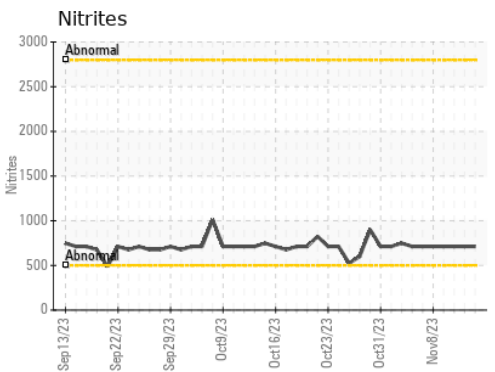
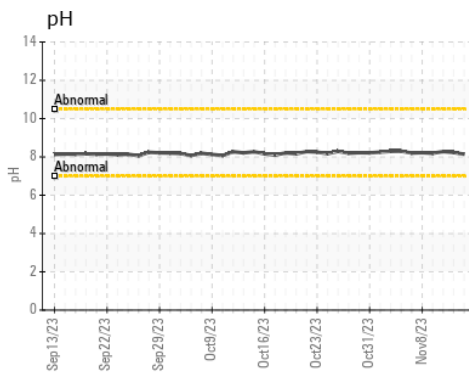
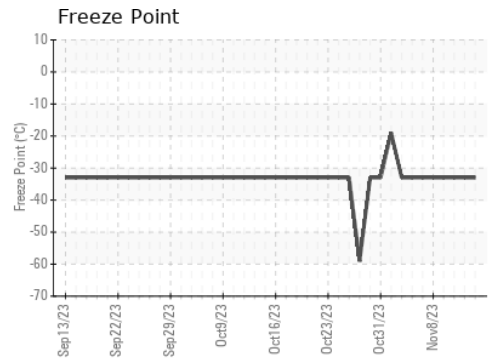
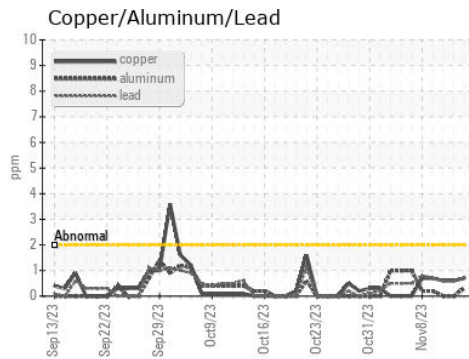
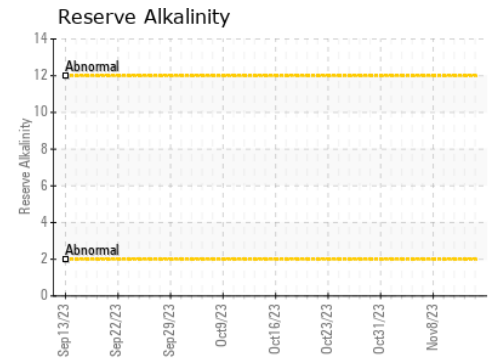
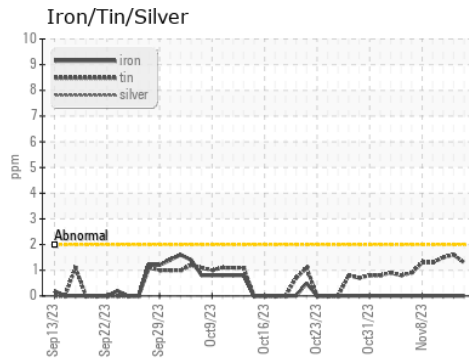


# COOLANT REPORT



VISUAL	method	limit/base	current	history1	history2
Coolant Color	*Visual		Red	Red	Red
Coolant Appearance	*Visual	Clear	normal	normal	normal
Color					
Bottom					

## GRAPHS



Certificate L2367

**Laboratory** : WearCheck USA - 501 Madison Ave., Cary, NC 27513  
**Sample No.** : WC0877740 **Received** : 15 Nov 2023  
**Lab Number** : 06008774 **Diagnosed** : 05 Dec 2023  
**Unique Number** : 10742536 **Diagnostician** : Doug Bogart  
**Test Package** : COOL- ( Additional Tests: COOL, ICP )

**WEARCHECK LUBRICATION SERVICES QA ACCOUNT**  
 501 Madison Ave  
 Cary, NC  
 US 27513  
 Contact: WCLS CARY NC

To discuss this sample report, contact Customer Service at 1-800-237-1369.

\* - Denotes test methods that are outside of the ISO 17025 scope of accreditation.

Statements of conformity to specifications are based on the simple acceptance decision rule (JCGM 106:2012)

T: (919)379-4102  
 F: (919)379-4050