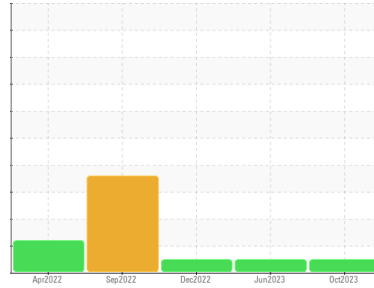




OIL ANALYSIS REPORT

Sample Rating Trend



NORMAL



Area
CS-46 [CAC2671561]
 Machine Id
QUINCY UTY305984 - CONTAINMENT SOLUTIONS
 Component
Compressor

DIAGNOSIS

Recommendation

Oil and filter change at the time of sampling has been noted. Resample at the next service interval to monitor.

Wear

All component wear rates are normal.

Contamination

There is no indication of any contamination in the oil.

Fluid Condition

The AN level is acceptable for this fluid. The condition of the oil is suitable for further service.

SAMPLE INFORMATION

| | method | limit/base | current | history1 | history2 |
|---------------|-------------|-------------|--------------------|-------------|-------------|
| Sample Number | Client Info | | UCH06009719 | UCH05893864 | UCH05791047 |
| Sample Date | Client Info | | 26 Oct 2023 | 26 Jun 2023 | 27 Dec 2022 |
| Machine Age | hrs | Client Info | 26524 | 25045 | 23406 |
| Oil Age | hrs | Client Info | 5724 | 2000 | 3000 |
| Oil Changed | Client Info | | Changed | Not Changd | Not Changd |
| Sample Status | | | NORMAL | NORMAL | NORMAL |

WEAR METALS

| | method | limit/base | current | history1 | history2 |
|----------|--------|-----------------|--------------|----------|----------|
| Iron | ppm | ASTM D5185m >50 | <1 | 1 | <1 |
| Chromium | ppm | ASTM D5185m >10 | 0 | 0 | 0 |
| Nickel | ppm | ASTM D5185m | 0 | 0 | <1 |
| Titanium | ppm | ASTM D5185m | 0 | <1 | 0 |
| Silver | ppm | ASTM D5185m | 0 | 0 | 0 |
| Aluminum | ppm | ASTM D5185m >25 | 7 | 2 | 2 |
| Lead | ppm | ASTM D5185m >25 | 0 | 0 | 0 |
| Copper | ppm | ASTM D5185m >50 | <1 | 0 | <1 |
| Tin | ppm | ASTM D5185m >15 | 0 | 0 | <1 |
| Vanadium | ppm | ASTM D5185m | 0 | 0 | 0 |
| Cadmium | ppm | ASTM D5185m | 0 | 0 | 0 |

ADDITIVES

| | method | limit/base | current | history1 | history2 |
|------------|--------|------------------|--------------|----------|----------|
| Boron | ppm | ASTM D5185m 1.5 | 0 | 0 | <1 |
| Barium | ppm | ASTM D5185m 0 | 22 | 0 | 0 |
| Molybdenum | ppm | ASTM D5185m 0 | 0 | 0 | 0 |
| Manganese | ppm | ASTM D5185m 0.3 | 0 | 0 | 0 |
| Magnesium | ppm | ASTM D5185m 0 | 0 | 4 | 0 |
| Calcium | ppm | ASTM D5185m 0 | 0 | 0 | 0 |
| Phosphorus | ppm | ASTM D5185m 406 | 72 | 90 | 124 |
| Zinc | ppm | ASTM D5185m 0 | <1 | 6 | 0 |
| Sulfur | ppm | ASTM D5185m 1283 | 153 | 246 | 330 |

CONTAMINANTS

| | method | limit/base | current | history1 | history2 |
|-----------|--------|-----------------|--------------|----------|----------|
| Silicon | ppm | ASTM D5185m >25 | <1 | <1 | <1 |
| Sodium | ppm | ASTM D5185m | 3 | 1 | 0 |
| Potassium | ppm | ASTM D5185m >20 | 0 | 0 | 1 |

FLUID DEGRADATION

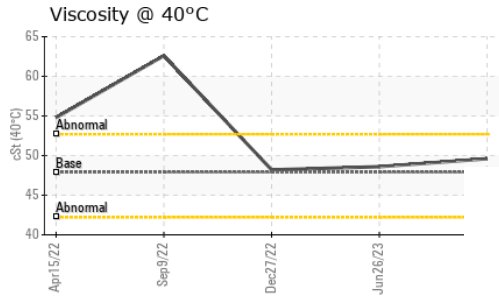
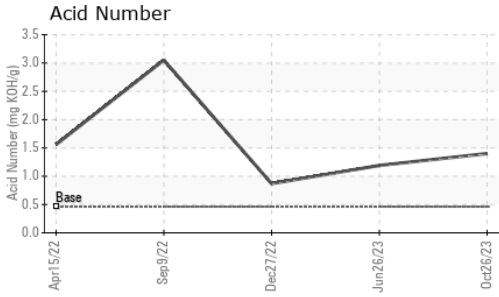
| | method | limit/base | current | history1 | history2 |
|------------------|----------|------------------|-------------|----------|----------|
| Acid Number (AN) | mg KOH/g | ASTM D8045 0.463 | 1.40 | 1.19 | 0.87 |

VISUAL

| | method | limit/base | current | history1 | history2 |
|------------------|--------|---------------|--------------|----------|----------|
| White Metal | scalar | *Visual NONE | LIGHT | NONE | LIGHT |
| Yellow Metal | scalar | *Visual NONE | NONE | NONE | NONE |
| Precipitate | scalar | *Visual NONE | NONE | NONE | NONE |
| Silt | scalar | *Visual NONE | NONE | NONE | NONE |
| Debris | scalar | *Visual NONE | NONE | NONE | MODER |
| Sand/Dirt | scalar | *Visual NONE | NONE | NONE | NONE |
| Appearance | scalar | *Visual NORML | NORML | NORML | NORML |
| Odor | scalar | *Visual NORML | NORML | NORML | NORML |
| Emulsified Water | scalar | *Visual >0.1 | NEG | NEG | NEG |
| Free Water | scalar | *Visual | NEG | NEG | NEG |



OIL ANALYSIS REPORT



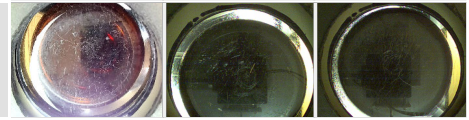
| FLUID PROPERTIES | method | limit/base | current | history1 | history2 |
|------------------|--------|------------|---------|----------|----------|
| Visc @ 40°C | cSt | ASTM D445 | 47.9 | 49.6 | 48.6 |

| SAMPLE IMAGES | method | limit/base | current | history1 | history2 |
|---------------|--------|------------|---------|----------|----------|
|---------------|--------|------------|---------|----------|----------|

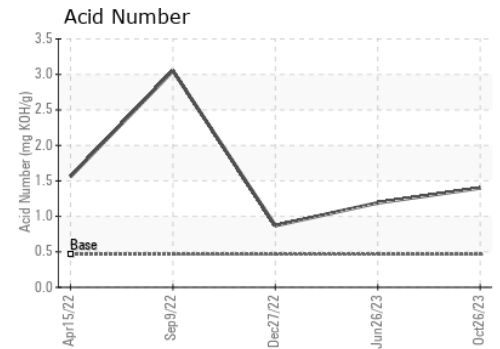
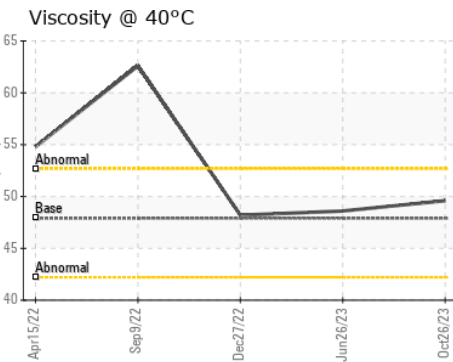
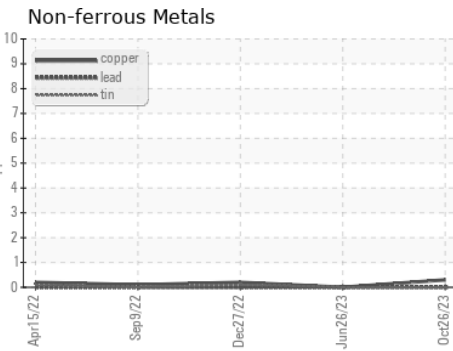
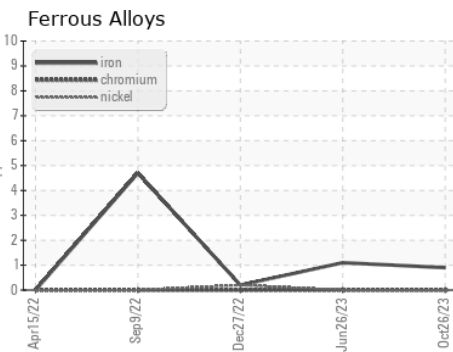
Color



Bottom



GRAPHS



Certificate L2367

Laboratory : WearCheck USA - 501 Madison Ave., Cary, NC 27513
 Sample No. : UCH06009719 Received : 16 Nov 2023
 Lab Number : 06009719 Diagnosed : 17 Nov 2023
 Unique Number : 10743481 Diagnostician : Doug Bogart
 Test Package : IND 2

To discuss this sample report, contact Customer Service at 1-800-237-1369.

* - Denotes test methods that are outside of the ISO 17025 scope of accreditation.

Statements of conformity to specifications are based on the simple acceptance decision rule (JCGM 106:2012)

CISCO AIR SYSTEMS
 214 27TH ST
 SACRAMENTO, CA
 US 95816

Contact: BARRY FRKOVICH
 barryfrkovich@ciscoair.com

T: (916)444-2525

F: x: