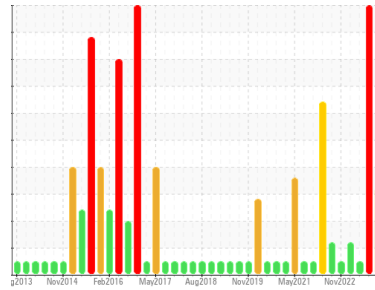


PROBLEM SUMMARY

Sample Rating Trend



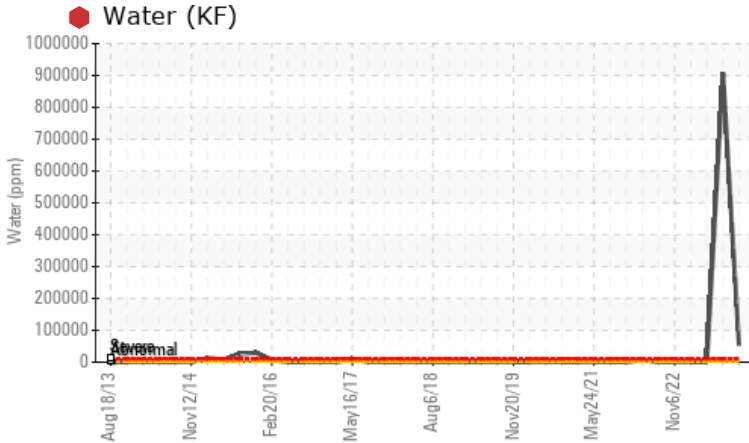
WATER



Area
TM 6
Machine Id
YANKEE GRBX

Component
Gearbox
Fluid
GEAR OIL LS 80W90 (--- GAL)

COMPONENT CONDITION SUMMARY



RECOMMENDATION

We advise that you check for the source of water entry. We recommend that you drain the oil from the component if this has not already been done. We recommend an early resample to monitor this condition. There is too much water present in this sample to perform a particle count.

PROBLEMATIC TEST RESULTS

Sample Status				SEVERE	SEVERE	NORMAL
Water	%	ASTM D6304	>0.2	🔴 5.48	🔴 90.6	0.007
ppm Water	ppm	ASTM D6304	>2000	🔴 54800	🔴 906000	73.7
Emulsified Water	scalar	*Visual	>0.2	🔴 0.2%	🔴 0.2%	NEG

Customer Id: KIMMOBTM6
Sample No.: RP0030562
Lab Number: 06010756
Test Package: IND 2



To manage this report scan the QR code

To discuss the diagnosis or test data:
Don Baldrige +1
don.b505@comcast.net

To change component or sample information:
Customer Service +1 1-800-237-1369
customerservice@wearcheck.com

RECOMMENDED ACTIONS

Action	Status	Date	Done By	Description
Change Fluid	---	---	?	We recommend that you drain the oil from the component if this has not already been done.
Resample	---	---	?	We recommend an early resample to monitor this condition.
Check Water Access	---	---	?	We advise that you check for the source of water entry.

HISTORICAL DIAGNOSIS

09 Aug 2023 Diag: Doug Bogart

WEAR



We advise that you check for the source of water entry. We advise that you inspect for the source(s) of wear. We recommend an early resample to monitor this condition. Please note that the oil was too thick to perform some of the normal laboratory tests. The very high ferrous density (PQ) index indicates that severe wear is occurring. There is a high concentration of water present in the oil. The oil is no longer serviceable.

view report



24 May 2023 Diag: Don Baldrige

NORMAL



Resample at the next service interval to monitor. All component wear rates are normal. There is no indication of any contamination in the oil. The amount and size of particulates present in the system are acceptable. The AN level is acceptable for this fluid. The condition of the oil is suitable for further service.

view report



21 Feb 2023 Diag: Don Baldrige

ISO



No corrective action is recommended at this time. Resample at the next service interval to monitor. All component wear rates are normal. There is a moderate amount of particulates present in the oil. The AN level is acceptable for this fluid. The condition of the oil is suitable for further service.

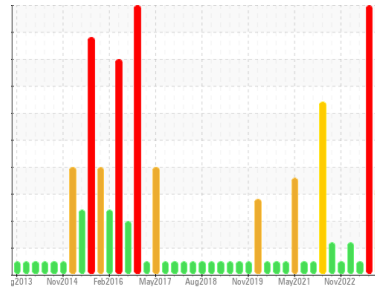
view report





OIL ANALYSIS REPORT

Sample Rating Trend



WATER



Area
TM 6
Machine Id
YANKEE GRBX

Component
Gearbox
Fluid
GEAR OIL LS 80W90 (--- GAL)

DIAGNOSIS

Recommendation

We advise that you check for the source of water entry. We recommend that you drain the oil from the component if this has not already been done. We recommend an early resample to monitor this condition. There is too much water present in this sample to perform a particle count.

Wear

All component wear rates are normal.

Contamination

There is a high concentration of water present in the oil.

Fluid Condition

The AN level is acceptable for this fluid. The oil is no longer serviceable due to the presence of contaminants.

SAMPLE INFORMATION

	method	limit/base	current	history1	history2
Sample Number	Client Info		RP0030562	RP0034418	RP0023571
Sample Date	Client Info		17 Nov 2023	09 Aug 2023	24 May 2023
Machine Age	wks	Client Info	0	0	0
Oil Age	wks	Client Info	0	0	0
Oil Changed	Client Info		N/A	N/A	N/A
Sample Status			SEVERE	SEVERE	NORMAL

WEAR METALS

	method	limit/base	current	history1	history2
PQ	ASTM D8184		55	21003	18
Iron	ppm	ASTM D5185m >200	43	11	3
Chromium	ppm	ASTM D5185m >15	1	0	0
Nickel	ppm	ASTM D5185m >15	<1	0	0
Titanium	ppm	ASTM D5185m	<1	0	0
Silver	ppm	ASTM D5185m	0	0	0
Aluminum	ppm	ASTM D5185m >25	1	<1	<1
Lead	ppm	ASTM D5185m >100	<1	0	0
Copper	ppm	ASTM D5185m >200	7	<1	2
Tin	ppm	ASTM D5185m >25	3	0	0
Vanadium	ppm	ASTM D5185m	<1	<1	0
Cadmium	ppm	ASTM D5185m	0	<1	0

ADDITIVES

	method	limit/base	current	history1	history2
Boron	ppm	ASTM D5185m 150	3	0	0
Barium	ppm	ASTM D5185m	0	0	0
Molybdenum	ppm	ASTM D5185m	<1	0	<1
Manganese	ppm	ASTM D5185m	<1	<1	<1
Magnesium	ppm	ASTM D5185m 10	0	<1	2
Calcium	ppm	ASTM D5185m 70	81	0	40
Phosphorus	ppm	ASTM D5185m 2000	371	13	468
Zinc	ppm	ASTM D5185m 50	566	4	689

CONTAMINANTS

	method	limit/base	current	history1	history2
Silicon	ppm	ASTM D5185m >50	8	<1	1
Sodium	ppm	ASTM D5185m	3	0	1
Potassium	ppm	ASTM D5185m >20	2	2	0
Water	%	ASTM D6304 >0.2	5.48	90.6	0.007
ppm Water	ppm	ASTM D6304 >2000	54800	906000	73.7

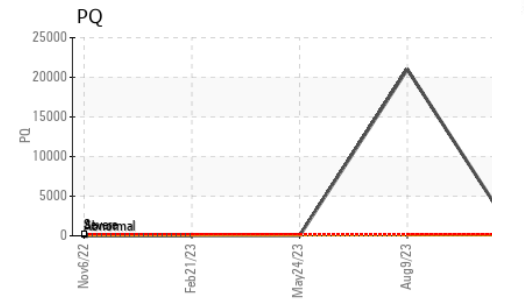
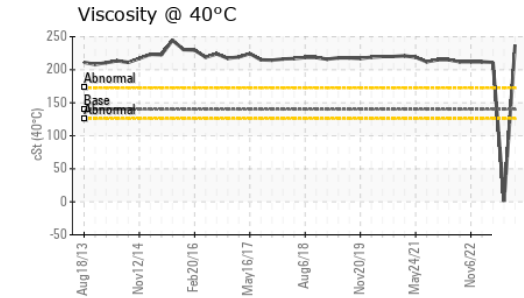
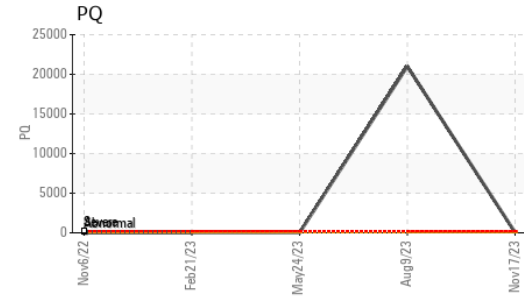
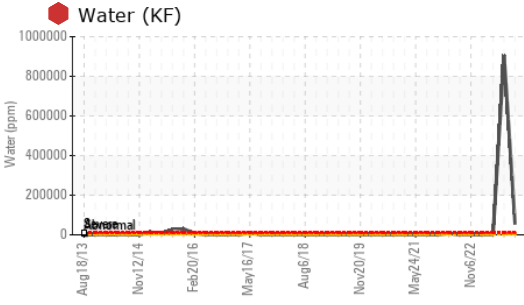
FLUID CLEANLINESS

	method	limit/base	current	history1	history2
Particles >4µm	ASTM D7647	>20000	---	---	5518
Particles >6µm	ASTM D7647	>5000	---	---	1012
Particles >14µm	ASTM D7647	>640	---	---	150
Particles >21µm	ASTM D7647	>160	---	---	37
Particles >38µm	ASTM D7647	>40	---	---	2
Particles >71µm	ASTM D7647	>10	---	---	0
Oil Cleanliness	ISO 4406 (c)	>21/19/16	---	---	20/17/14

FLUID DEGRADATION

	method	limit/base	current	history1	history2
Acid Number (AN)	mg KOH/g	ASTM D8045	0.48	2.78	0.51

OIL ANALYSIS REPORT



Certificate L2367

Laboratory : WearCheck USA - 501 Madison Ave., Cary, NC 27513
Sample No. : RP0030562 **Received** : 17 Nov 2023
Lab Number : 06010756 **Diagnosed** : 22 Nov 2023
Unique Number : 10749900 **Diagnostician** : Don Baldrige
Test Package : IND 2 (Additional Tests: PQ, PrtCount)

To discuss this sample report, contact Customer Service at 1-800-237-1369.

* - Denotes test methods that are outside of the ISO 17025 scope of accreditation.

Statements of conformity to specifications are based on the simple acceptance decision rule (JCGM 106:2012)

Kimberly-Clark - Mobile - TM 6
 200 BAYBRIDGE RD
 MOBILE, AL
 US 36610

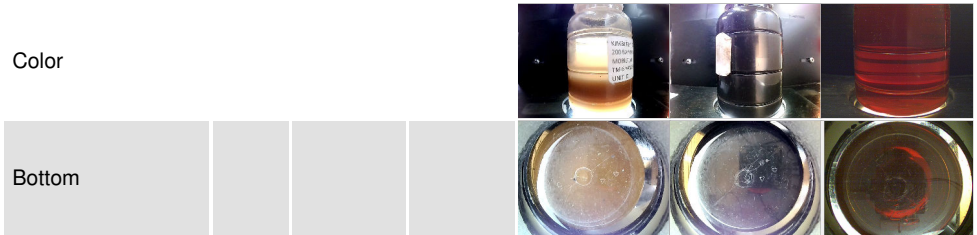
Contact: MORGAN RUSSELL
 Morgan.Russell@kcc.com

T:
 F: (251)452-6335

VISUAL	method	limit/base	current	history1	history2
White Metal	scalar	*Visual	NONE	NONE	NONE
Yellow Metal	scalar	*Visual	NONE	NONE	NONE
Precipitate	scalar	*Visual	NONE	NONE	NONE
Silt	scalar	*Visual	NONE	NONE	NONE
Debris	scalar	*Visual	NONE	NONE	LIGHT
Sand/Dirt	scalar	*Visual	NONE	NONE	NONE
Appearance	scalar	*Visual	NORML	NORML	NORML
Odor	scalar	*Visual	NORML	NORML	NORML
Emulsified Water	scalar	*Visual	>0.2	0.2%	NEG
Free Water	scalar	*Visual	NEG	NEG	NEG

FLUID PROPERTIES	method	limit/base	current	history1	history2
Visc @ 40°C	cSt	ASTM D445 140	237	0.8	211

SAMPLE IMAGES	method	limit/base	current	history1	history2
---------------	--------	------------	---------	----------	----------



GRAPHS

