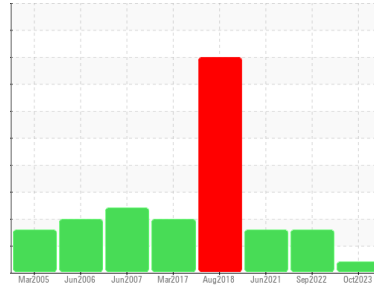




PROBLEM SUMMARY

Sample Rating Trend



VIS DEBRIS



Machine Id
KAESER SK19 1585057 (1088)

Component
Compressor

Fluid
KAESER SIGMA (OEM) S-460 (--- GAL)

COMPONENT CONDITION SUMMARY

No relevant graphs to display

RECOMMENDATION

We recommend you service the filters on this component. Resample at the next service interval to monitor. We were unable to perform a particle count due to a high concentration of particles present in this sample.

PROBLEMATIC TEST RESULTS

Sample Status				ABNORMAL	ABNORMAL	ABNORMAL
Debris	scalar	*Visual	NONE	▲ MODER	LIGHT	LIGHT

Customer Id: SENLOU
Sample No.: KCPA000508
Lab Number: 06012418
Test Package: IND 2



To manage this report scan the QR code

To discuss the diagnosis or test data:
Doug Bogart +1 (800)237-1369 x4016
dougb@wearcheckusa.com

To change component or sample information:
Customer Service +1 1-800-237-1369
customerservice@wearcheck.com

RECOMMENDED ACTIONS

Action	Status	Date	Done By	Description
Change Filter	---	---	?	We recommend you service the filters on this component.
Alert	---	---	?	We were unable to perform a particle count due to a high concentration of particles present in this sample.

HISTORICAL DIAGNOSIS

30 Sep 2022 Diag: Jonathan Hester

ISO



Oil and filter change at the time of sampling has been noted. Resample at the next service interval to monitor. All component wear rates are normal. There is a high amount of particulates present in the oil. The AN level is acceptable for this fluid. The condition of the oil is suitable for further service.

view report



10 Jun 2021 Diag: Angela Borella

ISO



Oil and filter change at the time of sampling has been noted. Resample at the next service interval to monitor. All component wear rates are normal. There is a high amount of particulates present in the oil. The AN level is acceptable for this fluid. The condition of the oil is suitable for further service.

view report



16 Aug 2018 Diag: Angela Borella

ISO



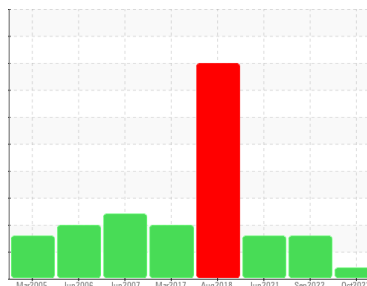
No corrective action is recommended at this time. Oil and filter change at the time of sampling has been noted. Resample at the next service interval to monitor. All component wear rates are normal. The amount and size of particulates present in the system are acceptable. The AN level is acceptable for this fluid. The condition of the oil is suitable for further service.

view report



OIL ANALYSIS REPORT

Sample Rating Trend



VIS DEBRIS



Machine Id
KAESER SK19 1585057 (1088)

Component
Compressor

Fluid
KAESER SIGMA (OEM) S-460 (--- GAL)

DIAGNOSIS

Recommendation

We recommend you service the filters on this component. Resample at the next service interval to monitor. We were unable to perform a particle count due to a high concentration of particles present in this sample.

Wear

All component wear rates are normal.

Contamination

Moderate concentration of visible dirt/debris present in the oil.

Fluid Condition

The AN level is acceptable for this fluid. The condition of the oil is suitable for further service.

SAMPLE INFORMATION		method	limit/base	current	history1	history2
Sample Number	Client Info			KCPA000508	KCP47021	KCP33656
Sample Date	Client Info			09 Oct 2023	30 Sep 2022	10 Jun 2021
Machine Age	hrs	Client Info		39684	37054	33667
Oil Age	hrs	Client Info		0	3379	2700
Oil Changed	Client Info			N/A	Changed	Changed
Sample Status				ABNORMAL	ABNORMAL	ABNORMAL

WEAR METALS		method	limit/base	current	history1	history2
Iron	ppm	ASTM D5185m	>50	0	0	0
Chromium	ppm	ASTM D5185m	>10	0	0	0
Nickel	ppm	ASTM D5185m	>3	0	0	0
Titanium	ppm	ASTM D5185m	>3	0	0	0
Silver	ppm	ASTM D5185m	>2	0	0	<1
Aluminum	ppm	ASTM D5185m	>10	0	0	0
Lead	ppm	ASTM D5185m	>10	0	0	0
Copper	ppm	ASTM D5185m	>50	7	10	<1
Tin	ppm	ASTM D5185m	>10	0	0	0
Antimony	ppm	ASTM D5185m		---	---	0
Vanadium	ppm	ASTM D5185m		<1	0	0
Cadmium	ppm	ASTM D5185m		0	0	0

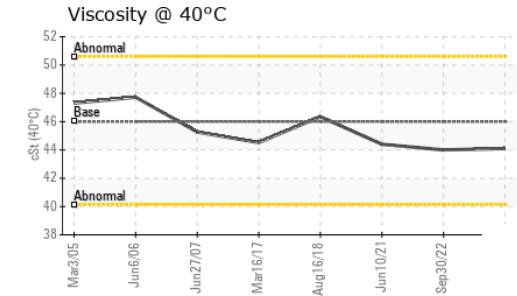
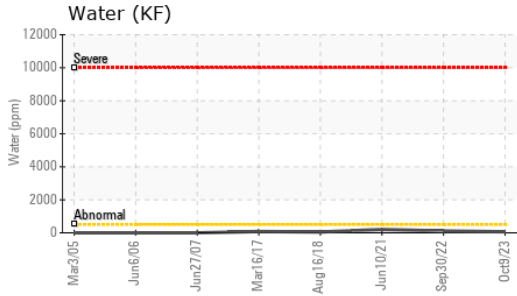
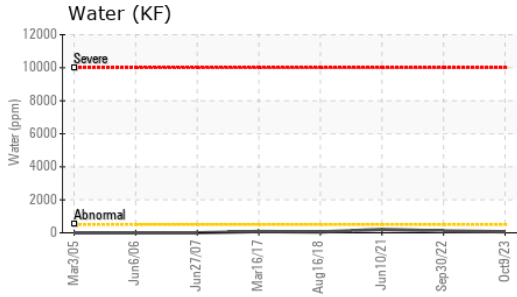
ADDITIVES		method	limit/base	current	history1	history2
Boron	ppm	ASTM D5185m		0	0	0
Barium	ppm	ASTM D5185m	90	0	0	0
Molybdenum	ppm	ASTM D5185m		0	0	0
Manganese	ppm	ASTM D5185m		<1	<1	0
Magnesium	ppm	ASTM D5185m	90	0	5	<1
Calcium	ppm	ASTM D5185m	2	0	0	0
Phosphorus	ppm	ASTM D5185m		0	2	8
Zinc	ppm	ASTM D5185m		25	35	0
Sulfur	ppm	ASTM D5185m		16080	19799	1974

CONTAMINANTS		method	limit/base	current	history1	history2
Silicon	ppm	ASTM D5185m	>25	0	0	<1
Sodium	ppm	ASTM D5185m		7	1	0
Potassium	ppm	ASTM D5185m	>20	0	0	0
Water	%	ASTM D6304	>0.05	0.006	0.011	0.020
ppm Water	ppm	ASTM D6304	>500	63.5	110.6	205.1

FLUID CLEANLINESS		method	limit/base	current	history1	history2
Particles >4µm		ASTM D7647		---	4186	9862
Particles >6µm		ASTM D7647	>1300	---	1113	▲ 3533
Particles >14µm		ASTM D7647	>80	---	▲ 171	▲ 514
Particles >21µm		ASTM D7647	>20	---	▲ 79	▲ 190
Particles >38µm		ASTM D7647	>4	---	▲ 9	▲ 7
Particles >71µm		ASTM D7647	>3	---	1	0
Oil Cleanliness		ISO 4406 (c)	>--/17/13	---	▲ 19/17/15	▲ 19/16

FLUID DEGRADATION		method	limit/base	current	history1	history2
Acid Number (AN)	mg KOH/g	ASTM D8045	0.4	0.34	0.34	0.307

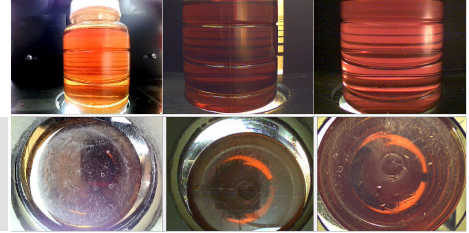
OIL ANALYSIS REPORT



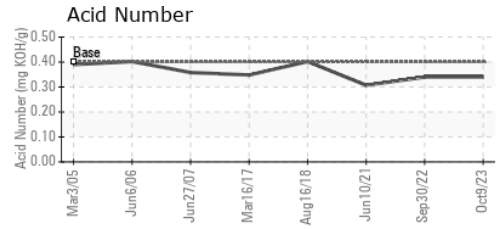
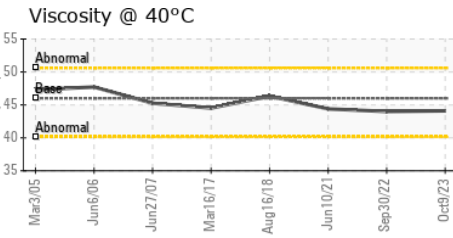
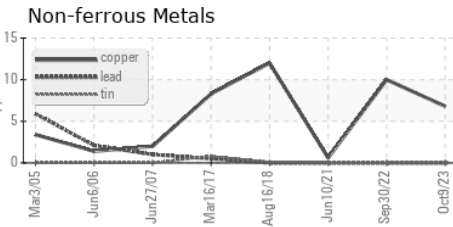
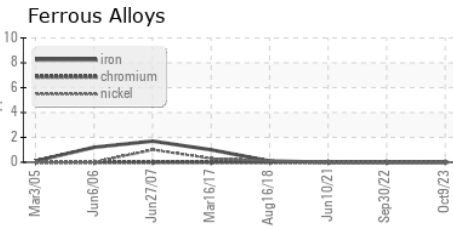
VISUAL	method	limit/base	current	history1	history2
White Metal	scalar	*Visual	NONE	NONE	NONE
Yellow Metal	scalar	*Visual	NONE	NONE	NONE
Precipitate	scalar	*Visual	NONE	NONE	NONE
Silt	scalar	*Visual	NONE	NONE	NONE
Debris	scalar	*Visual	▲ MODER	LIGHT	LIGHT
Sand/Dirt	scalar	*Visual	NONE	NONE	NONE
Appearance	scalar	*Visual	NORML	NORML	NORML
Odor	scalar	*Visual	NORML	NORML	NORML
Emulsified Water	scalar	*Visual	>0.05	NEG	NEG
Free Water	scalar	*Visual		NEG	NEG

FLUID PROPERTIES	method	limit/base	current	history1	history2
Visc @ 40°C	cSt	ASTM D445 46	44.1	44.0	44.4

SAMPLE IMAGES	method	limit/base	current	history1	history2
Color					
Bottom					



GRAPHS



Laboratory : WearCheck USA - 501 Madison Ave., Cary, NC 27513
Sample No. : KCPA000508 **Received** : 20 Nov 2023
Lab Number : 06012418 **Diagnosed** : 21 Nov 2023
Unique Number : 10751562 **Diagnostician** : Doug Bogart
Test Package : IND 2 (Additional Tests: KF, PrtCount)

SENNS BODYSHOP
 13010 MIDDLETON INDUSTRIAL BLVD.
 LOUISVILLE, KY
 US 40223
 Contact: SERVICE MANAGER

To discuss this sample report, contact Customer Service at 1-800-237-1369.
 * - Denotes test methods that are outside of the ISO 17025 scope of accreditation.
 Statements of conformity to specifications are based on the simple acceptance decision rule (JCGM 106:2012)

T:
F: