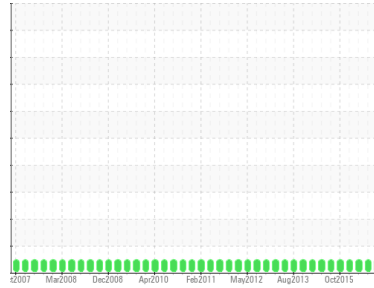




# OIL ANALYSIS REPORT

Sample Rating Trend

**NORMAL**



Machine Id  
**WP12 TF01 (S/N 31010101)**

Component  
**Gearbox**

Fluid  
**SHELL TELLUS 46 (46 GAL)**

## DIAGNOSIS

### Recommendation

Resample at the next service interval to monitor.

### Wear

All component wear rates are normal.

### Contamination

There is no indication of any contamination in the oil.

### Fluid Condition

The AN level is acceptable for this fluid. The condition of the oil is suitable for further service.

SAMPLE INFORMATION		method	limit/base	current	history1	history2
Sample Number	Client Info			<b>WC0776134</b>	WCI2288386	WCI2282201
Sample Date	Client Info			<b>14 Nov 2023</b>	16 Jun 2016	18 May 2016
Machine Age	yrs	Client Info		<b>20</b>	0	0
Oil Age	yrs	Client Info		<b>0</b>	0	0
Oil Changed	Client Info			<b>Not Changed</b>	Not Changed	Not Changed
Sample Status				<b>NORMAL</b>	NORMAL	NORMAL

CONTAMINATION		method	limit/base	current	history1	history2
Water	WC Method		>0.2	<b>NEG</b>	NEG	NEG

WEAR METALS		method	limit/base	current	history1	history2
Iron	ppm	ASTM D5185m	>200	<b>0</b>	<1	<1
Chromium	ppm	ASTM D5185m	>15	<b>0</b>	0	0
Nickel	ppm	ASTM D5185m	>15	<b>0</b>	0	<1
Titanium	ppm	ASTM D5185m		<b>0</b>	0	0
Silver	ppm	ASTM D5185m		<b>0</b>	0	<1
Aluminum	ppm	ASTM D5185m	>25	<b>0</b>	<1	0
Lead	ppm	ASTM D5185m	>100	<b>0</b>	<1	<1
Copper	ppm	ASTM D5185m	>200	<b>0</b>	<1	<1
Tin	ppm	ASTM D5185m	>25	<b>0</b>	0	1
Antimony	ppm	ASTM D5185m	>5	<b>---</b>	0	0
Vanadium	ppm	ASTM D5185m		<b>0</b>	0	0
Cadmium	ppm	ASTM D5185m		<b>0</b>	0	0

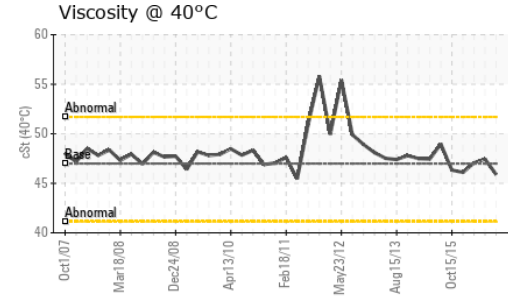
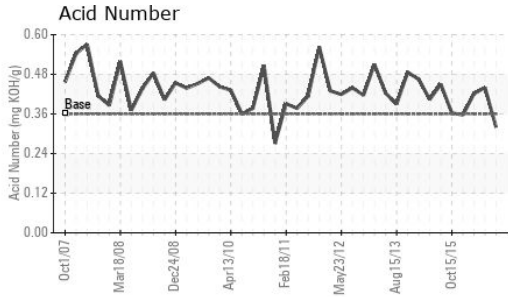
ADDITIVES		method	limit/base	current	history1	history2
Boron	ppm	ASTM D5185m	0.0	<b>0</b>	0	<1
Barium	ppm	ASTM D5185m	0	<b>0</b>	0	1
Molybdenum	ppm	ASTM D5185m	0	<b>0</b>	0	0
Manganese	ppm	ASTM D5185m		<b>&lt;1</b>	0	<1
Magnesium	ppm	ASTM D5185m	11	<b>69</b>	20	17
Calcium	ppm	ASTM D5185m	35	<b>19</b>	64	53
Phosphorus	ppm	ASTM D5185m	266	<b>288</b>	262	217
Zinc	ppm	ASTM D5185m	276	<b>361</b>	316	266
Sulfur	ppm	ASTM D5185m	1847	<b>773</b>	2258	1878

CONTAMINANTS		method	limit/base	current	history1	history2
Silicon	ppm	ASTM D5185m	>50	<b>&lt;1</b>	<1	<1
Sodium	ppm	ASTM D5185m		<b>&lt;1</b>	0	3
Potassium	ppm	ASTM D5185m	>20	<b>1</b>	0	2

FLUID DEGRADATION		method	limit/base	current	history1	history2
Acid Number (AN)	mg KOH/g	ASTM D8045	0.36	<b>0.32</b>	0.440	0.421



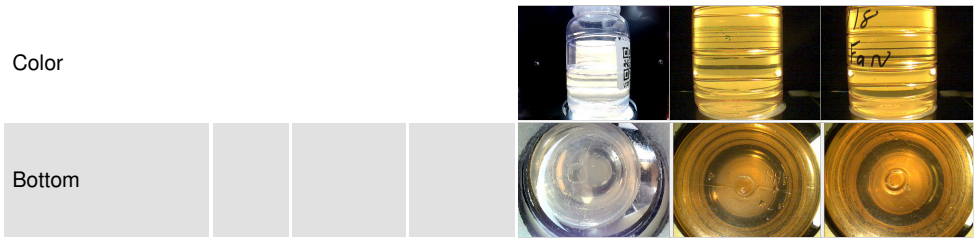
# OIL ANALYSIS REPORT



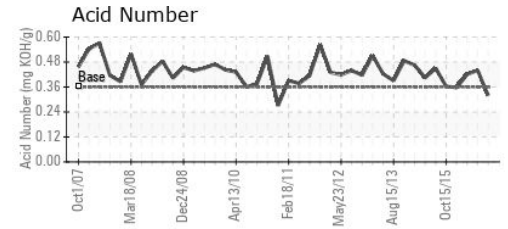
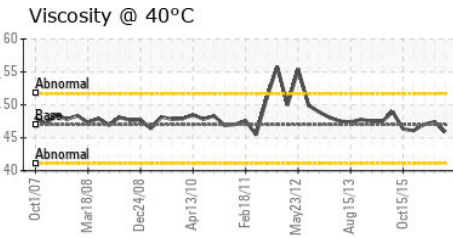
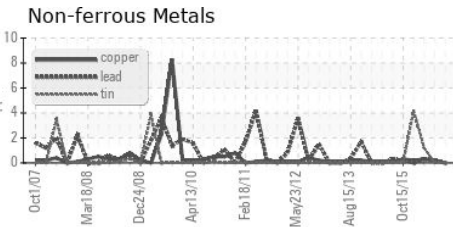
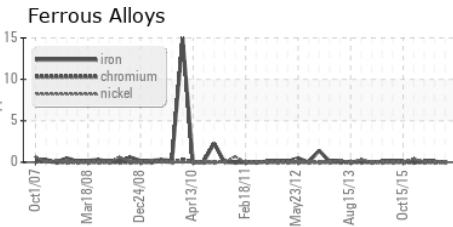
VISUAL	method	limit/base	current	history1	history2
White Metal	scalar	*Visual	NONE	NONE	LIGHT
Yellow Metal	scalar	*Visual	NONE	NONE	NONE
Precipitate	scalar	*Visual	NONE	NONE	NONE
Silt	scalar	*Visual	NONE	NONE	NONE
Debris	scalar	*Visual	NONE	NONE	NONE
Sand/Dirt	scalar	*Visual	NONE	NONE	NONE
Appearance	scalar	*Visual	NORML	NORML	NORML
Odor	scalar	*Visual	NORML	NORML	NORML
Emulsified Water	scalar	*Visual	>0.2	NEG	NEG
Free Water	scalar	*Visual		NEG	NEG

FLUID PROPERTIES	method	limit/base	current	history1	history2	
Visc @ 40°C	cSt	ASTM D445	46.99	<b>45.9</b>	47.44	47.06

SAMPLE IMAGES	method	limit/base	current	history1	history2
---------------	--------	------------	---------	----------	----------



## GRAPHS



**Laboratory** : WearCheck USA - 501 Madison Ave., Cary, NC 27513  
**Sample No.** : WC0776134 **Received** : 20 Nov 2023  
**Lab Number** : **06012598** **Diagnosed** : 22 Nov 2023  
**Unique Number** : 10751742 **Diagnostician** : Don Baldrige  
**Test Package** : IND 2

**LEPRINO FOODS - WAVERLY**  
 400 LEPRINO AVE  
 WAVERLY, NY  
 US 14892  
 Contact: ED TWINING  
 ETWINING@LEPRINOFOODS.COM  
 T:  
 F: (570)882-7290

To discuss this sample report, contact Customer Service at 1-800-237-1369.  
 \* - Denotes test methods that are outside of the ISO 17025 scope of accreditation.  
 Statements of conformity to specifications are based on the simple acceptance decision rule (JCGM 106:2012)