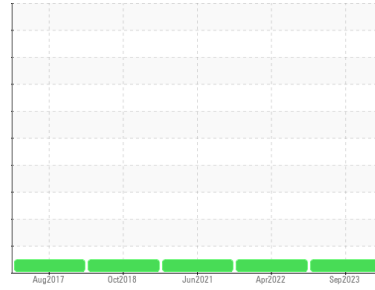


Area
ULTRA COOLANT
 Machine Id
INGERSOLL RAND CBV374956 - BRUNSWICK CTY SVC CTR
 Component
Compressor



DIAGNOSIS

Recommendation
 Resample at the next service interval to monitor.

Wear
 All component wear rates are normal.

Contamination
 There is no indication of any contamination in the oil.

Fluid Condition
 The AN level is acceptable for this fluid. The condition of the oil is suitable for further service.

SAMPLE INFORMATION

	method	limit/base	current	history1	history2
Sample Number	Client Info		UCP06015244	UCP05558587	UCP05291354
Sample Date	Client Info		25 Sep 2023	04 Apr 2022	08 Jun 2021
Machine Age	hrs	Client Info	4102	3782	3567
Oil Age	hrs	Client Info	4102	3782	3567
Oil Changed		Client Info	N/A	Changed	N/A
Sample Status			NORMAL	NORMAL	NORMAL

CONTAMINATION

	method	limit/base	current	history1	history2
Water	WC Method	>0.1	NEG	NEG	NEG

WEAR METALS

	method	limit/base	current	history1	history2
Iron	ppm	ASTM D5185m >50	0	1	<1
Chromium	ppm	ASTM D5185m >10	0	0	0
Nickel	ppm	ASTM D5185m	0	0	<1
Titanium	ppm	ASTM D5185m	0	0	0
Silver	ppm	ASTM D5185m	0	0	0
Aluminum	ppm	ASTM D5185m >25	0	<1	0
Lead	ppm	ASTM D5185m >25	<1	0	<1
Copper	ppm	ASTM D5185m >50	<1	1	<1
Tin	ppm	ASTM D5185m >15	<1	<1	<1
Antimony	ppm	ASTM D5185m	---	---	0
Vanadium	ppm	ASTM D5185m	<1	0	0
Cadmium	ppm	ASTM D5185m	0	0	0

ADDITIVES

	method	limit/base	current	history1	history2
Boron	ppm	ASTM D5185m	0	1	4
Barium	ppm	ASTM D5185m 556	542	381	383
Molybdenum	ppm	ASTM D5185m	0	0	0
Manganese	ppm	ASTM D5185m	0	0	0
Magnesium	ppm	ASTM D5185m	0	0	<1
Calcium	ppm	ASTM D5185m 242	<1	27	19
Phosphorus	ppm	ASTM D5185m 0	0	4	9
Zinc	ppm	ASTM D5185m 0	0	21	9
Sulfur	ppm	ASTM D5185m 306	271	391	181

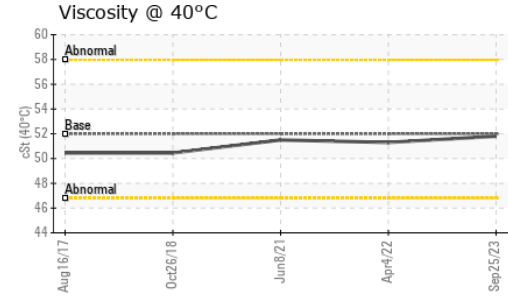
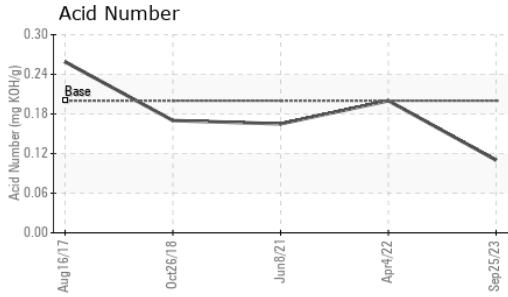
CONTAMINANTS

	method	limit/base	current	history1	history2
Silicon	ppm	ASTM D5185m >25	1	3	3
Sodium	ppm	ASTM D5185m	51	86	64
Potassium	ppm	ASTM D5185m >20	1	1	3

FLUID DEGRADATION

	method	limit/base	current	history1	history2
Acid Number (AN)	mg KOH/g	ASTM D8045 0.2	0.11	0.20	0.165

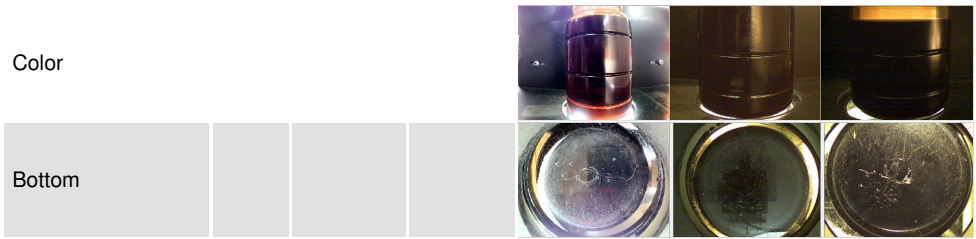
OIL ANALYSIS REPORT



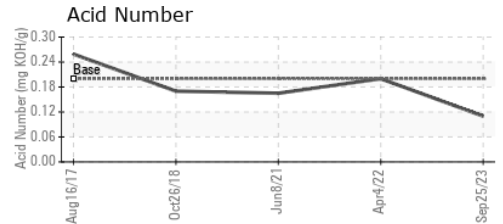
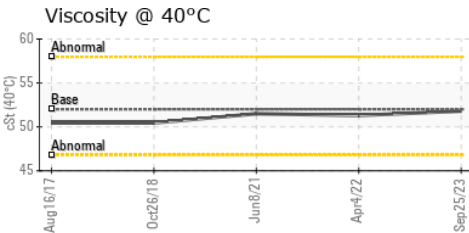
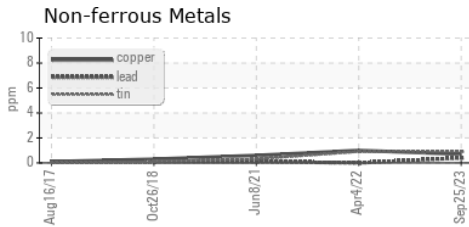
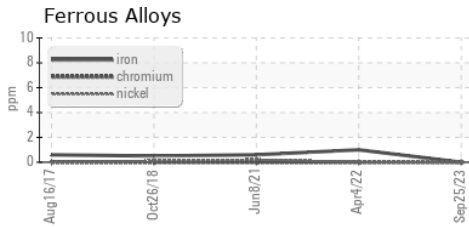
VISUAL	method	limit/base	current	history1	history2	
White Metal	scalar	*Visual	NONE	LIGHT	VLITE	LIGHT
Yellow Metal	scalar	*Visual	NONE	NONE	NONE	NONE
Precipitate	scalar	*Visual	NONE	NONE	NONE	NONE
Silt	scalar	*Visual	NONE	NONE	NONE	NONE
Debris	scalar	*Visual	NONE	LIGHT	NONE	VLITE
Sand/Dirt	scalar	*Visual	NONE	NONE	NONE	NONE
Appearance	scalar	*Visual	NORML	NORML	NORML	NORML
Odor	scalar	*Visual	NORML	NORML	NORML	NORML
Emulsified Water	scalar	*Visual	>0.1	NEG	NEG	NEG
Free Water	scalar	*Visual		NEG	NEG	NEG

FLUID PROPERTIES	method	limit/base	current	history1	history2
Visc @ 40°C	cSt	ASTM D445 52	51.8	51.3	51.5

SAMPLE IMAGES	method	limit/base	current	history1	history2
---------------	--------	------------	---------	----------	----------



GRAPHS



Laboratory : WearCheck USA - 501 Madison Ave., Cary, NC 27513
Sample No. : UCP06015244 **Received** : 22 Nov 2023
Lab Number : **06015244** **Diagnosed** : 30 Nov 2023
Unique Number : 10754388 **Diagnostician** : Don Baldrige
Test Package : IND 2

PATTONS INC - RALEIGH
 2616 DISCOVERY DRIVE
 RALEIGH, NC
 US 27616
 Contact: AARON MCCOY
 aaron.mccoey@pattonsync.com
 T: (919)872-6411
 F: (919)876-1961

To discuss this sample report, contact Customer Service at 1-800-237-1369.
 * - Denotes test methods that are outside of the ISO 17025 scope of accreditation.
 Statements of conformity to specifications are based on the simple acceptance decision rule (JCGM 106:2012)