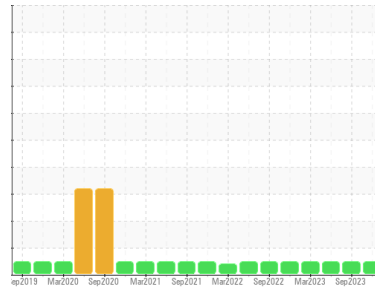




# OIL ANALYSIS REPORT

Sample Rating Trend

**NORMAL**



Machine Id  
**INKS\_U1 INKS\_U1\_P1**  
 Component  
**Drive End Pump**  
 Fluid  
**ROYAL PURPLE SYNFILM GT 32 (--- GAL)**

## DIAGNOSIS

### Recommendation

Resample at the next service interval to monitor.

### Wear

All component wear rates are normal.

### Contamination

The water content is negligible. There is no indication of any contamination in the oil.

### Fluid Condition

The AN level is acceptable for this fluid. The condition of the oil is suitable for further service.

SAMPLE INFORMATION		method	limit/base	current	history1	history2
Sample Number	Client Info			<b>RP0034173</b>	RP0033799	RP0026125
Sample Date	Client Info			<b>15 Nov 2023</b>	25 Sep 2023	14 Jun 2023
Machine Age	hrs	Client Info		<b>0</b>	0	0
Oil Age	hrs	Client Info		<b>0</b>	0	0
Oil Changed	Client Info			<b>N/A</b>	N/A	N/A
Sample Status				<b>NORMAL</b>	NORMAL	NORMAL

WEAR METALS		method	limit/base	current	history1	history2
Iron	ppm	ASTM D5185m	>90	<b>18</b>	8	31
Chromium	ppm	ASTM D5185m	>5	<b>0</b>	0	<1
Nickel	ppm	ASTM D5185m	>5	<b>&lt;1</b>	0	0
Titanium	ppm	ASTM D5185m	>3	<b>0</b>	0	0
Silver	ppm	ASTM D5185m	>3	<b>0</b>	0	0
Aluminum	ppm	ASTM D5185m	>7	<b>0</b>	0	<1
Lead	ppm	ASTM D5185m	>12	<b>&lt;1</b>	<1	0
Copper	ppm	ASTM D5185m	>30	<b>1</b>	2	0
Tin	ppm	ASTM D5185m	>9	<b>0</b>	0	0
Vanadium	ppm	ASTM D5185m		<b>0</b>	0	0
Cadmium	ppm	ASTM D5185m		<b>0</b>	0	0

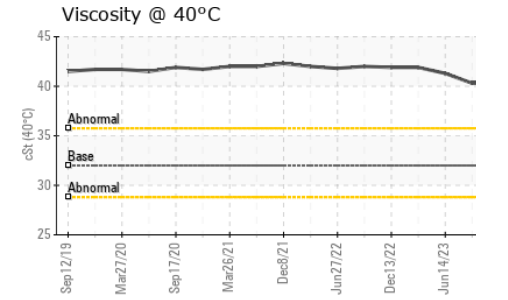
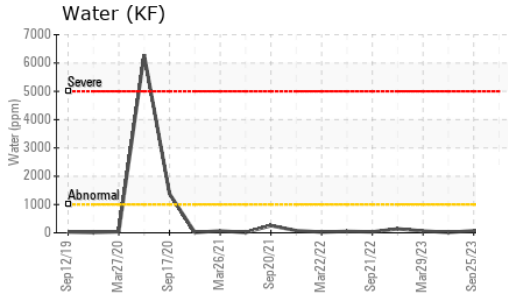
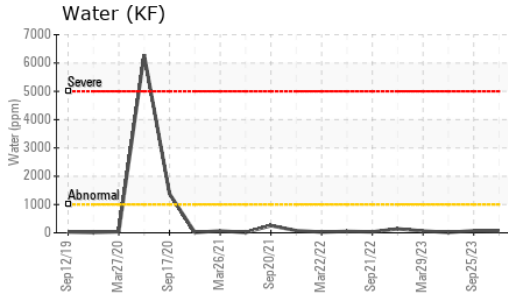
ADDITIVES		method	limit/base	current	history1	history2
Boron	ppm	ASTM D5185m		<b>0</b>	0	0
Barium	ppm	ASTM D5185m		<b>0</b>	0	0
Molybdenum	ppm	ASTM D5185m		<b>0</b>	0	0
Manganese	ppm	ASTM D5185m		<b>&lt;1</b>	0	<1
Magnesium	ppm	ASTM D5185m		<b>2</b>	2	<1
Calcium	ppm	ASTM D5185m		<b>1</b>	0	4
Phosphorus	ppm	ASTM D5185m		<b>4</b>	5	2
Zinc	ppm	ASTM D5185m		<b>10</b>	19	7

CONTAMINANTS		method	limit/base	current	history1	history2
Silicon	ppm	ASTM D5185m	>60	<b>&lt;1</b>	0	0
Sodium	ppm	ASTM D5185m		<b>1</b>	0	0
Potassium	ppm	ASTM D5185m	>20	<b>&lt;1</b>	1	0
Water	%	ASTM D6304	>.1	<b>0.005</b>	0.007	0.002
ppm Water	ppm	ASTM D6304	>1000	<b>54</b>	72.5	15.7

FLUID DEGRADATION		method	limit/base	current	history1	history2
Acid Number (AN)	mg KOH/g	ASTM D8045		<b>0.181</b>	0.043	0.042

VISUAL		method	limit/base	current	history1	history2
White Metal	scalar	*Visual	NONE	<b>NONE</b>	NONE	NONE
Yellow Metal	scalar	*Visual	NONE	<b>NONE</b>	NONE	NONE
Precipitate	scalar	*Visual	NONE	<b>NONE</b>	NONE	NONE
Silt	scalar	*Visual	NONE	<b>NONE</b>	NONE	NONE
Debris	scalar	*Visual	NONE	<b>NONE</b>	NONE	NONE
Sand/Dirt	scalar	*Visual	NONE	<b>NONE</b>	NONE	NONE
Appearance	scalar	*Visual	NORML	<b>NORML</b>	NORML	NORML
Odor	scalar	*Visual	NORML	<b>NORML</b>	NORML	NORML
Emulsified Water	scalar	*Visual	>.1	<b>NEG</b>	NEG	NEG
Free Water	scalar	*Visual		<b>NEG</b>	NEG	NEG

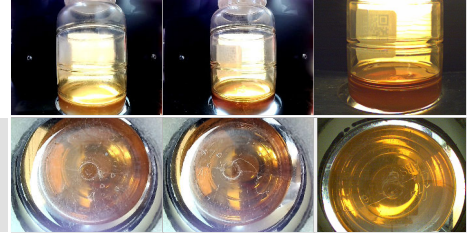
# OIL ANALYSIS REPORT



FLUID PROPERTIES		method	limit/base	current	history1	history2
Visc @ 40°C	cSt	ASTM D445	32	<b>40.3</b>	40.3	41.3

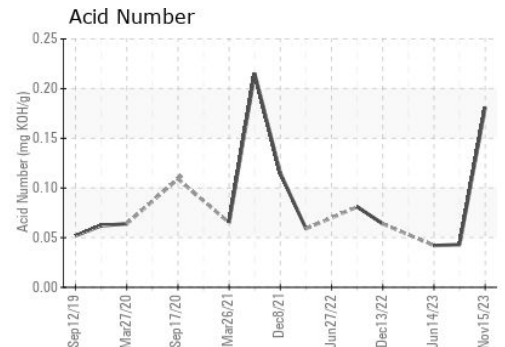
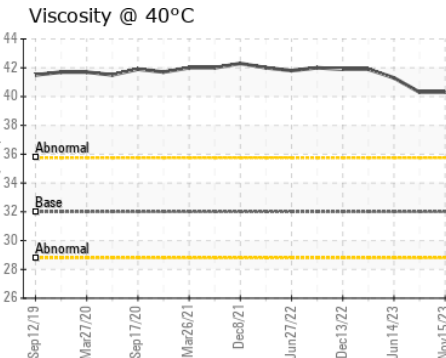
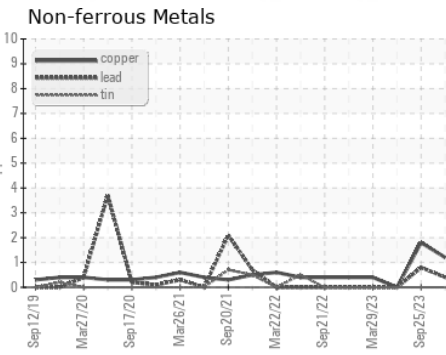
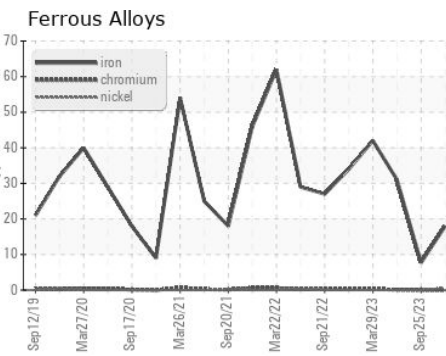
SAMPLE IMAGES		method	limit/base	current	history1	history2
---------------	--	--------	------------	---------	----------	----------

Color



Bottom

## GRAPHS



Certificate L2367

**Laboratory** : WearCheck USA - 501 Madison Ave., Cary, NC 27513  
**Sample No.** : RP0034173  
**Lab Number** : 06016522  
**Unique Number** : 10755666  
**Test Package** : IND 2

**ENERGY TRANSFER - INKSTER**  
 7155 INKSTER ROAD  
 TAYOR, MI  
 US 48180  
 Contact: NATHAN HOLMES  
 nathan.holmes@energytransfer.com

To discuss this sample report, contact Customer Service at 1-800-237-1369.

\* - Denotes test methods that are outside of the ISO 17025 scope of accreditation.

Statements of conformity to specifications are based on the simple acceptance decision rule (JCGM 106:2012)

T:  
F: