



PROBLEM SUMMARY

Sample Rating Trend



ISO



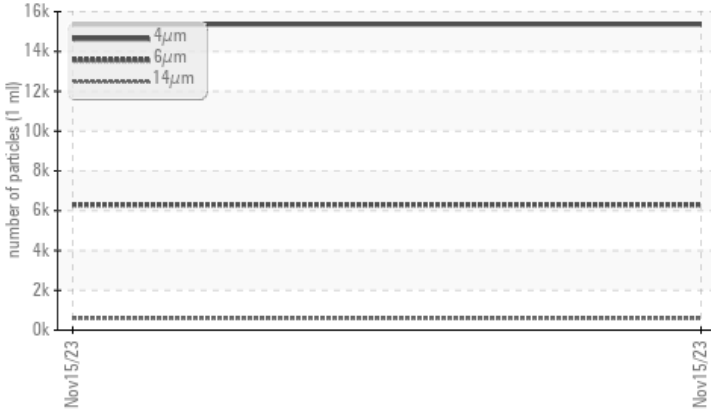
Machine Id
7463061 (S/N 1339)

Component
Compressor

Fluid
KAESER SIGMA (OEM) M-460 (--- GAL)

COMPONENT CONDITION SUMMARY

▲ Particle Trend



RECOMMENDATION

Oil and filter change at the time of sampling has been noted. No corrective action is recommended at this time. Resample at the next service interval to monitor.

PROBLEMATIC TEST RESULTS

Sample Status			ABNORMAL	---	---
Particles >6µm	ASTM D7647	>1300	▲ 6296	---	---
Particles >14µm	ASTM D7647	>80	▲ 597	---	---
Particles >21µm	ASTM D7647	>20	▲ 171	---	---
Particles >38µm	ASTM D7647	>4	▲ 6	---	---
Oil Cleanliness	ISO 4406 (c)	>--/17/13	▲ 21/20/16	---	---

Customer Id: LANSANCA
Sample No.: KCP28287
Lab Number: 06025747
Test Package: IND 2



To manage this report scan the QR code

To discuss the diagnosis or test data:
Don Baldrige +1
don.b505@comcast.net

To change component or sample information:
Customer Service +1 1-800-237-1369
customerservice@wearcheck.com

RECOMMENDED ACTIONS

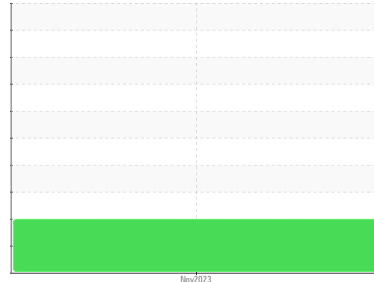
Action	Status	Date	Done By	Description
Change Fluid	---	---	?	Oil and filter change at the time of sampling has been noted.
Change Filter	---	---	?	Oil and filter change at the time of sampling has been noted.

HISTORICAL DIAGNOSIS



OIL ANALYSIS REPORT

Sample Rating Trend



ISO



Machine Id
7463061 (S/N 1339)

Component
Compressor
Fluid
KAESER SIGMA (OEM) M-460 (--- GAL)

DIAGNOSIS

▲ Recommendation

Oil and filter change at the time of sampling has been noted. No corrective action is recommended at this time. Resample at the next service interval to monitor.

Wear

All component wear rates are normal.

▲ Contamination

There is a high amount of particulates present in the oil.

Fluid Condition

The AN level is acceptable for this fluid. The condition of the oil is suitable for further service.

SAMPLE INFORMATION

method	limit/base	current	history1	history2
Sample Number	Client Info	KCP28287	---	---
Sample Date	Client Info	15 Nov 2023	---	---
Machine Age	hrs	Client Info	2937	---
Oil Age	hrs	Client Info	0	---
Oil Changed	Client Info	Changed	---	---
Sample Status		ABNORMAL	---	---

WEAR METALS

method	limit/base	current	history1	history2
Iron	ppm	ASTM D5185m >50	0	---
Chromium	ppm	ASTM D5185m >10	0	---
Nickel	ppm	ASTM D5185m >3	0	---
Titanium	ppm	ASTM D5185m >3	0	---
Silver	ppm	ASTM D5185m >2	0	---
Aluminum	ppm	ASTM D5185m >10	0	---
Lead	ppm	ASTM D5185m >10	1	---
Copper	ppm	ASTM D5185m >50	2	---
Tin	ppm	ASTM D5185m >10	0	---
Vanadium	ppm	ASTM D5185m	0	---
Cadmium	ppm	ASTM D5185m	0	---

ADDITIVES

method	limit/base	current	history1	history2
Boron	ppm	ASTM D5185m 0	0	---
Barium	ppm	ASTM D5185m 90	0	---
Molybdenum	ppm	ASTM D5185m 0	0	---
Manganese	ppm	ASTM D5185m	<1	---
Magnesium	ppm	ASTM D5185m 100	54	---
Calcium	ppm	ASTM D5185m 0	1	---
Phosphorus	ppm	ASTM D5185m 0	3	---
Zinc	ppm	ASTM D5185m 0	0	---
Sulfur	ppm	ASTM D5185m 23500	18976	---

CONTAMINANTS

method	limit/base	current	history1	history2
Silicon	ppm	ASTM D5185m >25	2	---
Sodium	ppm	ASTM D5185m	14	---
Potassium	ppm	ASTM D5185m >20	3	---
Water	%	ASTM D6304 >0.05	0.016	---
ppm Water	ppm	ASTM D6304 >500	162	---

FLUID CLEANLINESS

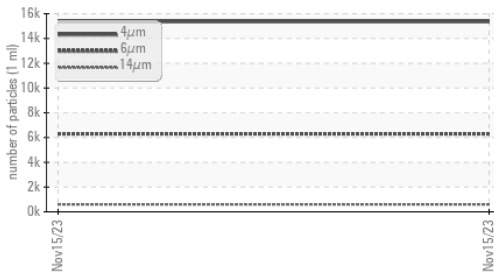
method	limit/base	current	history1	history2
Particles >4µm	ASTM D7647	15363	---	---
Particles >6µm	ASTM D7647 >1300	▲ 6296	---	---
Particles >14µm	ASTM D7647 >80	▲ 597	---	---
Particles >21µm	ASTM D7647 >20	▲ 171	---	---
Particles >38µm	ASTM D7647 >4	▲ 6	---	---
Particles >71µm	ASTM D7647 >3	0	---	---
Oil Cleanliness	ISO 4406 (c) >--/17/13	▲ 21/20/16	---	---

FLUID DEGRADATION

method	limit/base	current	history1	history2
Acid Number (AN)	mg KOH/g	ASTM D8045 1.0	0.32	---

OIL ANALYSIS REPORT

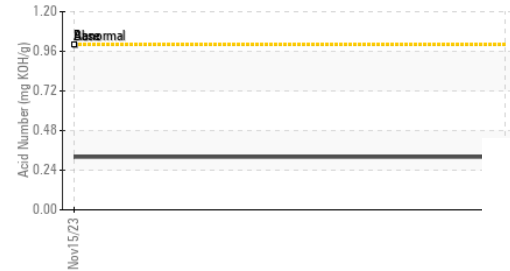
▲ Particle Trend



Water (KF)



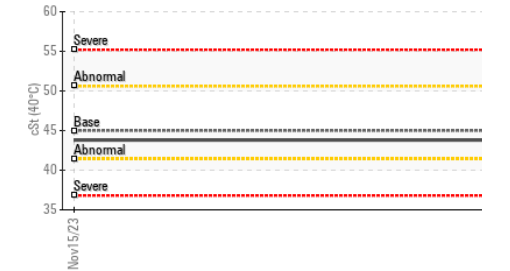
Acid Number



Water (KF)



Viscosity @ 40°C



VISUAL	method	limit/base	current	history1	history2
White Metal	scalar	*Visual NONE	NONE	---	---
Yellow Metal	scalar	*Visual NONE	LIGHT	---	---
Precipitate	scalar	*Visual NONE	NONE	---	---
Silt	scalar	*Visual NONE	NONE	---	---
Debris	scalar	*Visual NONE	LIGHT	---	---
Sand/Dirt	scalar	*Visual NONE	NONE	---	---
Appearance	scalar	*Visual NORML	NORML	---	---
Odor	scalar	*Visual NORML	NORML	---	---
Emulsified Water	scalar	*Visual >0.05	NEG	---	---
Free Water	scalar	*Visual	NEG	---	---

FLUID PROPERTIES	method	limit/base	current	history1	history2
Visc @ 40°C	cSt	ASTM D445 45	43.8	---	---

SAMPLE IMAGES	method	limit/base	current	history1	history2
---------------	--------	------------	---------	----------	----------

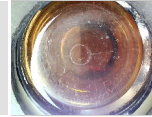
Color



no image

no image

Bottom



no image

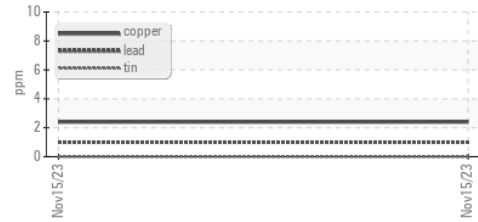
no image

GRAPHS

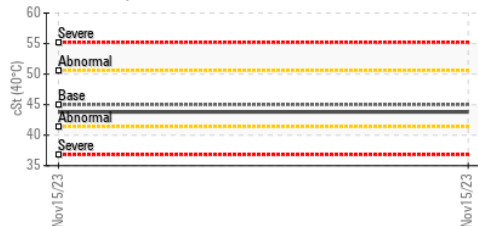
Ferrous Alloys



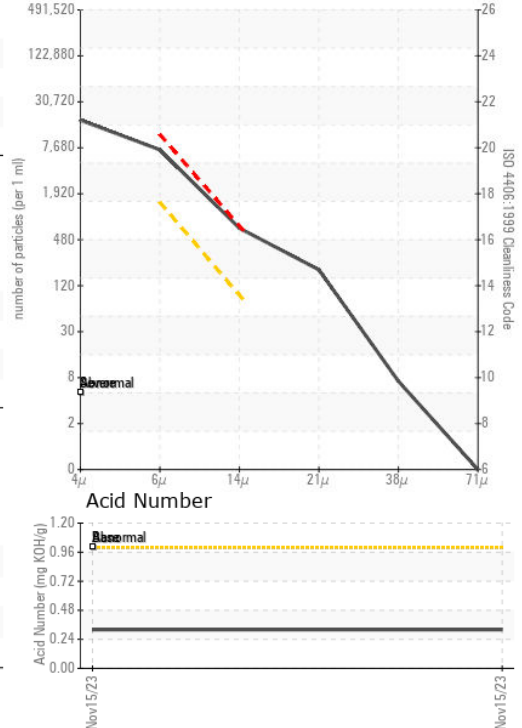
Non-ferrous Metals



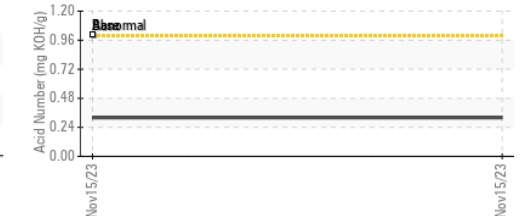
Viscosity @ 40°C



▲ Particle Count



Acid Number



Certificate L2367

Laboratory : WearCheck USA - 501 Madison Ave., Cary, NC 27513
Sample No. : KCP28287 **Received** : 05 Dec 2023
Lab Number : 06025747 **Diagnosed** : 07 Dec 2023
Unique Number : 10775538 **Diagnostician** : Don Baldrige
Test Package : IND 2 (Additional Tests: KF, PrtCount)

LANDMARK GRAFIX INC
 130 DOOLITTLE DR, SUITE 12
 SAN LEANDRO, CA
 US 94577
 Contact: Service Manager

To discuss this sample report, contact Customer Service at 1-800-237-1369.

* - Denotes test methods that are outside of the ISO 17025 scope of accreditation.

Statements of conformity to specifications are based on the simple acceptance decision rule (JCGM 106:2012)

T:
F: