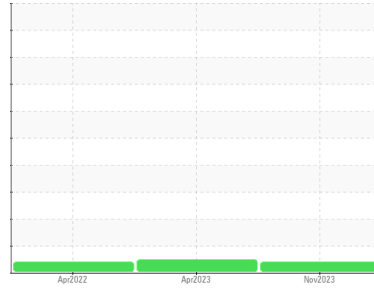




# PROBLEM SUMMARY

Sample Rating Trend



## VIS DEBRIS



Machine Id  
**KAESER ASD 30 2356155 (S/N 1022)**  
Component  
**Compressor**  
Fluid  
**KAESER SIGMA (OEM) M-460 (--- GAL)**

### COMPONENT CONDITION SUMMARY

No relevant graphs to display

### RECOMMENDATION

We recommend you service the filters on this component. Resample at the next service interval to monitor. We were unable to perform a particle count due to a high concentration of particles present in this sample.

### PROBLEMATIC TEST RESULTS

Sample Status		ABNORMAL	NORMAL	ABNORMAL
Debris	scalar *Visual	▲ MODER	NONE	▲ MODER

**Customer Id:** AGGMORCO  
**Sample No.:** KCPA007091  
**Lab Number:** 06026422  
**Test Package:** IND 2



To manage this report scan the QR code

To discuss the diagnosis or test data:  
Don Baldrige +1  
[don.b505@comcast.net](mailto:don.b505@comcast.net)

To change component or sample information:  
Customer Service +1 1-800-237-1369  
[customerservice@wearcheck.com](mailto:customerservice@wearcheck.com)

## RECOMMENDED ACTIONS

Action	Status	Date	Done By	Description
Change Filter	---	---	?	We recommend you service the filters on this component.
Alert	---	---	?	We were unable to perform a particle count due to a high concentration of particles present in this sample.

## HISTORICAL DIAGNOSIS

### 11 Apr 2023 Diag: Doug Bogart

#### NORMAL



No corrective action is recommended at this time. The filter change at the time of sampling has been noted. Resample at the next service interval to monitor. All component wear rates are normal. There is no indication of any contamination in the oil. The amount and size of particulates present in the system are acceptable. The AN level is acceptable for this fluid. The condition of the oil is suitable for further service.

[view report](#)



### 06 Apr 2022 Diag: Doug Bogart

#### VIS DEBRIS



Oil and filter change at the time of sampling has been noted. Resample at the next service interval to monitor. We were unable to perform a particle count due to a high concentration of particles present in this sample. All component wear rates are normal. Moderate concentration of visible dirt/debris present in the oil. The AN level is acceptable for this fluid. The condition of the oil is suitable for further service.

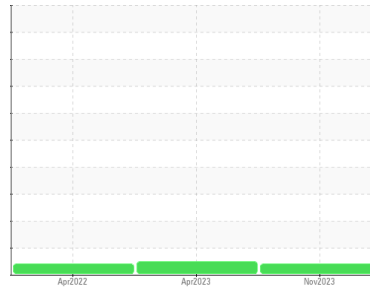
[view report](#)





# OIL ANALYSIS REPORT

Sample Rating Trend



VIS DEBRIS



Machine Id  
**KAESER ASD 30 2356155 (S/N 1022)**

Component  
**Compressor**

Fluid  
**KAESER SIGMA (OEM) M-460 (--- GAL)**

## DIAGNOSIS

### Recommendation

We recommend you service the filters on this component. Resample at the next service interval to monitor. We were unable to perform a particle count due to a high concentration of particles present in this sample.

### Wear

All component wear rates are normal.

### Contamination

Moderate concentration of visible dirt/debris present in the oil.

### Fluid Condition

The AN level is acceptable for this fluid. The condition of the oil is suitable for further service.

SAMPLE INFORMATION		method	limit/base	current	history1	history2
Sample Number	Client Info			<b>KCPA007091</b>	KCPA001103	KCP45249
Sample Date	Client Info			<b>16 Nov 2023</b>	11 Apr 2023	06 Apr 2022
Machine Age	hrs	Client Info		<b>47412</b>	43383	38516
Oil Age	hrs	Client Info		<b>0</b>	0	17409
Oil Changed	Client Info			<b>N/A</b>	N/A	Changed
Sample Status				<b>ABNORMAL</b>	NORMAL	ABNORMAL

WEAR METALS		method	limit/base	current	history1	history2
Iron	ppm	ASTM D5185m	>50	<b>0</b>	0	0
Chromium	ppm	ASTM D5185m	>10	<b>0</b>	0	0
Nickel	ppm	ASTM D5185m	>3	<b>0</b>	0	0
Titanium	ppm	ASTM D5185m	>3	<b>0</b>	0	0
Silver	ppm	ASTM D5185m	>2	<b>0</b>	0	<1
Aluminum	ppm	ASTM D5185m	>10	<b>0</b>	0	<1
Lead	ppm	ASTM D5185m	>10	<b>0</b>	0	0
Copper	ppm	ASTM D5185m	>50	<b>6</b>	12	4
Tin	ppm	ASTM D5185m	>10	<b>0</b>	0	0
Vanadium	ppm	ASTM D5185m		<b>0</b>	0	0
Cadmium	ppm	ASTM D5185m		<b>0</b>	0	0

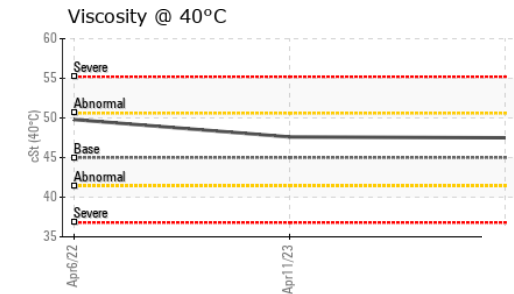
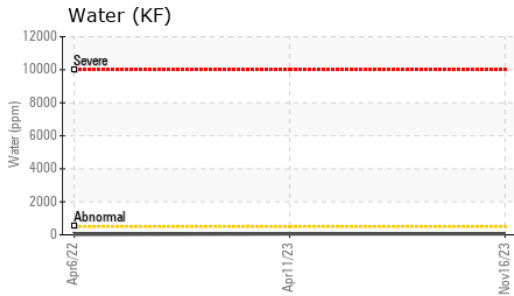
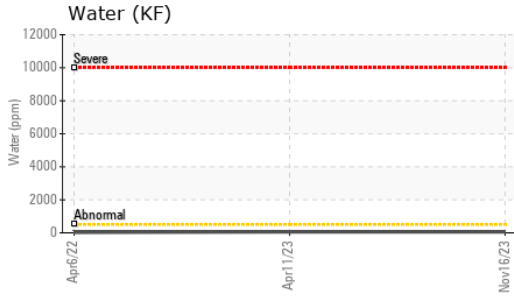
ADDITIVES		method	limit/base	current	history1	history2
Boron	ppm	ASTM D5185m	0	<b>0</b>	0	<1
Barium	ppm	ASTM D5185m	90	<b>0</b>	0	0
Molybdenum	ppm	ASTM D5185m	0	<b>0</b>	0	0
Manganese	ppm	ASTM D5185m		<b>&lt;1</b>	0	0
Magnesium	ppm	ASTM D5185m	100	<b>0</b>	<1	0
Calcium	ppm	ASTM D5185m	0	<b>0</b>	0	0
Phosphorus	ppm	ASTM D5185m	0	<b>2</b>	0	6
Zinc	ppm	ASTM D5185m	0	<b>0</b>	0	0
Sulfur	ppm	ASTM D5185m	23500	<b>16373</b>	17885	10342

CONTAMINANTS		method	limit/base	current	history1	history2
Silicon	ppm	ASTM D5185m	>25	<b>0</b>	<1	<1
Sodium	ppm	ASTM D5185m		<b>1</b>	0	<1
Potassium	ppm	ASTM D5185m	>20	<b>0</b>	<1	0
Water	%	ASTM D6304	>0.05	<b>0.005</b>	0.005	0.003
ppm Water	ppm	ASTM D6304	>500	<b>55</b>	55.8	29.5

FLUID CLEANLINESS		method	limit/base	current	history1	history2
Particles >4µm		ASTM D7647		<b>---</b>	3505	---
Particles >6µm		ASTM D7647	>1300	<b>---</b>	662	---
Particles >14µm		ASTM D7647	>80	<b>---</b>	33	---
Particles >21µm		ASTM D7647	>20	<b>---</b>	7	---
Particles >38µm		ASTM D7647	>4	<b>---</b>	1	---
Particles >71µm		ASTM D7647	>3	<b>---</b>	0	---
Oil Cleanliness		ISO 4406 (c)	>--/17/13	<b>---</b>	19/17/12	---

FLUID DEGRADATION		method	limit/base	current	history1	history2
Acid Number (AN)	mg KOH/g	ASTM D8045	1.0	<b>0.41</b>	0.47	0.50

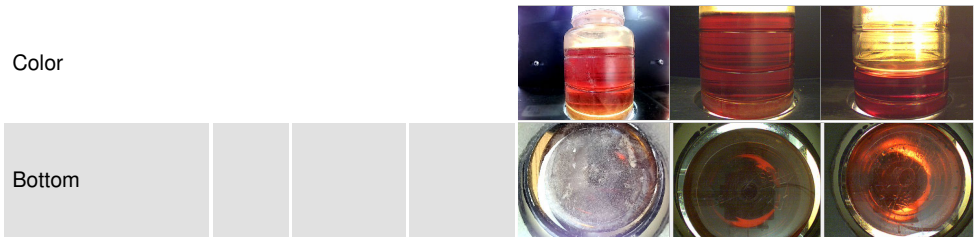
# OIL ANALYSIS REPORT



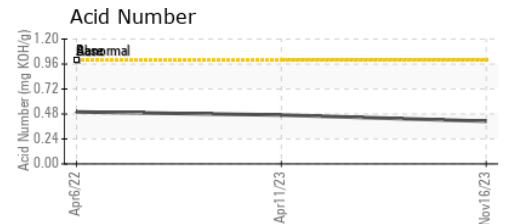
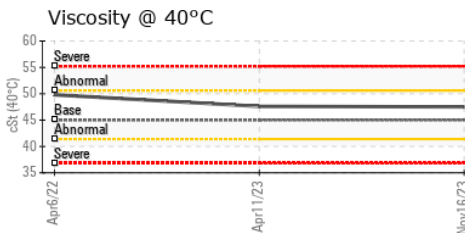
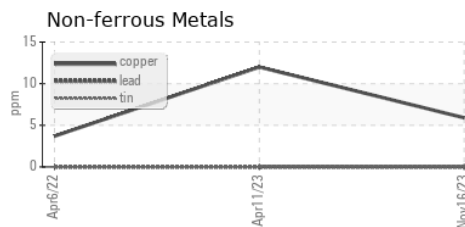
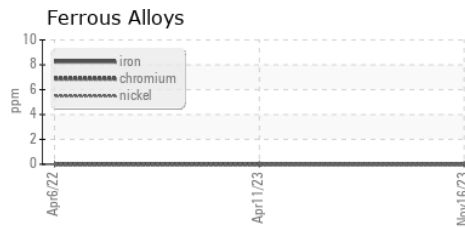
VISUAL	method	limit/base	current	history1	history2
White Metal	scalar	*Visual	NONE	NONE	NONE
Yellow Metal	scalar	*Visual	NONE	NONE	NONE
Precipitate	scalar	*Visual	NONE	NONE	NONE
Silt	scalar	*Visual	NONE	NONE	NONE
Debris	scalar	*Visual	NONE	▲ MODER	▲ MODER
Sand/Dirt	scalar	*Visual	NONE	NONE	NONE
Appearance	scalar	*Visual	NORML	NORML	NORML
Odor	scalar	*Visual	NORML	NORML	NORML
Emulsified Water	scalar	*Visual	>0.05	NEG	NEG
Free Water	scalar	*Visual		NEG	NEG

FLUID PROPERTIES	method	limit/base	current	history1	history2
Visc @ 40°C	cSt	ASTM D445	45	47.5	47.6

SAMPLE IMAGES	method	limit/base	current	history1	history2
---------------	--------	------------	---------	----------	----------



## GRAPHS



Certificate L2367

**Laboratory** : WearCheck USA - 501 Madison Ave., Cary, NC 27513  
**Sample No.** : KCPA007091 **Received** : 06 Dec 2023  
**Lab Number** : 06026422 **Diagnosed** : 07 Dec 2023  
**Unique Number** : 10776213 **Diagnostician** : Don Baldrige  
**Test Package** : IND 2 ( Additional Tests: KF, PrtCount )

**AGGREGATE INDUSTRIES**  
 18131 HWY 8  
 MORRISON, CO  
 US 80465  
 Contact: Service Manager

To discuss this sample report, contact Customer Service at 1-800-237-1369.

\* - Denotes test methods that are outside of the ISO 17025 scope of accreditation.

Statements of conformity to specifications are based on the simple acceptance decision rule (JCGM 106:2012)

T:  
F: