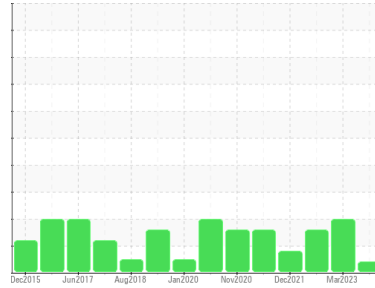




PROBLEM SUMMARY

Sample Rating Trend



VIS DEBRIS



Machine Id
KAESER ASD 40 5338914 (S/N 1090)
 Component
Compressor
 Fluid
KAESER SIGMA (OEM) M-460 (--- GAL)

COMPONENT CONDITION SUMMARY

No relevant graphs to display

RECOMMENDATION

No corrective action is recommended at this time. The filter change at the time of sampling has been noted. Resample at the next service interval to monitor. We were unable to perform a particle count due to a high concentration of particles present in this sample.

PROBLEMATIC TEST RESULTS

Sample Status				ABNORMAL	ABNORMAL	ABNORMAL
Debris	scalar	*Visual	NONE	▲ MODER	LIGHT	LIGHT

Customer Id: ALPDEN
 Sample No.: KCPA009491
 Lab Number: 06026427
 Test Package: IND 2



To manage this report scan the QR code

To discuss the diagnosis or test data:
 Don Baldrige +1
don.b505@comcast.net

To change component or sample information:
 Customer Service +1 1-800-237-1369
customerservice@wearcheck.com

RECOMMENDED ACTIONS

Action	Status	Date	Done By	Description
Alert	---	---	?	We were unable to perform a particle count due to a high concentration of particles present in this sample.

HISTORICAL DIAGNOSIS

20 Mar 2023 Diag: Don Baldrige

ISO



No corrective action is recommended at this time. The filter change at the time of sampling has been noted. Resample at the next service interval to monitor. All component wear rates are normal. There is a high amount of particulates present in the oil. The AN level is acceptable for this fluid. The condition of the oil is suitable for further service.

view report



06 Jul 2022 Diag: Angela Borella

ISO



No corrective action is recommended at this time. Oil and filter change at the time of sampling has been noted. Resample at the next service interval to monitor. All component wear rates are normal. There is a high amount of particulates present in the oil. The AN level is acceptable for this fluid. The condition of the oil is suitable for further service.

view report



16 Dec 2021 Diag: Don Baldrige

ISO



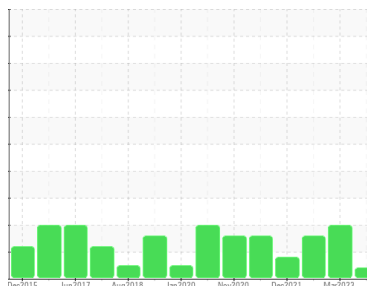
Oil and filter change at the time of sampling has been noted. Resample at the next service interval to monitor. All component wear rates are normal. There is a moderate amount of particulates present in the oil. The AN level is acceptable for this fluid. The condition of the oil is suitable for further service.

view report



Machine Id
KAESER ASD 40 5338914 (S/N 1090)

Component
Compressor
Fluid
KAESER SIGMA (OEM) M-460 (--- GAL)



DIAGNOSIS

▲ Recommendation

No corrective action is recommended at this time. The filter change at the time of sampling has been noted. Resample at the next service interval to monitor. We were unable to perform a particle count due to a high concentration of particles present in this sample.

Wear

All component wear rates are normal.

▲ Contamination

Moderate concentration of visible dirt/debris present in the oil.

Fluid Condition

The AN level is acceptable for this fluid. The condition of the oil is suitable for further service.

SAMPLE INFORMATION

method	limit/base	current	history1	history2
Sample Number	Client Info	KCPA009491	KCPA001199	KCP45379
Sample Date	Client Info	15 Nov 2023	20 Mar 2023	06 Jul 2022
Machine Age	hrs	46238	425580	39802
Oil Age	hrs	0	0	2849
Oil Changed	Client Info	N/A	N/A	Changed
Sample Status		ABNORMAL	ABNORMAL	ABNORMAL

WEAR METALS

method	limit/base	current	history1	history2	
Iron	ppm	ASTM D5185m >50	0	1	<1
Chromium	ppm	ASTM D5185m >10	0	0	0
Nickel	ppm	ASTM D5185m >3	0	0	0
Titanium	ppm	ASTM D5185m >3	0	0	0
Silver	ppm	ASTM D5185m >2	0	0	0
Aluminum	ppm	ASTM D5185m >10	0	<1	<1
Lead	ppm	ASTM D5185m >10	0	0	<1
Copper	ppm	ASTM D5185m >50	13	5	6
Tin	ppm	ASTM D5185m >10	0	0	<1
Antimony	ppm	ASTM D5185m	---	---	---
Vanadium	ppm	ASTM D5185m	0	0	0
Cadmium	ppm	ASTM D5185m	0	0	0

ADDITIVES

method	limit/base	current	history1	history2	
Boron	ppm	ASTM D5185m 0	0	0	0
Barium	ppm	ASTM D5185m 90	0	3	18
Molybdenum	ppm	ASTM D5185m 0	0	0	0
Manganese	ppm	ASTM D5185m	<1	<1	0
Magnesium	ppm	ASTM D5185m 100	29	56	40
Calcium	ppm	ASTM D5185m 0	<1	1	0
Phosphorus	ppm	ASTM D5185m 0	2	2	0
Zinc	ppm	ASTM D5185m 0	<1	12	2
Sulfur	ppm	ASTM D5185m 23500	17799	22182	19016

CONTAMINANTS

method	limit/base	current	history1	history2	
Silicon	ppm	ASTM D5185m >25	0	<1	<1
Sodium	ppm	ASTM D5185m	17	14	14
Potassium	ppm	ASTM D5185m >20	1	6	6
Water	%	ASTM D6304 >0.05	0.013	0.011	0.017
ppm Water	ppm	ASTM D6304 >500	132	112.8	176.7

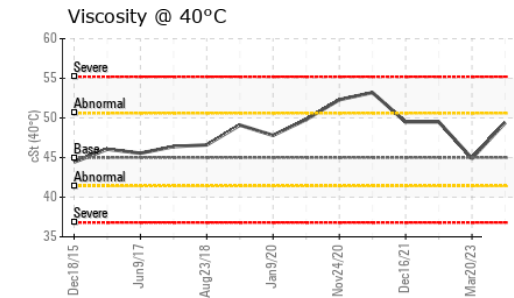
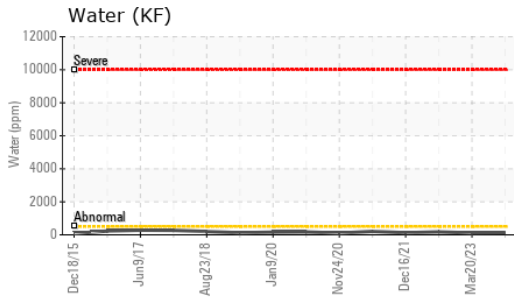
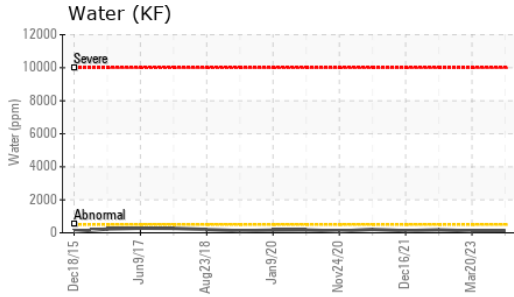
FLUID CLEANLINESS

method	limit/base	current	history1	history2
Particles >4µm	ASTM D7647	---	15580	10391
Particles >6µm	ASTM D7647 >1300	---	▲ 4741	▲ 3698
Particles >14µm	ASTM D7647 >80	---	▲ 345	▲ 373
Particles >21µm	ASTM D7647 >20	---	▲ 79	▲ 58
Particles >38µm	ASTM D7647 >4	---	▲ 9	3
Particles >71µm	ASTM D7647 >3	---	0	1
Oil Cleanliness	ISO 4406 (c) >--/17/13	---	▲ 21/19/16	▲ 21/19/16

FLUID DEGRADATION

method	limit/base	current	history1	history2	
Acid Number (AN)	mg KOH/g	ASTM D8045 1.0	0.39	0.44	0.49

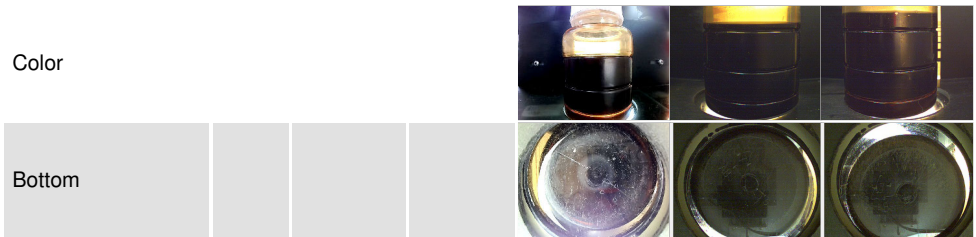
OIL ANALYSIS REPORT



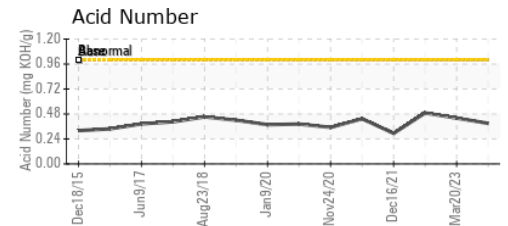
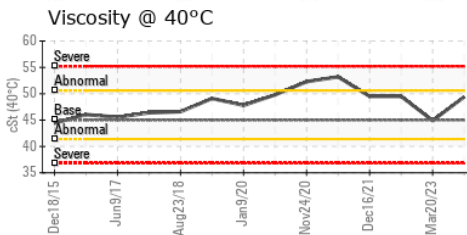
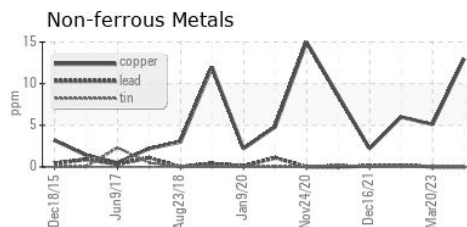
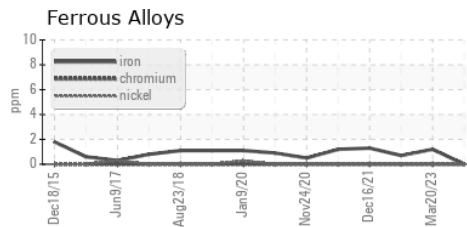
VISUAL	method	limit/base	current	history1	history2
White Metal	scalar	*Visual	NONE	NONE	LIGHT
Yellow Metal	scalar	*Visual	NONE	NONE	NONE
Precipitate	scalar	*Visual	NONE	NONE	NONE
Silt	scalar	*Visual	NONE	NONE	NONE
Debris	scalar	*Visual	NONE	▲ MODER	LIGHT
Sand/Dirt	scalar	*Visual	NONE	NONE	NONE
Appearance	scalar	*Visual	NORML	NORML	NORML
Odor	scalar	*Visual	NORML	NORML	NORML
Emulsified Water	scalar	*Visual	>0.05	NEG	NEG
Free Water	scalar	*Visual		NEG	NEG

FLUID PROPERTIES	method	limit/base	current	history1	history2
Visc @ 40°C	cSt	ASTM D445	45	49.4	44.9

SAMPLE IMAGES	method	limit/base	current	history1	history2
---------------	--------	------------	---------	----------	----------



GRAPHS



Certificate L2367

Laboratory : WearCheck USA - 501 Madison Ave., Cary, NC 27513
Sample No. : KCPA009491 **Received** : 06 Dec 2023
Lab Number : 06026427 **Diagnosed** : 07 Dec 2023
Unique Number : 10776218 **Diagnostician** : Don Baldrige
Test Package : IND 2 (Additional Tests: KF, PrtCount)

ALPINE WASTE & RECYCLING
 645 W 53RD PL
 DENVER, CO
 US 80216
 Contact: SERVICE MANAGER

To discuss this sample report, contact Customer Service at 1-800-237-1369.

* - Denotes test methods that are outside of the ISO 17025 scope of accreditation.

Statements of conformity to specifications are based on the simple acceptance decision rule (JCGM 106:2012)

T:
F: