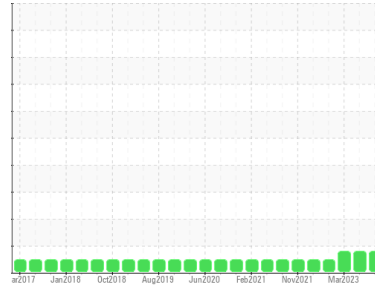




PROBLEM SUMMARY

Sample Rating Trend



SEDIMENT



Machine Id
GARDNER DENVER 4 SLA (S/N 5038557)
 Component
Air Compressor
 Fluid
USPI MAX FG AIR 46 (--- GAL)

COMPONENT CONDITION SUMMARY

No relevant graphs to display

RECOMMENDATION

We recommend you service the filters on this component. Resample at the next service interval to monitor. We were unable to perform a particle count due to a high concentration of particles present in this sample.

PROBLEMATIC TEST RESULTS

Sample Status				ABNORMAL	ABNORMAL	ABNORMAL
Silt	scalar	*Visual	NONE	▲ MODER	▲ MODER	▲ MODER

Customer Id: IBPEMP01
Sample No.: USPM31927
Lab Number: 06026470
Test Package: IND 2



To manage this report scan the QR code

To discuss the diagnosis or test data:
 Doug Bogart +1 (800)237-1369 x4016
dougb@wearcheckusa.com

To change component or sample information:
 Customer Service +1 1-800-237-1369
customerservice@wearcheck.com

RECOMMENDED ACTIONS

Action	Status	Date	Done By	Description
Change Filter	---	---	?	We recommend you service the filters on this component.
Alert	---	---	?	We were unable to perform a particle count due to a high concentration of particles present in this sample.

HISTORICAL DIAGNOSIS

02 Aug 2023 Diag: Doug Bogart

SEDIMENT



We recommend you service the filters on this component. Resample at the next service interval to monitor. We were unable to perform a particle count due to a high concentration of particles present in this sample. All component wear rates are normal. There is a moderate amount of visible silt present in the sample. The AN level is acceptable for this fluid. The condition of the oil is suitable for further service.

[view report](#)



15 Mar 2023 Diag: Doug Bogart

SEDIMENT



We recommend you service the filters on this component. Resample at the next service interval to monitor. We were unable to perform a particle count due to a high concentration of particles present in this sample. All component wear rates are normal. There is a moderate amount of visible silt present in the sample. The AN level is acceptable for this fluid. The condition of the oil is suitable for further service.

[view report](#)



09 Sep 2022 Diag: Doug Bogart

NORMAL



Resample at the next service interval to monitor. All component wear rates are normal. There is no indication of any contamination in the oil. The amount and size of particulates present in the system are acceptable. The AN level is acceptable for this fluid. The condition of the oil is suitable for further service.

[view report](#)

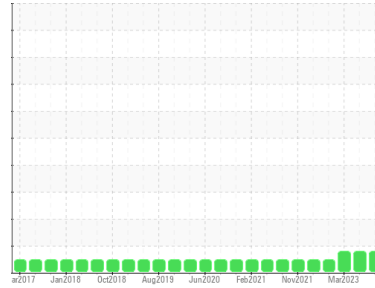




OIL ANALYSIS REPORT

Sample Rating Trend

SEDIMENT



Machine Id
GARDNER DENVER 4 SLA (S/N 5038557)

Component
Air Compressor

Fluid
USPI MAX FG AIR 46 (--- GAL)

DIAGNOSIS

Recommendation

We recommend you service the filters on this component. Resample at the next service interval to monitor. We were unable to perform a particle count due to a high concentration of particles present in this sample.

Wear

All component wear rates are normal.

Contamination

There is a moderate amount of visible silt present in the sample.

Fluid Condition

The AN level is acceptable for this fluid. The condition of the oil is suitable for further service.

SAMPLE INFORMATION

	method	limit/base	current	history1	history2
Sample Number	Client Info		USPM31927	USPM29095	USPM25257
Sample Date	Client Info		05 Dec 2023	02 Aug 2023	15 Mar 2023
Machine Age	hrs	Client Info	0	0	0
Oil Age	hrs	Client Info	0	0	0
Oil Changed	Client Info		N/A	N/A	N/A
Sample Status			ABNORMAL	ABNORMAL	ABNORMAL

WEAR METALS

	method	limit/base	current	history1	history2
Iron	ppm	ASTM D5185m >50	0	0	0
Chromium	ppm	ASTM D5185m >4	0	0	0
Nickel	ppm	ASTM D5185m >4	0	0	0
Titanium	ppm	ASTM D5185m	0	0	0
Silver	ppm	ASTM D5185m	0	0	0
Aluminum	ppm	ASTM D5185m >10	0	0	0
Lead	ppm	ASTM D5185m >20	0	0	0
Copper	ppm	ASTM D5185m >40	4	0	0
Tin	ppm	ASTM D5185m >5	0	0	0
Vanadium	ppm	ASTM D5185m	0	0	0
Cadmium	ppm	ASTM D5185m	0	0	0

ADDITIVES

	method	limit/base	current	history1	history2
Boron	ppm	ASTM D5185m 0	0	0	0
Barium	ppm	ASTM D5185m 0	0	0	0
Molybdenum	ppm	ASTM D5185m 0	0	0	0
Manganese	ppm	ASTM D5185m	<1	0	0
Magnesium	ppm	ASTM D5185m 0	<1	<1	0
Calcium	ppm	ASTM D5185m 0	0	0	0
Phosphorus	ppm	ASTM D5185m 0	<1	13	<1
Zinc	ppm	ASTM D5185m 0	0	0	0
Sulfur	ppm	ASTM D5185m 0	0	0	0

CONTAMINANTS

	method	limit/base	current	history1	history2
Silicon	ppm	ASTM D5185m >25	0	0	<1
Sodium	ppm	ASTM D5185m	2	0	0
Potassium	ppm	ASTM D5185m >20	2	0	<1
Water	%	ASTM D6304 >0.6	0.009	0.007	0.005
ppm Water	ppm	ASTM D6304 >6000	93	72.8	59.8

FLUID CLEANLINESS

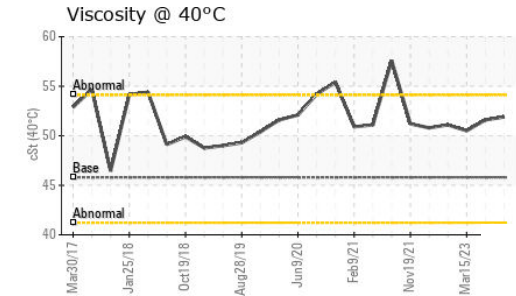
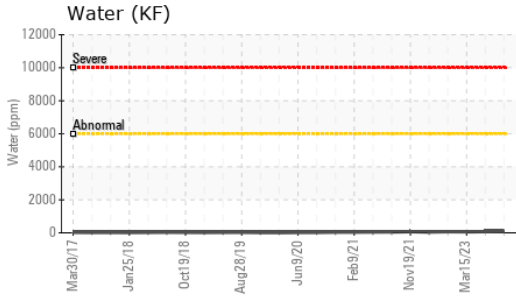
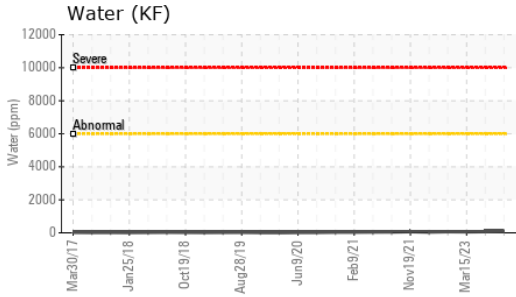
	method	limit/base	current	history1	history2
Particles >4µm	ASTM D7647	>10000	---	---	---
Particles >6µm	ASTM D7647	>2500	---	---	---
Particles >14µm	ASTM D7647	>320	---	---	---
Particles >21µm	ASTM D7647	>80	---	---	---
Particles >38µm	ASTM D7647	>20	---	---	---
Particles >71µm	ASTM D7647	>4	---	---	---
Oil Cleanliness	ISO 4406 (c)	>20/18/15	---	---	---

FLUID DEGRADATION

	method	limit/base	current	history1	history2
Acid Number (AN)	mg KOH/g	ASTM D8045 0.16	0.41	0.34	0.21



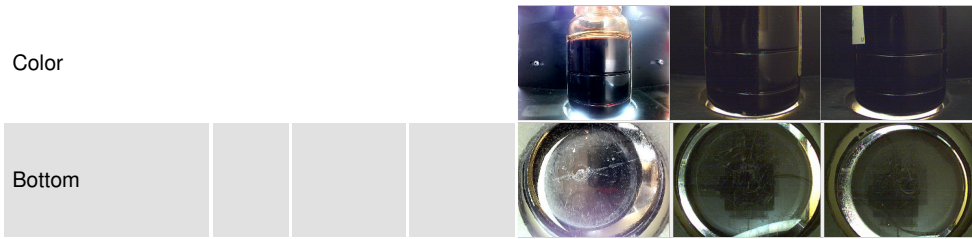
OIL ANALYSIS REPORT



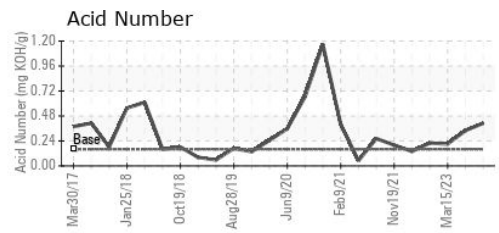
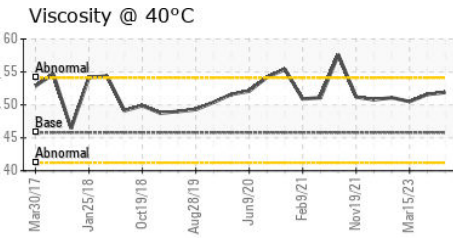
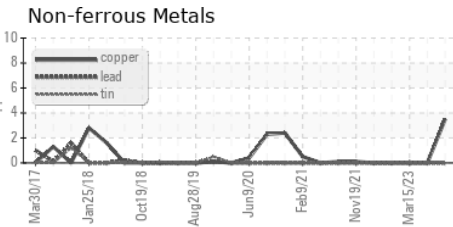
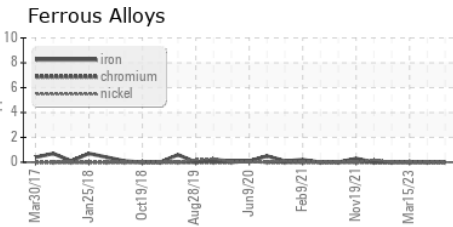
VISUAL	method	limit/base	current	history1	history2
White Metal	scalar	*Visual	NONE	NONE	NONE
Yellow Metal	scalar	*Visual	NONE	NONE	NONE
Precipitate	scalar	*Visual	NONE	NONE	NONE
Silt	scalar	*Visual	▲ MODER	▲ MODER	▲ MODER
Debris	scalar	*Visual	NONE	NONE	NONE
Sand/Dirt	scalar	*Visual	NONE	NONE	NONE
Appearance	scalar	*Visual	NORML	NORML	NORML
Odor	scalar	*Visual	NORML	NORML	NORML
Emulsified Water	scalar	*Visual	>0.6	NEG	NEG
Free Water	scalar	*Visual	NEG	NEG	NEG

FLUID PROPERTIES	method	limit/base	current	history1	history2
Visc @ 40°C	cSt	ASTM D445	45.8	51.9	51.6

SAMPLE IMAGES	method	limit/base	current	history1	history2
---------------	--------	------------	---------	----------	----------



GRAPHS



Certificate L2367

Laboratory : WearCheck USA - 501 Madison Ave., Cary, NC 27513
Sample No. : USPM31927
Lab Number : 06026470
Unique Number : 10776261
Test Package : IND 2

TYSON-Emporia-USP
 2101 West Sixth
 Emporia, KS
 US 66801
 Contact: SERVICE MANAGER

To discuss this sample report, contact Customer Service at 1-800-237-1369.

* - Denotes test methods that are outside of the ISO 17025 scope of accreditation.

Statements of conformity to specifications are based on the simple acceptance decision rule (JCGM 106:2012)

T: (620)343-3640

F: (620)340-1253