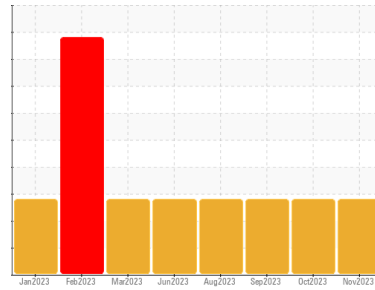




COOLANT REPORT

Sample Rating Trend



OFF SPEC



Area
West Virginia
 Machine Id
[West Virginia] Coolant - Port Genset
 Component
Coolant
 Fluid
CAT EXTENDED LIFE COOLANT (ELC) (--- GAL)

DIAGNOSIS

Recommendation

We recommend that you perform a partial drain and top off with straight antifreeze to increase level of glycol.

Corrosion

All metal levels are normal indicating no corrosion in the cooling system.

Contaminants

There is no indication of any contamination in the coolant.

Coolant Condition

The glycol level is lower than acceptable. The pH level of this fluid is within the acceptable limits.

SAMPLE INFORMATION

method	limit/base	current	history1	history2	
Sample Number	Client Info	WC0846124	WC0805458	WC0805329	
Sample Date	Client Info	27 Nov 2023	27 Oct 2023	02 Sep 2023	
Machine Age	hrs	Client Info	26539	26183	0
Oil Age	hrs	Client Info	0	0	0
Oil Changed	Client Info	N/A	N/A	N/A	
Sample Status		ABNORMAL	ABNORMAL	ABNORMAL	

PHYSICAL TEST RESULTS

method	limit/base	current	history1	history2
Specific Gravity	*ASTM D1298	1.026	1.022	1.019
pH	Scale 0-14 ASTM D1287	8.49	8.39	8.49
Nitrites	ppm AP-053:2009	300	600	336
Reserve Alkalinity	Scale 0-20 *ASTM D1121	---	---	---
Percentage Glycol	% ASTM D3321	▲ 20.5	▲ 17.7	▲ 15.9
Freezing Point	°F ASTM D3321	16	19	21
Total Dissolved Solids		126.0	114.5	107.5
Carboxylate		fail	fail	fail

CORROSION INHIBITORS

method	limit/base	current	history1	history2	
Silicon	ppm ASTM D6130	0	89	4	5
Phosphorus	ppm ASTM D6130	0	0	<1	0
Boron	ppm ASTM D6130	0	0	0	3
Molybdenum	ppm ASTM D6130	950	133	122	183

CORROSION

method	limit/base	current	history1	history2	
Iron	ppm ASTM D6130	>15	0	1	<1
Aluminum	ppm ASTM D6130	>10	0	0	0
Copper	ppm ASTM D6130	>10	<1	<1	<1
Lead	ppm ASTM D6130	>10	<1	0	0
Tin	ppm ASTM D6130	>10	<1	<1	0
Zinc	ppm ASTM D6130		0	0	0

CONTAMINANTS

method	limit/base	current	history1	history2	
Chlorine	ppm ASTM D6130		20	26	51

CARRIER SALTS

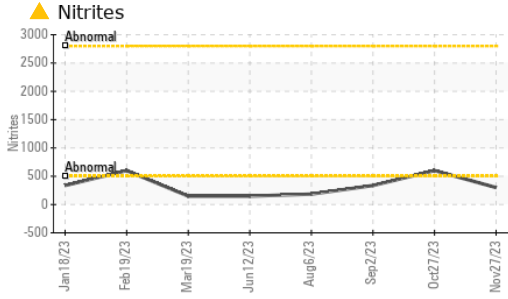
method	limit/base	current	history1	history2	
Sodium	ppm ASTM D6130		1547	1452	2554
Potassium	ppm ASTM D6130		30	32	73

SCALE POTENTIAL

method	limit/base	current	history1	history2	
Calcium	ppm ASTM D6130		5	8	18
Magnesium	ppm ASTM D6130		2	3	5

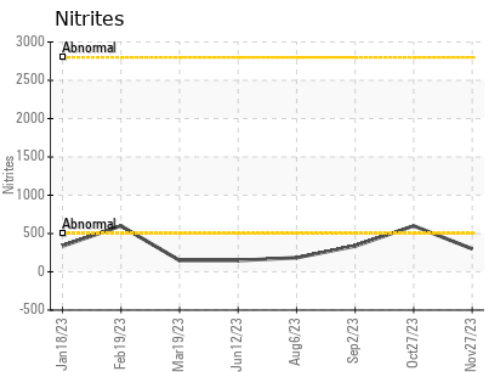
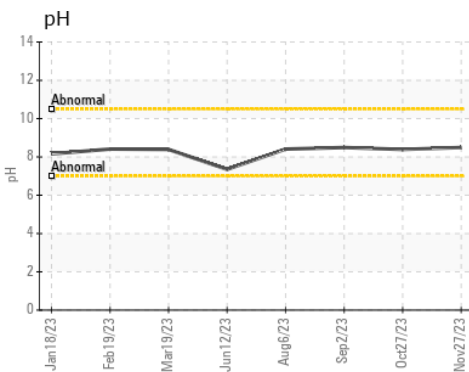
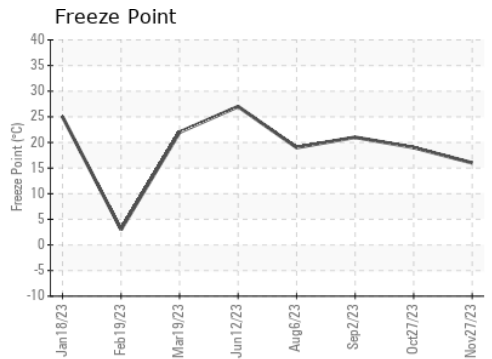
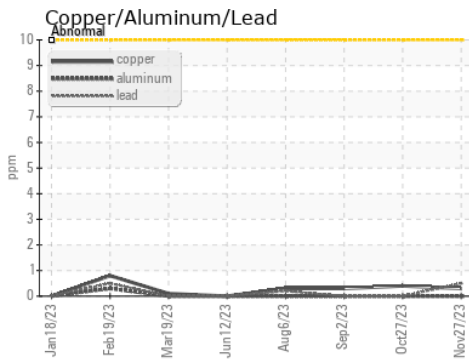
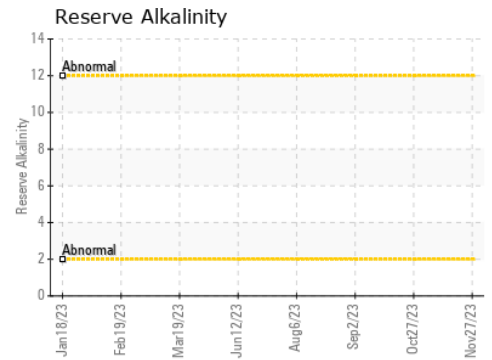
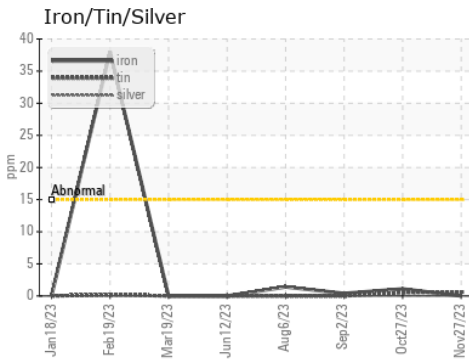


COOLANT REPORT



VISUAL	method	limit/base	current	history1	history2
Coolant Color	*Visual		Pink	Pink	Pink
Coolant Appearance	*Visual	Clear	normal	normal	normal
Color					
Bottom					

GRAPHS



Certificate L2367

Laboratory : WearCheck USA - 501 Madison Ave., Cary, NC 27513
Sample No. : WC0846124 **Received** : 06 Dec 2023
Lab Number : 06026977 **Diagnosed** : 14 Dec 2023
Unique Number : 10776768 **Diagnostician** : Jonathan Hester
Test Package : COOL- (Additional Tests: COOL, ICP, KF)

MARATHON PETROLEUM CO.
 101 12TH ST
 CATLETTSBURG, KY
 US 41169
 Contact: SHAWN MCCLASKEY
 stmccclaskey@marathonpetroleum.com
 T: (606)739-2416
 F: x:

To discuss this sample report, contact Customer Service at 1-800-237-1369.

* - Denotes test methods that are outside of the ISO 17025 scope of accreditation.

Statements of conformity to specifications are based on the simple acceptance decision rule (JCGM 106:2012)