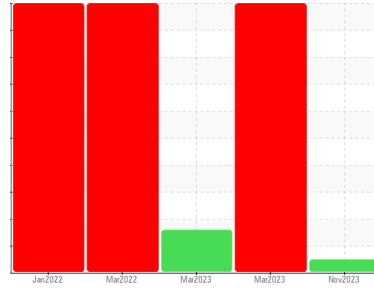




COOLANT REPORT

Sample Rating Trend



NORMAL



Area
FRONTIER II [200006776]
 Machine Id
08WEA86922
 Component
Coolant
 Fluid
ISENTHAL VARIDOS 45 (--- LTR)

DIAGNOSIS

Recommendation

The fluid is suitable for further service.

Corrosion

All metal levels are normal indicating no corrosion in the cooling system.

Contaminants

There is no indication of any contamination in the coolant.

Coolant Condition

Glycol and nitrite levels are acceptable. The pH level of this fluid is within the acceptable limits.

SAMPLE INFORMATION

	method	limit/base	current	history1	history2
Sample Number	Client Info		NX06026979	NX05818398	NX05799048
Sample Date	Client Info		27 Nov 2023	06 Mar 2023	06 Mar 2023
Machine Age	hrs	Client Info	0	0	0
Oil Age	hrs	Client Info	0	0	0
Oil Changed	Client Info		N/A	N/A	N/A
Sample Status			NORMAL	SEVERE	ABNORMAL

PHYSICAL TEST RESULTS

	method	limit/base	current	history1	history2
Specific Gravity	*ASTM D1298		1.060	1.059	1.060
pH	Scale 0-14	ASTM D1287 8.5	7.91	8.25	8.19
Nitrites	ppm	AP-053:2009 260	336	260	36
Reserve Alkalinity	Scale 0-20	*ASTM D1121	---	---	---
Percentage Glycol	%	ASTM D3321 45	44.7	43.8	44.4
Freezing Point	°F	ASTM D3321 -24	-21	-19	-21
Total Dissolved Solids			216.0	152.0	257.0
Carboxylate			n/a	fail	n/a

CORROSION INHIBITORS

	method	limit/base	current	history1	history2
Silicon	ppm	ASTM D6130 25	113	88	11
Phosphorus	ppm	ASTM D6130 140	0	137	6
Boron	ppm	ASTM D6130 0	0	14	0
Molybdenum	ppm	ASTM D6130 1075	121	1113	325

CORROSION

	method	limit/base	current	history1	history2
Iron	ppm	ASTM D6130 >15	0	511	39
Aluminum	ppm	ASTM D6130 >10	<1	174	14
Copper	ppm	ASTM D6130 >10	<1	1	<1
Lead	ppm	ASTM D6130 >10	<1	1	<1
Tin	ppm	ASTM D6130 >10	<1	<1	1
Zinc	ppm	ASTM D6130	<1	222	14

CONTAMINANTS

	method	limit/base	current	history1	history2
Chlorine	ppm	ASTM D6130	11	96	16

CARRIER SALTS

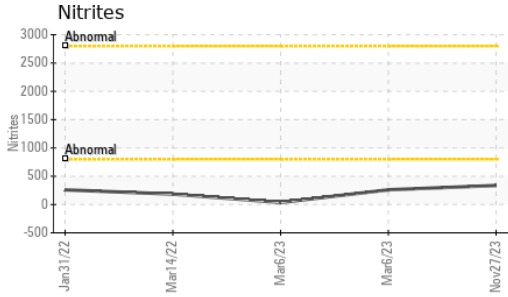
	method	limit/base	current	history1	history2
Sodium	ppm	ASTM D6130 1075	2550	1025	5664
Potassium	ppm	ASTM D6130 5	266	1728	267

SCALE POTENTIAL

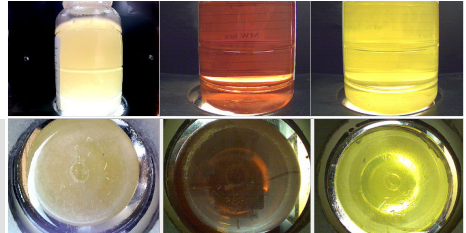
	method	limit/base	current	history1	history2
Calcium	ppm	ASTM D6130	<1	2	<1
Magnesium	ppm	ASTM D6130	<1	6	<1



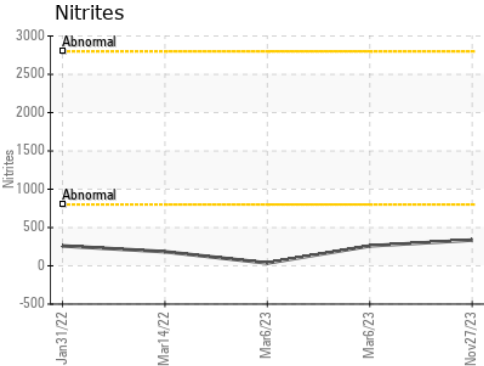
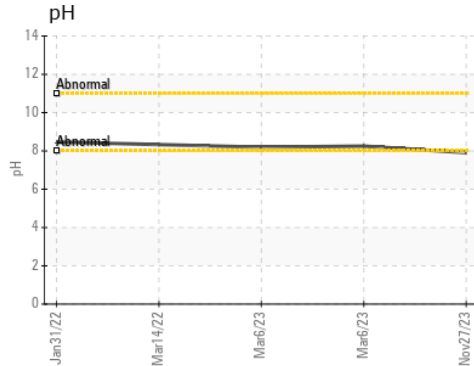
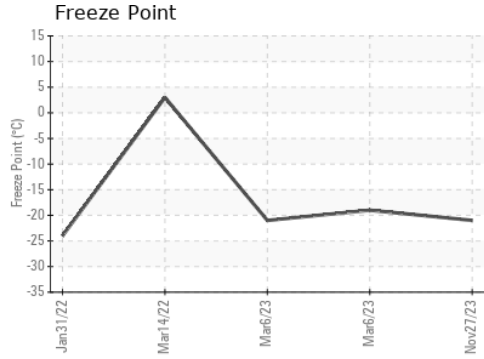
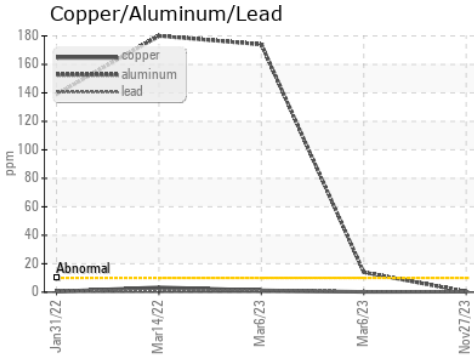
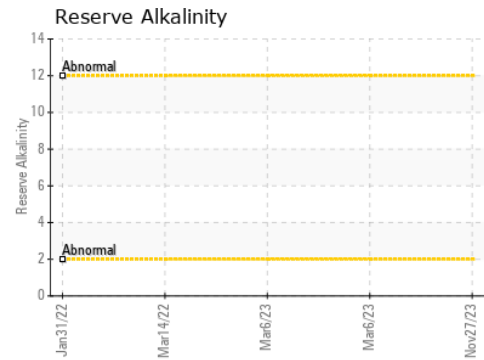
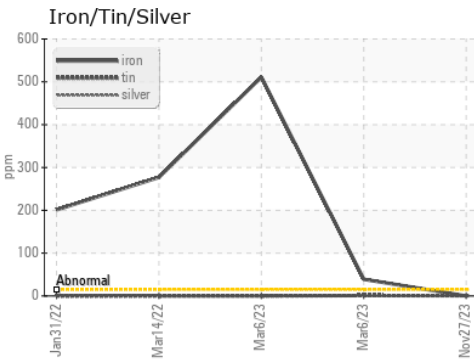
COOLANT REPORT



VISUAL	method	limit/base	current	history1	history2
Coolant Color	*Visual	DkYlw	Yllow	Yllow	Yllow
Coolant Appearance	*Visual	Clear	normal	normal	normal
Color					
Bottom					



GRAPHS



Laboratory : WearCheck USA - 501 Madison Ave., Cary, NC 27513
Sample No. : NX06026979 **Received** : 06 Dec 2023
Lab Number : 06026979 **Diagnosed** : 11 Dec 2023
Unique Number : 10776770 **Diagnostician** : Doug Bogart
Test Package : COOL- (Additional Tests: COOL, ICP)

NORDEX USA - Chicago
 300 SOUTH WACKER DRIVE, SUITE 1500
 CHICAGO, IL
 US 60606
 Contact: DEVIN LINEHAN
 DLinehan@nordex-online.com
 T: (312)386-4124
 F: (312)386-7102

Certificate L2367
 To discuss this sample report, contact Customer Service at 1-800-237-1369.
 * - Denotes test methods that are outside of the ISO 17025 scope of accreditation.
 Statements of conformity to specifications are based on the simple acceptance decision rule (JCGM 106:2012)