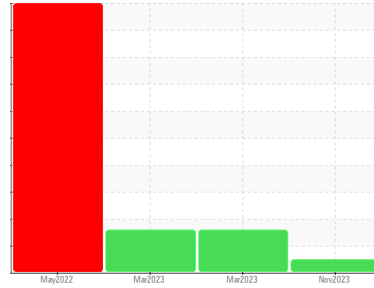




COOLANT REPORT

Sample Rating Trend



NORMAL



Area
FRONTIER II [200006776]
 Machine Id
12WEA86929
 Component
Coolant
 Fluid
ISENTHAL VARIDOS 45 (--- LTR)

DIAGNOSIS

Recommendation

The fluid is suitable for further service.

Corrosion

All metal levels are normal indicating no corrosion in the cooling system.

Contaminants

There is no indication of any contamination in the coolant.

Coolant Condition

Glycol and nitrite levels are acceptable. The pH level of this fluid is within the acceptable limits.

SAMPLE INFORMATION

	method	limit/base	current	history1	history2
Sample Number	Client Info		NX06026988	NX05818426	NX05818393
Sample Date	Client Info		27 Nov 2023	21 Mar 2023	21 Mar 2023
Machine Age	hrs	Client Info	0	0	0
Oil Age	hrs	Client Info	0	0	0
Oil Changed	Client Info		N/A	N/A	N/A
Sample Status			NORMAL	ABNORMAL	ABNORMAL

PHYSICAL TEST RESULTS

	method	limit/base	current	history1	history2
Specific Gravity	*ASTM D1298		1.062	1.059	1.058
pH	Scale 0-14 ASTM D1287	8.5	7.86	8.20	8.24
Nitrites	ppm AP-053:2009	260	412	336	260
Reserve Alkalinity	Scale 0-20 *ASTM D1121		---	---	---
Percentage Glycol	% ASTM D3321	45	45.5	43.5	43.1
Freezing Point	°F ASTM D3321	-24	-24	-19	-19
Total Dissolved Solids			236.5	155.0	150.5
Carboxylate			n/a	fail	fail

CORROSION INHIBITORS

	method	limit/base	current	history1	history2
Silicon	ppm ASTM D6130	25	29	118	108
Phosphorus	ppm ASTM D6130	140	0	93	92
Boron	ppm ASTM D6130	0	0	14	14
Molybdenum	ppm ASTM D6130	1075	127	1089	1059

CORROSION

	method	limit/base	current	history1	history2
Iron	ppm ASTM D6130	>15	0	▲ 455	▲ 331
Aluminum	ppm ASTM D6130	>10	1	▲ 239	▲ 241
Copper	ppm ASTM D6130	>10	1	1	1
Lead	ppm ASTM D6130	>10	<1	2	2
Tin	ppm ASTM D6130	>10	<1	0	0
Zinc	ppm ASTM D6130		2	201	178

CONTAMINANTS

	method	limit/base	current	history1	history2
Chlorine	ppm ASTM D6130		7	90	89

CARRIER SALTS

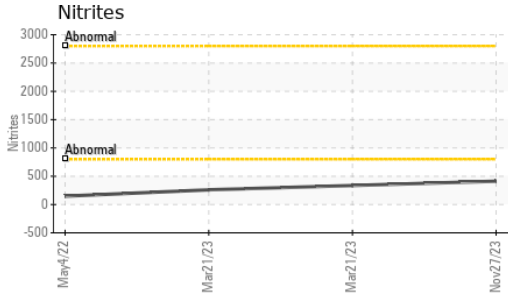
	method	limit/base	current	history1	history2
Sodium	ppm ASTM D6130	1075	2697	992	944
Potassium	ppm ASTM D6130	5	278	1643	1688

SCALE POTENTIAL

	method	limit/base	current	history1	history2
Calcium	ppm ASTM D6130		1	8	3
Magnesium	ppm ASTM D6130		<1	5	5

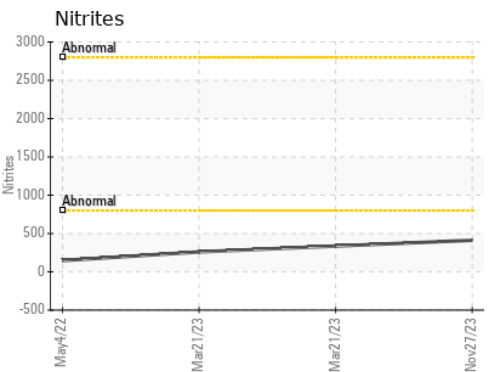
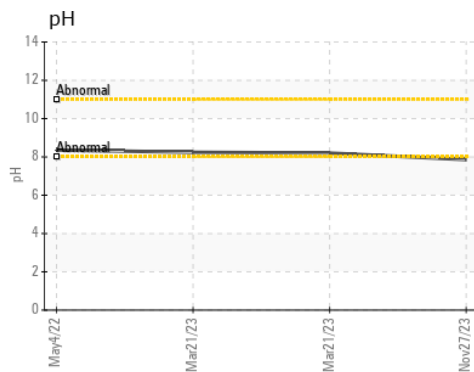
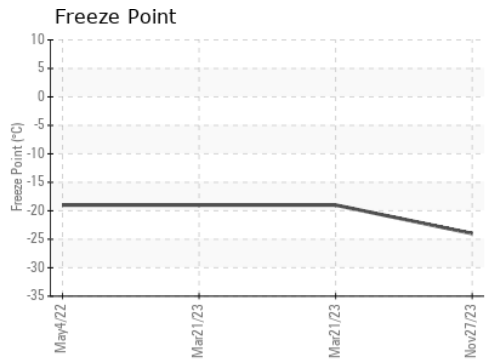
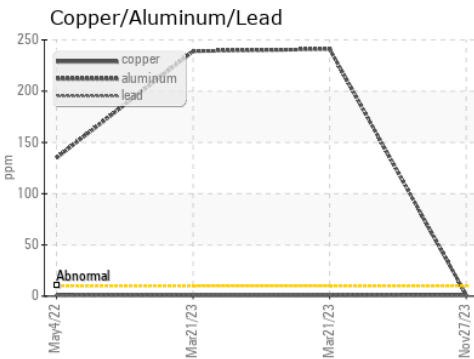
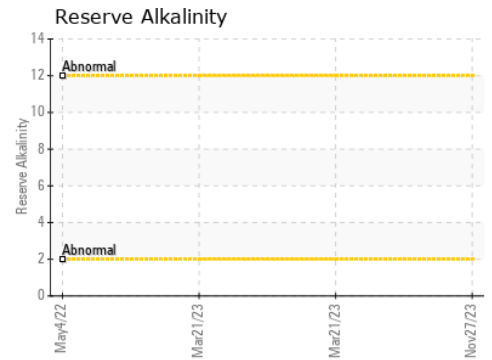
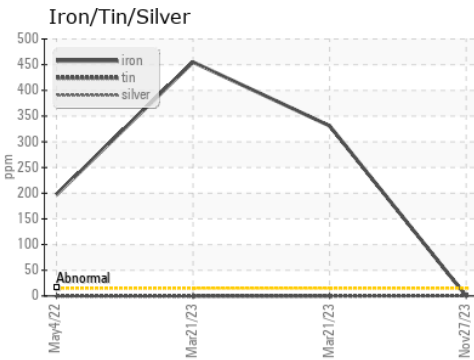


COOLANT REPORT



VISUAL	method	limit/base	current	history1	history2
Coolant Color	*Visual	DkYlw	Yllow	Yllow	Yllow
Coolant Appearance	*Visual	Clear	normal	normal	normal
Color					
Bottom					

GRAPHS



Laboratory : WearCheck USA - 501 Madison Ave., Cary, NC 27513
Sample No. : NX06026988 **Received** : 06 Dec 2023
Lab Number : 06026988 **Diagnosed** : 11 Dec 2023
Unique Number : 10776779 **Diagnostician** : Doug Bogart
Test Package : COOL- (Additional Tests: COOL, ICP)

NORDEX USA - Chicago
 300 SOUTH WACKER DRIVE, SUITE 1500
 CHICAGO, IL
 US 60606
 Contact: DEVIN LINEHAN
 DLinehan@nordex-online.com
 T: (312)386-4124
 F: (312)386-7102

Certificate L2367
 To discuss this sample report, contact Customer Service at 1-800-237-1369.
 * - Denotes test methods that are outside of the ISO 17025 scope of accreditation.
 Statements of conformity to specifications are based on the simple acceptance decision rule (JCGM 106:2012)