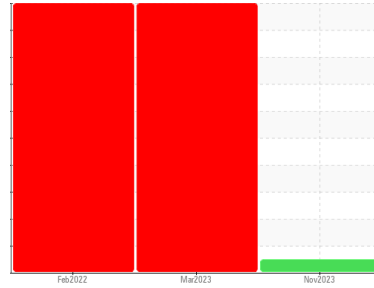




# COOLANT REPORT

Sample Rating Trend



**NORMAL**



Area  
**FRONTIER II [200006776]**  
 Machine Id  
**16WEA86916**  
 Component  
**Coolant**  
 Fluid  
**ISENTHAL VARIDOS 45 (--- LTR)**

## DIAGNOSIS

### Recommendation

The fluid is suitable for further service.

### Corrosion

All metal levels are normal indicating no corrosion in the cooling system.

### Contaminants

There is no indication of any contamination in the coolant.

### Coolant Condition

Glycol and nitrite levels are acceptable. The pH level of this fluid is within the acceptable limits.

## SAMPLE INFORMATION

	method	limit/base	current	history1	history2
Sample Number	Client Info		<b>NX06026990</b>	NX05818431	NX05471851
Sample Date	Client Info		<b>28 Nov 2023</b>	23 Mar 2023	05 Feb 2022
Machine Age	hrs	Client Info	<b>0</b>	0	0
Oil Age	hrs	Client Info	<b>0</b>	0	0
Oil Changed	Client Info		<b>N/A</b>	N/A	N/A
Sample Status			<b>NORMAL</b>	SEVERE	SEVERE

## PHYSICAL TEST RESULTS

	method	limit/base	current	history1	history2
Specific Gravity	*ASTM D1298		<b>1.060</b>	1.060	---
pH	Scale 0-14	ASTM D1287 8.5	<b>7.68</b>	8.16	8.44
Nitrites	ppm	AP-053:2009 260	<b>560</b>	372	260
Reserve Alkalinity	Scale 0-20	*ASTM D1121	<b>---</b>	---	---
Percentage Glycol	%	ASTM D3321 45	<b>44.9</b>	44.1	44
Freezing Point	°F	ASTM D3321 -24	<b>-21</b>	-21	-23
Total Dissolved Solids			<b>338.0</b>	153.5	158.0
Carboxylate			<b>n/a</b>	fail	fail

## CORROSION INHIBITORS

	method	limit/base	current	history1	history2
Silicon	ppm	ASTM D6130 25	<b>28</b>	105	67
Phosphorus	ppm	ASTM D6130 140	<b>0</b>	153	84
Boron	ppm	ASTM D6130 0	<b>0</b>	15	1
Molybdenum	ppm	ASTM D6130 1075	<b>129</b>	1086	874

## CORROSION

	method	limit/base	current	history1	history2
Iron	ppm	ASTM D6130 >15	<b>0</b>	616	325
Aluminum	ppm	ASTM D6130 >10	<b>&lt;1</b>	172	116
Copper	ppm	ASTM D6130 >10	<b>29</b>	1	<1
Lead	ppm	ASTM D6130 >10	<b>&lt;1</b>	2	<1
Tin	ppm	ASTM D6130 >10	<b>&lt;1</b>	0	0
Zinc	ppm	ASTM D6130	<b>13</b>	211	77

## CONTAMINANTS

	method	limit/base	current	history1	history2
Chlorine	ppm	ASTM D6130	<b>8</b>	97	74

## CARRIER SALTS

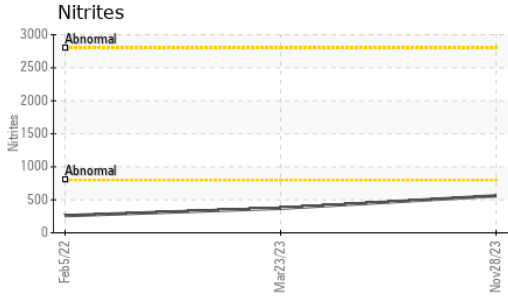
	method	limit/base	current	history1	history2
Sodium	ppm	ASTM D6130 1075	<b>2678</b>	994	490
Potassium	ppm	ASTM D6130 5	<b>298</b>	1663	493

## SCALE POTENTIAL

	method	limit/base	current	history1	history2
Calcium	ppm	ASTM D6130	<b>1</b>	3	2
Magnesium	ppm	ASTM D6130	<b>&lt;1</b>	5	4

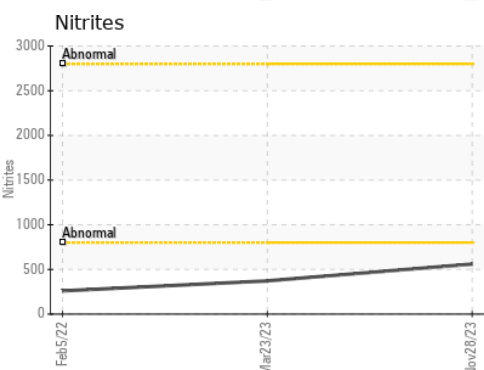
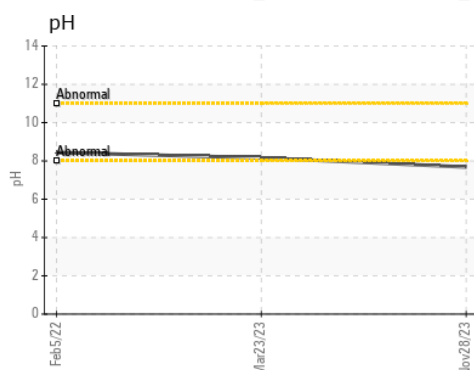
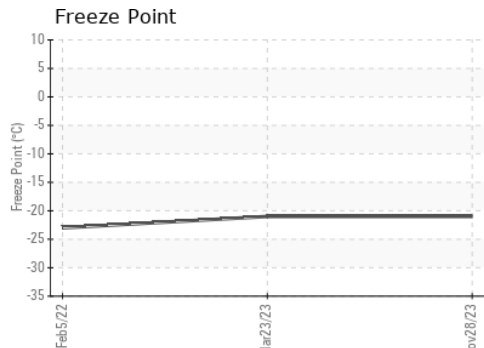
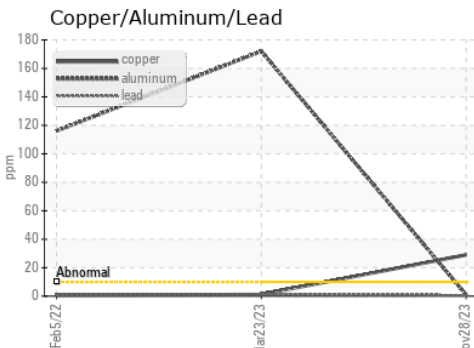
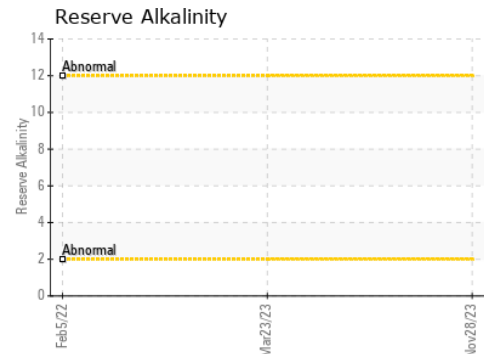
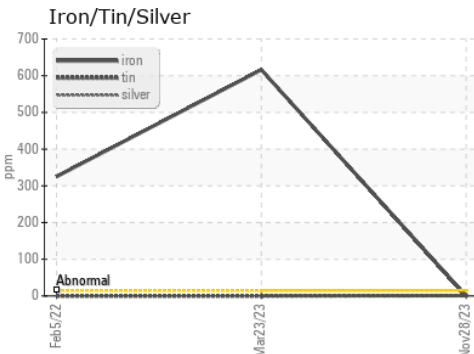


# COOLANT REPORT



VISUAL	method	limit/base	current	history1	history2
Coolant Color	*Visual	DkYlw	<b>Yllow</b>	Yllow	Yllow
Coolant Appearance	*Visual	Clear	<b>normal</b>	normal	normal
Color					
Bottom					

## GRAPHS



**Laboratory** : WearCheck USA - 501 Madison Ave., Cary, NC 27513  
**Sample No.** : NX06026990    **Received** : 06 Dec 2023  
**Lab Number** : 06026990    **Diagnosed** : 11 Dec 2023  
**Unique Number** : 10776781    **Diagnostician** : Doug Bogart  
**Test Package** : COOL- ( Additional Tests: COOL, ICP )

**NORDEX USA - Chicago**  
 300 SOUTH WACKER DRIVE, SUITE 1500  
 CHICAGO, IL  
 US 60606  
 Contact: DEVIN LINEHAN  
 DLinehan@nordex-online.com  
 T: (312)386-4124  
 F: (312)386-7102

To discuss this sample report, contact Customer Service at 1-800-237-1369.  
 \* - Denotes test methods that are outside of the ISO 17025 scope of accreditation.  
 Statements of conformity to specifications are based on the simple acceptance decision rule (JCGM 106:2012)