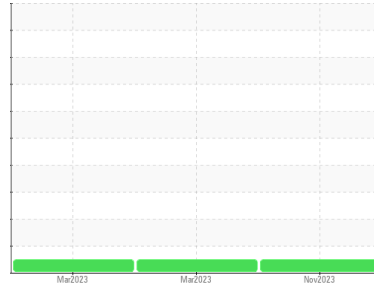




COOLANT REPORT

Sample Rating Trend

NORMAL



Area
FRONTIER II [200006776]
 Machine Id
18WEA86917
 Component
Coolant
 Fluid
CLARIANT ANTIFROGEN N (--- LTR)

DIAGNOSIS

Recommendation

The fluid is suitable for further service.

Corrosion

All metal levels are normal indicating no corrosion in the cooling system.

Contaminants

There is no indication of any contamination in the coolant.

Coolant Condition

Glycol and nitrite levels are acceptable. The pH level of this fluid is within the acceptable limits.

SAMPLE INFORMATION

	method	limit/base	current	history1	history2
Sample Number	Client Info		NX06026992	NX05818432	NX05818389
Sample Date	Client Info		28 Nov 2023	28 Mar 2023	25 Mar 2023
Machine Age	hrs	Client Info	0	0	0
Oil Age	hrs	Client Info	0	0	0
Oil Changed	Client Info		N/A	N/A	N/A
Sample Status			NORMAL	NORMAL	NORMAL

PHYSICAL TEST RESULTS

	method	limit/base	current	history1	history2	
Specific Gravity	*ASTM D1298	1.11	1.059	1.059	1.059	
pH	Scale 0-14	ASTM D1287	8.5	7.79	8.19	8.14
Nitrites	ppm	AP-053:2009		488	72	72
Reserve Alkalinity	Scale 0-20	*ASTM D1121	4.0	---	---	---
Percentage Glycol	%	ASTM D3321	44	43.8	43.4	43.2
Freezing Point	°F	ASTM D3321	-32	-19	-19	-19
Total Dissolved Solids				234.5	241.5	250.5
Carboxylate				n/a	fail	fail

CORROSION INHIBITORS

	method	limit/base	current	history1	history2	
Silicon	ppm	ASTM D6130	3	19	22	16
Phosphorus	ppm	ASTM D6130	5	0	11	8
Boron	ppm	ASTM D6130	15	0	12	12
Molybdenum	ppm	ASTM D6130	110	127	350	278

CORROSION

	method	limit/base	current	history1	history2	
Iron	ppm	ASTM D6130	>15	0	51	42
Aluminum	ppm	ASTM D6130	>10	2	38	14
Copper	ppm	ASTM D6130	>10	<1	<1	<1
Lead	ppm	ASTM D6130	>10	<1	<1	<1
Tin	ppm	ASTM D6130	>10	<1	0	0
Zinc	ppm	ASTM D6130		1	25	12

CONTAMINANTS

	method	limit/base	current	history1	history2	
Chlorine	ppm	ASTM D6130		13	25	21

CARRIER SALTS

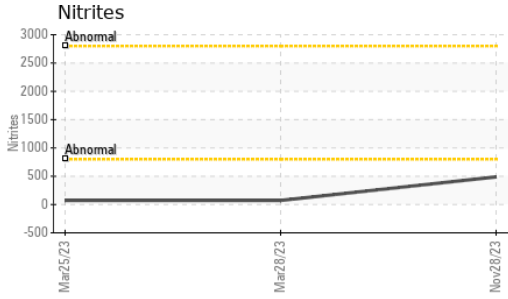
	method	limit/base	current	history1	history2	
Sodium	ppm	ASTM D6130	2400	2585	4531	4732
Potassium	ppm	ASTM D6130	5	317	474	214

SCALE POTENTIAL

	method	limit/base	current	history1	history2	
Calcium	ppm	ASTM D6130		2	15	18
Magnesium	ppm	ASTM D6130		1	5	5

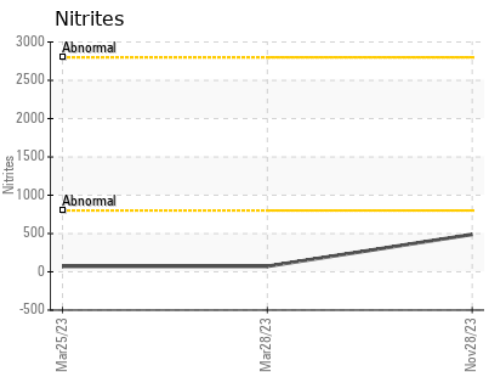
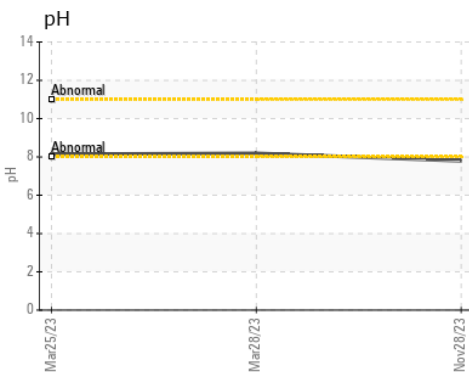
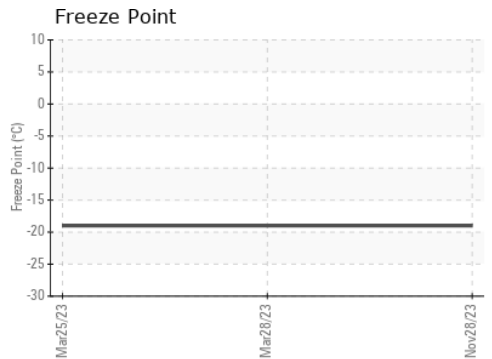
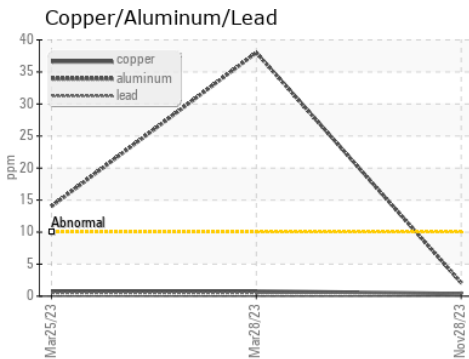
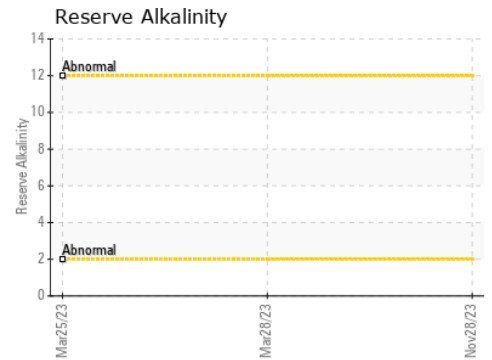
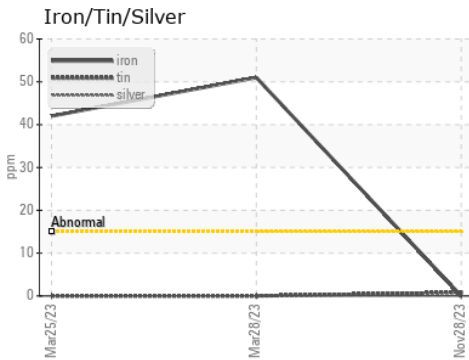


COOLANT REPORT



VISUAL	method	limit/base	current	history1	history2
Coolant Color	*Visual	Yellow	Yllow	Yellow	Yellow
Coolant Appearance	*Visual	Clear	normal	normal	normal
Color					
Bottom					

GRAPHS



Certificate L2367

Laboratory : WearCheck USA - 501 Madison Ave., Cary, NC 27513
Sample No. : NX06026992 **Received** : 06 Dec 2023
Lab Number : 06026992 **Diagnosed** : 11 Dec 2023
Unique Number : 10776783 **Diagnostician** : Doug Bogart
Test Package : COOL- (Additional Tests: COOL, ICP)

NORDEX USA - Chicago
 300 SOUTH WACKER DRIVE, SUITE 1500
 CHICAGO, IL
 US 60606
 Contact: DEVIN LINEHAN
 DLinehan@nordex-online.com
 T: (312)386-4124
 F: (312)386-7102

To discuss this sample report, contact Customer Service at 1-800-237-1369.

* - Denotes test methods that are outside of the ISO 17025 scope of accreditation.

Statements of conformity to specifications are based on the simple acceptance decision rule (JCGM 106:2012)