



# FILTER DEBRIS ANALYSIS

Sample Rating Trend



**NORMAL**



Machine Id  
**CML 1 RETURN FILTER**  
 Component  
**Filter**  
 Fluid  
**NOT GIVEN (--- GAL)**

## DIAGNOSIS

**Recommendation**  
 Resample at the next service interval to monitor. All tests and evaluation performed at performed at WearCheck Canada.

**Wear Particles**  
 The filter contained no appreciable wear particles. All filter wear levels are normal.

**Contaminants**  
 The filter contained only normal levels of contaminants, and debris. All filter contaminant levels are normal.

## SAMPLE INFORMATION

	method	limit/base	current	history1	history2
Sample Number	Client Info		<b>WC06027287</b>	---	---
Sample Date	Client Info		<b>06 Dec 2023</b>	---	---
Machine Age	wks Client Info		<b>0</b>	---	---
Oil Age	wks Client Info		<b>0</b>	---	---
Oil Changed	Client Info		<b>N/A</b>	---	---
Sample Status			<b>NORMAL</b>	---	---

## CONTAMINATION

	method	limit/base	current	history1	history2
Water	WC Method		<b>NEG</b>	---	---

## FILTER WEAR PARTICLES

	method	limit/base	current	history1	history2
Ferrous Rubbing	Scale 0-10 *ASTM D7684		<b>1</b>		
Ferrous Sliding	Scale 0-10 *ASTM D7684				
Ferrous Cutting	Scale 0-10 *ASTM D7684				
Ferrous Rolling	Scale 0-10 *ASTM D7684				
Ferrous Break-in	Scale 0-10 *ASTM D7684				
Ferrous Spheres	Scale 0-10 *ASTM D7684				
Ferrous Black Oxides	Scale 0-10 *ASTM D7684				
Ferrous Red Oxides	Scale 0-10 *ASTM D7684				
Ferrous Corrosive	Scale 0-10 *ASTM D7684				
Ferrous Other	Scale 0-10 *ASTM D7684				
Nonferrous Rubbing	Scale 0-10 *ASTM D7684				
Nonferrous Sliding	Scale 0-10 *ASTM D7684				
Nonferrous Cutting	Scale 0-10 *ASTM D7684				
Nonferrous Rolling	Scale 0-10 *ASTM D7684				
Nonferrous Other	Scale 0-10 *ASTM D7684				

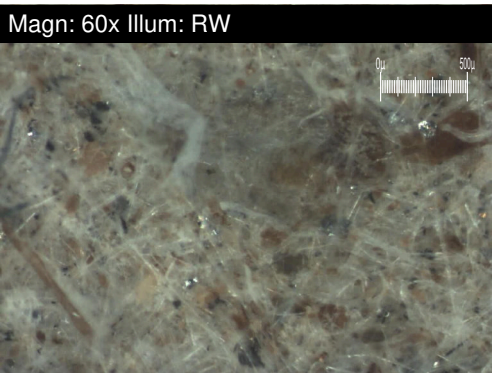
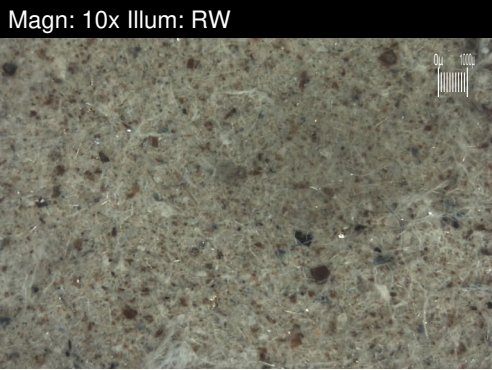
## FILTER CONTAMINANTS

	method	limit/base	current	history1	history2
Sand/Dirt	Scale 0-10 ASTM D7684		<b>1</b>		
Fibres	Scale 0-10 *ASTM D7684		<b>1</b>		
Spheres	Scale 0-10 *ASTM D7684				
Other	Scale 0-10 *ASTM D7684		<b>1</b>		
Patch Weight	mg *ASTM D7684		<b>36</b>	---	---

## SAMPLE IMAGES

	method	limit/base	current	history1	history2
Color				<i>no image</i>	<i>no image</i>
Bottom				<i>no image</i>	<i>no image</i>

Machine Id  
**CML 1 RETURN FILTER**  
Component  
**Filter**  
Fluid  
**NOT GIVEN (--- GAL)**



## WEAR

The filter contained no appreciable wear particles. All filter wear levels are normal.