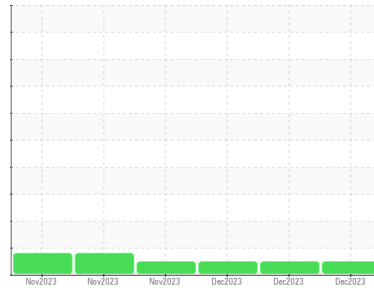




# OIL ANALYSIS REPORT

Sample Rating Trend



**NORMAL**



Area  
**GUAY SON [CONHER]**  
 Machine Id  
**PISA 4 SH - Pacifico Industrial**  
 Component  
**Hydraulic System**  
 Fluid  
**ISO 68 (1000 LTR)**

## DIAGNOSIS

### Recommendation

Resample at the next service interval to monitor. (after 6 hours of Kleenoil filtration). ( Customer Sample Comment: After 6 hours of Kleenoil filtration )

### Wear

All component wear rates are normal.

### Contamination

The amount and size of particulates present in the system are acceptable. There is no indication of any contamination in the oil.

### Fluid Condition

The AN level is acceptable for this fluid. The condition of the oil is suitable for further service.

## SAMPLE INFORMATION

method	limit/base	current	history1	history2
Sample Number	Client Info	<b>KL0013438</b>	KL0013439	KL0013440
Sample Date	Client Info	<b>01 Dec 2023</b>	01 Dec 2023	01 Dec 2023
Machine Age	mths Client Info	<b>0</b>	0	0
Oil Age	mths Client Info	<b>24</b>	24	24
Oil Changed	Client Info	<b>Not Chngd</b>	Not Chngd	Not Chngd
Sample Status		<b>NORMAL</b>	---	NORMAL

## CONTAMINATION

method	limit/base	current	history1	history2
Water	WC Method >0.1	<b>NEG</b>	NEG	NEG

## WEAR METALS

method	limit/base	current	history1	history2
Iron	ppm ASTM D5185m >20	<b>&lt;1</b>	5	2
Chromium	ppm ASTM D5185m >10	<b>0</b>	0	0
Nickel	ppm ASTM D5185m >10	<b>0</b>	0	0
Titanium	ppm ASTM D5185m	<b>0</b>	0	0
Silver	ppm ASTM D5185m	<b>0</b>	0	0
Aluminum	ppm ASTM D5185m >10	<b>0</b>	0	0
Lead	ppm ASTM D5185m >10	<b>0</b>	0	0
Copper	ppm ASTM D5185m >75	<b>4</b>	4	4
Tin	ppm ASTM D5185m >10	<b>0</b>	0	0
Vanadium	ppm ASTM D5185m	<b>0</b>	0	0
Cadmium	ppm ASTM D5185m	<b>0</b>	0	0

## ADDITIVES

method	limit/base	current	history1	history2
Boron	ppm ASTM D5185m	<b>0</b>	0	0
Barium	ppm ASTM D5185m	<b>0</b>	0	0
Molybdenum	ppm ASTM D5185m	<b>0</b>	0	0
Manganese	ppm ASTM D5185m	<b>&lt;1</b>	<1	<1
Magnesium	ppm ASTM D5185m	<b>&lt;1</b>	3	2
Calcium	ppm ASTM D5185m	<b>18</b>	20	21
Phosphorus	ppm ASTM D5185m	<b>321</b>	329	319
Zinc	ppm ASTM D5185m	<b>371</b>	388	373
Sulfur	ppm ASTM D5185m	<b>1483</b>	1532	1475

## CONTAMINANTS

method	limit/base	current	history1	history2
Silicon	ppm ASTM D5185m >20	<b>1</b>	1	1
Sodium	ppm ASTM D5185m	<b>2</b>	11	4
Potassium	ppm ASTM D5185m >20	<b>0</b>	<1	<1

## FLUID CLEANLINESS

method	limit/base	current	history1	history2
Particles >4µm	ASTM D7647	<b>1889</b>	---	14971
Particles >6µm	ASTM D7647 >1300	<b>203</b>	---	1207
Particles >14µm	ASTM D7647 >160	<b>11</b>	---	20
Particles >21µm	ASTM D7647 >40	<b>3</b>	---	4
Particles >38µm	ASTM D7647 >10	<b>0</b>	---	1
Particles >71µm	ASTM D7647 >3	<b>0</b>	---	0
Oil Cleanliness	ISO 4406 (c) >17/14	<b>15/11</b>	---	17/11

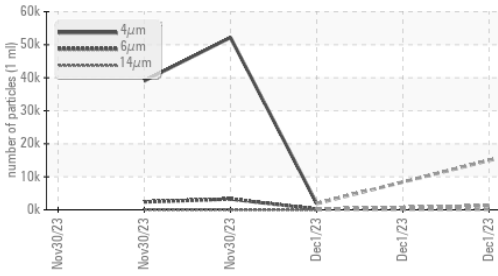
## FLUID DEGRADATION

method	limit/base	current	history1	history2
Acid Number (AN)	mg KOH/g ASTM D8045	<b>0.24</b>	0.27	0.29

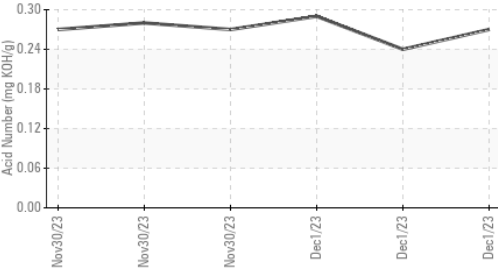


# OIL ANALYSIS REPORT

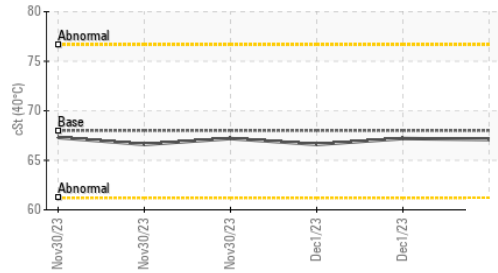
Particle Trend



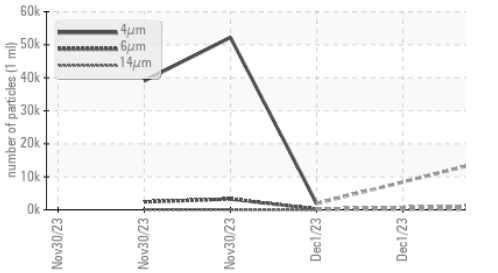
Acid Number



Viscosity @ 40°C



Particle Trend



VISUAL	method	limit/base	current	history1	history2
White Metal	scalar	*Visual	NONE	NONE	NONE
Yellow Metal	scalar	*Visual	NONE	NONE	NONE
Precipitate	scalar	*Visual	NONE	NONE	NONE
Silt	scalar	*Visual	NONE	NONE	NONE
Debris	scalar	*Visual	NONE	NONE	NONE
Sand/Dirt	scalar	*Visual	NONE	NONE	NONE
Appearance	scalar	*Visual	NORML	NORML	NORML
Odor	scalar	*Visual	NORML	NORML	NORML
Emulsified Water	scalar	*Visual	>0.1	NEG	0.2%
Free Water	scalar	*Visual		NEG	NEG

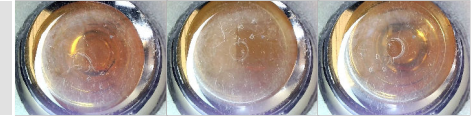
FLUID PROPERTIES	method	limit/base	current	history1	history2
Visc @ 40°C	cSt	ASTM D445	68.0	67.2	67.1

SAMPLE IMAGES	method	limit/base	current	history1	history2
---------------	--------	------------	---------	----------	----------

Color

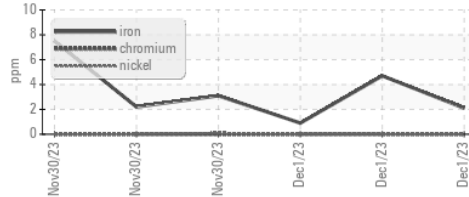


Bottom

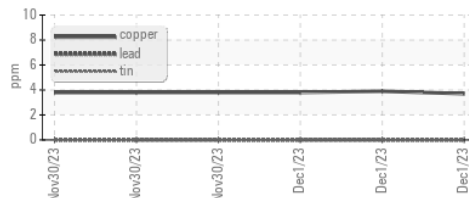


## GRAPHS

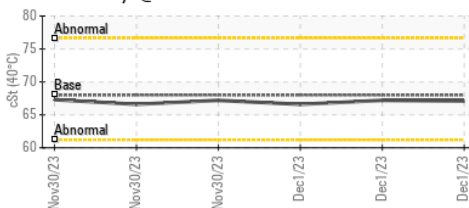
Ferrous Alloys



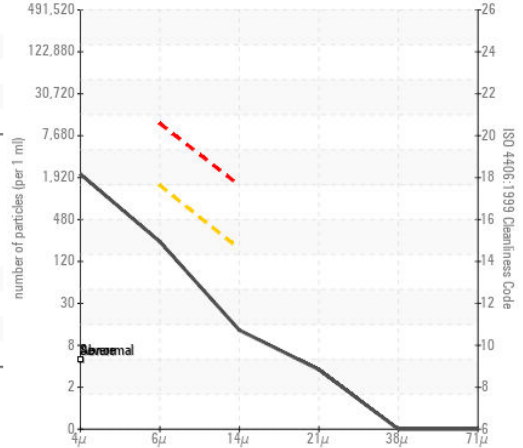
Non-ferrous Metals



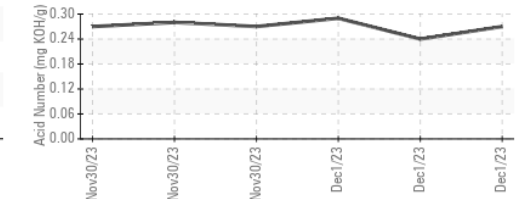
Viscosity @ 40°C



Particle Count



Acid Number



Certificate L2367

Laboratory : WearCheck USA - 501 Madison Ave., Cary, NC 27513  
 Sample No. : KL0013438  
 Lab Number : 06028644  
 Unique Number : 10778435  
 Test Package : MOB 2  
 Received : 07 Dec 2023  
 Diagnosed : 11 Dec 2023  
 Diagnostician : Don Baldrige

To discuss this sample report, contact Customer Service at 1-800-237-1369.

\* - Denotes test methods that are outside of the ISO 17025 scope of accreditation.

Statements of conformity to specifications are based on the simple acceptance decision rule (JCGM 106:2012)

**CONOR**  
 JUAREZ 348  
 HERMOSILLO,  
 MX 83140

Contact: EDUARDO GARCIA  
 egarcia.comsa@gmail.com

T: (526)622-1581 x:81

F: x: