



PROBLEM SUMMARY

Sample Rating Trend



ISO



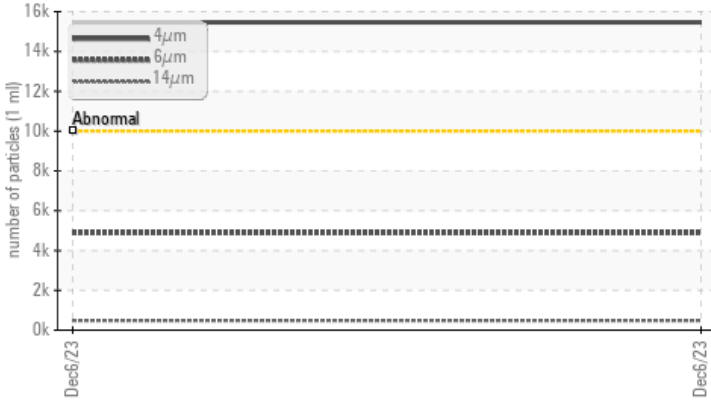
Machine Id
YOUTI YV-500 E&C

Component
Hydraulic System

Fluid
MOBIL DTE ULTRA 24 ISO 32 (--- GAL)

COMPONENT CONDITION SUMMARY

▲ Particle Trend



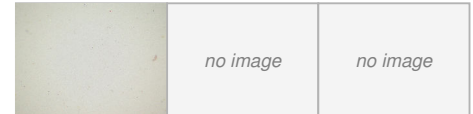
RECOMMENDATION

No corrective action is recommended at this time.
Resample at the next service interval to monitor.

PROBLEMATIC TEST RESULTS

Sample Status				ATTENTION	---	---
Particles >4µm	ASTM D7647	>10000	▲ 15463	---	---	---
Particles >6µm	ASTM D7647	>2500	▲ 4888	---	---	---
Particles >14µm	ASTM D7647	>320	▲ 480	---	---	---
Particles >21µm	ASTM D7647	>80	▲ 129	---	---	---
Oil Cleanliness	ISO 4406 (c)	>20/18/15	▲ 21/19/16	---	---	---

PrtFilter



Customer Id: LINORA
Sample No.: PH0003678
Lab Number: 06029984
Test Package: PLANT



To manage this report scan the QR code

To discuss the diagnosis or test data:
Jonathan Hester +1 919-379-4092 x4092
jhester@wearcheckusa.com

To change component or sample information:
Customer Service +1 1-800-237-1369
customerservice@wearcheck.com

RECOMMENDED ACTIONS

There are no recommended actions for this sample.

HISTORICAL DIAGNOSIS



OIL ANALYSIS REPORT

Sample Rating Trend



ISO



Machine Id
YOUTI YV-500 E&C

Component
Hydraulic System

Fluid
MOBIL DTE ULTRA 24 ISO 32 (--- GAL)

DIAGNOSIS

▲ Recommendation

No corrective action is recommended at this time. Resample at the next service interval to monitor.

Wear

All component wear rates are normal.

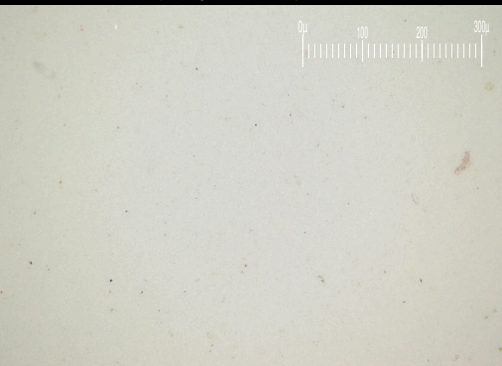
▲ Contamination

There is a moderate amount of particulates present in the oil.

Fluid Condition

The AN level is acceptable for this fluid. The condition of the oil is suitable for further service.

Particle Filter (Magn: 200 x)



SAMPLE INFORMATION

method	limit/base	current	history1	history2
Sample Number	Client Info	PH0003678	---	---
Sample Date	Client Info	06 Dec 2023	---	---
Machine Age	yrs Client Info	0	---	---
Oil Age	yrs Client Info	1	---	---
Oil Changed	Client Info	N/A	---	---
Sample Status		ATTENTION	---	---

CONTAMINATION

method	limit/base	current	history1	history2
Water	WC Method >0.05	NEG	---	---

WEAR METALS

method	limit/base	current	history1	history2
Iron	ppm ASTM D5185m >20	0	---	---
Chromium	ppm ASTM D5185m >20	0	---	---
Nickel	ppm ASTM D5185m >20	0	---	---
Titanium	ppm ASTM D5185m	<1	---	---
Silver	ppm ASTM D5185m	0	---	---
Aluminum	ppm ASTM D5185m >20	0	---	---
Lead	ppm ASTM D5185m >20	0	---	---
Copper	ppm ASTM D5185m >20	<1	---	---
Tin	ppm ASTM D5185m >20	0	---	---
Vanadium	ppm ASTM D5185m	0	---	---
Cadmium	ppm ASTM D5185m	0	---	---

ADDITIVES

method	limit/base	current	history1	history2
Boron	ppm ASTM D5185m	0	---	---
Barium	ppm ASTM D5185m	0	---	---
Molybdenum	ppm ASTM D5185m	<1	---	---
Manganese	ppm ASTM D5185m	0	---	---
Magnesium	ppm ASTM D5185m	0	---	---
Calcium	ppm ASTM D5185m	48	---	---
Phosphorus	ppm ASTM D5185m	337	---	---
Zinc	ppm ASTM D5185m	446	---	---
Sulfur	ppm ASTM D5185m	4886	---	---

CONTAMINANTS

method	limit/base	current	history1	history2
Silicon	ppm ASTM D5185m >15	<1	---	---
Sodium	ppm ASTM D5185m	0	---	---
Potassium	ppm ASTM D5185m >20	1	---	---

FLUID CLEANLINESS

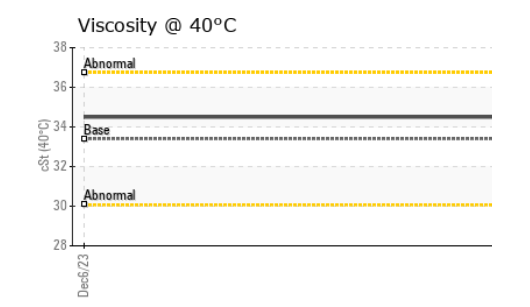
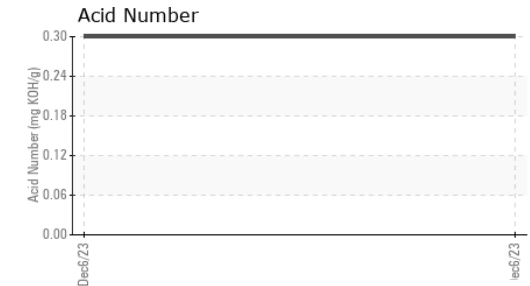
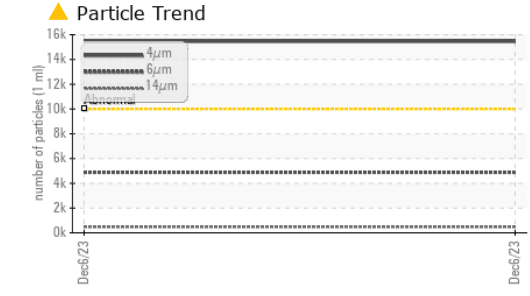
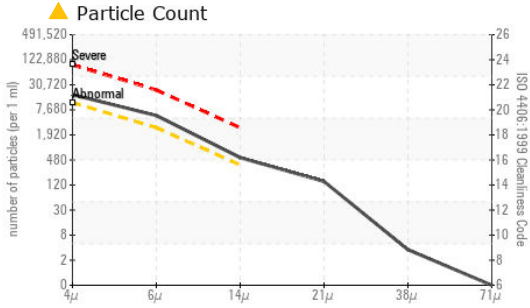
method	limit/base	current	history1	history2
Particles >4µm	ASTM D7647 >10000	▲ 15463	---	---
Particles >6µm	ASTM D7647 >2500	▲ 4888	---	---
Particles >14µm	ASTM D7647 >320	▲ 480	---	---
Particles >21µm	ASTM D7647 >80	▲ 129	---	---
Particles >38µm	ASTM D7647 >20	3	---	---
Particles >71µm	ASTM D7647 >4	0	---	---
Oil Cleanliness	ISO 4406 (c) >20/18/15	▲ 21/19/16	---	---

FLUID DEGRADATION

method	limit/base	current	history1	history2
Acid Number (AN)	mg KOH/g ASTM D8045	0.30	---	---



OIL ANALYSIS REPORT



Laboratory : WearCheck USA - 501 Madison Ave., Cary, NC 27513
Sample No. : PH0003678 **Received** : 08 Dec 2023
Lab Number : 06029984 **Diagnosed** : 13 Dec 2023
Unique Number : 10779775 **Diagnostician** : Jonathan Hester
Test Package : PLANT (Additional Tests: PrtFilter)

LINDE ADVANCED MATERIALS TECHNOLOGIES
 542 ROUTE 303
 ORANGEBURG, NY
 US 10920
 Contact: THOMAS BIGGIE
 thomas.biggie@linde.com

To discuss this sample report, contact Customer Service at 1-800-237-1369.
 * - Denotes test methods that are outside of the ISO 17025 scope of accreditation.
 Statements of conformity to specifications are based on the simple acceptance decision rule (JCGM 106:2012)

VISUAL	method	limit/base	current	history1	history2	
White Metal	scalar	*Visual	NONE	NONE	---	---
Yellow Metal	scalar	*Visual	NONE	NONE	---	---
Precipitate	scalar	*Visual	NONE	NONE	---	---
Silt	scalar	*Visual	NONE	NONE	---	---
Debris	scalar	*Visual	NONE	NONE	---	---
Sand/Dirt	scalar	*Visual	NONE	NONE	---	---
Appearance	scalar	*Visual	NORML	NORML	---	---
Odor	scalar	*Visual	NORML	NORML	---	---
Emulsified Water	scalar	*Visual	>0.05	NEG	---	---
Free Water	scalar	*Visual		NEG	---	---

FLUID PROPERTIES	method	limit/base	current	history1	history2	
Visc @ 40°C	cSt	ASTM D445	33.4	34.5	---	---

SAMPLE IMAGES	method	limit/base	current	history1	history2
Color				no image	no image
Bottom				no image	no image
PrtFilter				no image	no image

GRAPHS

