



PROBLEM SUMMARY

Sample Rating Trend



ISO



Machine Id
MAZAK NEXUS 450II-MY
Component
Hydraulic System
Fluid
MOBIL DTE ULTRA 24 ISO 32 (--- GAL)

COMPONENT CONDITION SUMMARY

▲ Particle Trend



RECOMMENDATION

No corrective action is recommended at this time.
Resample at the next service interval to monitor.

PROBLEMATIC TEST RESULTS

| | | | | | | |
|-----------------|--------------|-----------|-------------------|------------------|----------|----------|
| Sample Status | | | | ATTENTION | --- | --- |
| Particles >4µm | ASTM D7647 | >10000 | ▲ 14350 | --- | --- | --- |
| Particles >6µm | ASTM D7647 | >2500 | ▲ 3513 | --- | --- | --- |
| Oil Cleanliness | ISO 4406 (c) | >20/18/15 | ▲ 21/19/15 | --- | --- | --- |
| PrtFilter | | | | | no image | no image |

Customer Id: LINORA
Sample No.: PH0003684
Lab Number: 06029985
Test Package: PLANT



To manage this report scan the QR code

To discuss the diagnosis or test data:
Jonathan Hester +1 919-379-4092 x4092
jhester@wearcheckusa.com

To change component or sample information:
Customer Service +1 1-800-237-1369
customerservice@wearcheck.com

RECOMMENDED ACTIONS

There are no recommended actions for this sample.

HISTORICAL DIAGNOSIS



OIL ANALYSIS REPORT

Sample Rating Trend



ISO



Machine Id
MAZAK NEXUS 450II-MY
 Component
Hydraulic System
 Fluid
MOBIL DTE ULTRA 24 ISO 32 (--- GAL)

DIAGNOSIS

▲ Recommendation

No corrective action is recommended at this time. Resample at the next service interval to monitor.

Wear

All component wear rates are normal.

▲ Contamination

There is a moderate amount of silt (particulates < 14 microns in size) present in the oil.

Fluid Condition

The AN level is acceptable for this fluid. The condition of the oil is suitable for further service.

| SAMPLE INFORMATION | method | limit/base | current | history1 | history2 |
|--------------------|-------------|-------------|--------------------|----------|----------|
| Sample Number | Client Info | | PH0003684 | --- | --- |
| Sample Date | Client Info | | 06 Dec 2023 | --- | --- |
| Machine Age | yrs | Client Info | 0 | --- | --- |
| Oil Age | yrs | Client Info | 1 | --- | --- |
| Oil Changed | Client Info | | Changed | --- | --- |
| Sample Status | | | ATTENTION | --- | --- |

| CONTAMINATION | method | limit/base | current | history1 | history2 |
|---------------|-----------|------------|------------|----------|----------|
| Water | WC Method | >0.05 | NEG | --- | --- |

| WEAR METALS | method | limit/base | current | history1 | history2 | |
|-------------|--------|-------------|---------|--------------|----------|-----|
| Iron | ppm | ASTM D5185m | >20 | <1 | --- | --- |
| Chromium | ppm | ASTM D5185m | >20 | 0 | --- | --- |
| Nickel | ppm | ASTM D5185m | >20 | 0 | --- | --- |
| Titanium | ppm | ASTM D5185m | | <1 | --- | --- |
| Silver | ppm | ASTM D5185m | | 0 | --- | --- |
| Aluminum | ppm | ASTM D5185m | >20 | 0 | --- | --- |
| Lead | ppm | ASTM D5185m | >20 | 0 | --- | --- |
| Copper | ppm | ASTM D5185m | >20 | <1 | --- | --- |
| Tin | ppm | ASTM D5185m | >20 | 14 | --- | --- |
| Vanadium | ppm | ASTM D5185m | | 0 | --- | --- |
| Cadmium | ppm | ASTM D5185m | | 0 | --- | --- |

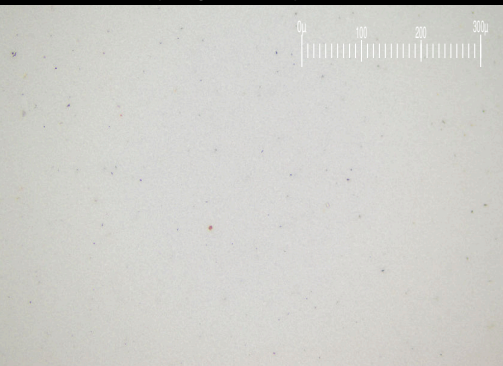
| ADDITIVES | method | limit/base | current | history1 | history2 | |
|------------|--------|-------------|---------|-------------|----------|-----|
| Boron | ppm | ASTM D5185m | | 0 | --- | --- |
| Barium | ppm | ASTM D5185m | | 0 | --- | --- |
| Molybdenum | ppm | ASTM D5185m | | 0 | --- | --- |
| Manganese | ppm | ASTM D5185m | | 0 | --- | --- |
| Magnesium | ppm | ASTM D5185m | | 0 | --- | --- |
| Calcium | ppm | ASTM D5185m | | 0 | --- | --- |
| Phosphorus | ppm | ASTM D5185m | | 81 | --- | --- |
| Zinc | ppm | ASTM D5185m | | 114 | --- | --- |
| Sulfur | ppm | ASTM D5185m | | 1490 | --- | --- |

| CONTAMINANTS | method | limit/base | current | history1 | history2 | |
|--------------|--------|-------------|---------|--------------|----------|-----|
| Silicon | ppm | ASTM D5185m | >15 | <1 | --- | --- |
| Sodium | ppm | ASTM D5185m | | 0 | --- | --- |
| Potassium | ppm | ASTM D5185m | >20 | 2 | --- | --- |

| FLUID CLEANLINESS | method | limit/base | current | history1 | history2 |
|-------------------|--------------|------------|-------------------|----------|----------|
| Particles >4µm | ASTM D7647 | >10000 | ▲ 14350 | --- | --- |
| Particles >6µm | ASTM D7647 | >2500 | ▲ 3513 | --- | --- |
| Particles >14µm | ASTM D7647 | >320 | 229 | --- | --- |
| Particles >21µm | ASTM D7647 | >80 | 60 | --- | --- |
| Particles >38µm | ASTM D7647 | >20 | 2 | --- | --- |
| Particles >71µm | ASTM D7647 | >4 | 0 | --- | --- |
| Oil Cleanliness | ISO 4406 (c) | >20/18/15 | ▲ 21/19/15 | --- | --- |

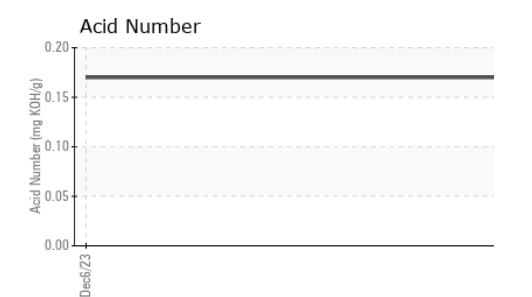
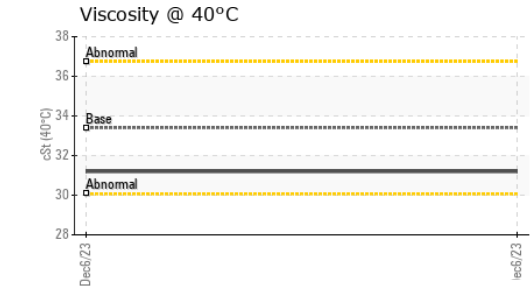
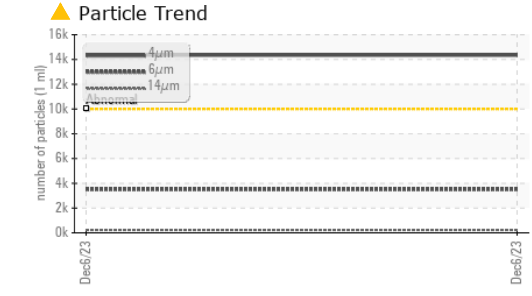
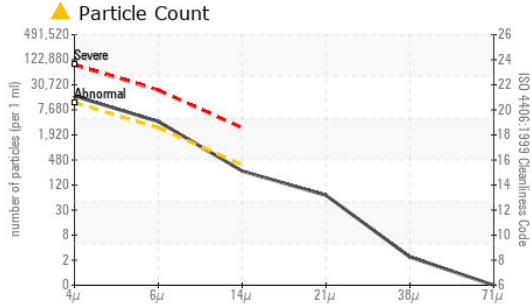
| FLUID DEGRADATION | method | limit/base | current | history1 | history2 |
|-------------------|----------|------------|-------------|----------|----------|
| Acid Number (AN) | mg KOH/g | ASTM D8045 | 0.17 | --- | --- |

Particle Filter (Magn: 200 x)





OIL ANALYSIS REPORT



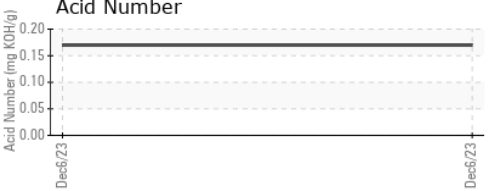
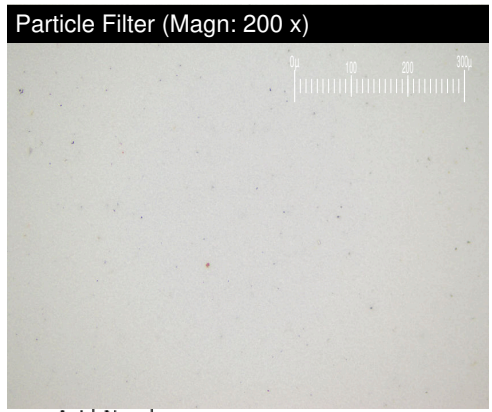
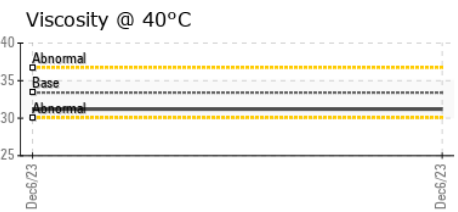
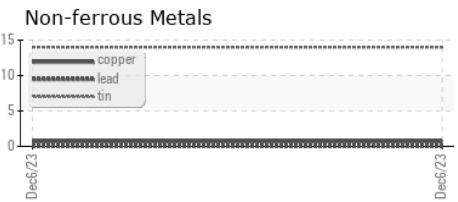
| VISUAL | method | limit/base | current | history1 | history2 | |
|------------------|--------|------------|---------|----------|----------|-----|
| White Metal | scalar | *Visual | NONE | NONE | --- | --- |
| Yellow Metal | scalar | *Visual | NONE | NONE | --- | --- |
| Precipitate | scalar | *Visual | NONE | NONE | --- | --- |
| Silt | scalar | *Visual | NONE | NONE | --- | --- |
| Debris | scalar | *Visual | NONE | NONE | --- | --- |
| Sand/Dirt | scalar | *Visual | NONE | NONE | --- | --- |
| Appearance | scalar | *Visual | NORML | NORML | --- | --- |
| Odor | scalar | *Visual | NORML | NORML | --- | --- |
| Emulsified Water | scalar | *Visual | >0.05 | NEG | --- | --- |
| Free Water | scalar | *Visual | | NEG | --- | --- |

| FLUID PROPERTIES | method | limit/base | current | history1 | history2 | |
|------------------|--------|------------|---------|----------|----------|-----|
| Visc @ 40°C | cSt | ASTM D445 | 33.4 | 31.2 | --- | --- |

| SAMPLE IMAGES | method | limit/base | current | history1 | history2 |
|---------------|--------|------------|---------|----------|----------|
|---------------|--------|------------|---------|----------|----------|

| | | | | | |
|-----------|--|--|--|----------|----------|
| Color | | | | no image | no image |
| Bottom | | | | no image | no image |
| PrtFilter | | | | no image | no image |

GRAPHS



Laboratory : WearCheck USA - 501 Madison Ave., Cary, NC 27513
Sample No. : PH0003684 **Received** : 08 Dec 2023
Lab Number : 06029985 **Diagnosed** : 13 Dec 2023
Unique Number : 10779776 **Diagnostician** : Jonathan Hester
Test Package : PLANT (Additional Tests: PrtFilter)

LINDE ADVANCED MATERIALS TECHNOLOGIES
 542 ROUTE 303
 ORANGEBURG, NY
 US 10920
 Contact: THOMAS BIGGIE
 thomas.biggie@linde.com

To discuss this sample report, contact Customer Service at 1-800-237-1369.
 * - Denotes test methods that are outside of the ISO 17025 scope of accreditation.
 Statements of conformity to specifications are based on the simple acceptance decision rule (JCGM 106:2012)