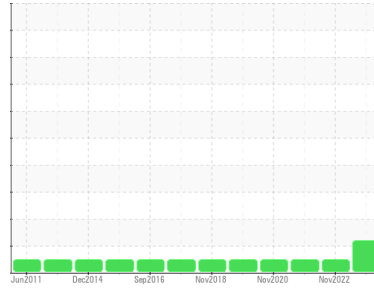


# OIL ANALYSIS REPORT

Sample Rating Trend



**VISUAL METAL**



Machine Id  
**C102**  
Component  
**Hydraulic System**  
Fluid  
**MOBIL DTE 10 EXCEL 32 (43 GAL)**

**DIAGNOSIS**

**Recommendation**

Re-sample to verify the actual oil condition. Replace filter elements. Change oil if cleanliness level does not improve after replacing the filter(s). We were unable to perform a particle count due to metal particles present in this sample.

**Wear**

Moderate concentration of visible metal present. All component wear rates are normal.

**Contamination**

There is no indication of any contamination in the oil.

**Fluid Condition**

The AN level is acceptable for this fluid.

SAMPLE INFORMATION		method	limit/base	current	history1	history2
Sample Number	Client Info			<b>MHI026238</b>	MHI019146	MHI019134
Sample Date	Client Info			<b>01 Dec 2023</b>	21 Nov 2022	02 Dec 2021
Machine Age	hrs	Client Info		<b>0</b>	0	0
Oil Age	hrs	Client Info		<b>26238</b>	89280	83696
Oil Changed	Client Info			<b>N/A</b>	Not Changd	Not Changd
Sample Status				<b>ABNORMAL</b>	NORMAL	NORMAL

WEAR METALS		method	limit/base	current	history1	history2
Iron	ppm	ASTM D5185m	>50	<b>4</b>	4	4
Chromium	ppm	ASTM D5185m	>20	<b>0</b>	0	0
Nickel	ppm	ASTM D5185m	>20	<b>10</b>	13	7
Titanium	ppm	ASTM D5185m		<b>0</b>	0	0
Silver	ppm	ASTM D5185m		<b>0</b>	0	0
Aluminum	ppm	ASTM D5185m	>20	<b>0</b>	0	0
Lead	ppm	ASTM D5185m	>20	<b>&lt;1</b>	<1	1
Copper	ppm	ASTM D5185m	>20	<b>&lt;1</b>	<1	<1
Tin	ppm	ASTM D5185m	>20	<b>0</b>	0	0
Antimony	ppm	ASTM D5185m		<b>---</b>	---	0
Vanadium	ppm	ASTM D5185m		<b>0</b>	0	0
Cadmium	ppm	ASTM D5185m		<b>0</b>	0	0

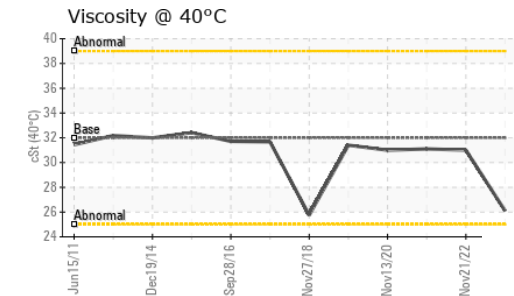
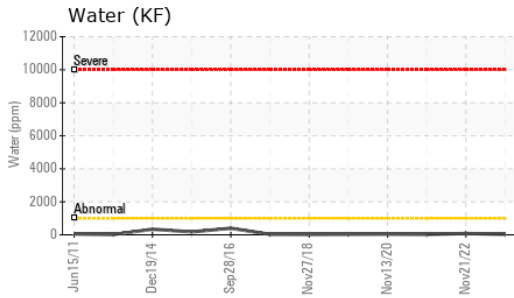
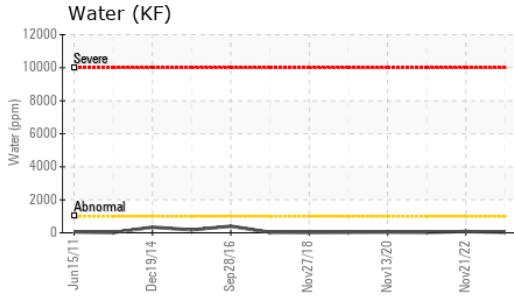
ADDITIVES		method	limit/base	current	history1	history2
Boron	ppm	ASTM D5185m		<b>0</b>	0	2
Barium	ppm	ASTM D5185m		<b>0</b>	0	0
Molybdenum	ppm	ASTM D5185m		<b>0</b>	0	0
Manganese	ppm	ASTM D5185m		<b>0</b>	0	0
Magnesium	ppm	ASTM D5185m		<b>0</b>	0	0
Calcium	ppm	ASTM D5185m	120	<b>101</b>	110	121
Phosphorus	ppm	ASTM D5185m	475	<b>391</b>	438	501
Zinc	ppm	ASTM D5185m		<b>30</b>	34	28
Sulfur	ppm	ASTM D5185m	1275	<b>1244</b>	1730	1517

CONTAMINANTS		method	limit/base	current	history1	history2
Silicon	ppm	ASTM D5185m	>+30	<b>0</b>	<1	<1
Sodium	ppm	ASTM D5185m		<b>2</b>	2	2
Potassium	ppm	ASTM D5185m	>20	<b>0</b>	0	0
Water	%	ASTM D6304	>0.1	<b>0.003</b>	0.008	0.003
ppm Water	ppm	ASTM D6304	>1000	<b>32</b>	80.3	27.8

FLUID CLEANLINESS		method	limit/base	current	history1	history2
Particles >4µm		ASTM D7647	>5000	<b>---</b>	1092	247
Particles >6µm		ASTM D7647	>1300	<b>---</b>	208	69
Particles >14µm		ASTM D7647	>160	<b>---</b>	34	23
Particles >21µm		ASTM D7647	>40	<b>---</b>	14	13
Particles >38µm		ASTM D7647	>10	<b>---</b>	2	2
Particles >71µm		ASTM D7647	>3	<b>---</b>	1	0
Oil Cleanliness		ISO 4406 (c)	>19/17/14	<b>---</b>	17/15/12	15/13/12

FLUID DEGRADATION		method	limit/base	current	history1	history2
Acid Number (AN)	mg KOH/g	ASTM D8045		<b>0.09</b>	0.13	0.08

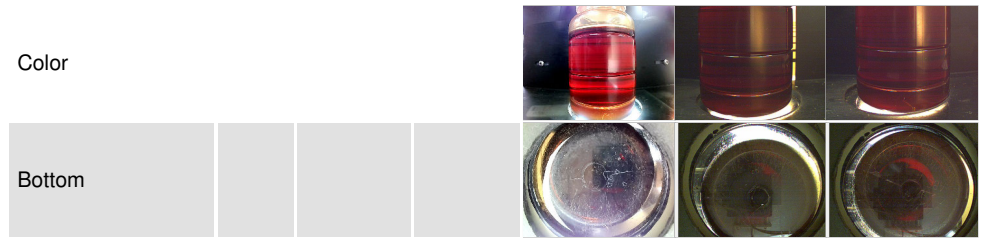
# OIL ANALYSIS REPORT



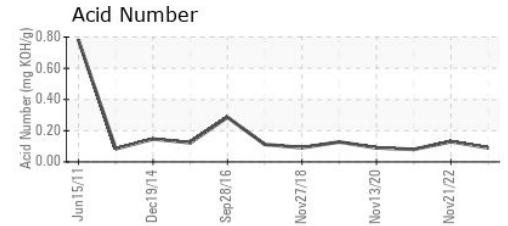
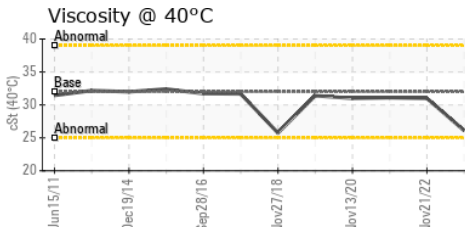
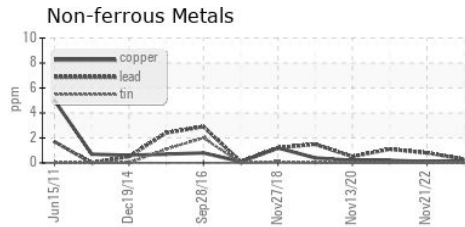
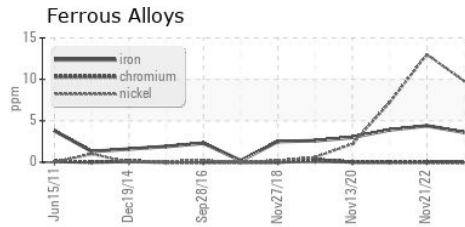
VISUAL	method	limit/base	current	history1	history2
White Metal	scalar	*Visual	NONE	▲ MODER	NONE
Yellow Metal	scalar	*Visual	NONE	NONE	NONE
Precipitate	scalar	*Visual	NONE	NONE	NONE
Silt	scalar	*Visual	NONE	NONE	NONE
Debris	scalar	*Visual	NONE	NONE	NONE
Sand/Dirt	scalar	*Visual	NONE	NONE	NONE
Appearance	scalar	*Visual	NORML	NORML	NORML
Odor	scalar	*Visual	NORML	NORML	NORML
Emulsified Water	scalar	*Visual	>0.1	NEG	NEG
Free Water	scalar	*Visual		NEG	NEG

FLUID PROPERTIES	method	limit/base	current	history1	history2
Visc @ 40°C	cSt	ASTM D445 32	26.1	31.0	31.1

SAMPLE IMAGES	method	limit/base	current	history1	history2
---------------	--------	------------	---------	----------	----------



## GRAPHS



Certificate L2367

Laboratory : WearCheck USA - 501 Madison Ave., Cary, NC 27513  
 Sample No. : MH1026238 Recieved : 08 Jan 2024  
 Lab Number : 06054894 Diagnosed : 10 Jan 2024  
 Unique Number : 10820843 Diagnostician : Jonathan Hester  
 Test Package : IND 2 ( Additional Tests: KF, PQ )

To discuss this sample report, contact Customer Service at 1-800-237-1369.

\* - Denotes test methods that are outside of the ISO 17025 scope of accreditation.

Statements of conformity to specifications are based on the simple acceptance decision rule (JCGM 106:2012)

**DIAMOND WTG - DILLON**  
 P.O. BOX 880  
 DESERT HOT SPRINGS, CA  
 US 92240  
 Contact: DANIEL BOYD  
 daniel.boyd@diamondwtg.com  
 T: (760)329-7171  
 F: (760)329-7122