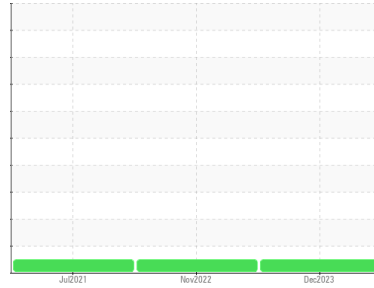




# OIL ANALYSIS REPORT

Sample Rating Trend

**NORMAL**



Area  
**[21-19-1578]**  
 Machine Id  
**HPU VALVE/DEFLECTOR**  
 Component  
**Hydraulic System**  
 Fluid  
**CHEVRON HYDRAULIC OIL AW ISO 32 (60 GAL)**

## DIAGNOSIS

### Recommendation

Resample at the next service interval to monitor.

### Wear

All component wear rates are normal.

### Contamination

There is no indication of any contamination in the oil. The amount and size of particulates present in the system are acceptable.

### Fluid Condition

The AN level is acceptable for this fluid. The condition of the oil is suitable for further service.

## SAMPLE INFORMATION

	method	limit/base	current	history1	history2
Sample Number	Client Info		<b>WCI2333761</b>	WCI2333760	WCI2333750
Sample Date	Client Info		<b>28 Dec 2023</b>	02 Nov 2022	26 Jul 2021
Machine Age	hrs	Client Info	<b>0</b>	0	0
Oil Age	hrs	Client Info	<b>0</b>	0	0
Oil Changed	Client Info		<b>N/A</b>	N/A	N/A
Sample Status			<b>NORMAL</b>	NORMAL	NORMAL

## CONTAMINATION

	method	limit/base	current	history1	history2
Water	WC Method	>0.05	<b>NEG</b>	NEG	NEG

## WEAR METALS

	method	limit/base	current	history1	history2
Iron	ppm	ASTM D5185m >20	<b>0</b>	<1	<1
Chromium	ppm	ASTM D5185m >20	<b>0</b>	0	0
Nickel	ppm	ASTM D5185m >20	<b>0</b>	0	0
Titanium	ppm	ASTM D5185m	<b>0</b>	0	0
Silver	ppm	ASTM D5185m	<b>0</b>	<1	0
Aluminum	ppm	ASTM D5185m >20	<b>0</b>	<1	0
Lead	ppm	ASTM D5185m >20	<b>0</b>	<1	<1
Copper	ppm	ASTM D5185m >20	<b>0</b>	<1	<1
Tin	ppm	ASTM D5185m >20	<b>0</b>	<1	0
Antimony	ppm	ASTM D5185m	<b>---</b>	---	0
Vanadium	ppm	ASTM D5185m	<b>0</b>	0	0
Cadmium	ppm	ASTM D5185m	<b>0</b>	<1	0

## ADDITIVES

	method	limit/base	current	history1	history2
Boron	ppm	ASTM D5185m	<b>0</b>	0	0
Barium	ppm	ASTM D5185m	<b>0</b>	2	0
Molybdenum	ppm	ASTM D5185m	<b>0</b>	0	0
Manganese	ppm	ASTM D5185m	<b>&lt;1</b>	<1	0
Magnesium	ppm	ASTM D5185m	<b>0</b>	<1	0
Calcium	ppm	ASTM D5185m	<b>0</b>	<1	0
Phosphorus	ppm	ASTM D5185m	<b>210</b>	219	210
Zinc	ppm	ASTM D5185m	<b>0</b>	12	0
Sulfur	ppm	ASTM D5185m	<b>228</b>	280	290

## CONTAMINANTS

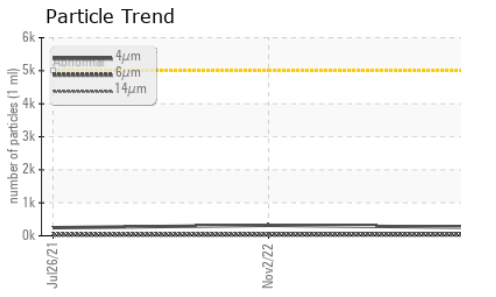
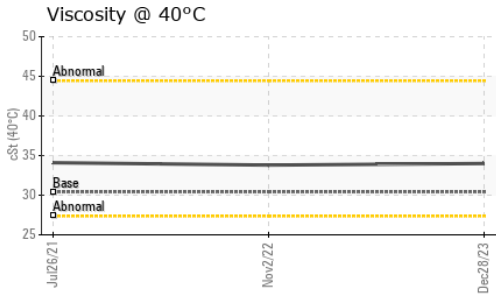
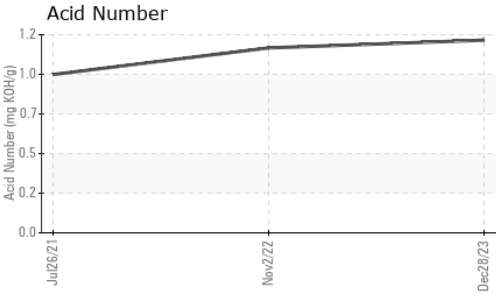
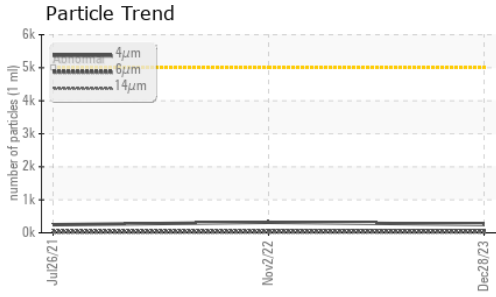
	method	limit/base	current	history1	history2
Silicon	ppm	ASTM D5185m >15	<b>6</b>	7	6
Sodium	ppm	ASTM D5185m	<b>0</b>	0	0
Potassium	ppm	ASTM D5185m >20	<b>&lt;1</b>	<1	<1

## FLUID CLEANLINESS

	method	limit/base	current	history1	history2
Particles >4µm	ASTM D7647	>5000	<b>255</b>	318	246
Particles >6µm	ASTM D7647	>1300	<b>62</b>	51	37
Particles >14µm	ASTM D7647	>160	<b>9</b>	8	5
Particles >21µm	ASTM D7647	>40	<b>3</b>	3	2
Particles >38µm	ASTM D7647	>10	<b>0</b>	0	1
Particles >71µm	ASTM D7647	>3	<b>0</b>	0	0
Oil Cleanliness	ISO 4406 (c)	>19/17/14	<b>15/13/10</b>	15/13/10	15/12/10



# OIL ANALYSIS REPORT

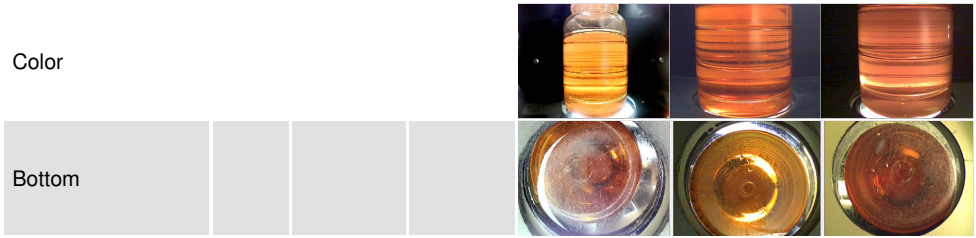


FLUID DEGRADATION		method	limit/base	current	history1	history2
Acid Number (AN)	mg KOH/g	ASTM D8045		<b>1.167</b>	1.12	0.959

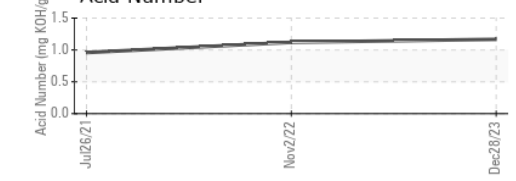
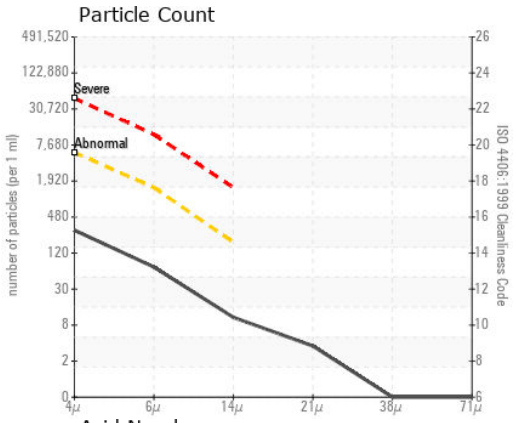
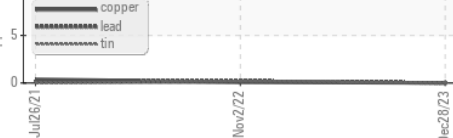
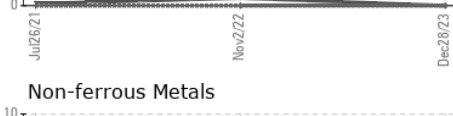
VISUAL		method	limit/base	current	history1	history2
White Metal	scalar	*Visual	NONE	<b>NONE</b>	NONE	NONE
Yellow Metal	scalar	*Visual	NONE	<b>NONE</b>	NONE	NONE
Precipitate	scalar	*Visual	NONE	<b>NONE</b>	NONE	NONE
Silt	scalar	*Visual	NONE	<b>NONE</b>	NONE	NONE
Debris	scalar	*Visual	NONE	<b>NONE</b>	NONE	NONE
Sand/Dirt	scalar	*Visual	NONE	<b>NONE</b>	NONE	NONE
Appearance	scalar	*Visual	NORML	<b>NORML</b>	NORML	NORML
Odor	scalar	*Visual	NORML	<b>NORML</b>	NORML	NORML
Emulsified Water	scalar	*Visual	>0.05	<b>NEG</b>	NEG	NEG
Free Water	scalar	*Visual		<b>NEG</b>	NEG	NEG

FLUID PROPERTIES		method	limit/base	current	history1	history2
Visc @ 40°C	cSt	ASTM D445	30.4	<b>34.0</b>	33.8	34.1

### SAMPLE IMAGES



### GRAPHS



**Laboratory** : WearCheck USA - 501 Madison Ave., Cary, NC 27513  
**Sample No.** : WC12333761 **Received** : 10 Jan 2024  
**Lab Number** : 06056623 **Diagnosed** : 12 Jan 2024  
**Unique Number** : 10822572 **Diagnostician** : Jonathan Hester  
**Test Package** : IND 2

**THOMPSON CONSTRUCTION GROUP**  
 11785 N TRACEY RD  
 HAYDEN, ID  
 US 83835  
 Contact: WEST POWERS  
 WPOWERS@THOMPSONCONSTRUCTIONGROUP.COM  
 T:  
 F:

To discuss this sample report, contact Customer Service at 1-800-237-1369.  
 \* - Denotes test methods that are outside of the ISO 17025 scope of accreditation.  
 Statements of conformity to specifications are based on the simple acceptance decision rule (JCGM 106:2012)