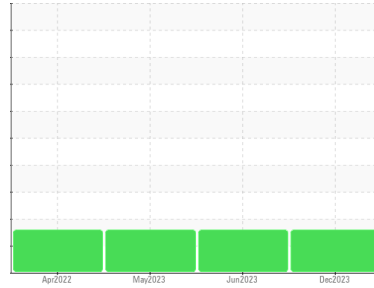




# OIL ANALYSIS REPORT

Sample Rating Trend



**WATER**



## Machine Id **CARLYLE LY03 LOW STAGE SCREW**

Component  
**Refrigeration Compressor**  
Fluid  
**POE 68 (--- GAL)**

### DIAGNOSIS

#### ▲ Recommendation

No corrective action is recommended at this time. Resample at the next service interval to monitor.

#### Wear

All component wear rates are normal.

#### ▲ Contamination

There is a trace of moisture present in the oil.

#### Fluid Condition

The AN level is acceptable for this fluid. The condition of the oil is suitable for further service.

### SAMPLE INFORMATION

	method	limit/base	current	history1	history2
Sample Number	Client Info		<b>WC0847190</b>	WC0736122	WC0736105
Sample Date	Client Info		<b>13 Dec 2023</b>	15 Jun 2023	08 May 2023
Machine Age	hrs	Client Info	<b>0</b>	0	0
Oil Age	hrs	Client Info	<b>0</b>	0	0
Oil Changed	Client Info		<b>N/A</b>	N/A	N/A
Sample Status			<b>MARGINAL</b>	MARGINAL	MARGINAL

### WEAR METALS

	method	limit/base	current	history1	history2
Iron	ppm	ASTM D5185m >8	<b>&lt;1</b>	1	2
Chromium	ppm	ASTM D5185m >2	<b>0</b>	0	0
Nickel	ppm	ASTM D5185m	<b>0</b>	<1	0
Titanium	ppm	ASTM D5185m	<b>0</b>	0	0
Silver	ppm	ASTM D5185m >2	<b>0</b>	0	0
Aluminum	ppm	ASTM D5185m >3	<b>0</b>	0	0
Lead	ppm	ASTM D5185m >2	<b>0</b>	0	0
Copper	ppm	ASTM D5185m >8	<b>0</b>	<1	0
Tin	ppm	ASTM D5185m >4	<b>&lt;1</b>	<1	0
Vanadium	ppm	ASTM D5185m	<b>&lt;1</b>	0	0
Cadmium	ppm	ASTM D5185m	<b>0</b>	0	0

### ADDITIVES

	method	limit/base	current	history1	history2
Boron	ppm	ASTM D5185m	<b>0</b>	2	0
Barium	ppm	ASTM D5185m	<b>0</b>	0	0
Molybdenum	ppm	ASTM D5185m	<b>0</b>	0	0
Manganese	ppm	ASTM D5185m	<b>0</b>	0	0
Magnesium	ppm	ASTM D5185m	<b>&lt;1</b>	0	0
Calcium	ppm	ASTM D5185m	<b>0</b>	0	0
Phosphorus	ppm	ASTM D5185m	<b>&lt;1</b>	0	4
Zinc	ppm	ASTM D5185m	<b>0</b>	0	0
Sulfur	ppm	ASTM D5185m	<b>0</b>	0	0

### CONTAMINANTS

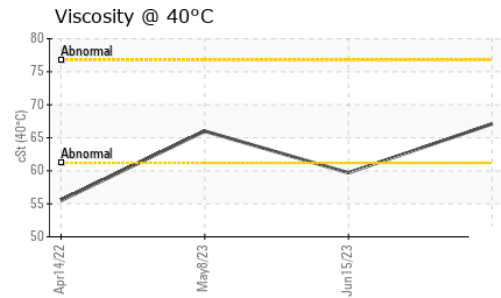
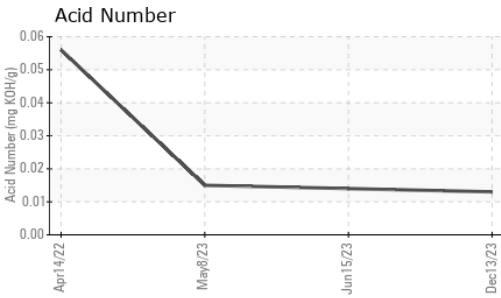
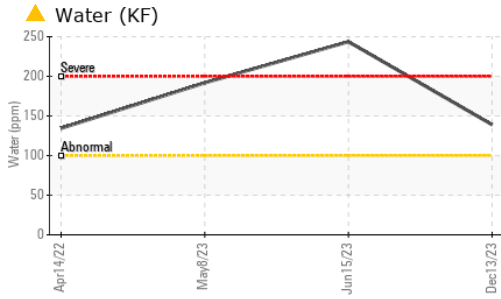
	method	limit/base	current	history1	history2
Silicon	ppm	ASTM D5185m >15	<b>0</b>	<1	<1
Sodium	ppm	ASTM D5185m	<b>0</b>	0	0
Potassium	ppm	ASTM D5185m >20	<b>0</b>	<1	<1
Water	%	ASTM D6304 >0.01	<b>▲ 0.013</b>	▲ 0.024	▲ 0.019
ppm Water	ppm	ASTM D6304 >100	<b>▲ 139</b>	▲ 243.7	▲ 191.8

### FLUID DEGRADATION

	method	limit/base	current	history1	history2
Acid Number (AN)	mg KOH/g	ASTM D974	<b>0.013</b>	0.014	0.015



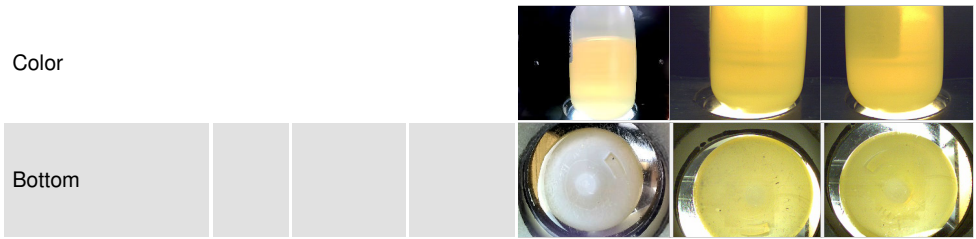
# OIL ANALYSIS REPORT



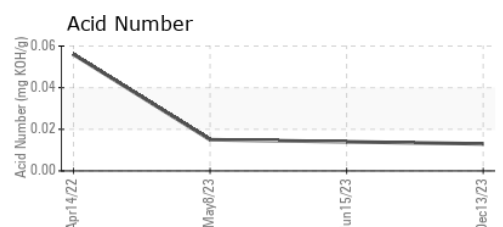
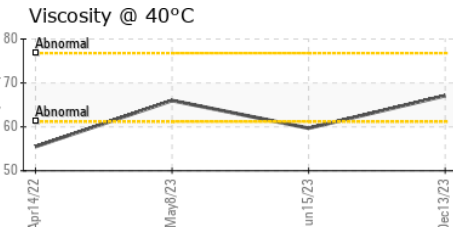
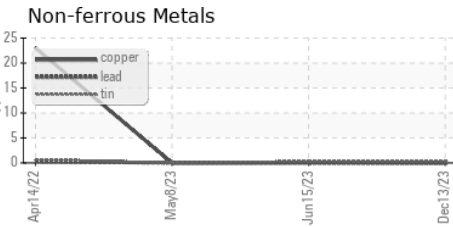
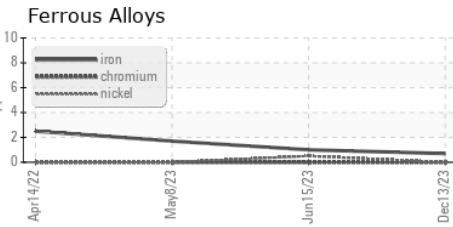
VISUAL	method	limit/base	current	history1	history2
White Metal	scalar	*Visual	NONE	NONE	NONE
Yellow Metal	scalar	*Visual	NONE	NONE	NONE
Precipitate	scalar	*Visual	NONE	NONE	NONE
Silt	scalar	*Visual	NONE	NONE	NONE
Debris	scalar	*Visual	NONE	NONE	NONE
Sand/Dirt	scalar	*Visual	NONE	NONE	NONE
Appearance	scalar	*Visual	NORML	NORML	NORML
Odor	scalar	*Visual	NORML	NORML	NORML
Emulsified Water	scalar	*Visual	>0.01	NEG	NEG
Free Water	scalar	*Visual		NEG	NEG

FLUID PROPERTIES	method	limit/base	current	history1	history2
Visc @ 40°C	cSt	ASTM D445	67.1	59.7	66.0

## SAMPLE IMAGES



## GRAPHS



Certificate L2367

Laboratory : WearCheck USA - 501 Madison Ave., Cary, NC 27513  
 Sample No. : WC0847190      Recieved : 10 Jan 2024  
 Lab Number : 06056787      Diagnosed : 11 Jan 2024  
 Unique Number : 10822736      Diagnostician : Angela Borella  
 Test Package : IND 2

**AAA ENERGY SERVICES**  
 4 COMMERCIAL RD  
 SCARBOROUGH, ME  
 US 04074  
 Contact: CHRIS WASSON  
 cwasson@aaaenergy.com  
 T: (207)883-1473  
 F: x:

To discuss this sample report, contact Customer Service at 1-800-237-1369.

\* - Denotes test methods that are outside of the ISO 17025 scope of accreditation.

Statements of conformity to specifications are based on the simple acceptance decision rule (JCGM 106:2012)