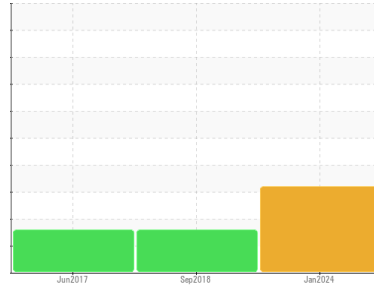




# OIL ANALYSIS REPORT

Sample Rating Trend



WATER



Area  
**DTE HEAVY**  
 Machine Id  
**SULLAIR 003-121662 - SPARTA LIGHT METALS**  
 Component  
**Compressor**

## DIAGNOSIS

### ▲ Recommendation

We advise that you follow the water drain-off procedure for this component. We recommend an early resample to monitor this condition.

### Wear

All component wear rates are normal.

### ▲ Contamination

There is a moderate concentration of water present in the oil. Excessive free water present.

### Fluid Condition

The AN level is acceptable for this fluid.

## SAMPLE INFORMATION

	method	limit/base	current	history1	history2
Sample Number	Client Info		<b>UCH06056816</b>	UCH04572634	WC04255846
Sample Date	Client Info		<b>10 Jan 2024</b>	13 Sep 2018	28 Jun 2017
Machine Age	hrs	Client Info	<b>0</b>	0	13359
Oil Age	hrs	Client Info	<b>0</b>	0	0
Oil Changed	Client Info		<b>N/A</b>	N/A	Changed
Sample Status			<b>ATTENTION</b>	ABNORMAL	MARGINAL

## WEAR METALS

	method	limit/base	current	history1	history2
Iron	ppm	ASTM D5185m >50	<b>5</b>	<1	0
Chromium	ppm	ASTM D5185m >10	<b>0</b>	0	0
Nickel	ppm	ASTM D5185m	<b>0</b>	0	0
Titanium	ppm	ASTM D5185m	<b>0</b>	0	0
Silver	ppm	ASTM D5185m	<b>0</b>	0	0
Aluminum	ppm	ASTM D5185m >25	<b>1</b>	<1	0
Lead	ppm	ASTM D5185m >25	<b>0</b>	0	<1
Copper	ppm	ASTM D5185m >50	<b>1</b>	<1	<1
Tin	ppm	ASTM D5185m >15	<b>2</b>	<1	0
Antimony	ppm	ASTM D5185m	<b>---</b>	0	0
Vanadium	ppm	ASTM D5185m	<b>&lt;1</b>	0	0
Cadmium	ppm	ASTM D5185m	<b>0</b>	0	0

## ADDITIVES

	method	limit/base	current	history1	history2
Boron	ppm	ASTM D5185m	<b>0</b>	<1	3
Barium	ppm	ASTM D5185m	<b>&lt;1</b>	1	<1
Molybdenum	ppm	ASTM D5185m	<b>0</b>	<1	0
Manganese	ppm	ASTM D5185m	<b>0</b>	<1	<1
Magnesium	ppm	ASTM D5185m	<b>0</b>	0	0
Calcium	ppm	ASTM D5185m	<b>0</b>	<1	0
Phosphorus	ppm	ASTM D5185m	<b>266</b>	217	136
Zinc	ppm	ASTM D5185m	<b>&lt;1</b>	8	0
Sulfur	ppm	ASTM D5185m	<b>852</b>	205	208

## CONTAMINANTS

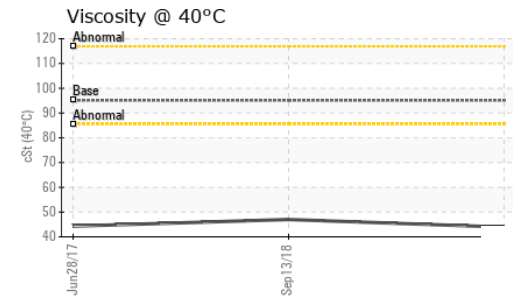
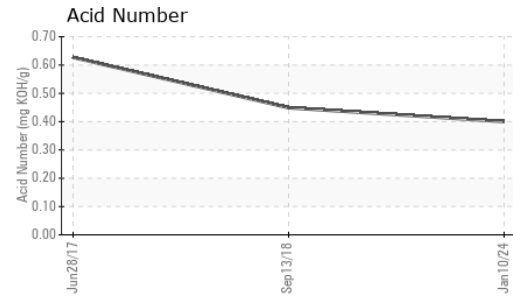
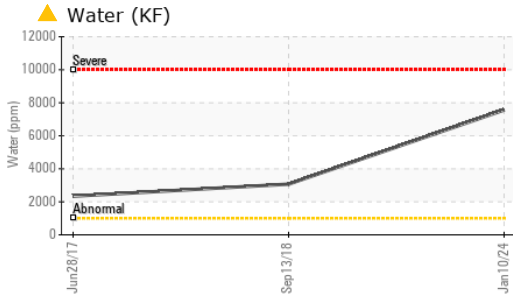
	method	limit/base	current	history1	history2
Silicon	ppm	ASTM D5185m >25	<b>&lt;1</b>	<1	15
Sodium	ppm	ASTM D5185m	<b>0</b>	1	21
Potassium	ppm	ASTM D5185m >20	<b>&lt;1</b>	<1	0
Water	%	ASTM D6304 >0.1	<b>▲ 0.756</b>	▲ 0.307	▲ 0.234
ppm Water	ppm	ASTM D6304 >1000	<b>▲ 7560</b>	▲ 3070	▲ 2340

## FLUID DEGRADATION

	method	limit/base	current	history1	history2
Acid Number (AN)	mg KOH/g	ASTM D8045	<b>0.40</b>	0.449	0.627



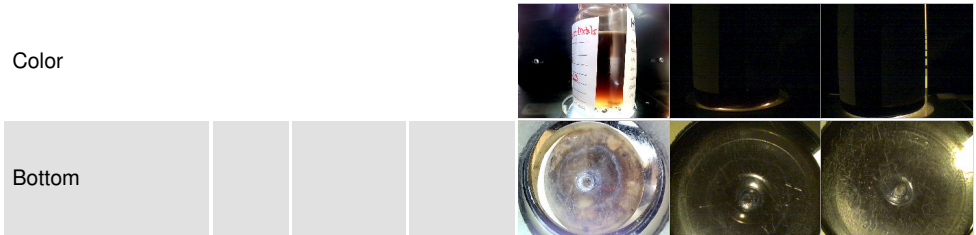
# OIL ANALYSIS REPORT



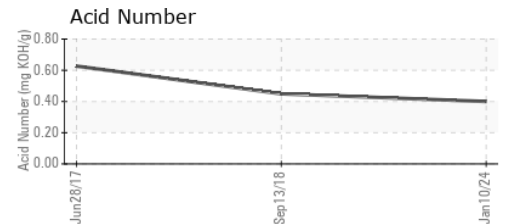
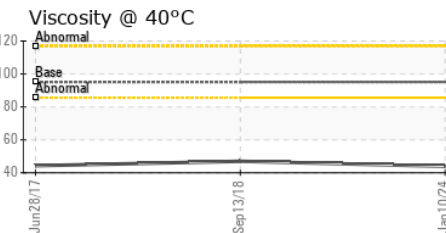
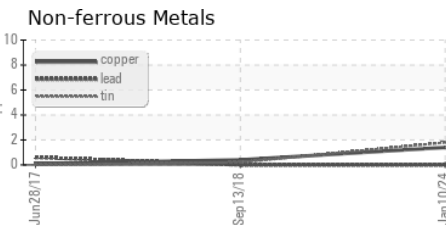
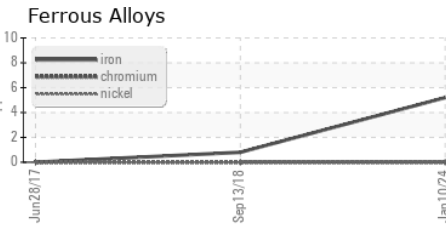
VISUAL	method	limit/base	current	history1	history2
White Metal	scalar	*Visual	NONE	NONE	NONE
Yellow Metal	scalar	*Visual	NONE	NONE	NONE
Precipitate	scalar	*Visual	NONE	NONE	NONE
Silt	scalar	*Visual	NONE	NONE	NONE
Debris	scalar	*Visual	NONE	NONE	LIGHT
Sand/Dirt	scalar	*Visual	NONE	NONE	NONE
Appearance	scalar	*Visual	NORML	NORML	NORML
Odor	scalar	*Visual	NORML	NORML	NORML
Emulsified Water	scalar	*Visual	>0.1	▲ 0.2%	0.2%
Free Water	scalar	*Visual		▲ >10%	NEG

FLUID PROPERTIES	method	limit/base	current	history1	history2
Visc @ 40°C	cSt	ASTM D445	95.1	43.9	47.00

SAMPLE IMAGES	method	limit/base	current	history1	history2
---------------	--------	------------	---------	----------	----------



## GRAPHS



Certificate L2367

Laboratory : WearCheck USA - 501 Madison Ave., Cary, NC 27513  
 Sample No. : UCH06056816    Recieved : 10 Jan 2024  
 Lab Number : 06056816    Diagnosed : 12 Jan 2024  
 Unique Number : 10822765    Diagnostician : Don Baldrige  
 Test Package : IND 2 ( Additional Tests: KF )

To discuss this sample report, contact Customer Service at 1-800-237-1369.

\* - Denotes test methods that are outside of the ISO 17025 scope of accreditation.

Statements of conformity to specifications are based on the simple acceptance decision rule (JCGM 106:2012)

**HTE TECHNOLOGIES**  
 2021 CONGRESSIONAL DR  
 ST LOUIS, MO  
 US 63146  
 Contact: JOSH DYRLAND  
 josh.dyrland@htetech.com  
 T: (314)731-4444  
 F: (314)731-4424