



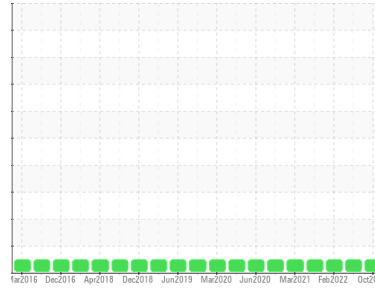
OIL ANALYSIS REPORT

Sample Rating Trend

NORMAL



Area
PO-6040
Machine Id
QUINCY 99410H - CAPE FEAR HOSPITAL
Component
Compressor



DIAGNOSIS

Recommendation

Resample at the next service interval to monitor.

Wear

All component wear rates are normal.

Contamination

There is no indication of any contamination in the oil.

Fluid Condition

The AN level is acceptable for this fluid. The condition of the oil is suitable for further service.

SAMPLE INFORMATION

| | method | limit/base | current | history1 | history2 |
|---------------|-------------|-------------|--------------------|-------------|-------------|
| Sample Number | Client Info | | UCP06058225 | UCP05750936 | UCP05487932 |
| Sample Date | Client Info | | 26 Oct 2023 | 07 Dec 2022 | 17 Feb 2022 |
| Machine Age | hrs | Client Info | 120229 | 116398 | 112615 |
| Oil Age | hrs | Client Info | 0 | 8981 | 5192 |
| Oil Changed | Client Info | | Not Chngd | N/A | N/A |
| Sample Status | | | NORMAL | NORMAL | NORMAL |

CONTAMINATION

| | method | limit/base | current | history1 | history2 |
|-------|-----------|------------|------------|----------|----------|
| Water | WC Method | >0.1 | NEG | NEG | NEG |

WEAR METALS

| | method | limit/base | current | history1 | history2 |
|----------|--------|-----------------|--------------|----------|----------|
| Iron | ppm | ASTM D5185m >50 | 0 | 1 | <1 |
| Chromium | ppm | ASTM D5185m >10 | 0 | 0 | 0 |
| Nickel | ppm | ASTM D5185m | 0 | 0 | 1 |
| Titanium | ppm | ASTM D5185m | 0 | 0 | 0 |
| Silver | ppm | ASTM D5185m | 0 | 0 | 0 |
| Aluminum | ppm | ASTM D5185m >25 | 0 | 0 | 0 |
| Lead | ppm | ASTM D5185m >25 | <1 | <1 | <1 |
| Copper | ppm | ASTM D5185m >50 | <1 | <1 | <1 |
| Tin | ppm | ASTM D5185m >15 | 0 | 1 | 0 |
| Antimony | ppm | ASTM D5185m | --- | --- | 0 |
| Vanadium | ppm | ASTM D5185m | 0 | 0 | 0 |
| Cadmium | ppm | ASTM D5185m | 0 | 0 | 0 |

ADDITIVES

| | method | limit/base | current | history1 | history2 |
|------------|--------|-----------------|------------|----------|----------|
| Boron | ppm | ASTM D5185m 1 | 0 | 0 | 0 |
| Barium | ppm | ASTM D5185m 730 | 563 | 577 | 568 |
| Molybdenum | ppm | ASTM D5185m 0 | 0 | 0 | 0 |
| Manganese | ppm | ASTM D5185m 0.0 | 0 | 0 | 0 |
| Magnesium | ppm | ASTM D5185m 0 | 0 | <1 | 0 |
| Calcium | ppm | ASTM D5185m 0 | 2 | 4 | 2 |
| Phosphorus | ppm | ASTM D5185m 0 | 5 | 41 | 21 |
| Zinc | ppm | ASTM D5185m 0 | 19 | 4 | 0 |
| Sulfur | ppm | ASTM D5185m 590 | 366 | 329 | 448 |

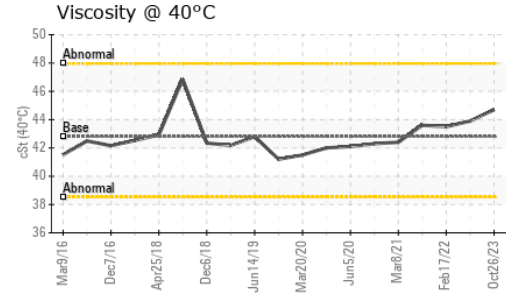
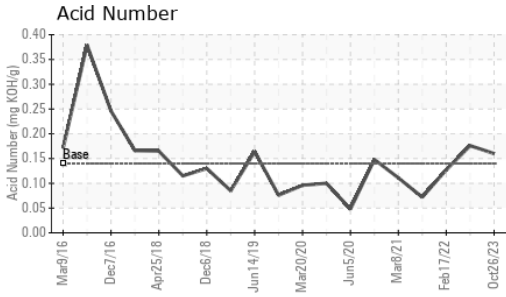
CONTAMINANTS

| | method | limit/base | current | history1 | history2 |
|-----------|--------|-----------------|-----------|----------|----------|
| Silicon | ppm | ASTM D5185m >25 | 0 | <1 | 1 |
| Sodium | ppm | ASTM D5185m | 39 | 36 | 31 |
| Potassium | ppm | ASTM D5185m >20 | 2 | 2 | 4 |

FLUID DEGRADATION

| | method | limit/base | current | history1 | history2 |
|------------------|----------|-----------------|-------------|----------|----------|
| Acid Number (AN) | mg KOH/g | ASTM D8045 0.14 | 0.16 | 0.176 | 0.127 |

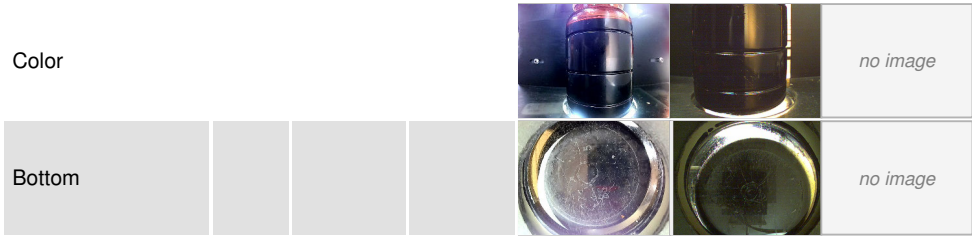
OIL ANALYSIS REPORT



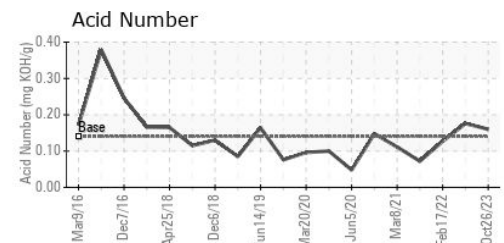
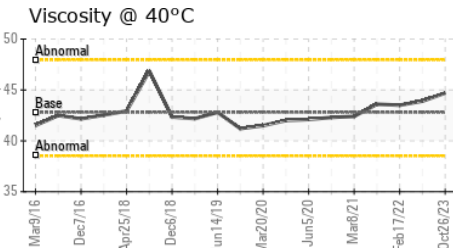
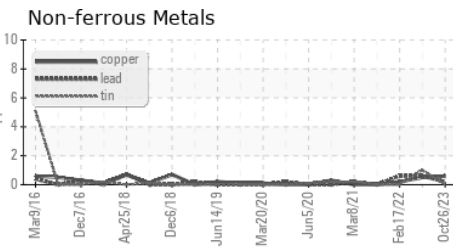
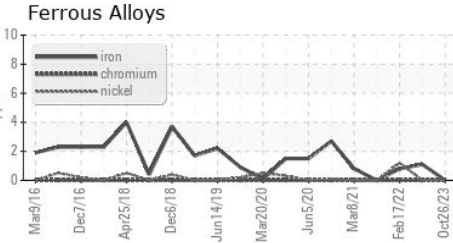
| VISUAL | method | limit/base | current | history1 | history2 | |
|------------------|--------|------------|---------|--------------|----------|-------|
| White Metal | scalar | *Visual | NONE | LIGHT | LIGHT | NONE |
| Yellow Metal | scalar | *Visual | NONE | NONE | NONE | NONE |
| Precipitate | scalar | *Visual | NONE | NONE | NONE | NONE |
| Silt | scalar | *Visual | NONE | NONE | NONE | NONE |
| Debris | scalar | *Visual | NONE | NONE | NONE | NONE |
| Sand/Dirt | scalar | *Visual | NONE | NONE | NONE | NONE |
| Appearance | scalar | *Visual | NORML | NORML | NORML | NORML |
| Odor | scalar | *Visual | NORML | NORML | NORML | NORML |
| Emulsified Water | scalar | *Visual | >0.1 | NEG | NEG | NEG |
| Free Water | scalar | *Visual | | NEG | NEG | NEG |

| FLUID PROPERTIES | method | limit/base | current | history1 | history2 | |
|------------------|--------|------------|---------|-------------|----------|------|
| Visc @ 40°C | cSt | ASTM D445 | 42.8 | 44.7 | 43.9 | 43.5 |

| SAMPLE IMAGES | method | limit/base | current | history1 | history2 |
|---------------|--------|------------|---------|----------|----------|
|---------------|--------|------------|---------|----------|----------|



GRAPHS



Laboratory : WearCheck USA - 501 Madison Ave., Cary, NC 27513
Sample No. : UCP06058225 **Recieved** : 11 Jan 2024
Lab Number : **06058225** **Diagnosed** : 14 Jan 2024
Unique Number : 10829607 **Diagnostician** : Don Baldrige
Test Package : IND 2

PATTONS INC - RALEIGH
 2616 DISCOVERY DRIVE
 RALEIGH, NC
 US 27616
 Contact: AARON MCCOY
 aaron.mccoy@pattonsync.com
 T: (919)872-6411
 F: (919)876-1961

To discuss this sample report, contact Customer Service at 1-800-237-1369.
 * - Denotes test methods that are outside of the ISO 17025 scope of accreditation.
 Statements of conformity to specifications are based on the simple acceptance decision rule (JCGM 106:2012)