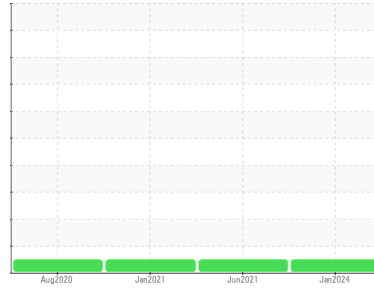


Area
NOT GIVEN

Machine Id
SULLIVAN PALATEK 11H033 - G&K INDUSTRIAL SERVICES

Component
Compressor



DIAGNOSIS

Recommendation

Resample at the next service interval to monitor.

Wear

All component wear rates are normal.

Contamination

There is no indication of any contamination in the oil.

Fluid Condition

The AN level is acceptable for this fluid. The condition of the oil is suitable for further service.

| SAMPLE INFORMATION | | method | limit/base | current | history1 | history2 |
|--------------------|-------------|-------------|------------|--------------------|-------------|-------------|
| Sample Number | Client Info | | | UCS06058778 | UCS05295191 | UCS05159536 |
| Sample Date | Client Info | | | 06 Jan 2024 | 26 Jun 2021 | 09 Jan 2021 |
| Machine Age | hrs | Client Info | | 56223 | 49444 | 42302 |
| Oil Age | hrs | Client Info | | 2067 | 2142 | 1913 |
| Oil Changed | Client Info | | | Not Changed | Changed | Changed |
| Sample Status | | | | NORMAL | NORMAL | NORMAL |

| CONTAMINATION | | method | limit/base | current | history1 | history2 |
|---------------|-----------|--------|------------|------------|----------|----------|
| Water | WC Method | | >0.8 | NEG | NEG | NEG |

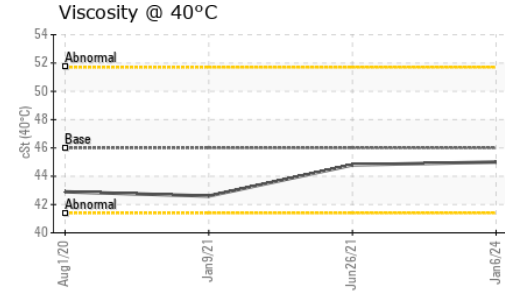
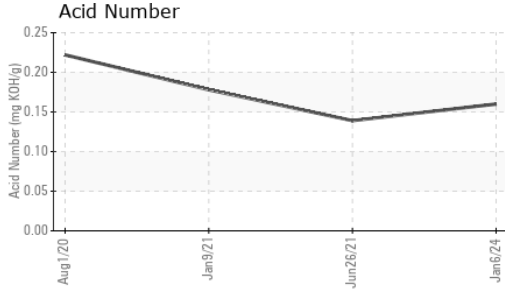
| WEAR METALS | | method | limit/base | current | history1 | history2 |
|-------------|-----|-------------|------------|--------------|----------|----------|
| Iron | ppm | ASTM D5185m | >50 | <1 | 0 | <1 |
| Chromium | ppm | ASTM D5185m | >10 | <1 | 0 | 0 |
| Nickel | ppm | ASTM D5185m | | <1 | 0 | 1 |
| Titanium | ppm | ASTM D5185m | | <1 | 0 | 0 |
| Silver | ppm | ASTM D5185m | | 0 | 0 | 0 |
| Aluminum | ppm | ASTM D5185m | >25 | 2 | <1 | 0 |
| Lead | ppm | ASTM D5185m | >25 | 0 | <1 | 2 |
| Copper | ppm | ASTM D5185m | >50 | 8 | 8 | 13 |
| Tin | ppm | ASTM D5185m | >15 | <1 | <1 | 0 |
| Antimony | ppm | ASTM D5185m | | --- | 0 | 0 |
| Vanadium | ppm | ASTM D5185m | | 0 | 0 | 0 |
| Cadmium | ppm | ASTM D5185m | | 0 | <1 | 0 |

| ADDITIVES | | method | limit/base | current | history1 | history2 |
|------------|-----|-------------|------------|--------------|----------|----------|
| Boron | ppm | ASTM D5185m | 2 | 0 | 3 | 3 |
| Barium | ppm | ASTM D5185m | 525 | 208 | 253 | 407 |
| Molybdenum | ppm | ASTM D5185m | 10 | 0 | 0 | 0 |
| Manganese | ppm | ASTM D5185m | | 0 | 0 | 0 |
| Magnesium | ppm | ASTM D5185m | 5 | <1 | 1 | <1 |
| Calcium | ppm | ASTM D5185m | 10 | 2 | 5 | 4 |
| Phosphorus | ppm | ASTM D5185m | 250 | 26 | 16 | 8 |
| Zinc | ppm | ASTM D5185m | 100 | 8 | 10 | 14 |
| Sulfur | ppm | ASTM D5185m | 400 | 654 | 514 | 425 |

| CONTAMINANTS | | method | limit/base | current | history1 | history2 |
|--------------|-----|-------------|------------|-----------|----------|----------|
| Silicon | ppm | ASTM D5185m | >25 | 1 | 0 | 1 |
| Sodium | ppm | ASTM D5185m | | 95 | 38 | 40 |
| Potassium | ppm | ASTM D5185m | >20 | 4 | 2 | 8 |

| FLUID DEGRADATION | | method | limit/base | current | history1 | history2 |
|-------------------|----------|------------|------------|-------------|----------|----------|
| Acid Number (AN) | mg KOH/g | ASTM D8045 | | 0.16 | 0.139 | 0.178 |

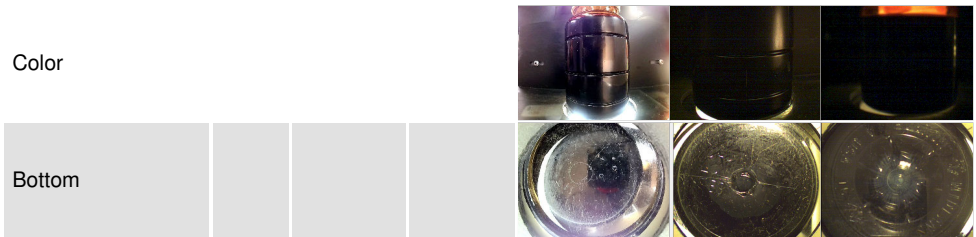
OIL ANALYSIS REPORT



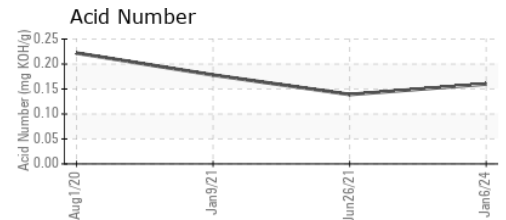
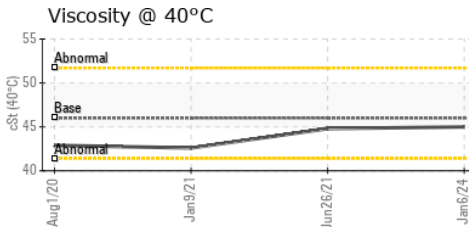
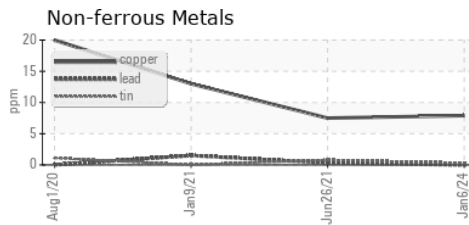
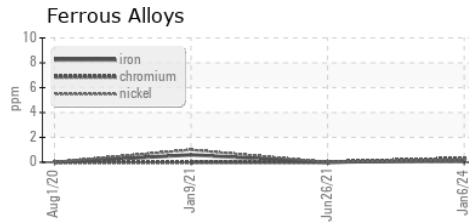
| PARAMETER | method | limit/base | current | history1 | history2 |
|------------------|--------|------------|---------|----------|----------|
| White Metal | scalar | *Visual | NONE | NONE | NONE |
| Yellow Metal | scalar | *Visual | NONE | NONE | NONE |
| Precipitate | scalar | *Visual | NONE | NONE | NONE |
| Silt | scalar | *Visual | NONE | NONE | NONE |
| Debris | scalar | *Visual | NONE | NONE | NONE |
| Sand/Dirt | scalar | *Visual | NONE | NONE | NONE |
| Appearance | scalar | *Visual | NORML | NORML | NORML |
| Odor | scalar | *Visual | NORML | NORML | NORML |
| Emulsified Water | scalar | *Visual | >0.8 | NEG | NEG |
| Free Water | scalar | *Visual | | NEG | NEG |

| FLUID PROPERTIES | method | limit/base | current | history1 | history2 |
|------------------|--------|--------------|-------------|----------|----------|
| Visc @ 40°C | cSt | ASTM D445 46 | 45.0 | 44.8 | 42.6 |

| SAMPLE IMAGES | method | limit/base | current | history1 | history2 |
|---------------|--------|------------|---------|----------|----------|
|---------------|--------|------------|---------|----------|----------|



GRAPHS



Certificate L2367

Laboratory : WearCheck USA - 501 Madison Ave., Cary, NC 27513
Sample No. : UCS06058778 **Recieved** : 11 Jan 2024
Lab Number : **06058778** **Diagnosed** : 14 Jan 2024
Unique Number : 10830160 **Diagnostician** : Don Baldrige
Test Package : IND 2

To discuss this sample report, contact Customer Service at 1-800-237-1369.

* - Denotes test methods that are outside of the ISO 17025 scope of accreditation.

Statements of conformity to specifications are based on the simple acceptance decision rule (JCGM 106:2012)

APPLIED AIR SYSTEMS

LAKEVILLE, MN
 US 55044
 Contact: SCOTT HARPER
 sc@appliedairsystems.com
 T: (952)388-3122
 F: