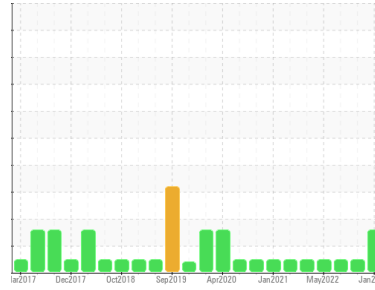




OIL ANALYSIS REPORT

Sample Rating Trend



WATER



Area
PGWS 100
Machine Id
BOSS HAW-VRU-193A - MARK WEST ENERGY HARRISON WEST
Component
Compressor

DIAGNOSIS

Recommendation

We advise that you follow the water drain-off procedure for this component. Resample at the next service interval to monitor.

Wear

All component wear rates are normal.

Contamination

There is a light concentration of water present in the oil.

Fluid Condition

The AN level is acceptable for this fluid. The condition of the oil is acceptable for the time in service.

SAMPLE INFORMATION

	method	limit/base	current	history1	history2
Sample Number	Client Info		UCH06058793	UCH05753666	UCH05680598
Sample Date	Client Info		04 Jan 2024	13 Jan 2023	17 Oct 2022
Machine Age	hrs	Client Info	38237	33768	32862
Oil Age	hrs	Client Info	2187	315	5155
Oil Changed	Client Info		Not Changed	Not Changed	Not Changed
Sample Status			ATTENTION	NORMAL	NORMAL

WEAR METALS

	method	limit/base	current	history1	history2
Iron	ppm	ASTM D5185m >50	3	2	6
Chromium	ppm	ASTM D5185m >10	<1	0	<1
Nickel	ppm	ASTM D5185m	<1	<1	0
Titanium	ppm	ASTM D5185m	<1	0	<1
Silver	ppm	ASTM D5185m	0	0	<1
Aluminum	ppm	ASTM D5185m >25	2	0	0
Lead	ppm	ASTM D5185m >25	0	1	0
Copper	ppm	ASTM D5185m >50	<1	<1	<1
Tin	ppm	ASTM D5185m >15	<1	1	<1
Vanadium	ppm	ASTM D5185m	0	0	1
Cadmium	ppm	ASTM D5185m	0	0	0

ADDITIVES

	method	limit/base	current	history1	history2
Boron	ppm	ASTM D5185m	0	0	0
Barium	ppm	ASTM D5185m	0	0	0
Molybdenum	ppm	ASTM D5185m	0	<1	<1
Manganese	ppm	ASTM D5185m	0	0	2
Magnesium	ppm	ASTM D5185m	0	1	0
Calcium	ppm	ASTM D5185m	0	2	4
Phosphorus	ppm	ASTM D5185m	1103	982	931
Zinc	ppm	ASTM D5185m	0	0	0
Sulfur	ppm	ASTM D5185m	1834	2017	1491

CONTAMINANTS

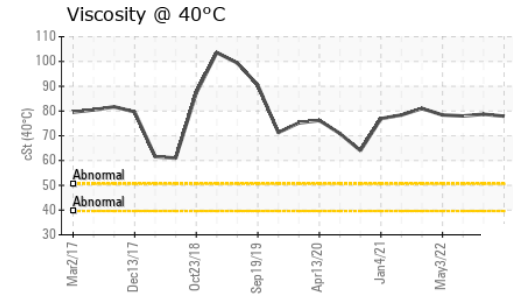
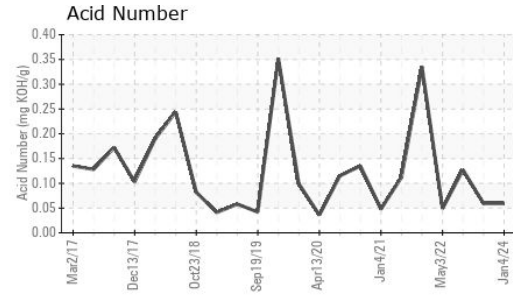
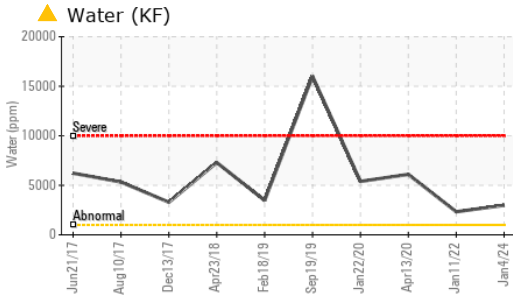
	method	limit/base	current	history1	history2
Silicon	ppm	ASTM D5185m >25	<1	<1	1
Sodium	ppm	ASTM D5185m	34	8	10
Potassium	ppm	ASTM D5185m >20	5	5	9
Water	%	ASTM D6304 >0.1	▲ 0.298	---	---
ppm Water	ppm	ASTM D6304 >1000	▲ 2980	---	---

FLUID DEGRADATION

	method	limit/base	current	history1	history2
Acid Number (AN)	mg KOH/g	ASTM D8045	0.059	0.059	0.127



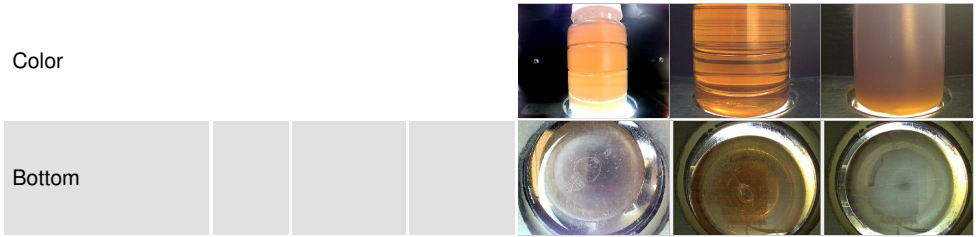
OIL ANALYSIS REPORT



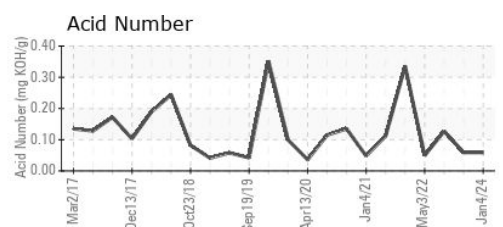
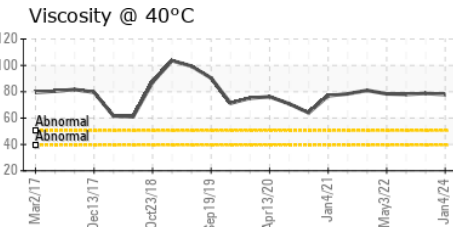
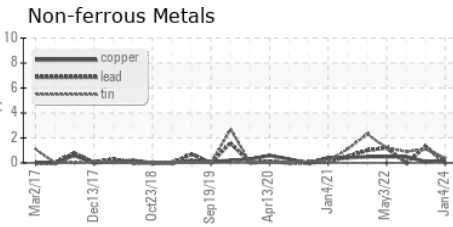
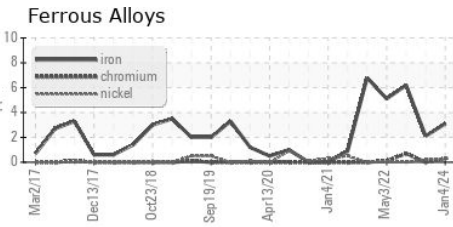
VISUAL	method	limit/base	current	history1	history2
White Metal	scalar	*Visual	NONE	NONE	NONE
Yellow Metal	scalar	*Visual	NONE	NONE	NONE
Precipitate	scalar	*Visual	NONE	NONE	NONE
Silt	scalar	*Visual	NONE	NONE	NONE
Debris	scalar	*Visual	NONE	NONE	NONE
Sand/Dirt	scalar	*Visual	NONE	NONE	NONE
Appearance	scalar	*Visual	NORML	NORML	NORML
Odor	scalar	*Visual	NORML	NORML	NORML
Emulsified Water	scalar	*Visual	>0.1	NEG	NEG
Free Water	scalar	*Visual	NEG	NEG	NEG

FLUID PROPERTIES	method	limit/base	current	history1	history2
Visc @ 40°C	cSt	ASTM D445	77.9	78.7	78.0

SAMPLE IMAGES	method	limit/base	current	history1	history2
---------------	--------	------------	---------	----------	----------



GRAPHS



Certificate L2367

Laboratory : WearCheck USA - 501 Madison Ave., Cary, NC 27513
 Sample No. : UCH06058793
 Lab Number : 06058793
 Unique Number : 10830175
 Test Package : IND 2 (Additional Tests: KF)

To discuss this sample report, contact Customer Service at 1-800-237-1369.

* - Denotes test methods that are outside of the ISO 17025 scope of accreditation.

Statements of conformity to specifications are based on the simple acceptance decision rule (JCGM 106:2012)

PPC LUBRICANTS

150 BONNIE DR
 BUTLER, PA
 US 16001

Contact: SHAWN SMITH
 ssmith@ppclubricants.com

T: (888)437-5823
 F: (866)789-5823