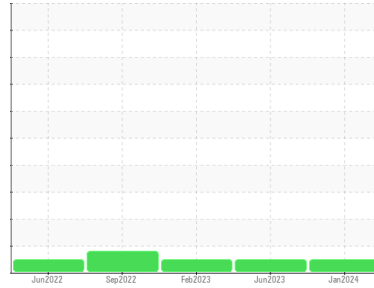




# OIL ANALYSIS REPORT

Sample Rating Trend

**NORMAL**



Area  
**[W48387]**  
 Machine Id  
**JOHN DEERE 824L 1DW824LXKNL713524**  
 Component  
**Hydraulic System**  
 Fluid  
**JOHN DEERE HYDRAU (--- GAL)**

## DIAGNOSIS

### Recommendation

Resample at the next service interval to monitor.

### Wear

All component wear rates are normal.

### Contamination

The system cleanliness is acceptable for your target ISO 4406 cleanliness code. The system and fluid cleanliness is acceptable.

### Fluid Condition

The AN level is acceptable for this fluid. The condition of the oil is suitable for further service.

## SAMPLE INFORMATION

	method	limit/base	current	history1	history2
Sample Number	Client Info		<b>JR0200285</b>	JR0165587	JR0147864
Sample Date	Client Info		<b>09 Jan 2024</b>	13 Jun 2023	10 Feb 2023
Machine Age	hrs	Client Info	<b>2471</b>	1992	1440
Oil Age	hrs	Client Info	<b>0</b>	0	0
Oil Changed	Client Info		<b>Not Changed</b>	Not Changed	Not Changed
Sample Status			<b>NORMAL</b>	NORMAL	NORMAL

## CONTAMINATION

	method	limit/base	current	history1	history2
Water	WC Method	>0.1	<b>NEG</b>	NEG	NEG

## WEAR METALS

	method	limit/base	current	history1	history2
PQ	ASTM D8184		<b>14</b>	13	10
Iron	ppm	ASTM D5185m >20	<b>4</b>	5	4
Chromium	ppm	ASTM D5185m >10	<b>&lt;1</b>	1	<1
Nickel	ppm	ASTM D5185m >10	<b>0</b>	0	0
Titanium	ppm	ASTM D5185m	<b>0</b>	0	0
Silver	ppm	ASTM D5185m	<b>0</b>	0	0
Aluminum	ppm	ASTM D5185m >10	<b>0</b>	0	0
Lead	ppm	ASTM D5185m >10	<b>0</b>	<1	<1
Copper	ppm	ASTM D5185m >75	<b>4</b>	5	4
Tin	ppm	ASTM D5185m >10	<b>0</b>	0	0
Vanadium	ppm	ASTM D5185m	<b>0</b>	0	0
Cadmium	ppm	ASTM D5185m	<b>0</b>	0	0

## ADDITIVES

	method	limit/base	current	history1	history2
Boron	ppm	ASTM D5185m	<b>0</b>	0	0
Barium	ppm	ASTM D5185m	<b>0</b>	2	0
Molybdenum	ppm	ASTM D5185m	<b>0</b>	<1	<1
Manganese	ppm	ASTM D5185m	<b>0</b>	0	0
Magnesium	ppm	ASTM D5185m	<b>0</b>	2	2
Calcium	ppm	ASTM D5185m 87	<b>94</b>	93	96
Phosphorus	ppm	ASTM D5185m 727	<b>639</b>	615	589
Zinc	ppm	ASTM D5185m 900	<b>841</b>	833	809
Sulfur	ppm	ASTM D5185m 1500	<b>1654</b>	1812	1739

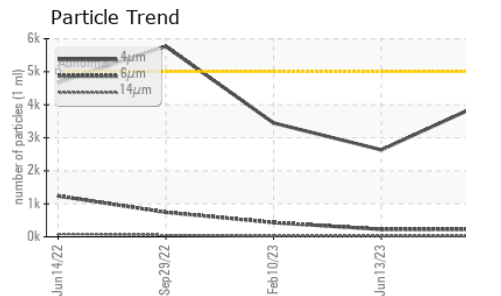
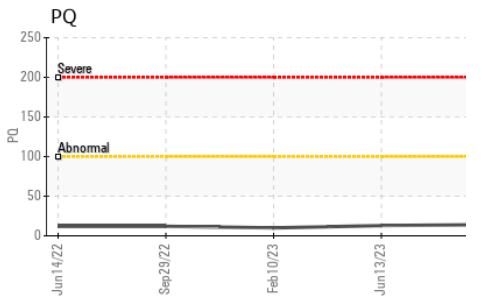
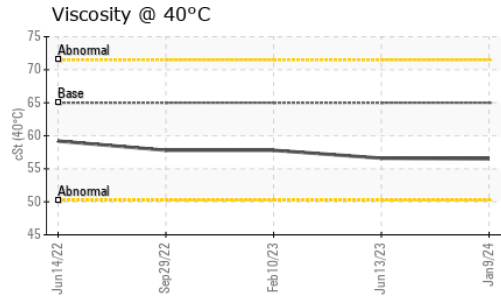
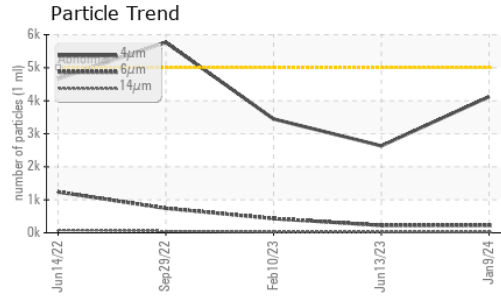
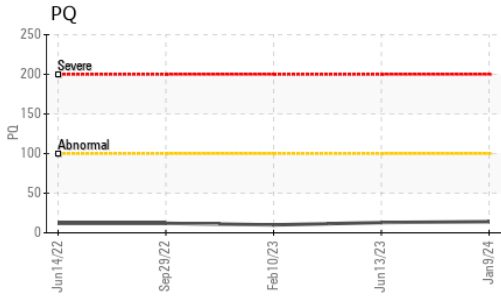
## CONTAMINANTS

	method	limit/base	current	history1	history2
Silicon	ppm	ASTM D5185m >20	<b>5</b>	5	9
Sodium	ppm	ASTM D5185m	<b>2</b>	0	<1
Potassium	ppm	ASTM D5185m >20	<b>0</b>	3	3

## FLUID CLEANLINESS

	method	limit/base	current	history1	history2
Particles >4µm	ASTM D7647	>5000	<b>4124</b>	2633	3447
Particles >6µm	ASTM D7647	>1300	<b>227</b>	226	431
Particles >14µm	ASTM D7647	>160	<b>22</b>	22	26
Particles >21µm	ASTM D7647	>40	<b>7</b>	8	7
Particles >38µm	ASTM D7647	>10	<b>1</b>	1	1
Particles >71µm	ASTM D7647	>3	<b>0</b>	0	0
Oil Cleanliness	ISO 4406 (c)	>19/17/14	<b>19/15/12</b>	19/15/12	19/16/12

# OIL ANALYSIS REPORT

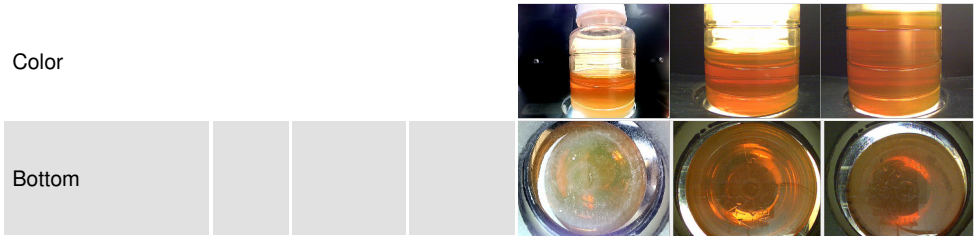


FLUID DEGRADATION		method	limit/base	current	history1	history2
Acid Number (AN)	mg KOH/g	ASTM D8045	1.0	<b>0.56</b>	0.65	0.51

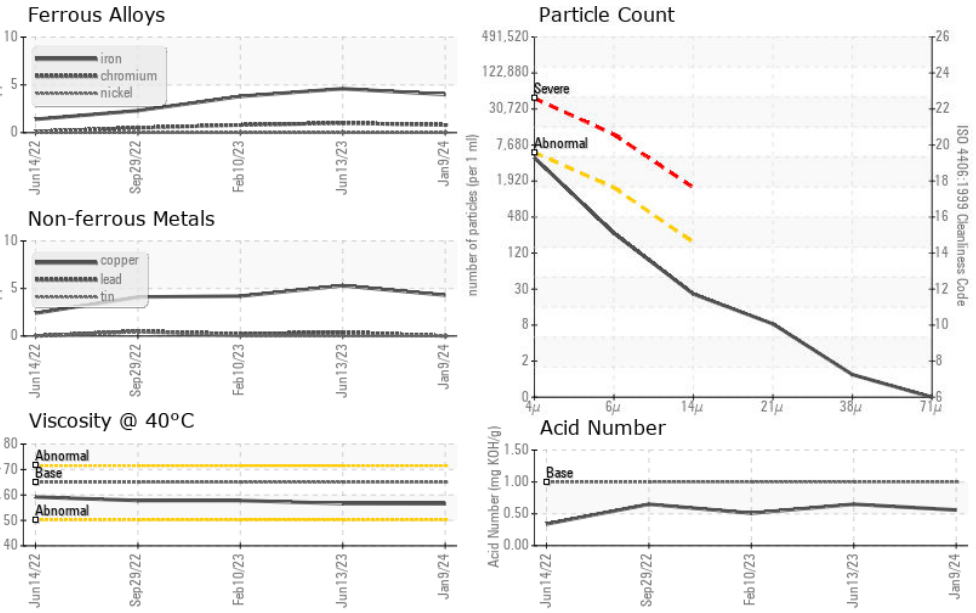
VISUAL		method	limit/base	current	history1	history2
White Metal	scalar	*Visual	NONE	<b>NONE</b>	NONE	NONE
Yellow Metal	scalar	*Visual	NONE	<b>NONE</b>	NONE	NONE
Precipitate	scalar	*Visual	NONE	<b>NONE</b>	NONE	NONE
Silt	scalar	*Visual	NONE	<b>NONE</b>	NONE	NONE
Debris	scalar	*Visual	NONE	<b>NONE</b>	NONE	NONE
Sand/Dirt	scalar	*Visual	NONE	<b>NONE</b>	NONE	NONE
Appearance	scalar	*Visual	NORML	<b>NORML</b>	NORML	NORML
Odor	scalar	*Visual	NORML	<b>NORML</b>	NORML	NORML
Emulsified Water	scalar	*Visual	>0.1	<b>NEG</b>	NEG	NEG
Free Water	scalar	*Visual		<b>NEG</b>	NEG	NEG

FLUID PROPERTIES		method	limit/base	current	history1	history2
Visc @ 40°C	cSt	ASTM D445	65	<b>56.5</b>	56.6	57.8

### SAMPLE IMAGES



### GRAPHS



**Laboratory** : WearCheck USA - 501 Madison Ave., Cary, NC 27513  
**Sample No.** : JR0200285 **Received** : 12 Jan 2024  
**Lab Number** : 06059185 **Diagnosed** : 15 Jan 2024  
**Unique Number** : 10830567 **Diagnostician** : Wes Davis  
**Test Package** : CONST ( Additional Tests: PQ )

**JRE - ASHLAND**  
 11047 LEADBETTER RD  
 ASHLAND, VA  
 US 23005  
 Contact: DAVID ZIEG  
 dzieg@jamesriverequipment.com  
 T: (804)798-6001  
 F: (804)798-0292

To discuss this sample report, contact Customer Service at 1-800-237-1369.  
 \* - Denotes test methods that are outside of the ISO 17025 scope of accreditation.  
 Statements of conformity to specifications are based on the simple acceptance decision rule (JCGM 106:2012)