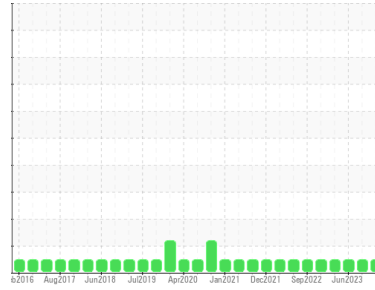




# OIL ANALYSIS REPORT

Sample Rating Trend



**NORMAL**



Area  
**ULTRACHEM 32/46 [57983]**  
 Machine Id  
**ATLAS COPCO CAI363363 - OMAHA TRACK**  
 Component  
**Compressor**

## DIAGNOSIS

### Recommendation

Resample at the next service interval to monitor.

### Wear

All component wear rates are normal.

### Contamination

There is no indication of any contamination in the oil.

### Fluid Condition

The AN level is acceptable for this fluid. The condition of the oil is suitable for further service.

## SAMPLE INFORMATION

	method	limit/base	current	history1	history2
Sample Number	Client Info		<b>UCH06061309</b>	UCH05978376	UCH05889224
Sample Date	Client Info		<b>19 Dec 2023</b>	20 Sep 2023	20 Jun 2023
Machine Age	hrs	Client Info	<b>67153</b>	65179	61138
Oil Age	hrs	Client Info	<b>5862</b>	4047	1847
Oil Changed	Client Info		<b>Not Changed</b>	Not Changed	Not Changed
Sample Status			<b>NORMAL</b>	NORMAL	NORMAL

## CONTAMINATION

	method	limit/base	current	history1	history2
Water	WC Method	>0.1	<b>NEG</b>	NEG	NEG

## WEAR METALS

	method	limit/base	current	history1	history2
Iron	ppm	ASTM D5185m >50	<b>&lt;1</b>	<1	<1
Chromium	ppm	ASTM D5185m >5	<b>&lt;1</b>	0	0
Nickel	ppm	ASTM D5185m	<b>0</b>	0	0
Titanium	ppm	ASTM D5185m	<b>&lt;1</b>	<1	0
Silver	ppm	ASTM D5185m	<b>0</b>	0	0
Aluminum	ppm	ASTM D5185m >15	<b>2</b>	0	0
Lead	ppm	ASTM D5185m >65	<b>0</b>	0	<1
Copper	ppm	ASTM D5185m >65	<b>3</b>	2	1
Tin	ppm	ASTM D5185m >10	<b>&lt;1</b>	0	0
Vanadium	ppm	ASTM D5185m	<b>0</b>	0	0
Cadmium	ppm	ASTM D5185m	<b>0</b>	0	0

## ADDITIVES

	method	limit/base	current	history1	history2
Boron	ppm	ASTM D5185m 1	<b>0</b>	0	0
Barium	ppm	ASTM D5185m 0.3	<b>0</b>	20	9
Molybdenum	ppm	ASTM D5185m 0	<b>0</b>	0	0
Manganese	ppm	ASTM D5185m 0	<b>0</b>	0	0
Magnesium	ppm	ASTM D5185m 0	<b>&lt;1</b>	4	<1
Calcium	ppm	ASTM D5185m 0.5	<b>6</b>	5	<1
Phosphorus	ppm	ASTM D5185m 536	<b>334</b>	285	321
Zinc	ppm	ASTM D5185m 0.2	<b>723</b>	502	159
Sulfur	ppm	ASTM D5185m 649	<b>219</b>	252	332

## CONTAMINANTS

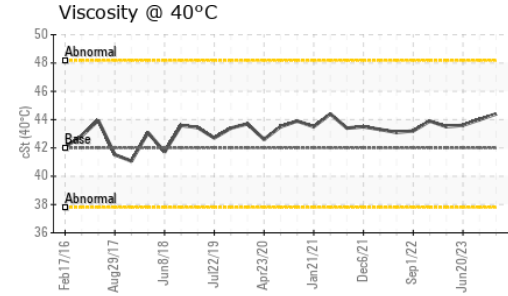
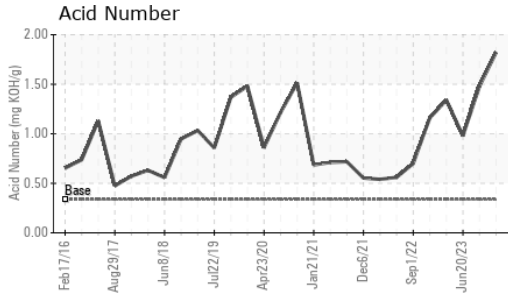
	method	limit/base	current	history1	history2
Silicon	ppm	ASTM D5185m >35	<b>5</b>	4	2
Sodium	ppm	ASTM D5185m	<b>70</b>	52	22
Potassium	ppm	ASTM D5185m >20	<b>8</b>	3	4

## FLUID DEGRADATION

	method	limit/base	current	history1	history2
Acid Number (AN)	mg KOH/g	ASTM D8045 0.337	<b>1.82</b>	1.48	0.98



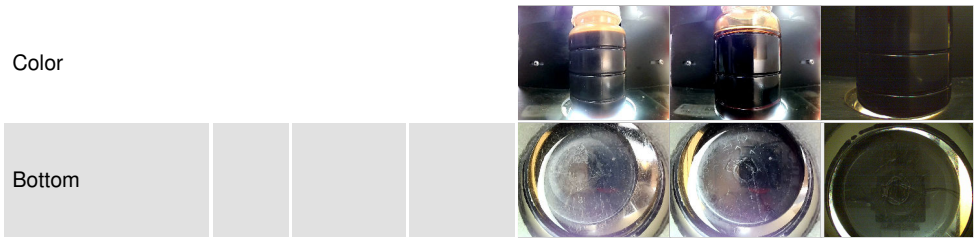
# OIL ANALYSIS REPORT



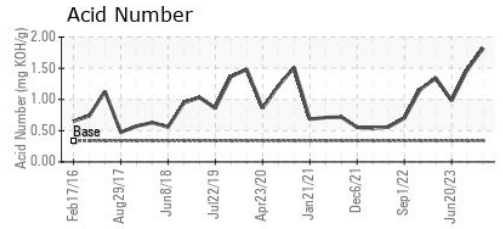
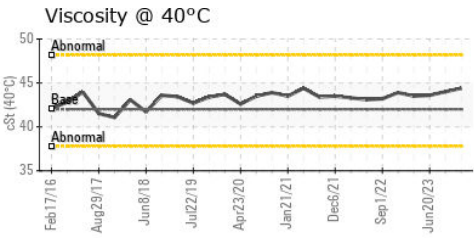
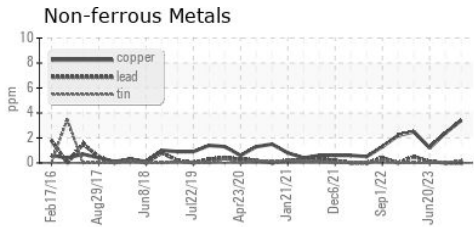
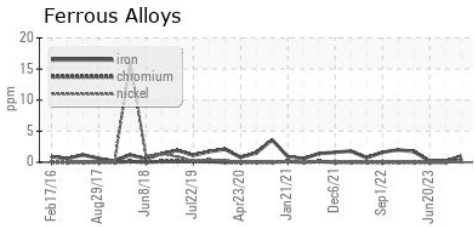
VISUAL	method	limit/base	current	history1	history2
White Metal	scalar	*Visual	NONE	NONE	NONE
Yellow Metal	scalar	*Visual	NONE	NONE	NONE
Precipitate	scalar	*Visual	NONE	NONE	NONE
Silt	scalar	*Visual	NONE	NONE	NONE
Debris	scalar	*Visual	NONE	NONE	NONE
Sand/Dirt	scalar	*Visual	NONE	NONE	NONE
Appearance	scalar	*Visual	NORML	NORML	NORML
Odor	scalar	*Visual	NORML	NORML	NORML
Emulsified Water	scalar	*Visual	>0.1	NEG	NEG
Free Water	scalar	*Visual		NEG	NEG

FLUID PROPERTIES	method	limit/base	current	history1	history2	
Visc @ 40°C	cSt	ASTM D445	42.0	<b>44.4</b>	44.0	43.6

SAMPLE IMAGES	method	limit/base	current	history1	history2
---------------	--------	------------	---------	----------	----------



## GRAPHS



**Laboratory** : WearCheck USA - 501 Madison Ave., Cary, NC 27513  
**Sample No.** : UCH06061309 **Received** : 16 Jan 2024  
**Lab Number** : **06061309** **Diagnosed** : 17 Jan 2024  
**Unique Number** : 10832691 **Diagnostician** : Jonathan Hester  
**Test Package** : IND 2

**JOHN HENRY FOSTER COMPANY**  
 4700 LEBOURGET STREET  
 SAINT LOUIS, MO  
 US 63134  
 Contact: RACHEL VON HATTEN  
 rvonhatten@jhfc.com  
 T: (314)593-1267  
 F: (314)874-0965

To discuss this sample report, contact Customer Service at 1-800-237-1369.  
 \* - Denotes test methods that are outside of the ISO 17025 scope of accreditation.  
 Statements of conformity to specifications are based on the simple acceptance decision rule (JCGM 106:2012)