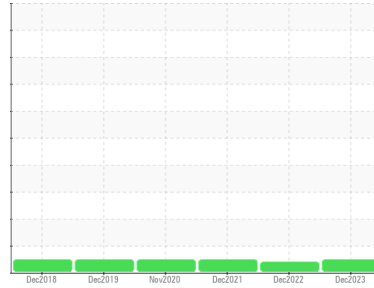




FUEL REPORT

Sample Rating Trend

NORMAL



Area
[W126861]
 Machine Id
3000095895 - PEAK RESOURCES
 Component
Diesel Fuel
 Fluid
No.2 DIESEL FUEL (ULTRALOW SULPHUR) (2300 GAL)

DIAGNOSIS

Recommendation

All laboratory tests indicate that this sample meets specifications for No.2 ultra-low-sulfur diesel fuel.

Corrosion

All metal levels are normal indicating no corrosion in the system.

Contaminants

The water content is negligible. There is no Bacteria, Yeast and/or Fungus indicated in the sample. There is no indication of any contamination in the fuel.

Fuel Condition

Sulfur value derived by ASTM D5453 method for ULSD validation. Sulfur level is acceptable for ULSD specification.

SAMPLE INFORMATION		method	limit/base	current	history1	history2
Sample Number	Client Info			WC0797441	WC0764134	WC0616312
Sample Date	Client Info			04 Dec 2023	02 Dec 2022	14 Dec 2021
Machine Age	hrs	Client Info		0	0	0
Sample Status				NORMAL	ABNORMAL	NORMAL

PHYSICAL PROPERTIES		method	limit/base	current	history1	history2
ASTM Color	scalar	*ASTM D1500		L4.5	L5.0	L4.5
Visc @ 40°C	cSt	ASTM D445	3.0	2.53	2.57	2.6

SULFUR CONTENT		method	limit/base	current	history1	history2
Sulfur	ppm	ASTM D5185m	10	0	0	5
Sulfur (UVF)	ppm	ASTM D5453		9	10	11

CONTAMINANTS		method	limit/base	current	history1	history2
Silicon	ppm	ASTM D5185m	<1.0	<1	0	0
Sodium	ppm	ASTM D5185m	<0.1	0	0	0
Potassium	ppm	ASTM D5185m	<0.1	0	0	0
Water	%	ASTM D6304	<0.05	0.006	0.003	0.004
ppm Water	ppm	ASTM D6304	<500	60	29.9	42.1
% Gasoline	%	*In-House	<0.50	0.0	0.0	0.0
% Biodiesel	%	*In-House	<20.0	0.0	1.1	1.2

FLUID CLEANLINESS		method	limit/base	current	history1	history2
Particles >4µm		ASTM D7647	>2500	---	70023	469
Particles >6µm		ASTM D7647	>640	---	23295	164
Particles >14µm		ASTM D7647	>80	---	1746	22
Particles >21µm		ASTM D7647	>20	---	461	5
Particles >38µm		ASTM D7647	>4	---	24	0
Particles >71µm		ASTM D7647	>3	---	1	0
Oil Cleanliness		ISO 4406 (c)	>18/16/13	---	23/22/18	16/15/12

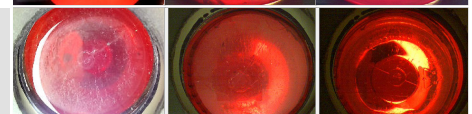
HEAVY METALS		method	limit/base	current	history1	history2
Aluminum	ppm	ASTM D5185m	<0.1	0	0	0
Nickel	ppm	ASTM D5185m	<0.1	0	0	<1
Lead	ppm	ASTM D5185m	<0.1	0	0	<1
Vanadium	ppm	ASTM D5185m	<0.1	<1	0	0
Iron	ppm	ASTM D5185m	<0.1	0	0	0
Calcium	ppm	ASTM D5185m	<0.1	0	0	0
Magnesium	ppm	ASTM D5185m	<0.1	0	0	<1
Phosphorus	ppm	ASTM D5185m	<0.1	0	0	2
Zinc	ppm	ASTM D5185m	<0.1	0	0	0

SAMPLE IMAGES		method	limit/base	current	history1	history2
---------------	--	--------	------------	---------	----------	----------

Color

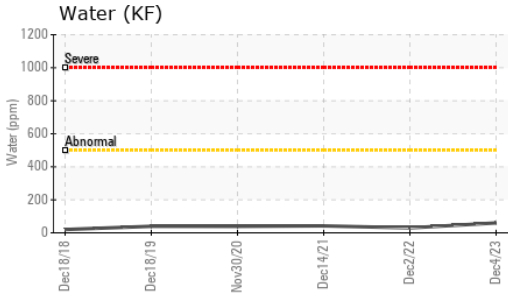


Bottom

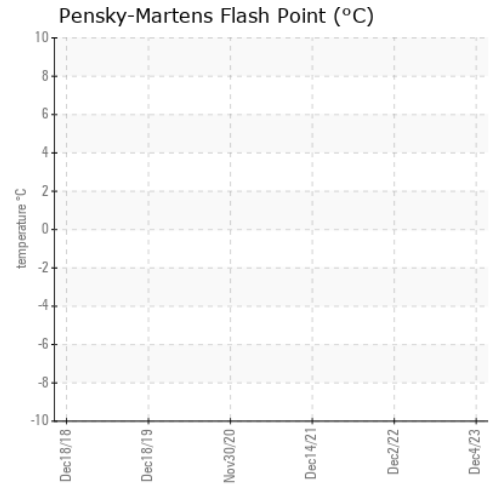
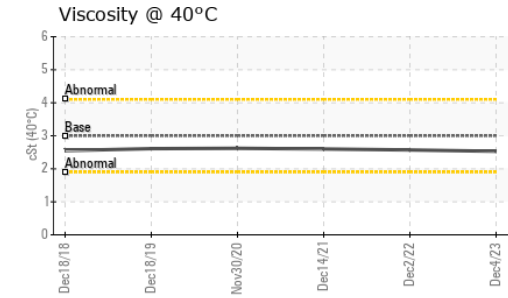




FUEL REPORT



GRAPHS



Certificate L2367

Laboratory : WearCheck USA - 501 Madison Ave., Cary, NC 27513
Sample No. : WC0797441 **Received** : 16 Jan 2024
Lab Number : 06061598 **Diagnosed** : 23 Jan 2024
Unique Number : 10832980 **Diagnostician** : Doug Bogart
Test Package : DF-5 (Additional Tests: Screen)

To discuss this sample report, contact Customer Service at 1-800-237-1369.

* - Denotes test methods that are outside of the ISO 17025 scope of accreditation.

Statements of conformity to specifications are based on the simple acceptance decision rule (JCGM 106:2012)

NATIONAL POWER CORP
 4541 PRESLYN DR
 RALEIGH, NC
 US 27616
 Contact: BRANDON RICE
 brandon.rice@natpow.com
 T:
 F: (919)790-9714