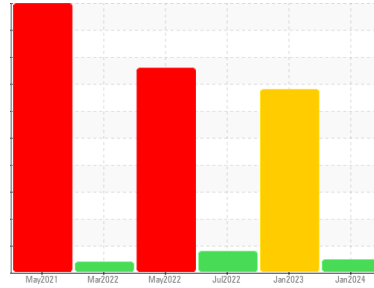




# OIL ANALYSIS REPORT

Sample Rating Trend



**NORMAL**



Machine Id  
**LIM4\_U43 LIM4\_U43\_P43**  
 Component  
**Drive End Pump**  
 Fluid  
**ROYAL PURPLE SYNFILM GT 32 (--- GAL)**

## DIAGNOSIS

### Recommendation

Resample at the next service interval to monitor.

### Wear

All component wear rates are normal.

### Contamination

The water content is negligible. There is no indication of any contamination in the oil.

### Fluid Condition

The AN level is acceptable for this fluid. The condition of the oil is suitable for further service.

## SAMPLE INFORMATION

method	limit/base	current	history1	history2
Sample Number	Client Info	<b>RP0029450</b>	RP0021258	RP0021622
Sample Date	Client Info	<b>08 Jan 2024</b>	16 Jan 2023	19 Jul 2022
Machine Age	hrs	Client Info	<b>0</b>	0
Oil Age	hrs	Client Info	<b>0</b>	0
Oil Changed	Client Info	<b>N/A</b>	N/A	N/A
Sample Status		<b>NORMAL</b>	SEVERE	ABNORMAL

## WEAR METALS

method	limit/base	current	history1	history2	
Iron	ppm	ASTM D5185m >90	<b>0</b>	<1	<1
Chromium	ppm	ASTM D5185m >5	<b>0</b>	0	0
Nickel	ppm	ASTM D5185m >5	<b>0</b>	0	<1
Titanium	ppm	ASTM D5185m >3	<b>0</b>	0	0
Silver	ppm	ASTM D5185m >3	<b>0</b>	0	<1
Aluminum	ppm	ASTM D5185m >7	<b>1</b>	<1	2
Lead	ppm	ASTM D5185m >12	<b>&lt;1</b>	▲ 12	6
Copper	ppm	ASTM D5185m >30	<b>18</b>	● 128	▲ 48
Tin	ppm	ASTM D5185m >9	<b>2</b>	4	2
Vanadium	ppm	ASTM D5185m	<b>0</b>	0	0
Cadmium	ppm	ASTM D5185m	<b>0</b>	0	0

## ADDITIVES

method	limit/base	current	history1	history2	
Boron	ppm	ASTM D5185m	<b>0</b>	0	<1
Barium	ppm	ASTM D5185m	<b>0</b>	0	0
Molybdenum	ppm	ASTM D5185m	<b>0</b>	0	0
Manganese	ppm	ASTM D5185m	<b>&lt;1</b>	<1	0
Magnesium	ppm	ASTM D5185m	<b>87</b>	80	83
Calcium	ppm	ASTM D5185m	<b>4</b>	1	2
Phosphorus	ppm	ASTM D5185m	<b>0</b>	30	2
Zinc	ppm	ASTM D5185m	<b>3</b>	3	0

## CONTAMINANTS

method	limit/base	current	history1	history2	
Silicon	ppm	ASTM D5185m >60	<b>19</b>	4	2
Sodium	ppm	ASTM D5185m	<b>0</b>	<1	0
Potassium	ppm	ASTM D5185m >20	<b>0</b>	0	0
Water	%	ASTM D6304 >.1	<b>0.017</b>	0.010	0.039
ppm Water	ppm	ASTM D6304 >1000	<b>174</b>	106.7	390.8

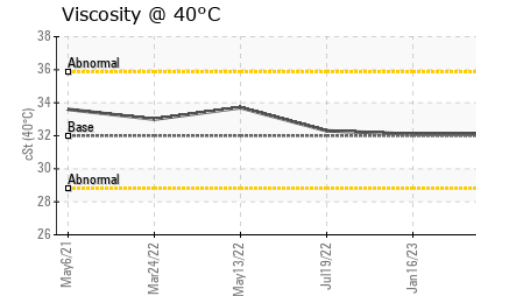
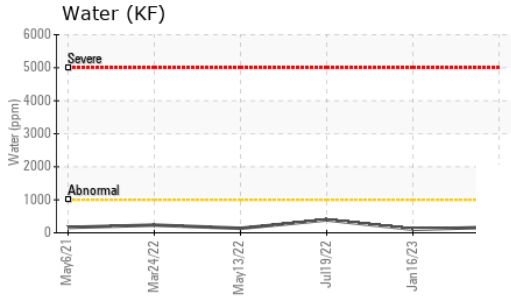
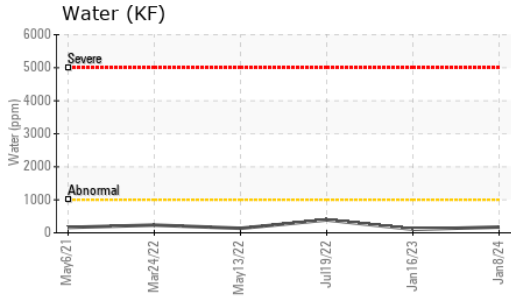
## FLUID DEGRADATION

method	limit/base	current	history1	history2	
Acid Number (AN)	mg KOH/g	ASTM D8045	<b>0.44</b>	0.34	0.41

## VISUAL

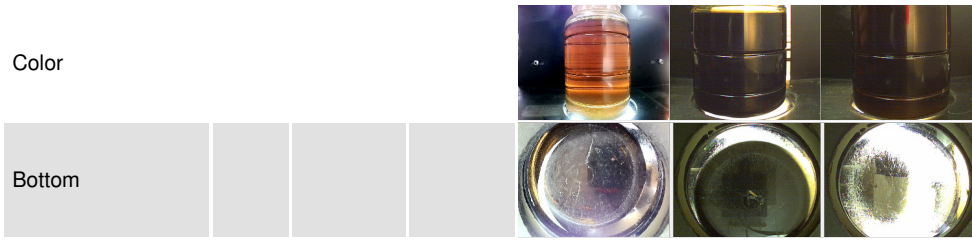
method	limit/base	current	history1	history2	
White Metal	scalar	*Visual NONE	<b>NONE</b>	LIGHT	NONE
Yellow Metal	scalar	*Visual NONE	<b>NONE</b>	NONE	NONE
Precipitate	scalar	*Visual NONE	<b>NONE</b>	NONE	NONE
Silt	scalar	*Visual NONE	<b>NONE</b>	NONE	NONE
Debris	scalar	*Visual NONE	<b>LIGHT</b>	NONE	LIGHT
Sand/Dirt	scalar	*Visual NONE	<b>NONE</b>	NONE	NONE
Appearance	scalar	*Visual NORML	<b>NORML</b>	NORML	NORML
Odor	scalar	*Visual NORML	<b>NORML</b>	NORML	NORML
Emulsified Water	scalar	*Visual >.1	<b>NEG</b>	NEG	NEG
Free Water	scalar	*Visual	<b>NEG</b>	NEG	NEG

# OIL ANALYSIS REPORT

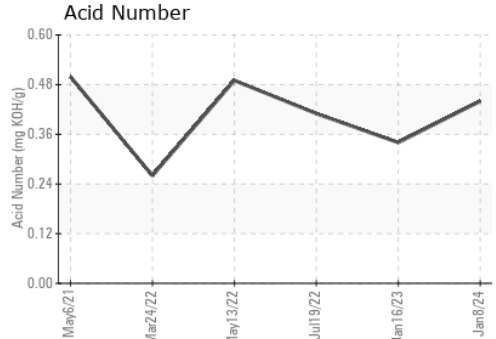
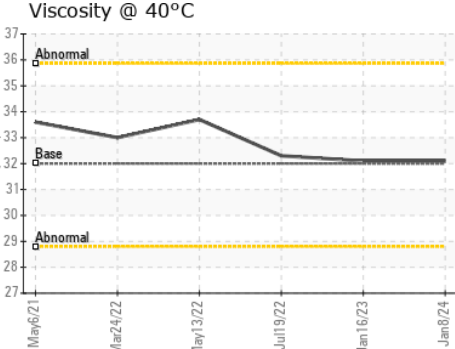
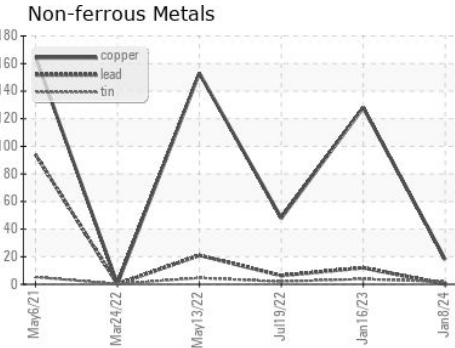
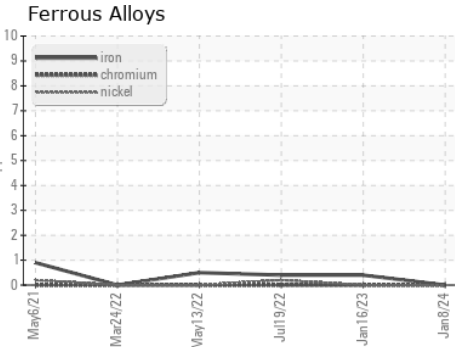


FLUID PROPERTIES		method	limit/base	current	history1	history2
Visc @ 40°C	cSt	ASTM D445	32	<b>32.1</b>	32.1	32.3

SAMPLE IMAGES		method	limit/base	current	history1	history2
---------------	--	--------	------------	---------	----------	----------



## GRAPHS



Certificate L2367

**Laboratory** : WearCheck USA - 501 Madison Ave., Cary, NC 27513  
**Sample No.** : RP0029450 **Received** : 16 Jan 2024  
**Lab Number** : **06062087** **Diagnosed** : 18 Jan 2024  
**Unique Number** : 10833469 **Diagnostician** : Jonathan Hester  
**Test Package** : PLANT

**ENERGY TRANSFER - LIMA**  
 1520 BUCKEYE RD  
 LIMA, OH  
 US 45804

Contact: ANDREW WYDERKA  
 andrew.wyderka@energytransfer.com

T: (419)618-1505  
 F:

To discuss this sample report, contact Customer Service at 1-800-237-1369.

\* - Denotes test methods that are outside of the ISO 17025 scope of accreditation.

Statements of conformity to specifications are based on the simple acceptance decision rule (JCGM 106:2012)