



OIL ANALYSIS REPORT

Sample Rating Trend

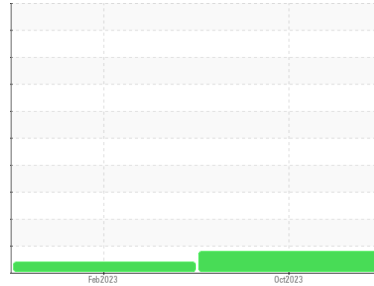
ADDITIVES



Machine Id
VRU 1 PUMP 1

Component
Drive End Screw Compressor

Fluid
ROYAL PURPLE SYNFILM GT 100 (--- GAL)



DIAGNOSIS

Recommendation

Resample at the next service interval to monitor.

Wear

All component wear rates are normal.

Contamination

There is no indication of any contamination in the oil.

Fluid Condition

Additive levels indicate the addition of a different brand, or type of oil. The AN level is acceptable for this fluid.

SAMPLE INFORMATION

	method	limit/base	current	history1	history2
Sample Number	Client Info		RP0033513	RP0027834	---
Sample Date	Client Info		30 Oct 2023	16 Feb 2023	---
Machine Age	mths	Client Info	0	0	---
Oil Age	mths	Client Info	0	0	---
Oil Changed	Client Info		N/A	N/A	---
Sample Status			ATTENTION	ATTENTION	---

WEAR METALS

	method	limit/base	current	history1	history2
Iron	ppm	ASTM D5185m >60	0	29	---
Chromium	ppm	ASTM D5185m >4	0	<1	---
Nickel	ppm	ASTM D5185m	0	0	---
Titanium	ppm	ASTM D5185m	0	<1	---
Silver	ppm	ASTM D5185m	0	0	---
Aluminum	ppm	ASTM D5185m >5	0	<1	---
Lead	ppm	ASTM D5185m >10	0	0	---
Copper	ppm	ASTM D5185m >30	2	<1	---
Tin	ppm	ASTM D5185m >15	0	0	---
Vanadium	ppm	ASTM D5185m	0	<1	---
Cadmium	ppm	ASTM D5185m	0	0	---

ADDITIVES

	method	limit/base	current	history1	history2
Boron	ppm	ASTM D5185m	0	0	---
Barium	ppm	ASTM D5185m	0	0	---
Molybdenum	ppm	ASTM D5185m	0	<1	---
Manganese	ppm	ASTM D5185m	<1	1	---
Magnesium	ppm	ASTM D5185m 90	<1	78	---
Calcium	ppm	ASTM D5185m	<1	0	---
Phosphorus	ppm	ASTM D5185m 35	323	<1	---
Zinc	ppm	ASTM D5185m	2	2	---

CONTAMINANTS

	method	limit/base	current	history1	history2
Silicon	ppm	ASTM D5185m >50	16	3	---
Sodium	ppm	ASTM D5185m	0	2	---
Potassium	ppm	ASTM D5185m >20	0	3	---
Water	%	ASTM D6304 >0.1	0.002	0.049	---
ppm Water	ppm	ASTM D6304 >1000	25	490	---

FLUID DEGRADATION

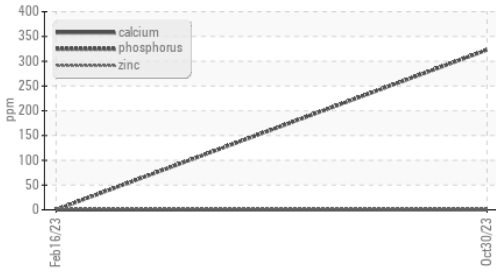
	method	limit/base	current	history1	history2
Acid Number (AN)	mg KOH/g	ASTM D8045 0.388	0.19	0.32	---

VISUAL

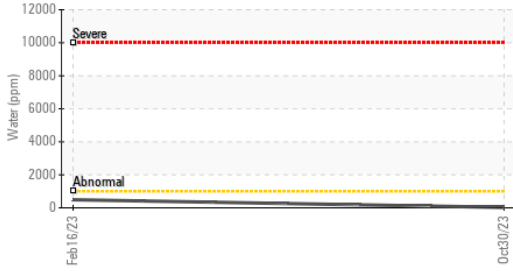
	method	limit/base	current	history1	history2
White Metal	scalar	*Visual NONE	NONE	NONE	---
Yellow Metal	scalar	*Visual NONE	NONE	NONE	---
Precipitate	scalar	*Visual NONE	NONE	NONE	---
Silt	scalar	*Visual NONE	NONE	LIGHT	---
Debris	scalar	*Visual NONE	NONE	VLITE	---
Sand/Dirt	scalar	*Visual NONE	NONE	NONE	---
Appearance	scalar	*Visual NORML	NORML	NORML	---
Odor	scalar	*Visual NORML	NORML	NORML	---
Emulsified Water	scalar	*Visual >0.1	NEG	NEG	---
Free Water	scalar	*Visual	NEG	NEG	---

OIL ANALYSIS REPORT

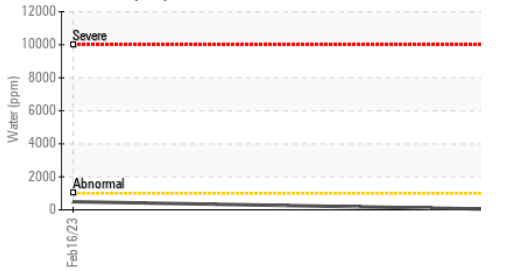
▲ Additives



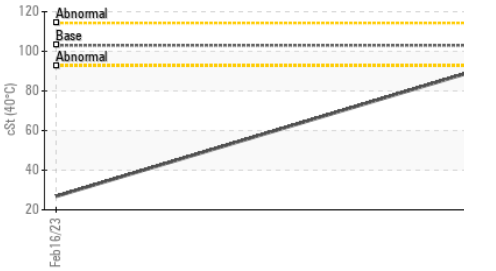
Water (KF)



Water (KF)



Viscosity @ 40°C



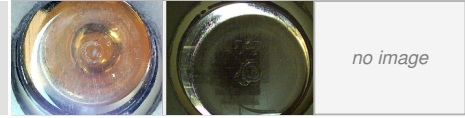
FLUID PROPERTIES	method	limit/base	current	history1	history2
Visc @ 40°C	cSt	ASTM D445 103	92.0	▲ 26.8	---

SAMPLE IMAGES	method	limit/base	current	history1	history2
---------------	--------	------------	---------	----------	----------

Color

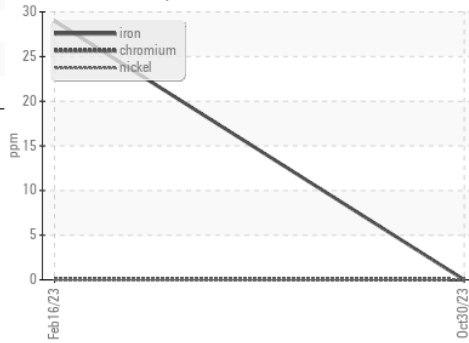


Bottom

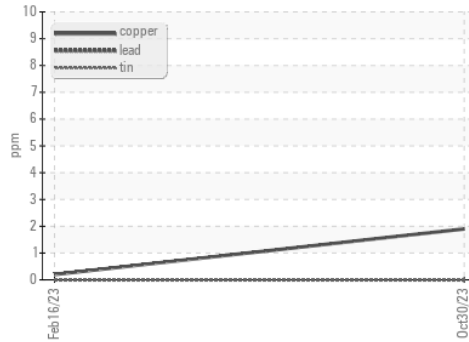


GRAPHS

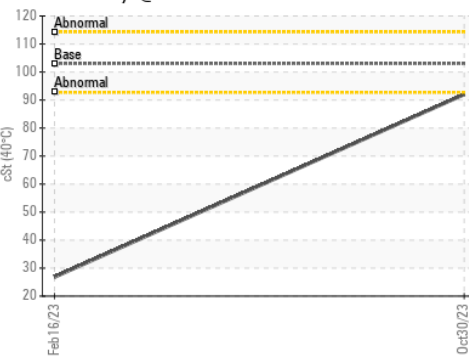
Ferrous Alloys



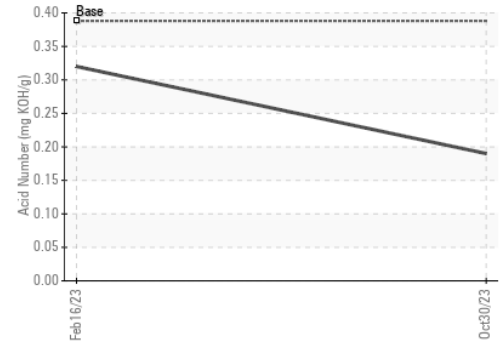
Non-ferrous Metals



Viscosity @ 40°C



Acid Number



Certificate L2367

Laboratory : WearCheck USA - 501 Madison Ave., Cary, NC 27513
Sample No. : RP0033513 **Recieved** : 17 Jan 2024
Lab Number : 06062885 **Diagnosed** : 19 Jan 2024
Unique Number : 10834267 **Diagnostician** : Don Baldrige
Test Package : IND 2

MAGELLAN MIDSTREAM - EH TERMINAL
 7901 WALLISVILLE RD
 HOUSTON, TX
 US 77029
 Contact: LOGAN SEYL
 logan.seyl@magellanlp.com

To discuss this sample report, contact Customer Service at 1-800-237-1369.

* - Denotes test methods that are outside of the ISO 17025 scope of accreditation.

Statements of conformity to specifications are based on the simple acceptance decision rule (JCGM 106:2012)

T:
F: