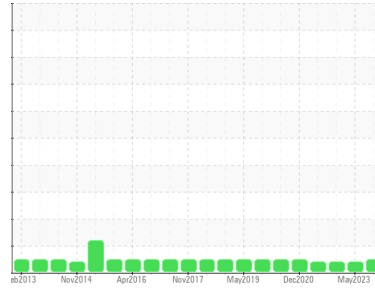




OIL ANALYSIS REPORT

Sample Rating Trend



NORMAL



Area
AREA II [500308672]
 Machine Id
PHILADELPHIA A8023 (S/N AD-20-2)
 Component
Gearbox
 Fluid
ROYAL PURPLE SYNFILM 150 (6 GAL)

DIAGNOSIS

Recommendation

Resample at the next service interval to monitor.

Wear

All component wear rates are normal.

Contamination

There is no indication of any contamination in the oil.

Fluid Condition

The AN level is acceptable for this fluid. The condition of the oil is suitable for further service.

SAMPLE INFORMATION		method	limit/base	current	history1	history2
Sample Number	Client Info			WC0844023	WC0804428	WC0742574
Sample Date	Client Info			10 Nov 2023	16 May 2023	18 Nov 2022
Machine Age	hrs	Client Info		0	0	0
Oil Age	hrs	Client Info		0	0	0
Oil Changed	Client Info			N/A	N/A	N/A
Sample Status				NORMAL	ABNORMAL	ABNORMAL

CONTAMINATION		method	limit/base	current	history1	history2
Water	WC Method		>0.2	NEG	NEG	NEG

WEAR METALS		method	limit/base	current	history1	history2
Iron	ppm	ASTM D5185m	>200	2	2	3
Chromium	ppm	ASTM D5185m	>15	0	0	0
Nickel	ppm	ASTM D5185m	>15	0	0	0
Titanium	ppm	ASTM D5185m		0	0	0
Silver	ppm	ASTM D5185m		0	0	0
Aluminum	ppm	ASTM D5185m	>25	2	3	5
Lead	ppm	ASTM D5185m	>100	0	42	40
Copper	ppm	ASTM D5185m	>200	<1	3	3
Tin	ppm	ASTM D5185m	>25	0	0	<1
Antimony	ppm	ASTM D5185m	>5	---	---	---
Vanadium	ppm	ASTM D5185m		0	0	0
Cadmium	ppm	ASTM D5185m		0	0	0

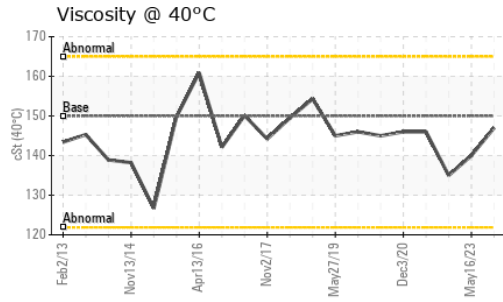
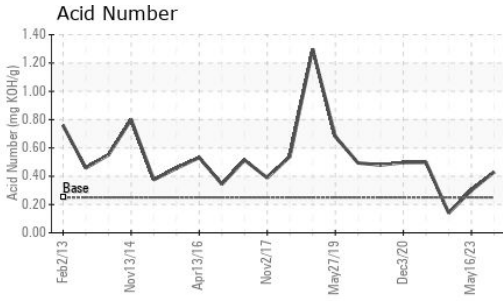
ADDITIVES		method	limit/base	current	history1	history2
Boron	ppm	ASTM D5185m		0	2	4
Barium	ppm	ASTM D5185m		0	0	0
Molybdenum	ppm	ASTM D5185m		0	2	3
Manganese	ppm	ASTM D5185m		0	<1	<1
Magnesium	ppm	ASTM D5185m	90	51	6	7
Calcium	ppm	ASTM D5185m		1	150	204
Phosphorus	ppm	ASTM D5185m		7	16	19
Zinc	ppm	ASTM D5185m		0	70	64
Sulfur	ppm	ASTM D5185m		20215	19584	18507

CONTAMINANTS		method	limit/base	current	history1	history2
Silicon	ppm	ASTM D5185m	>50	<1	2	3
Sodium	ppm	ASTM D5185m		<1	45	74
Potassium	ppm	ASTM D5185m	>20	<1	0	0

FLUID DEGRADATION		method	limit/base	current	history1	history2
Acid Number (AN)	mg KOH/g	ASTM D8045	0.25	0.43	0.3	0.14



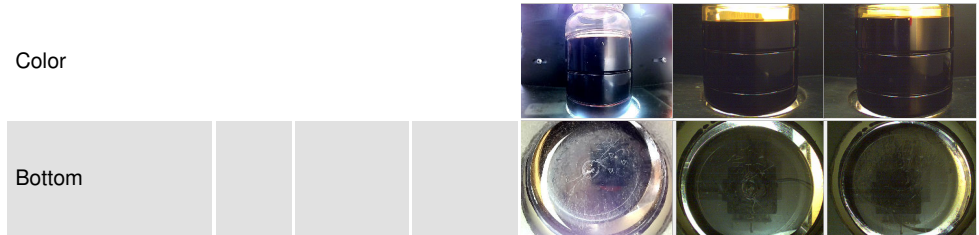
OIL ANALYSIS REPORT



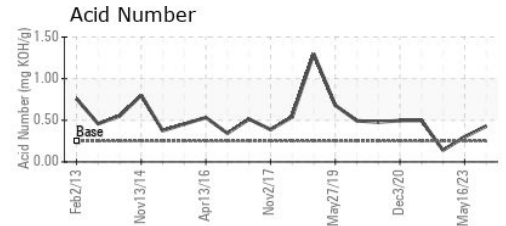
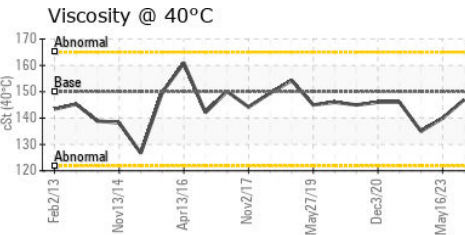
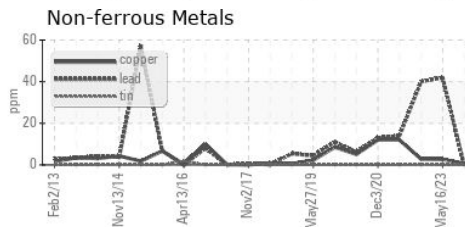
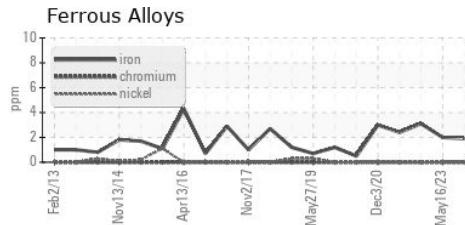
VISUAL	method	limit/base	current	history1	history2
White Metal	scalar	*Visual	NONE	NONE	NONE
Yellow Metal	scalar	*Visual	NONE	NONE	NONE
Precipitate	scalar	*Visual	NONE	NONE	NONE
Silt	scalar	*Visual	NONE	NONE	NONE
Debris	scalar	*Visual	NONE	▲ MODER	▲ MODER
Sand/Dirt	scalar	*Visual	NONE	NONE	NONE
Appearance	scalar	*Visual	NORML	NORML	NORML
Odor	scalar	*Visual	NORML	NORML	NORML
Emulsified Water	scalar	*Visual	>0.2	NEG	NEG
Free Water	scalar	*Visual		NEG	NEG

FLUID PROPERTIES	method	limit/base	current	history1	history2	
Visc @ 40°C	cSt	ASTM D445	150	147	140	135

SAMPLE IMAGES	method	limit/base	current	history1	history2
---------------	--------	------------	---------	----------	----------



GRAPHS



Certificate L2367

Laboratory : WearCheck USA - 501 Madison Ave., Cary, NC 27513
 Sample No. : WC0844023 Recieved : 17 Jan 2024
 Lab Number : 06063730 Diagnosed : 19 Jan 2024
 Unique Number : 10835112 Diagnostician : Doug Bogart
 Test Package : IND 2

SI GROUP INC - ALBEMARLE
 725 CANNON BRIDGE RD
 ORANGEBURG, SC
 US 29115

Contact: ERIC PROVEAUX
 eric.proveaux@contractors.sigroup.com
 T: (803)539-5228
 F: (803)539-5426

To discuss this sample report, contact Customer Service at 1-800-237-1369.

* - Denotes test methods that are outside of the ISO 17025 scope of accreditation.

Statements of conformity to specifications are based on the simple acceptance decision rule (JCGM 106:2012)