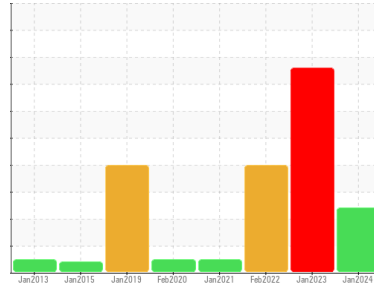




OIL ANALYSIS REPORT

Sample Rating Trend



DIRT



Area
[603803468 SDR]
 Machine Id
L-3 CMB MET PMP (S/N 20048491)
 Component
Gearbox
 Fluid
ISO 320 (--- GAL)

DIAGNOSIS

Recommendation

The oil change at the time of sampling has been noted. No corrective action is recommended at this time. Resample at the next service interval to monitor.

Wear

The iron level has decreased, but is still abnormal. Gear wear is indicated.

Contamination

Elemental level of silicon (Si) above normal.

Fluid Condition

The AN level is acceptable for this fluid.

SAMPLE INFORMATION

method	limit/base	current	history1	history2
Sample Number	Client Info	WC0854107	WC0562086	WC0605400
Sample Date	Client Info	13 Jan 2024	21 Jan 2023	05 Feb 2022
Machine Age	mls	Client Info	0	0
Oil Age	mls	Client Info	0	0
Oil Changed	Client Info	Changed	Changed	Changed
Sample Status		ABNORMAL	SEVERE	ABNORMAL

CONTAMINATION

method	limit/base	current	history1	history2
Water	WC Method >0.2	NEG	NEG	NEG

WEAR METALS

method	limit/base	current	history1	history2
Iron	ppm ASTM D5185m >200	▲ 291	823	▲ 379
Chromium	ppm ASTM D5185m >15	3	2	4
Nickel	ppm ASTM D5185m >15	<1	1	<1
Titanium	ppm ASTM D5185m	4	2	<1
Silver	ppm ASTM D5185m	0	0	<1
Aluminum	ppm ASTM D5185m >25	3	4	3
Lead	ppm ASTM D5185m >100	1	3	<1
Copper	ppm ASTM D5185m >200	<1	6	<1
Tin	ppm ASTM D5185m >25	<1	<1	<1
Antimony	ppm ASTM D5185m >5	---	---	<1
Vanadium	ppm ASTM D5185m	0	0	0
Cadmium	ppm ASTM D5185m	0	<1	0

ADDITIVES

method	limit/base	current	history1	history2
Boron	ppm ASTM D5185m	16	34	1
Barium	ppm ASTM D5185m	0	1	<1
Molybdenum	ppm ASTM D5185m	0	<1	<1
Manganese	ppm ASTM D5185m	2	12	3
Magnesium	ppm ASTM D5185m	8	9	4
Calcium	ppm ASTM D5185m	1363	1727	▲ 415
Phosphorus	ppm ASTM D5185m	240	268	190
Zinc	ppm ASTM D5185m	305	396	▲ 116
Sulfur	ppm ASTM D5185m	1840	2097	▲ 1444

CONTAMINANTS

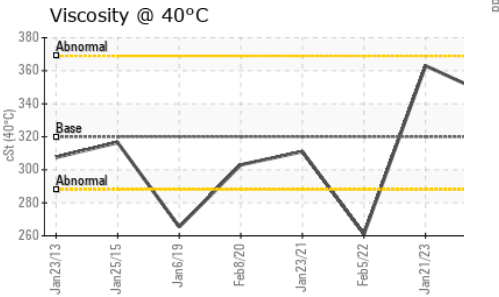
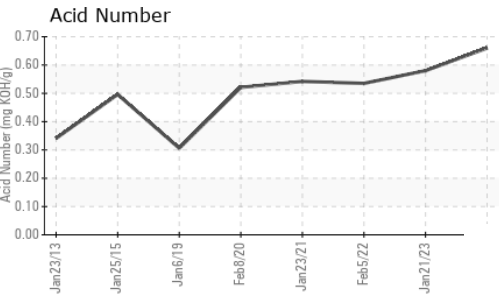
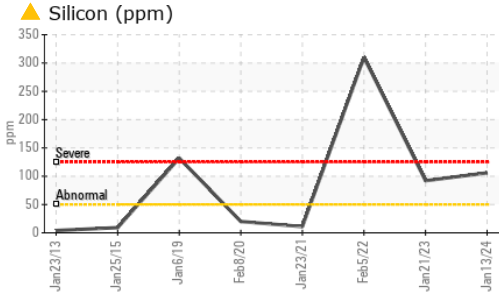
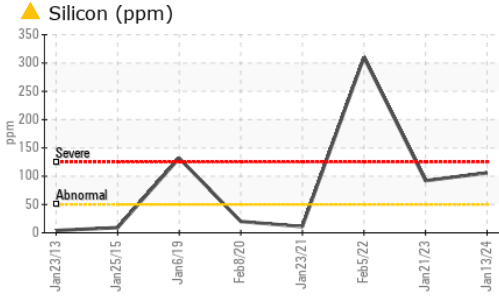
method	limit/base	current	history1	history2
Silicon	ppm ASTM D5185m >50	▲ 106	▲ 92	▲ 310
Sodium	ppm ASTM D5185m	4	3	15
Potassium	ppm ASTM D5185m >20	2	<1	<1

FLUID DEGRADATION

method	limit/base	current	history1	history2
Acid Number (AN)	mg KOH/g ASTM D8045	0.66	0.58	0.535



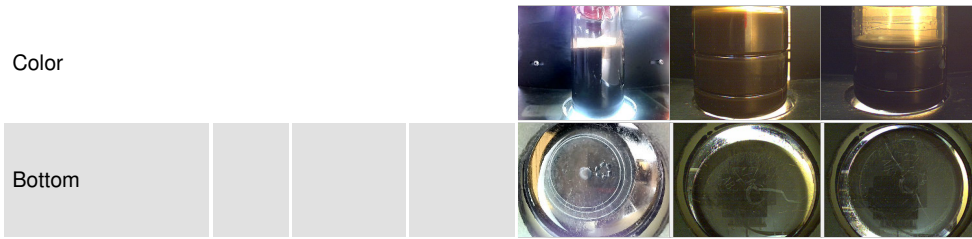
OIL ANALYSIS REPORT



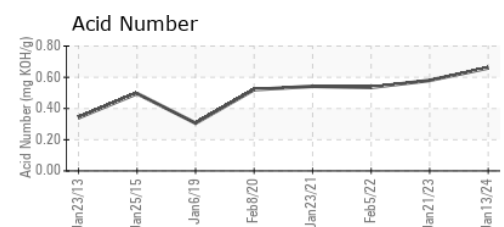
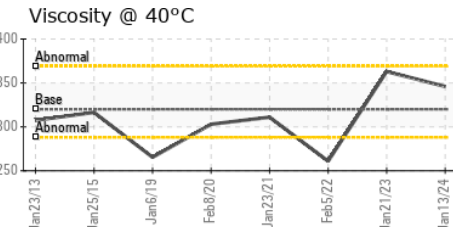
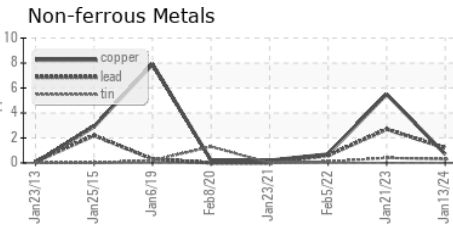
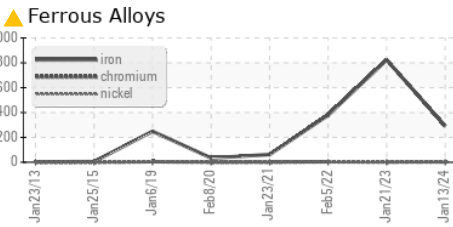
VISUAL	method	limit/base	current	history1	history2	
White Metal	scalar	*Visual	NONE	NONE	MODER	MODER
Yellow Metal	scalar	*Visual	NONE	NONE	NONE	NONE
Precipitate	scalar	*Visual	NONE	NONE	NONE	NONE
Silt	scalar	*Visual	NONE	LIGHT	NONE	NONE
Debris	scalar	*Visual	NONE	NONE	NONE	NONE
Sand/Dirt	scalar	*Visual	NONE	NONE	NONE	NONE
Appearance	scalar	*Visual	NORML	NORML	NORML	NORML
Odor	scalar	*Visual	NORML	NORML	NORML	NORML
Emulsified Water	scalar	*Visual	>0.2	NEG	NEG	NEG
Free Water	scalar	*Visual		NEG	NEG	NEG

FLUID PROPERTIES	method	limit/base	current	history1	history2
Visc @ 40°C	cSt	ASTM D445 320	346	363	▲ 261

SAMPLE IMAGES	method	limit/base	current	history1	history2
---------------	--------	------------	---------	----------	----------



GRAPHS



Certificate L2367

Laboratory : WearCheck USA - 501 Madison Ave., Cary, NC 27513
Sample No. : WC0854107 **Recieved** : 18 Jan 2024
Lab Number : 06064431 **Diagnosed** : 21 Jan 2024
Unique Number : 10835813 **Diagnostician** : Don Baldrige
Test Package : IND 2

To discuss this sample report, contact Customer Service at 1-800-237-1369.

* - Denotes test methods that are outside of the ISO 17025 scope of accreditation.

Statements of conformity to specifications are based on the simple acceptance decision rule (JCGM 106:2012)

MARS CHOCOLATE
 2019 NORTH OAK PARK
 CHICAGO, IL
 US 60707
 Contact: TONY FIORE
 tony.fiore@effem.com
 T: (773)745-2279
 F: