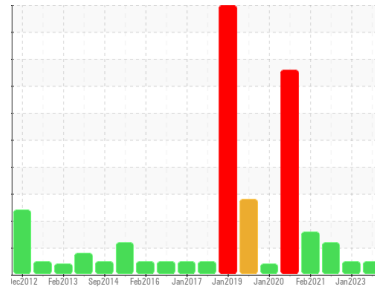




OIL ANALYSIS REPORT

Sample Rating Trend



NORMAL



Area
[603795751 SDR]
 Machine Id
L-3 CREAM ROOM MILK PUMP (S/N 20048455)
 Component
Gearbox
 Fluid
GEAR OIL ISO 320 (--- GAL)

DIAGNOSIS

Recommendation

Resample at the next service interval to monitor.

Wear

All component wear rates are normal.

Contamination

There is no indication of any contamination in the oil.

Fluid Condition

The AN level is acceptable for this fluid. The condition of the oil is suitable for further service.

SAMPLE INFORMATION

method	limit/base	current	history1	history2
Sample Number	Client Info	WC0854233	WC0605187	WC0605604
Sample Date	Client Info	30 Dec 2023	15 Jan 2023	05 Feb 2022
Machine Age	mls	Client Info	0	0
Oil Age	mls	Client Info	0	0
Oil Changed	Client Info	Changed	Changed	Changed
Sample Status		NORMAL	NORMAL	ATTENTION

CONTAMINATION

method	limit/base	current	history1	history2
Water	WC Method >0.2	NEG	NEG	NEG

WEAR METALS

method	limit/base	current	history1	history2	
Iron	ppm	ASTM D5185m >200	12	2	61
Chromium	ppm	ASTM D5185m >15	0	0	<1
Nickel	ppm	ASTM D5185m >15	0	0	0
Titanium	ppm	ASTM D5185m	0	0	<1
Silver	ppm	ASTM D5185m	0	0	<1
Aluminum	ppm	ASTM D5185m >25	<1	0	9
Lead	ppm	ASTM D5185m >100	<1	<1	<1
Copper	ppm	ASTM D5185m >200	<1	<1	1
Tin	ppm	ASTM D5185m >25	0	<1	0
Antimony	ppm	ASTM D5185m >5	---	---	16
Vanadium	ppm	ASTM D5185m	0	0	0
Cadmium	ppm	ASTM D5185m	0	0	0

ADDITIVES

method	limit/base	current	history1	history2	
Boron	ppm	ASTM D5185m 50	0	0	5
Barium	ppm	ASTM D5185m 15	0	0	0
Molybdenum	ppm	ASTM D5185m 15	0	0	<1
Manganese	ppm	ASTM D5185m	0	0	<1
Magnesium	ppm	ASTM D5185m 50	1	0	2
Calcium	ppm	ASTM D5185m 50	247	1	▲ 318
Phosphorus	ppm	ASTM D5185m 350	180	237	138
Zinc	ppm	ASTM D5185m 100	47	4	▲ 445
Sulfur	ppm	ASTM D5185m 12500	1901	2201	497

CONTAMINANTS

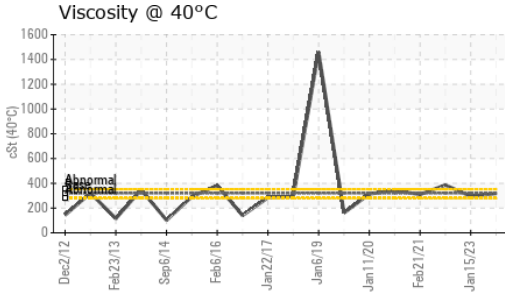
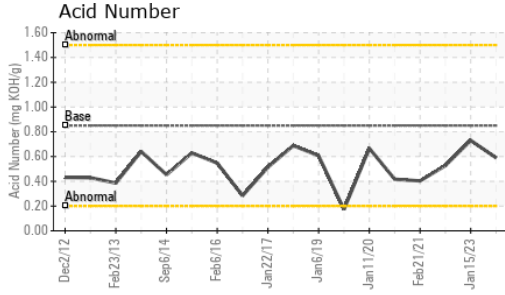
method	limit/base	current	history1	history2	
Silicon	ppm	ASTM D5185m >50	5	5	9
Sodium	ppm	ASTM D5185m	2	<1	31
Potassium	ppm	ASTM D5185m >20	3	<1	6

FLUID DEGRADATION

method	limit/base	current	history1	history2	
Acid Number (AN)	mg KOH/g	ASTM D8045 0.85	0.59	0.73	0.527



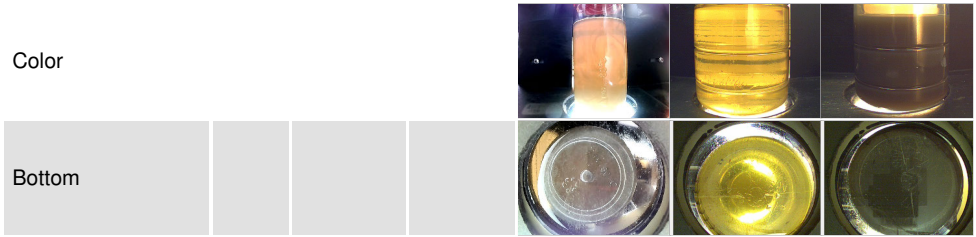
OIL ANALYSIS REPORT



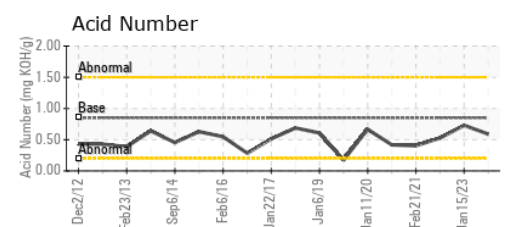
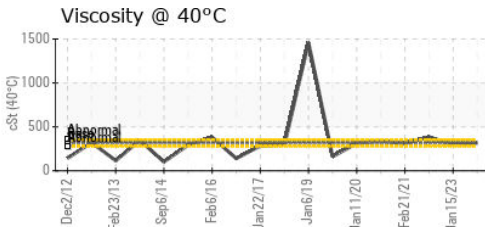
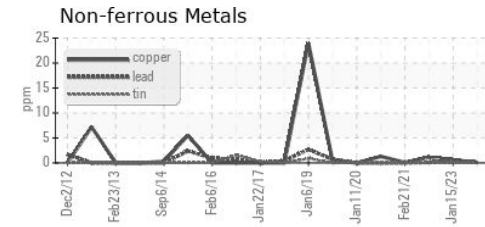
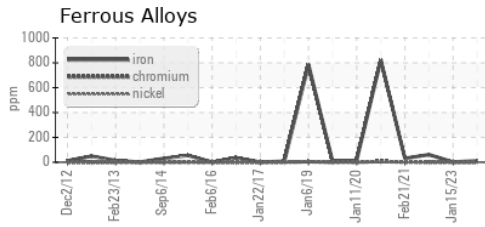
VISUAL	method	limit/base	current	history1	history2
White Metal	scalar	*Visual	NONE	NONE	MODER
Yellow Metal	scalar	*Visual	NONE	NONE	NONE
Precipitate	scalar	*Visual	NONE	NONE	NONE
Silt	scalar	*Visual	NONE	NONE	NONE
Debris	scalar	*Visual	NONE	NONE	LIGHT
Sand/Dirt	scalar	*Visual	NONE	NONE	NONE
Appearance	scalar	*Visual	NORML	NORML	NORML
Odor	scalar	*Visual	NORML	NORML	NORML
Emulsified Water	scalar	*Visual	>0.2	NEG	NEG
Free Water	scalar	*Visual		NEG	NEG

FLUID PROPERTIES	method	limit/base	current	history1	history2
Visc @ 40°C	cSt	ASTM D445 320	318	295	▲ 386

SAMPLE IMAGES	method	limit/base	current	history1	history2
---------------	--------	------------	---------	----------	----------



GRAPHS



Certificate L2367

Laboratory : WearCheck USA - 501 Madison Ave., Cary, NC 27513
 Sample No. : WC0854233
 Lab Number : 06064462
 Unique Number : 10835844
 Test Package : IND 2

MARS CHOCOLATE
 2019 NORTH OAK PARK
 CHICAGO, IL
 US 60707
 Contact: TONY FIORE
 tony.fiore@effem.com
 T: (773)745-2279
 F:

To discuss this sample report, contact Customer Service at 1-800-237-1369.

* - Denotes test methods that are outside of the ISO 17025 scope of accreditation.

Statements of conformity to specifications are based on the simple acceptance decision rule (JCGM 106:2012)