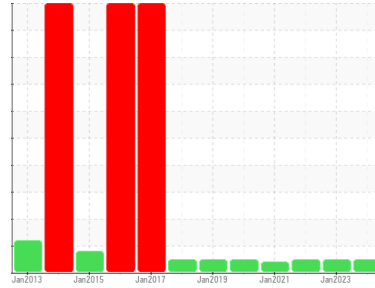




# OIL ANALYSIS REPORT

Sample Rating Trend



**NORMAL**



Area  
**[603795752 SDR]**  
 Machine Id  
**L-3 PREMIX PMP (S/N 20048533)**  
 Component  
**Gearbox**  
 Fluid  
**GEAR OIL ISO 320 (--- GAL)**

## DIAGNOSIS

### Recommendation

Resample at the next service interval to monitor.

### Wear

All component wear rates are normal.

### Contamination

There is no indication of any contamination in the oil.

### Fluid Condition

Additive levels indicate the addition of a different brand, or type of oil. The AN level is acceptable for this fluid.

## SAMPLE INFORMATION

	method	limit/base	current	history1	history2
Sample Number	Client Info		<b>WC0854232</b>	WC0605188	WC0605606
Sample Date	Client Info		<b>30 Dec 2023</b>	15 Jan 2023	05 Feb 2022
Machine Age	mls	Client Info	<b>0</b>	0	0
Oil Age	mls	Client Info	<b>0</b>	0	0
Oil Changed	Client Info		<b>Changed</b>	Changed	Changed
Sample Status			<b>NORMAL</b>	NORMAL	NORMAL

## CONTAMINATION

	method	limit/base	current	history1	history2
Water	WC Method	>0.2	<b>NEG</b>	NEG	NEG

## WEAR METALS

	method	limit/base	current	history1	history2
Iron	ppm	ASTM D5185m >200	<b>30</b>	2	25
Chromium	ppm	ASTM D5185m >15	<b>&lt;1</b>	0	0
Nickel	ppm	ASTM D5185m >15	<b>0</b>	0	0
Titanium	ppm	ASTM D5185m	<b>&lt;1</b>	0	0
Silver	ppm	ASTM D5185m	<b>0</b>	0	0
Aluminum	ppm	ASTM D5185m >25	<b>&lt;1</b>	0	<1
Lead	ppm	ASTM D5185m >100	<b>&lt;1</b>	0	0
Copper	ppm	ASTM D5185m >200	<b>&lt;1</b>	<1	<1
Tin	ppm	ASTM D5185m >25	<b>0</b>	0	0
Antimony	ppm	ASTM D5185m >5	<b>---</b>	---	2
Vanadium	ppm	ASTM D5185m	<b>0</b>	0	0
Cadmium	ppm	ASTM D5185m	<b>0</b>	0	0

## ADDITIVES

	method	limit/base	current	history1	history2
Boron	ppm	ASTM D5185m 50	<b>0</b>	0	1
Barium	ppm	ASTM D5185m 15	<b>0</b>	0	0
Molybdenum	ppm	ASTM D5185m 15	<b>0</b>	0	0
Manganese	ppm	ASTM D5185m	<b>0</b>	0	<1
Magnesium	ppm	ASTM D5185m 50	<b>5</b>	<1	0
Calcium	ppm	ASTM D5185m 50	<b>662</b>	2	8
Phosphorus	ppm	ASTM D5185m 350	<b>208</b>	237	368
Zinc	ppm	ASTM D5185m 100	<b>121</b>	5	26
Sulfur	ppm	ASTM D5185m 12500	<b>1912</b>	2173	848

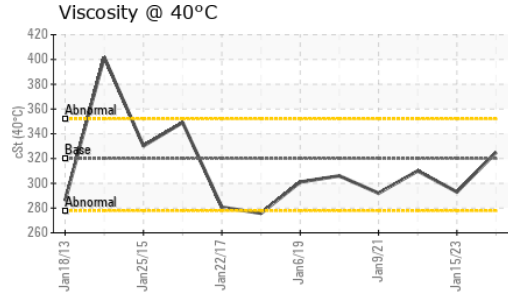
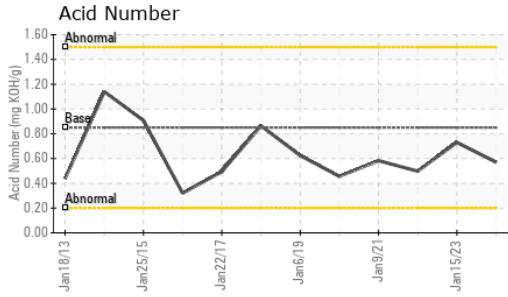
## CONTAMINANTS

	method	limit/base	current	history1	history2
Silicon	ppm	ASTM D5185m >50	<b>8</b>	5	11
Sodium	ppm	ASTM D5185m	<b>5</b>	<1	2
Potassium	ppm	ASTM D5185m >20	<b>3</b>	0	<1

## FLUID DEGRADATION

	method	limit/base	current	history1	history2
Acid Number (AN)	mg KOH/g	ASTM D8045 0.85	<b>0.57</b>	0.73	0.498

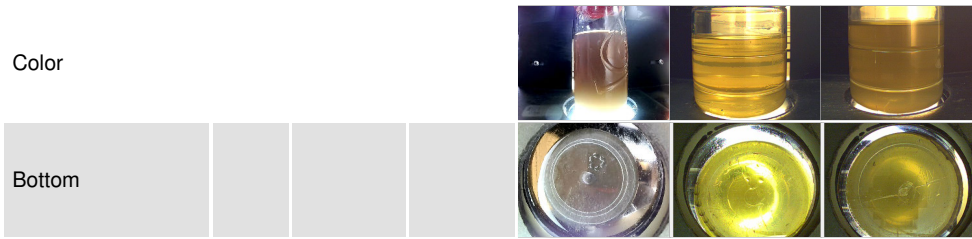
# OIL ANALYSIS REPORT



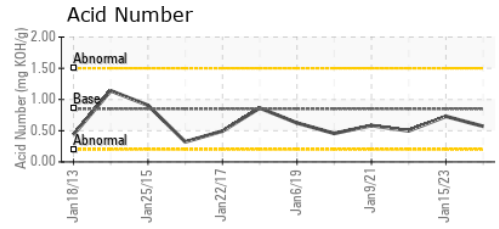
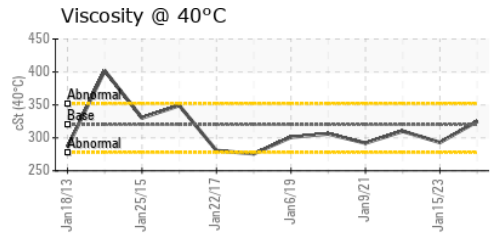
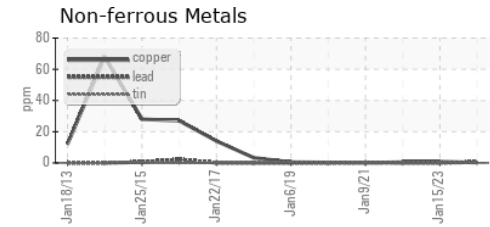
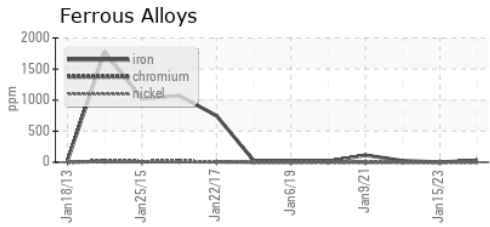
VISUAL	method	limit/base	current	history1	history2
White Metal	scalar	*Visual	NONE	NONE	NONE
Yellow Metal	scalar	*Visual	NONE	NONE	NONE
Precipitate	scalar	*Visual	NONE	NONE	NONE
Silt	scalar	*Visual	NONE	NONE	NONE
Debris	scalar	*Visual	NONE	NONE	NONE
Sand/Dirt	scalar	*Visual	NONE	NONE	NONE
Appearance	scalar	*Visual	NORML	NORML	NORML
Odor	scalar	*Visual	NORML	NORML	NORML
Emulsified Water	scalar	*Visual	>0.2	NEG	NEG
Free Water	scalar	*Visual		NEG	NEG

FLUID PROPERTIES	method	limit/base	current	history1	history2
Visc @ 40°C	cSt	ASTM D445 320	<b>325</b>	293	310

SAMPLE IMAGES	method	limit/base	current	history1	history2
---------------	--------	------------	---------	----------	----------



## GRAPHS



Certificate L2367

**Laboratory** : WearCheck USA - 501 Madison Ave., Cary, NC 27513  
**Sample No.** : WC0854232 **Recieved** : 18 Jan 2024  
**Lab Number** : **06064463** **Diagnosed** : 21 Jan 2024  
**Unique Number** : 10835845 **Diagnostician** : Don Baldrige  
**Test Package** : IND 2

**MARS CHOCOLATE**  
 2019 NORTH OAK PARK  
 CHICAGO, IL  
 US 60707  
 Contact: TONY FIORE  
 tony.fiore@effem.com  
 T: (773)745-2279  
 F:

To discuss this sample report, contact Customer Service at 1-800-237-1369.

\* - Denotes test methods that are outside of the ISO 17025 scope of accreditation.

Statements of conformity to specifications are based on the simple acceptance decision rule (JCGM 106:2012)