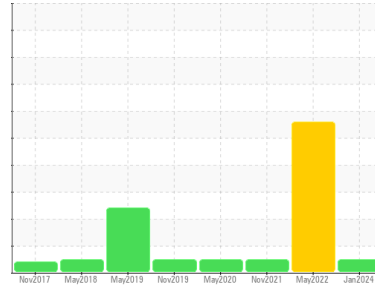




# OIL ANALYSIS REPORT

Sample Rating Trend



**NORMAL**



Area  
**CP11**  
Machine Id  
**DL51MT21**  
Component  
**Gearbox**  
Fluid  
**NOT GIVEN (--- GAL)**

## DIAGNOSIS

### Recommendation

Resample at the next service interval to monitor. NOTE: Please provide information regarding reservoir capacity, filter type and micron rating with next sample. Please specify the brand, type, and viscosity of the oil on your next sample.

### Wear

All component wear rates are normal.

### Contamination

There is no indication of any contamination in the oil.

### Fluid Condition

The AN level is acceptable for this fluid. The condition of the oil is suitable for further service.

SAMPLE INFORMATION		method	limit/base	current	history1	history2
Sample Number	Client Info			<b>WC0882104</b>	WC0694343	WC0635979
Sample Date	Client Info			<b>12 Jan 2024</b>	03 May 2022	02 Nov 2021
Machine Age	hrs	Client Info		<b>0</b>	0	0
Oil Age	hrs	Client Info		<b>0</b>	0	0
Oil Changed	Client Info			<b>N/A</b>	N/A	N/A
Sample Status				<b>NORMAL</b>	SEVERE	NORMAL

CONTAMINATION		method	limit/base	current	history1	history2
Water	WC Method		>0.2	<b>NEG</b>	NEG	NEG

WEAR METALS		method	limit/base	current	history1	history2
Iron	ppm	ASTM D5185m	>200	<b>20</b>	20	1
Chromium	ppm	ASTM D5185m	>15	<b>0</b>	0	0
Nickel	ppm	ASTM D5185m	>15	<b>0</b>	0	0
Titanium	ppm	ASTM D5185m		<b>0</b>	0	0
Silver	ppm	ASTM D5185m		<b>0</b>	<1	0
Aluminum	ppm	ASTM D5185m	>25	<b>7</b>	<1	0
Lead	ppm	ASTM D5185m	>100	<b>&lt;1</b>	<1	0
Copper	ppm	ASTM D5185m	>200	<b>&lt;1</b>	<1	0
Tin	ppm	ASTM D5185m	>25	<b>0</b>	0	0
Antimony	ppm	ASTM D5185m	>5	<b>---</b>	---	0
Vanadium	ppm	ASTM D5185m		<b>0</b>	0	0
Cadmium	ppm	ASTM D5185m		<b>0</b>	0	0

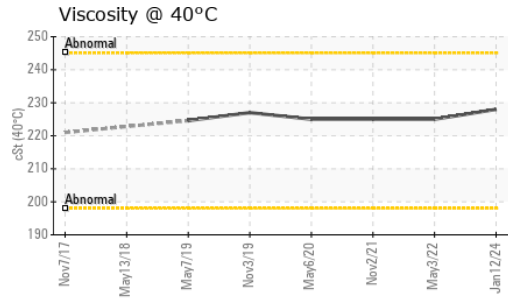
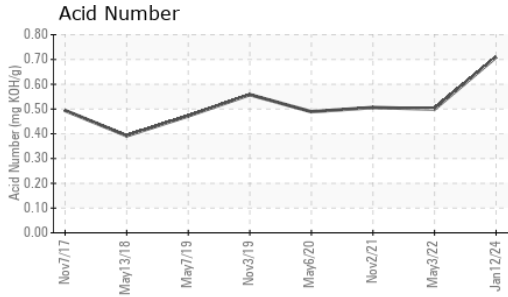
ADDITIVES		method	limit/base	current	history1	history2
Boron	ppm	ASTM D5185m		<b>0</b>	0	<1
Barium	ppm	ASTM D5185m		<b>0</b>	0	0
Molybdenum	ppm	ASTM D5185m		<b>0</b>	0	0
Manganese	ppm	ASTM D5185m		<b>&lt;1</b>	0	0
Magnesium	ppm	ASTM D5185m		<b>4</b>	0	0
Calcium	ppm	ASTM D5185m		<b>5</b>	6	1
Phosphorus	ppm	ASTM D5185m		<b>307</b>	355	210
Zinc	ppm	ASTM D5185m		<b>0</b>	4	0
Sulfur	ppm	ASTM D5185m		<b>1714</b>	422	399

CONTAMINANTS		method	limit/base	current	history1	history2
Silicon	ppm	ASTM D5185m	>50	<b>22</b>	5	3
Sodium	ppm	ASTM D5185m		<b>&lt;1</b>	0	<1
Potassium	ppm	ASTM D5185m	>20	<b>4</b>	1	0

FLUID DEGRADATION		method	limit/base	current	history1	history2
Acid Number (AN)	mg KOH/g	ASTM D8045		<b>0.71</b>	0.50	0.506



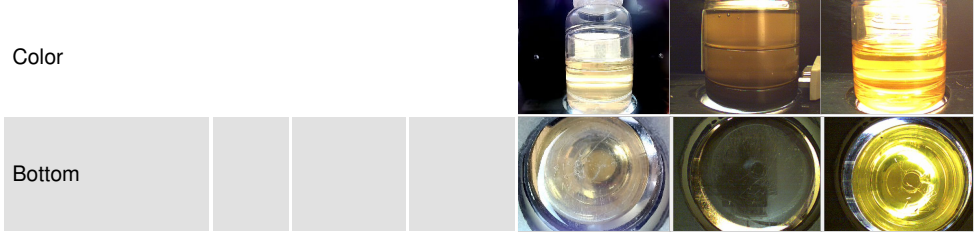
# OIL ANALYSIS REPORT



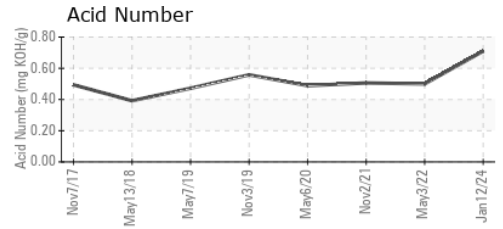
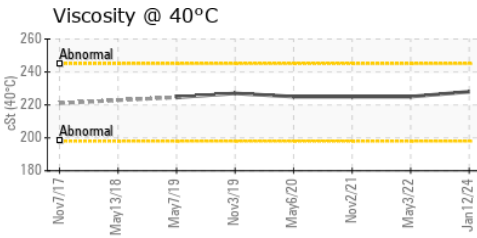
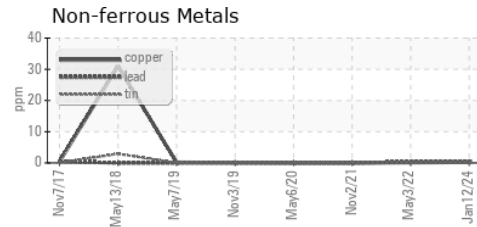
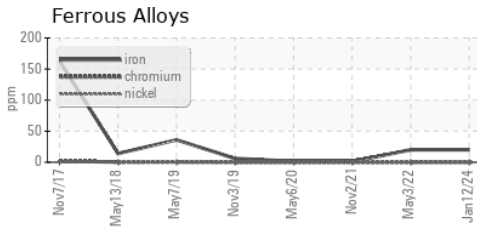
VISUAL	method	limit/base	current	history1	history2
White Metal	scalar	*Visual	NONE	NONE	NONE
Yellow Metal	scalar	*Visual	NONE	NONE	NONE
Precipitate	scalar	*Visual	NONE	NONE	NONE
Silt	scalar	*Visual	NONE	NONE	NONE
Debris	scalar	*Visual	NONE	LIGHT	VLITE
Sand/Dirt	scalar	*Visual	NONE	NONE	NONE
Appearance	scalar	*Visual	NORML	▲ SOLID	NORML
Odor	scalar	*Visual	NORML	NORML	NORML
Emulsified Water	scalar	*Visual	>0.2	NEG	NEG
Free Water	scalar	*Visual		NEG	NEG

FLUID PROPERTIES	method	limit/base	current	history1	history2
Visc @ 40°C	cSt	ASTM D445	228	225	225

SAMPLE IMAGES	method	limit/base	current	history1	history2
---------------	--------	------------	---------	----------	----------



## GRAPHS



Certificate L2367

**Laboratory** : WearCheck USA - 501 Madison Ave., Cary, NC 27513  
**Sample No.** : WC0882104 **Recieved** : 18 Jan 2024  
**Lab Number** : 06064472 **Diagnosed** : 19 Jan 2024  
**Unique Number** : 10835854 **Diagnostician** : Wes Davis  
**Test Package** : IND 2

**LEPRINO FOODS - ALLENDALE**  
 4700 RICH STREET  
 ALLENDALE, MI  
 US 49401  
 Contact: BILL FERRIER  
 BFERRIER@LEPRINOFOODS.COM  
 T:  
 F:

To discuss this sample report, contact Customer Service at 1-800-237-1369.

\* - Denotes test methods that are outside of the ISO 17025 scope of accreditation.

Statements of conformity to specifications are based on the simple acceptance decision rule (JCGM 106:2012)