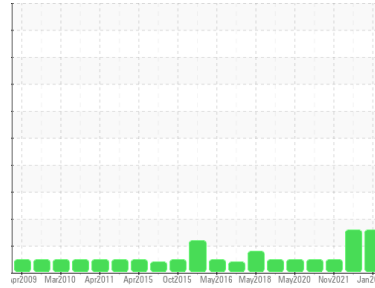




OIL ANALYSIS REPORT

Sample Rating Trend



VISCOSITY



Area
LFC-1030-CP-01-CP011
 Machine Id
AF51MT17-1030 - ADF DRIVE
 Component
Gearbox
 Fluid
LE 4220 (--- GAL)

DIAGNOSIS

▲ Recommendation

We advise an early resample to confirm this situation.

Wear

All component wear rates are normal.

Contamination

There is no indication of any contamination in the oil.

▲ Fluid Condition

The oil viscosity is lower than normal. This plus the additive levels indicates the addition of a different brand, or type of oil. Confirm oil type. The AN level is acceptable for this fluid.

SAMPLE INFORMATION

	method	limit/base	current	history1	history2
Sample Number	Client Info		WC0882110	WC0694316	WC0636008
Sample Date	Client Info		12 Jan 2024	03 May 2022	02 Nov 2021
Machine Age	hrs	Client Info	180	0	0
Oil Age	hrs	Client Info	180	0	0
Oil Changed	Client Info		N/A	N/A	N/A
Sample Status			ATTENTION	ABNORMAL	NORMAL

CONTAMINATION

	method	limit/base	current	history1	history2
Water	WC Method	>0.2	NEG	NEG	NEG

WEAR METALS

	method	limit/base	current	history1	history2	
Iron	ppm	ASTM D5185m	>200	2	10	7
Chromium	ppm	ASTM D5185m	>15	0	0	<1
Nickel	ppm	ASTM D5185m	>15	0	0	<1
Titanium	ppm	ASTM D5185m		0	0	0
Silver	ppm	ASTM D5185m		0	<1	<1
Aluminum	ppm	ASTM D5185m	>25	0	<1	<1
Lead	ppm	ASTM D5185m	>100	0	<1	<1
Copper	ppm	ASTM D5185m	>200	11	18	13
Tin	ppm	ASTM D5185m	>25	<1	2	2
Antimony	ppm	ASTM D5185m	>5	---	---	<1
Vanadium	ppm	ASTM D5185m		0	0	0
Cadmium	ppm	ASTM D5185m		0	0	0

ADDITIVES

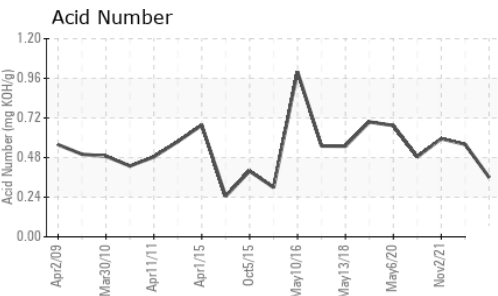
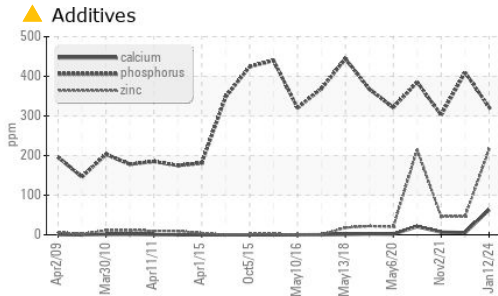
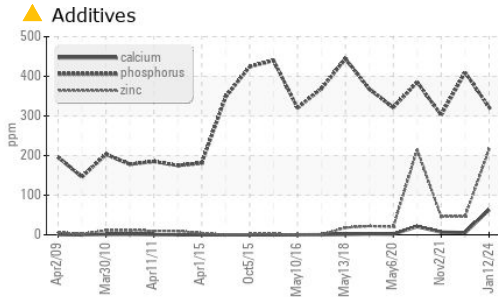
	method	limit/base	current	history1	history2	
Boron	ppm	ASTM D5185m		0	0	3
Barium	ppm	ASTM D5185m		0	0	0
Molybdenum	ppm	ASTM D5185m		0	0	<1
Manganese	ppm	ASTM D5185m		0	<1	<1
Magnesium	ppm	ASTM D5185m		0	0	1
Calcium	ppm	ASTM D5185m		▲ 63	6	7
Phosphorus	ppm	ASTM D5185m		322	410	302
Zinc	ppm	ASTM D5185m		▲ 215	46	46
Sulfur	ppm	ASTM D5185m		▲ 941	1615	1932

CONTAMINANTS

	method	limit/base	current	history1	history2	
Silicon	ppm	ASTM D5185m	>50	3	3	2
Sodium	ppm	ASTM D5185m		0	0	0
Potassium	ppm	ASTM D5185m	>20	<1	<1	1

FLUID DEGRADATION

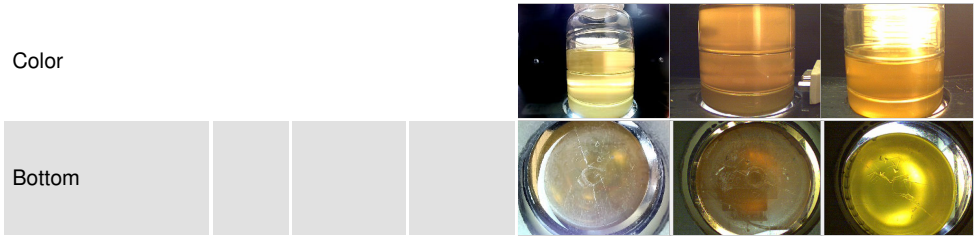
	method	limit/base	current	history1	history2	
Acid Number (AN)	mg KOH/g	ASTM D8045		0.36	0.56	0.594



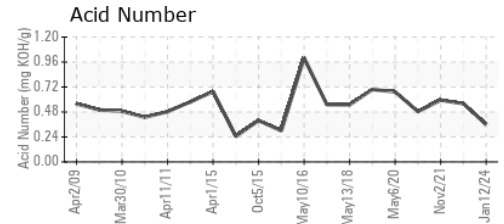
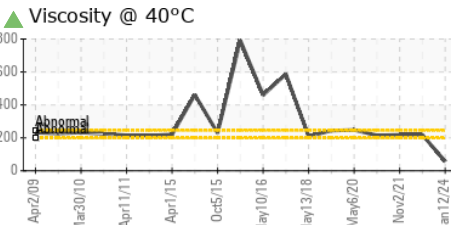
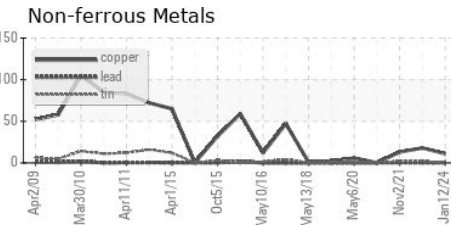
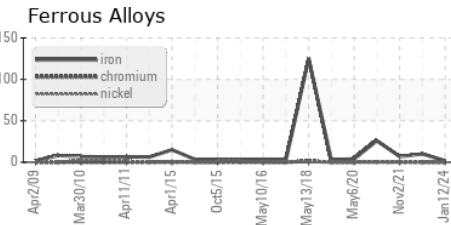
VISUAL	method	limit/base	current	history1	history2
White Metal	scalar	*Visual	NONE	NONE	LIGHT
Yellow Metal	scalar	*Visual	NONE	NONE	NONE
Precipitate	scalar	*Visual	NONE	NONE	NONE
Silt	scalar	*Visual	NONE	NONE	NONE
Debris	scalar	*Visual	NONE	LIGHT	NONE
Sand/Dirt	scalar	*Visual	NONE	NONE	NONE
Appearance	scalar	*Visual	NORML	SOLID	NORML
Odor	scalar	*Visual	NORML	NORML	NORML
Emulsified Water	scalar	*Visual	>0.2	NEG	NEG
Free Water	scalar	*Visual		NEG	NEG

FLUID PROPERTIES	method	limit/base	current	history1	history2
Visc @ 40°C	cSt	ASTM D445	▲ 57.1	218	218

SAMPLE IMAGES	method	limit/base	current	history1	history2
---------------	--------	------------	---------	----------	----------



GRAPHS



Certificate L2367

Laboratory : WearCheck USA - 501 Madison Ave., Cary, NC 27513
 Sample No. : WC0882110 Recieved : 18 Jan 2024
 Lab Number : 06064473 Diagnosed : 24 Jan 2024
 Unique Number : 10835855 Diagnostician : Doug Bogart
 Test Package : IND 2

LEPRINO FOODS - ALLENDALE
 4700 RICH STREET
 ALLENDALE, MI
 US 49401
 Contact: BILL FERRIER
 BFERRIER@LEPRINOFODS.COM

To discuss this sample report, contact Customer Service at 1-800-237-1369.

* - Denotes test methods that are outside of the ISO 17025 scope of accreditation.

Statements of conformity to specifications are based on the simple acceptance decision rule (JCGM 106:2012)

T:
F: