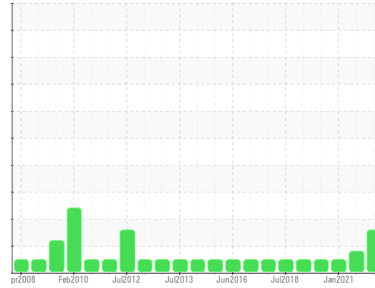




OIL ANALYSIS REPORT

Sample Rating Trend



DIRT



Area
LFC-1030-CM-01-CM023
 Machine Id
P201PP07-1030 - FLASH VESSEL DISCHARGE PUMP
 Component
Transmission
 Fluid
LE 4220 (--- GAL)

DIAGNOSIS

Recommendation

No corrective action is recommended at this time. Resample at the next service interval to monitor.

Wear

All component wear rates are normal.

Contamination

Elemental level of silicon (Si) above normal.

Fluid Condition

The AN level is acceptable for this fluid. The condition of the fluid is acceptable for the time in service.

SAMPLE INFORMATION

| | method | limit/base | current | history1 | history2 |
|---------------|-------------|-------------|--------------------|-------------|-------------|
| Sample Number | Client Info | | WC0882107 | WC0767401 | WC0532246 |
| Sample Date | Client Info | | 12 Jan 2024 | 09 Jan 2023 | 27 Jan 2021 |
| Machine Age | hrs | Client Info | 0 | 0 | 0 |
| Oil Age | hrs | Client Info | 0 | 0 | 0 |
| Oil Changed | Client Info | | N/A | N/A | N/A |
| Sample Status | | | ABNORMAL | ATTENTION | NORMAL |

CONTAMINATION

| | method | limit/base | current | history1 | history2 |
|-------|-----------|------------|------------|----------|----------|
| Water | WC Method | >0.1 | NEG | NEG | NEG |

WEAR METALS

| | method | limit/base | current | history1 | history2 | |
|----------|--------|-------------|---------|--------------|----------|----|
| Iron | ppm | ASTM D5185m | >200 | 136 | 80 | 2 |
| Chromium | ppm | ASTM D5185m | >10 | 1 | <1 | 0 |
| Nickel | ppm | ASTM D5185m | | 0 | <1 | 0 |
| Titanium | ppm | ASTM D5185m | | 0 | 0 | 0 |
| Silver | ppm | ASTM D5185m | | 0 | 0 | <1 |
| Aluminum | ppm | ASTM D5185m | >50 | <1 | <1 | 0 |
| Lead | ppm | ASTM D5185m | >50 | <1 | <1 | 0 |
| Copper | ppm | ASTM D5185m | >200 | <1 | 3 | <1 |
| Tin | ppm | ASTM D5185m | >10 | <1 | <1 | 0 |
| Antimony | ppm | ASTM D5185m | | --- | --- | 0 |
| Vanadium | ppm | ASTM D5185m | | 0 | 0 | 0 |
| Cadmium | ppm | ASTM D5185m | | 0 | 0 | 0 |

ADDITIVES

| | method | limit/base | current | history1 | history2 | |
|------------|--------|-------------|---------|--------------|----------|------|
| Boron | ppm | ASTM D5185m | | 0 | 0 | <1 |
| Barium | ppm | ASTM D5185m | | 0 | 0 | 0 |
| Molybdenum | ppm | ASTM D5185m | | 0 | <1 | 0 |
| Manganese | ppm | ASTM D5185m | | 1 | <1 | 0 |
| Magnesium | ppm | ASTM D5185m | | <1 | 0 | 0 |
| Calcium | ppm | ASTM D5185m | | 4 | <1 | 15 |
| Phosphorus | ppm | ASTM D5185m | | 401 | 423 | 342 |
| Zinc | ppm | ASTM D5185m | | 52 | 34 | 212 |
| Sulfur | ppm | ASTM D5185m | | 2340 | 2995 | 1417 |

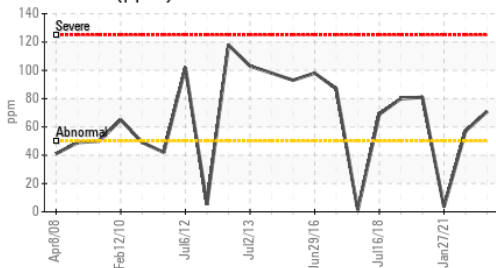
CONTAMINANTS

| | method | limit/base | current | history1 | history2 | |
|-----------|--------|-------------|---------|-------------|----------|----|
| Silicon | ppm | ASTM D5185m | >50 | ▲ 71 | 57 | 4 |
| Sodium | ppm | ASTM D5185m | | 6 | 1 | 0 |
| Potassium | ppm | ASTM D5185m | >20 | 3 | 2 | <1 |

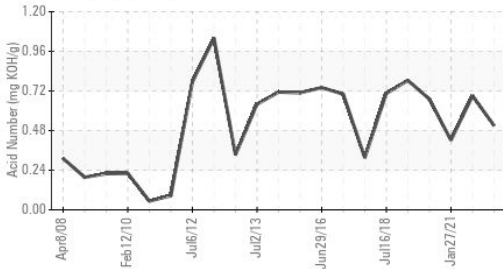
FLUID DEGRADATION

| | method | limit/base | current | history1 | history2 | |
|------------------|----------|------------|---------|-------------|----------|-------|
| Acid Number (AN) | mg KOH/g | ASTM D8045 | | 0.51 | 0.69 | 0.422 |

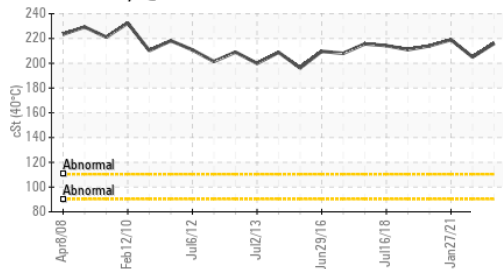
▲ Silicon (ppm)



Acid Number



Viscosity @ 40°C



| VISUAL | method | limit/base | current | history1 | history2 |
|------------------|--------|------------|---------|----------|----------|
| White Metal | scalar | *Visual | NONE | NONE | NONE |
| Yellow Metal | scalar | *Visual | NONE | NONE | NONE |
| Precipitate | scalar | *Visual | NONE | NONE | NONE |
| Silt | scalar | *Visual | NONE | NONE | NONE |
| Debris | scalar | *Visual | NONE | NONE | NONE |
| Sand/Dirt | scalar | *Visual | NONE | NONE | NONE |
| Appearance | scalar | *Visual | NORML | ▲ HAZY | NORML |
| Odor | scalar | *Visual | NORML | NORML | NORML |
| Emulsified Water | scalar | *Visual | >0.1 | NEG | NEG |
| Free Water | scalar | *Visual | | NEG | NEG |

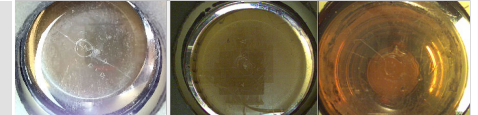
| FLUID PROPERTIES | method | limit/base | current | history1 | history2 |
|------------------|--------|------------|---------|----------|----------|
| Visc @ 40°C | cSt | ASTM D445 | 216 | 205 | 219 |

| SAMPLE IMAGES | method | limit/base | current | history1 | history2 |
|---------------|--------|------------|---------|----------|----------|
|---------------|--------|------------|---------|----------|----------|

Color

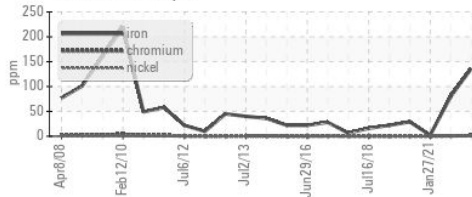


Bottom

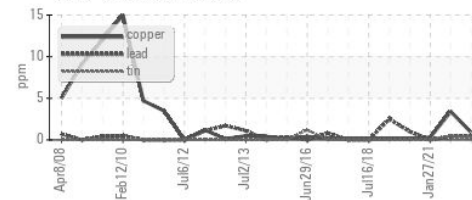


GRAPHS

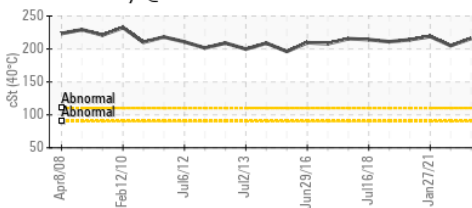
Ferrous Alloys



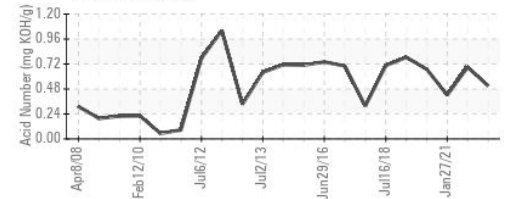
Non-ferrous Metals



Viscosity @ 40°C



Acid Number



Certificate L2367

Laboratory : WearCheck USA - 501 Madison Ave., Cary, NC 27513
 Sample No. : WC0882107 Recieved : 18 Jan 2024
 Lab Number : 06064480 Diagnosed : 21 Jan 2024
 Unique Number : 10835862 Diagnostician : Don Baldrige
 Test Package : IND 2

LEPRINO FOODS - ALLENDALE
 4700 RICH STREET
 ALLENDALE, MI
 US 49401

Contact: BILL FERRIER
 BFERRIER@LEPRINOFODS.COM

To discuss this sample report, contact Customer Service at 1-800-237-1369.

* - Denotes test methods that are outside of the ISO 17025 scope of accreditation.

Statements of conformity to specifications are based on the simple acceptance decision rule (JCGM 106:2012)

T:
F: